

- NOTES:**
- 1. Do not scale drawing.
 - 2. Blocking in wood frames must be securely fastened to header to support slide track assembly.
 - 3. Hollow-metal doors require channel or box-type reinforcement when through-bolt mount is specified.
 - 4. Minimum thickness recommended for reinforcements in hollow-metal doors and frames: .1046" [2.66mm] unless otherwise noted.
 - 5. Max. degree of opening: 140° (conditions permitting).
 - 6. Right hand door shown, Left hand opposite.
 - 7. Minimum ceiling clearance for slider track assembly: 1-1/2" [38.5 mm]
 - 8. All dimensions in inches [mm].

*Minimum Ceiling Height

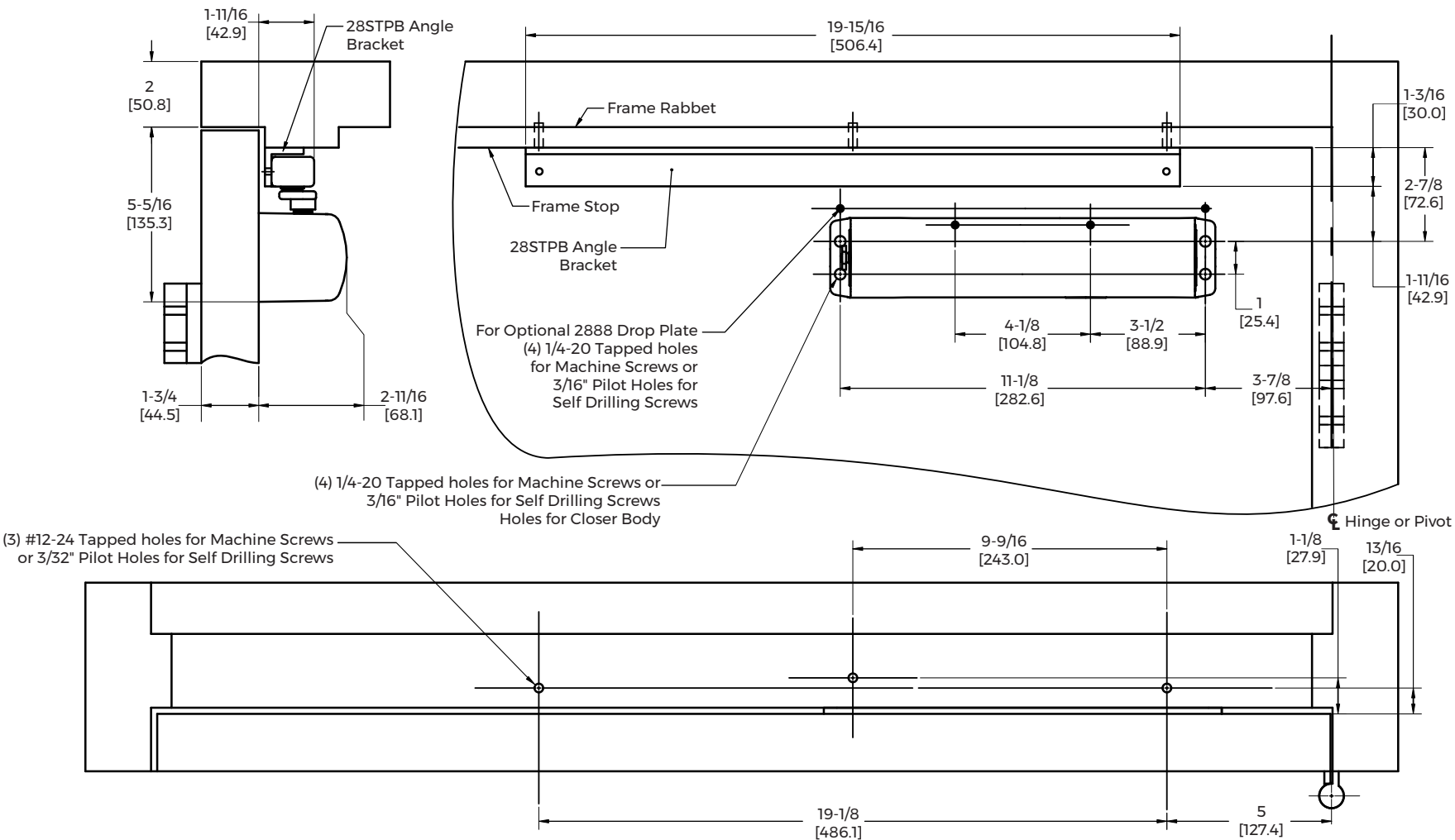


2800ST Cam Action Door Closer
Pull Side Application, Door Mounted

Approved 2023-10-10



TEMPLATE NUMBER	REV	DATE
7328-0013	1	10/23



NOTES:

- 1. Do not scale drawing.
- 2. Blocking in wood frames must be securely fastened to header to support angle bracket and slide track assembly.
- 3. Hollow-metal doors require channel or box-type reinforcement when through-bolt mount is specified.
- 4. Minimum thickness recommended for reinforcements in hollow-metal doors and frames: .1046" [2.66mm] unless otherwise noted.
- 5. Max. degree of opening: 110° (conditions permitting).
- 6. Right hand door shown, Left hand opposite.
- 7. All dimensions in inches [mm].



TRADEMARK
HARDWARE

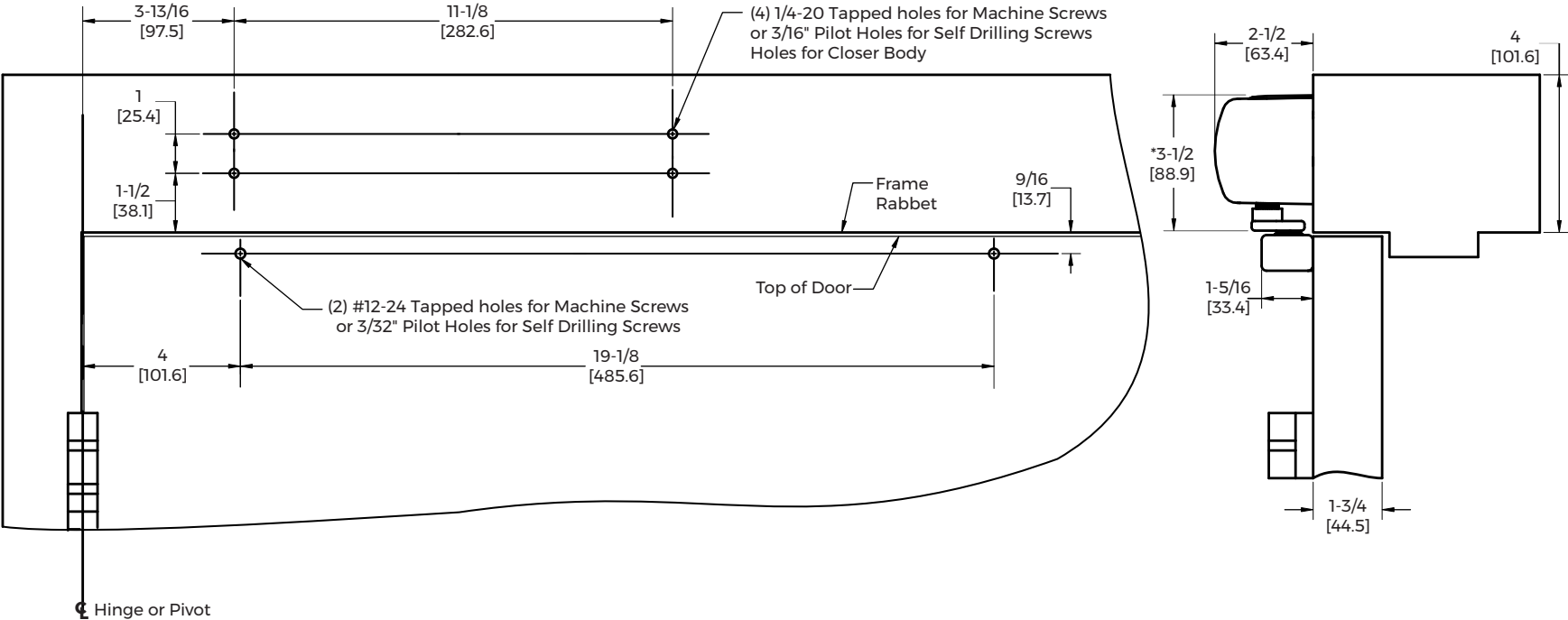
2800ST Cam Action Door Closer
Push Side Application, with 28STPB Angle Bracket
Door Mounted

Approved 2023-10-10



ASSA ABLOY

TEMPLATE NUMBER	REV	DATE
7328-0015	1	10/23



- NOTES:**
- 1. Do not scale drawing.
 - 2. Blocking in wood frames must be securely fastened to header to support closer body.
 - 3. Hollow-metal doors require channel or box-type reinforcement when through-bolt mount is specified.
 - 4. Minimum thickness recommended for reinforcements in hollow-metal doors and frames: .1046" [2.66mm] unless otherwise noted.
 - 5. Max. degree of opening: 140° [conditions permitting].
 - 6. Right hand door shown, Left hand opposite.
 - 7. Minimum ceiling clearance for closer cover: 3-1/2" [88.9 mm]
 - 8. To install the closer on a frame that is less than 3" [76.2mm], refer to template 80-7328-0014-020, available for download from NortonRixson.com.
 - 9. All dimensions in inches [mm].

*Minimum Ceiling Height

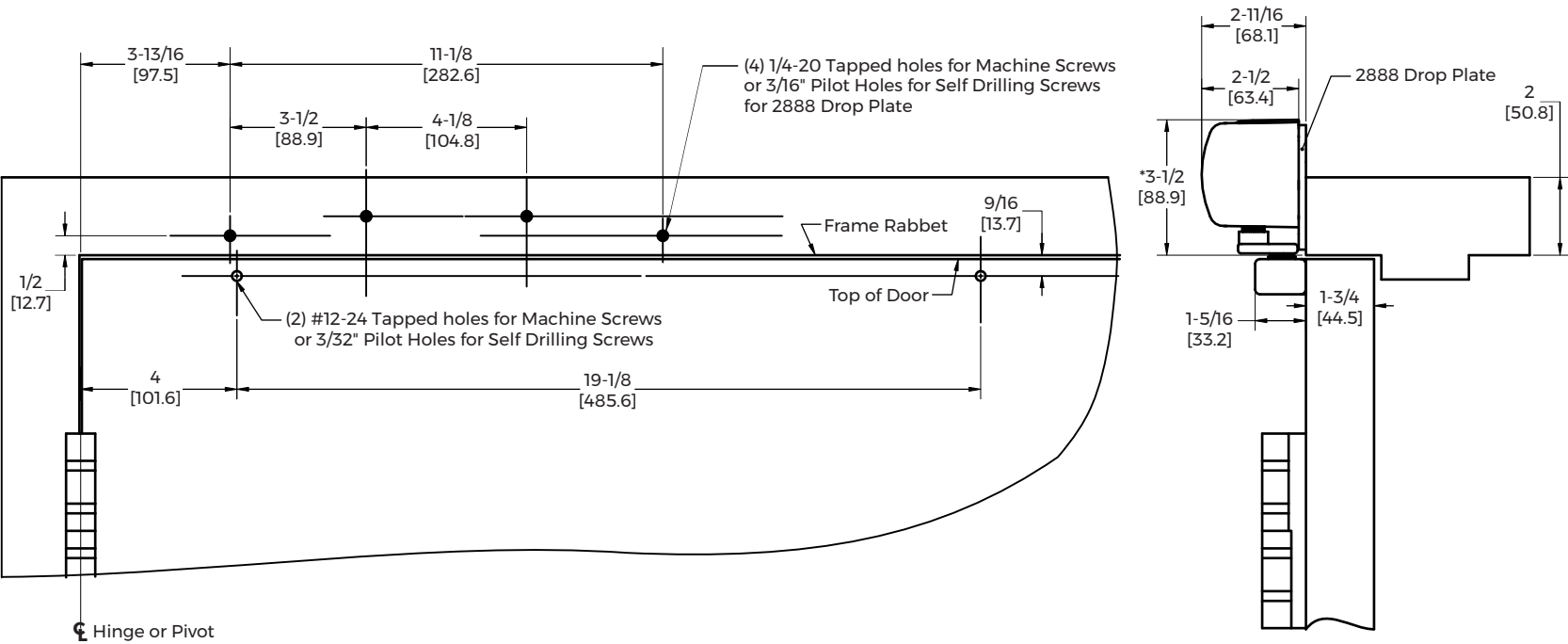


**2800ST Cam Action Door Closer,
Pull Side Application,
Frame Mounted; Frame Face 3" [76.2mm] or Greater**

Approved 2023-10-10



TEMPLATE NUMBER	REV	DATE
7328-0012	1	10/23



- NOTES:**
- 1. Do not scale drawing.
 - 2. Blocking in wood frames must be securely fastened to header to support closer body.
 - 3. Hollow-metal doors require channel or box-type reinforcement when through-bolt mount is specified.
 - 4. Minimum thickness recommended for reinforcements in hollow-metal doors and frames: .1046" [2.66mm] unless otherwise noted.
 - 5. Max. degree of opening: 140° [conditions permitting].
 - 6. Right hand door shown, Left hand opposite.
 - 7. Minimum ceiling clearance for closer cover: 3-1/2" [88.9 mm]
 - 8. To install the closer on a frame that is greater than 3" [76.2mm] without the 2888 Drop Plate, refer to template 80-7328-0012-020, available for download from NortonRixson.com.
 - 9. All dimensions in inches [mm].

*Minimum Ceiling Height

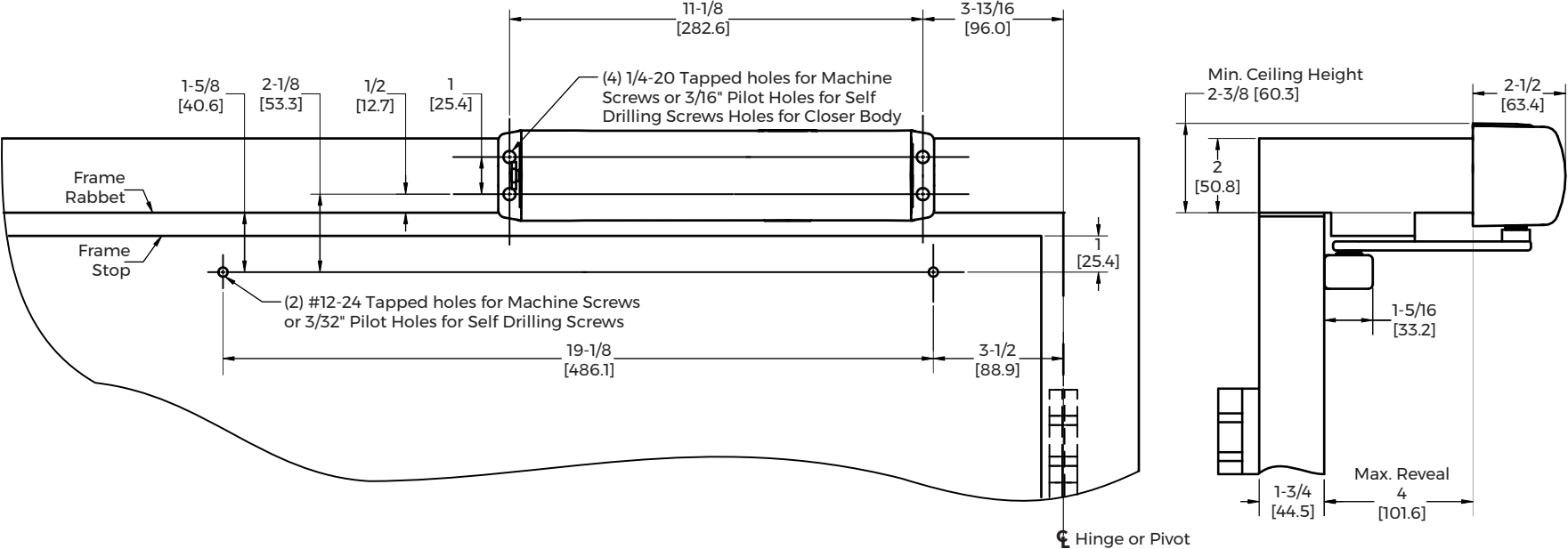


**2800ST Cam Action Door Closer,
Pull Side Application, with 2888 Backplate
Frame Mounted; Frame Face Less than 3" [76.2mm]**

Approved 2023-10-10



TEMPLATE NUMBER	REV	DATE
7328-0014	1	10/23



- NOTES:**
1. Do not scale drawing.
 2. Blocking in wood frames must be securely fastened to header to support closer body.
 3. Hollow-metal doors require channel or box-type reinforcement when through-bolt mount is specified.
 4. Minimum thickness recommended for reinforcements in hollow-metal doors and frames: .1046" [2.66mm] unless otherwise noted.
 5. Max. degree of opening: 110° (conditions permitting).
 6. Right hand door shown, Left hand opposite.
 7. Minimum ceiling clearance for closer cover: 2-3/8" [60.3 mm].
 8. Auxiliary stop required.
 9. All dimensions in inches [mm].



2800ST Cam Action Door Closer
Push Side Application
Frame Mounted

Approved 2023-10-10



TEMPLATE NUMBER	REV	DATE
7328-0016	1	10/23