

- NOTES:**
- Do not scale drawing.
  - Left hand door shown.
  - Hardware dimensions shown (not cutout).
  - Dimensions are in inches (see chart for metric conversion).
  - Minimum thickness recommended for reinforcements in hollow metal doors and frames: .1046" (2.66mm.) unless otherwise noted.
  - Minimum door width 29 inches.
  - Track is 24 inches long.
  - Maximum width hinge is 5 inches.

METRIC CONVERSION CHART	
Inches	mm.
1/8	3.2
1/4	6.4
3/8	9.5
5/8	15.9
1	25.4
1-3/16	30.2
1-1/4	31.8
1-3/4	44.5
2	50.8
2-1/4	57.2
3-3/4	95.3
5	127.0
8	203.2
14	355.6
15-3/4	400.0
16-7/16	417.5
21-1/2	546.1
24	609.6
29	736.6

FOR PRODUCTS  
PRODUCED AFTER  
9-1-01

7900H-B Series Door Closers  
For Use on Doors Hung on 4-1/2" or 5" Wide Butt Hinges  
Hold Open Installation



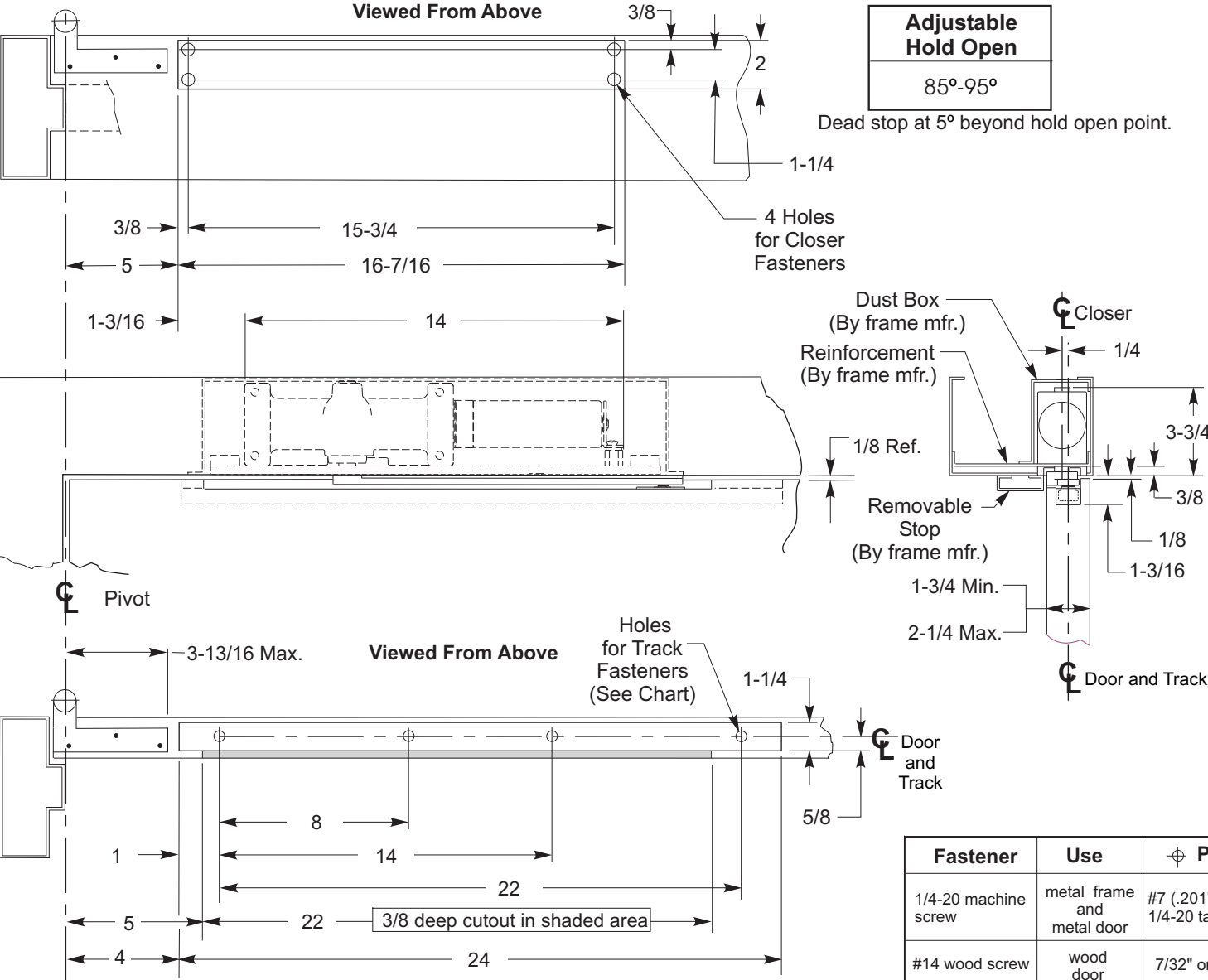
Norton

ASSA ABLOY

www.nortondoorcontrols.com

TEMPLATE NUMBER  
7379-0253

DATE  
01-09



- NOTES:**
- Do not scale drawing.
  - Left hand door shown.
  - Hardware dimensions shown (not cutout).
  - Dimensions are in inches (see chart for metric conversion).
  - Minimum thickness recommended for reinforcements in hollow metal doors and frames: .1046" (2.66mm.) unless otherwise noted.
  - Track is 24 inches long.
  - For doors less than 30 inches wide, contact factory for modification requirements.

METRIC CONVERSION CHART	
Inches	mm.
1/8	3.2
1/4	6.4
3/8	9.5
5/8	15.9
1	25.4
1-3/16	30.1
1-1/4	31.8
1-3/4	44.5
2	50.8
2-1/4	57.2
3-3/4	95.3
3-13/16	96.8
4	101.6
5	127.0
8	203.2
14	355.6
15-3/4	400.0
16-7/16	417.5
22	558.8
24	609.6
30	762.0

Fastener	Use	Preparation
1/4-20 machine screw	metal frame and metal door	#7 (.201" dia.) or 5.10mm. drill 1/4-20 tap
#14 wood screw	wood door	7/32" or 5.5 mm. drill

FOR PRODUCTS  
PRODUCED AFTER  
9-1-01

**7900H-OP Series Door Closers**  
**For Use on Doors Hung on 3/4" Offset Pivots**  
**Hold Open Installation**

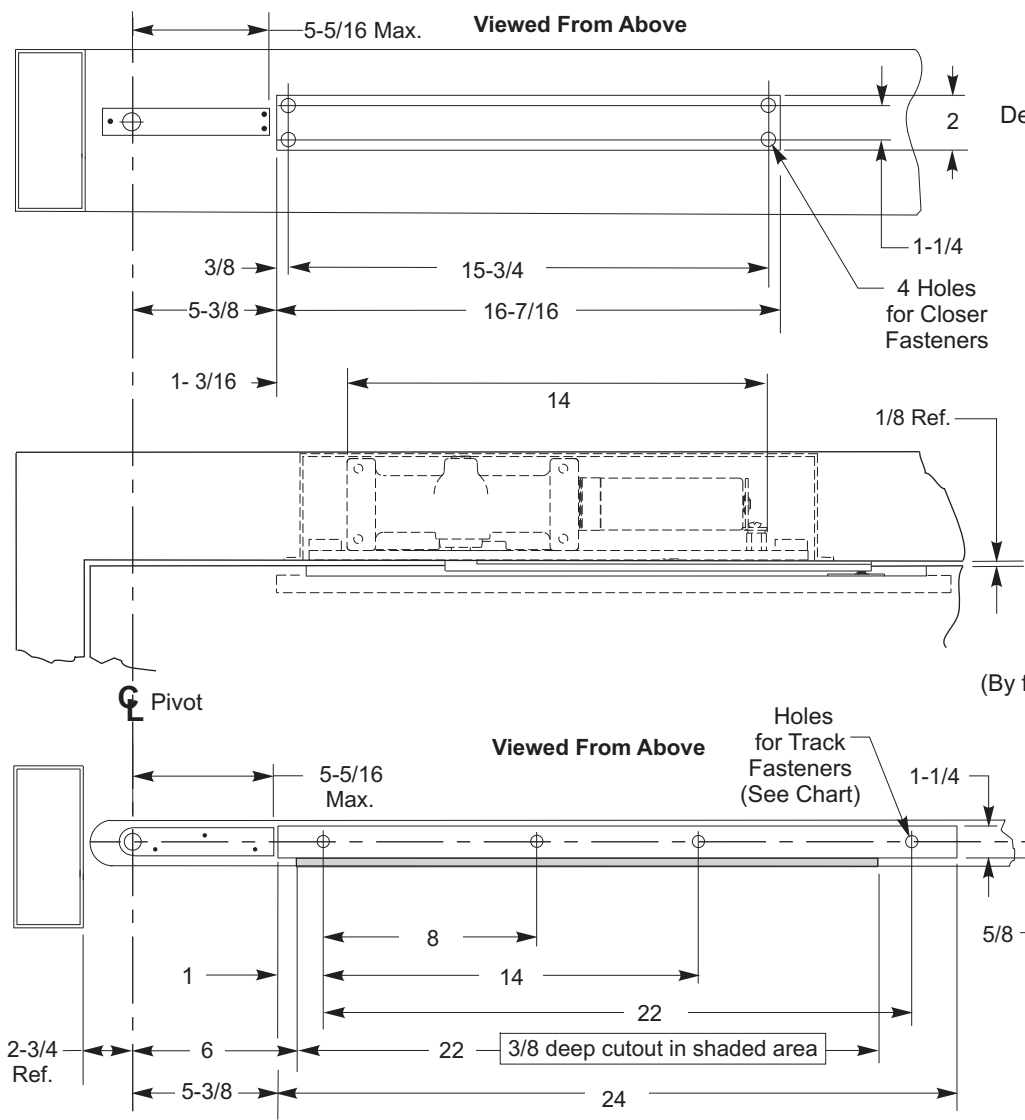


**Norton**

ASSA ABLOY

www.nortondoortcontrols.com

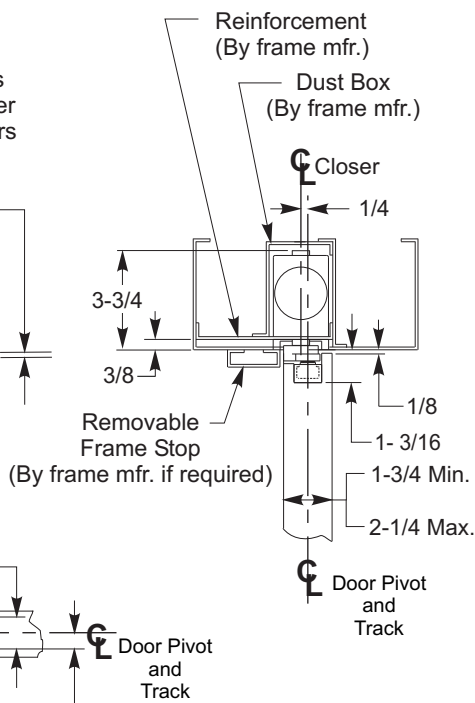
TEMPLATE NUMBER **7379-0256** DATE **01-09**



**Adjustable  
Hold Open**

85°-110°

Dead stop at 5° beyond hold open point.



- NOTES:**
- Do not scale drawing.
  - Left hand door shown.
  - Hardware dimensions shown (not cutout).
  - Dimensions are in inches (see chart for metric conversion).
  - Minimum thickness recommended for reinforcements in hollow metal doors and frames: .1046" (2.66mm.) unless otherwise noted.
  - Track is 24 inches long.
  - For doors less than 32 inches wide, contact factory for modification requirements.

METRIC CONVERSION CHART	
Inches	mm.
1/8	3.2
1/4	6.4
3/8	9.5
5/8	15.9
1	25.4
1-3/16	30.2
1-1/4	31.8
1-3/4	44.5
2	50.8
2-1/4	57.2
2-3/4	69.8
3-3/4	95.3
5-5/16	134.9
5-3/8	136.5
6	152.4
8	203.2
14	355.6
15-3/4	400.0
16-7/16	417.9
22	558.8
24	609.6
32	812.8

Fastener	Use	⌀ Preparation
1/4-20 machine screw	metal frame and metal door	#7 (.201" dia.) or 5.10mm. drill 1/4-20 tap
#14 wood screw	wood door	7/32" or 5.5 mm. drill

FOR PRODUCTS  
PRODUCED AFTER  
9-1-01

**7900H-CP Series Door Closers**  
**For Use on Doors Hung with Center Pivots**  
**Hold Open Installation**

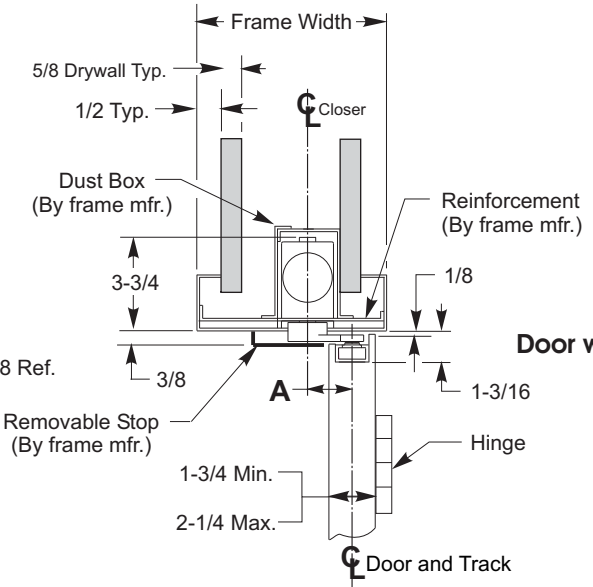
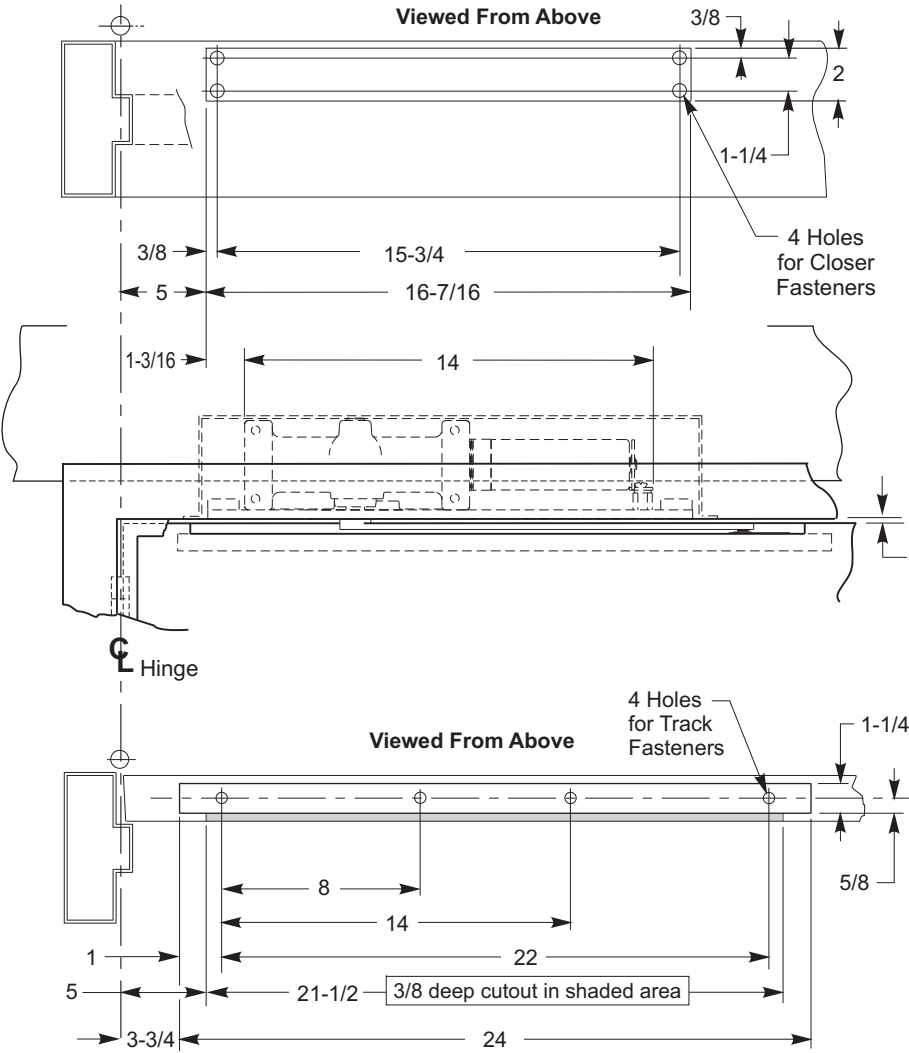


**Norton**

ASSA ABLOY

www.nortondoorcontrols.com

TEMPLATE NUMBER **7379-0258** DATE **01-09**



- NOTES:**
- Do not scale drawing.
  - Left hand door shown.
  - Hardware dimensions shown (not cutout).
  - Dimensions are in inches.
  - Minimum thickness recommended for reinforcements in hollow metal doors and frames: .1046" (2.66mm.) unless otherwise noted.
  - Minimum door width 29 inches.
  - Track is 24 inches long.
  - Maximum width hinge is 5 inches.

**Adjustable  
Hold Opening**

85°-110°

Door will travel 5° beyond hold open point

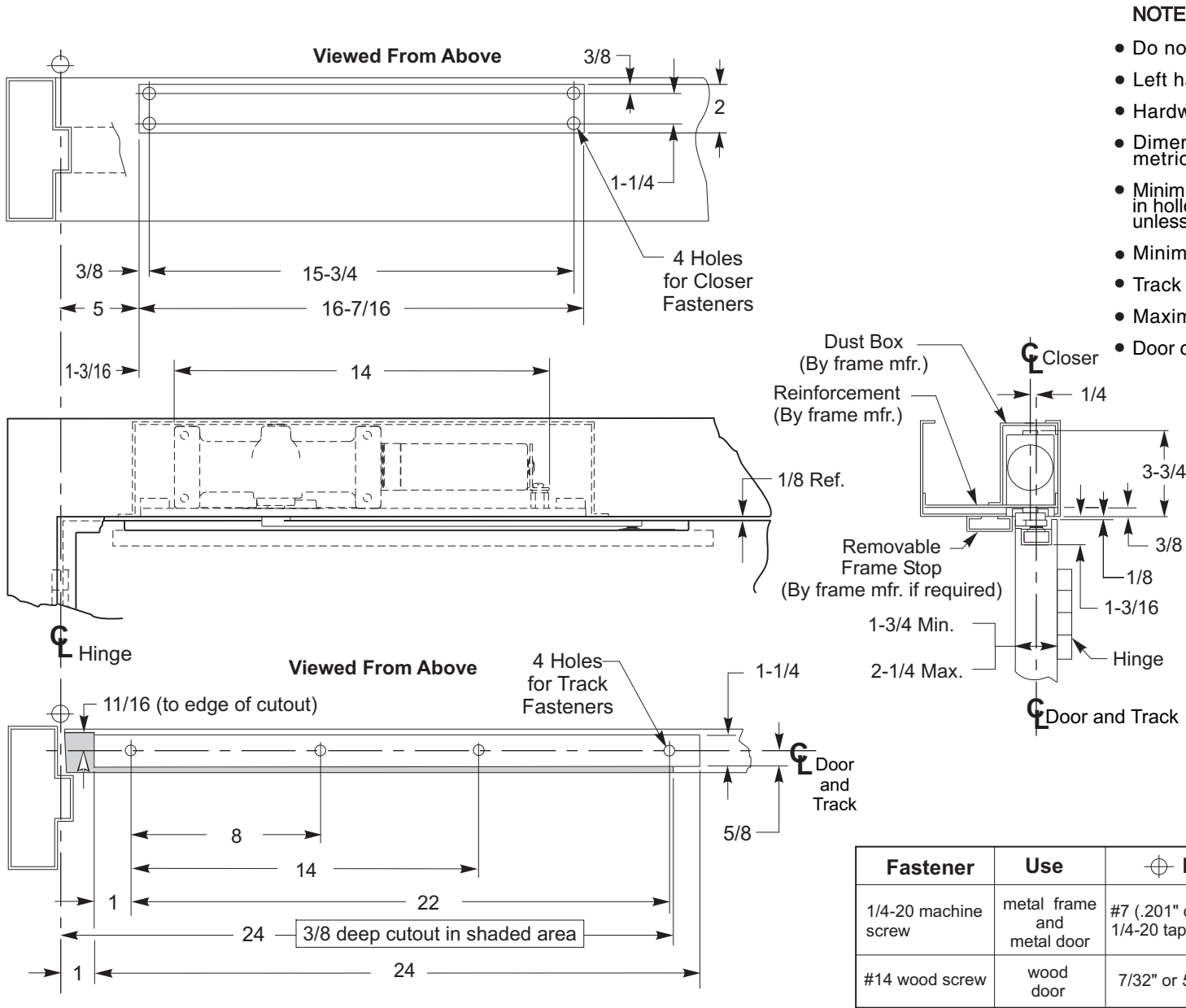
**NOTE:**  
Removable Frame Stop must have the stop Edge nearest the Door removed to permit arm clearance. Remove a section 15" long starting 7" from the centerline of the hinge.

A Offset
3/8
5/8
3/4
7/8
1-1/8
1-1/4
1-3/8
1-1/2
1-5/8

Fastener	Use	⊕ Preparation
1/4-20 machine screw	metal frame and metal door	#7 (.201" dia.) Drill 1/4-20 tap
#14 wood screw	wood door	7/32" drill

- Do not scale drawing.
- Left hand door shown.
- Hardware dimensions shown (not cutout).
- Dimensions are in inches (see chart for metric conversion).
- Minimum thickness recommended for reinforcements in hollow metal doors and frames: .1046" (2.66mm.) unless otherwise noted.
- Minimum door width 29 inches.
- Track IS 24 inches long.
- Maximum width hinge is 5 inches.

01-09



- NOTES:**
- Do not scale drawing.
  - Left hand door shown.
  - Hardware dimensions shown (not cutout).
  - Dimensions are in inches (see chart for metric conversion).
  - Minimum thickness recommended for reinforcements in hollow metal doors and frames: .1046" (2.66mm.) unless otherwise noted.
  - Minimum door width 27 inches.
  - Track 24 inches long.
  - Maximum width hinge is 5 inches.
  - Door can swing to 180 degrees, conditions permitting.

METRIC CONVERSION CHART	
Inches	mm.
1/8	3.2
1/4	6.4
3/8	9.5
5/8	15.9
11/16	17.5
1	25.4
1-3/16	30.2
1-1/4	31.8
1-3/4	44.5
2	50.8
2-1/4	57.2
3-3/4	95.3
5	127.0
8	203.2
14	355.6
15-3/4	400.0
16-7/16	417.5
22	558.8
24	609.6
27	685.8

Fastener	Use	⌀ Preparation
1/4-20 machine screw	metal frame and metal door	#7 (.201" dia.) or 5.10mm. drill 1/4-20 tap
#14 wood screw	wood door	7/32" or 5.5mm. drill

FOR PRODUCTS  
PRODUCED AFTER  
9-1-01

# 7900B Series Door Closers

## For Use on Doors Hung on 4-1/2" or 5" Wide Butt Hinges

### Non Hold Open Installation



**Norton**

ASSA ABLOY

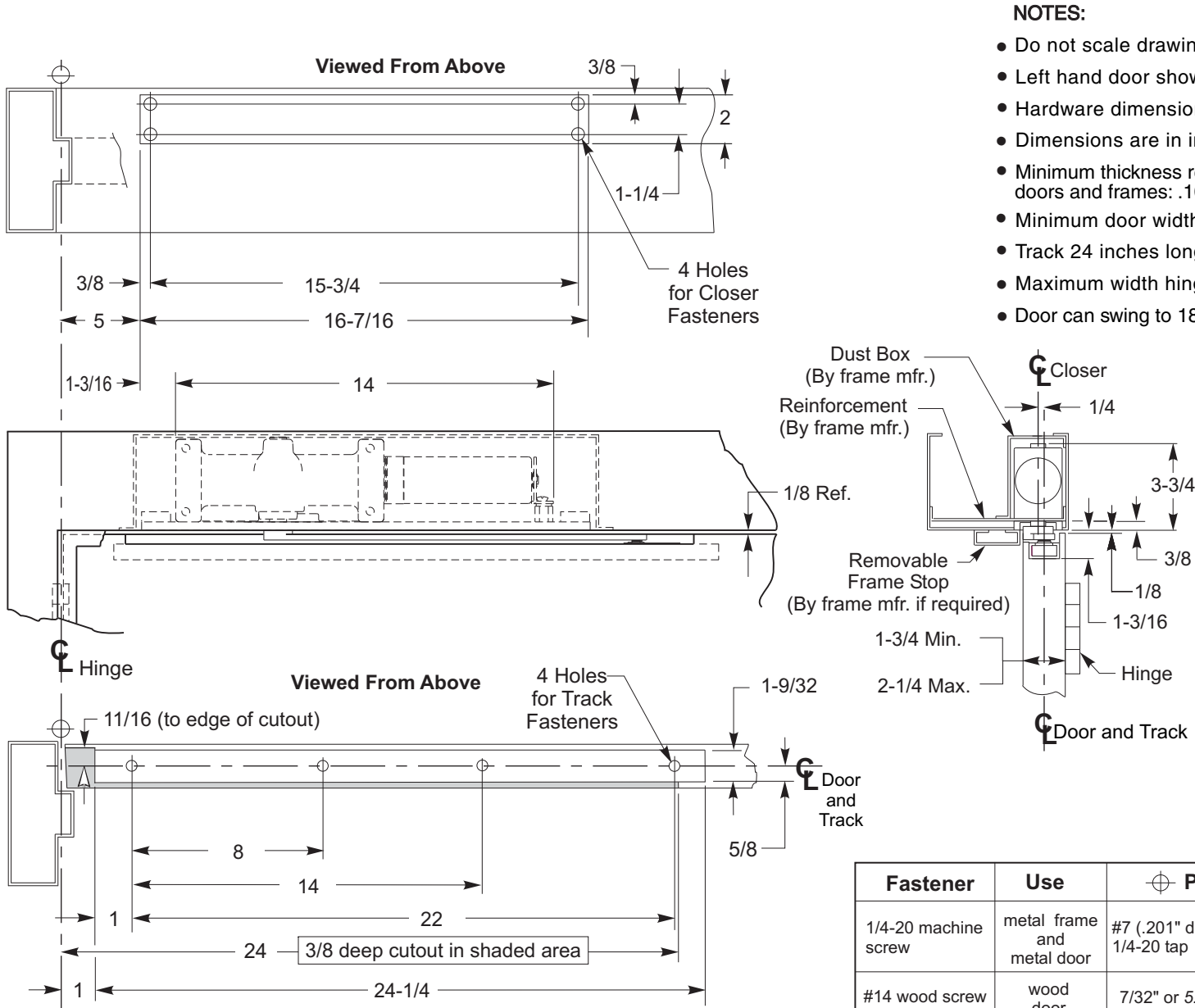
www.nortondoorcontrols.com

TEMPLATE NUMBER

7379-0251

DATE

01-09



- NOTES:**
- Do not scale drawing.
  - Left hand door shown.
  - Hardware dimensions shown (not cutout).
  - Dimensions are in inches (see chart for metric conversion).
  - Minimum thickness recommended for reinforcements in hollow metal doors and frames: .1046" (2.66mm.) unless otherwise noted.
  - Minimum door width 27 inches.
  - Track 24 inches long.
  - Maximum width hinge is 5 inches.
  - Door can swing to 180 degrees, conditions permitting.

METRIC CONVERSION CHART	
Inches	mm.
1/8	3.2
1/4	6.4
3/8	9.5
5/8	15.9
11/16	17.5
1	25.4
1-3/16	30.2
1-1/4	31.8
1-3/4	44.5
2	50.8
2-1/4	57.2
3-3/4	95.3
5	127.0
8	203.2
14	355.6
15-3/4	400.0
16-7/16	417.5
22	558.8
24	609.6
24-1/4	615.9
27	685.8

Fastener	Use	Preparation
1/4-20 machine screw	metal frame and metal door	#7 (.201" dia.) or 5.10mm. drill 1/4-20 tap
#14 wood screw	wood door	7/32" or 5.5mm. drill

**7900B Series Door Closers With 790 Fire Block**  
**For Use on Doors Hung on 4-1/2" or 5" Wide Butt Hinges**  
**Non Hold Open Installation**

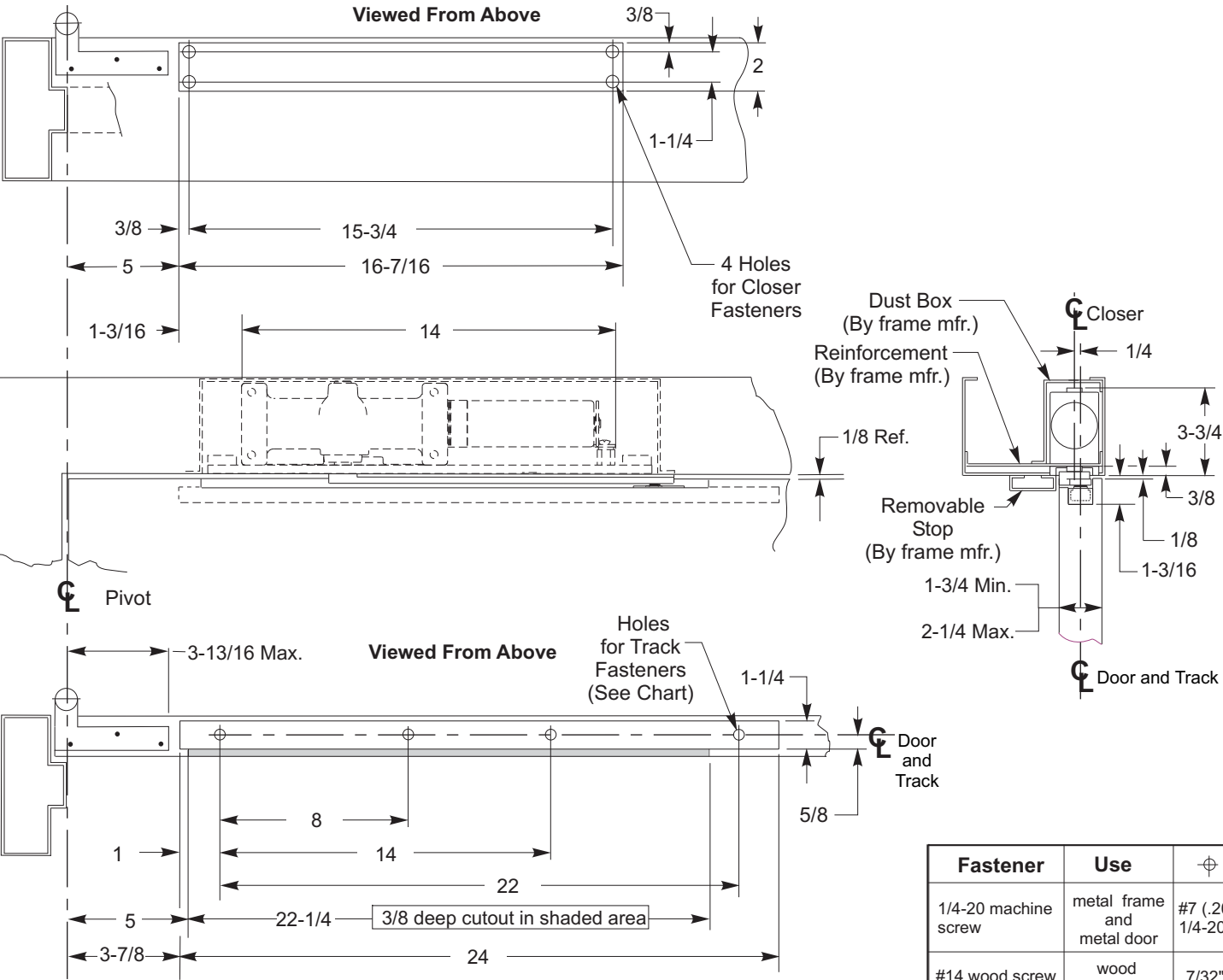


**Norton**  
ASSA ABLOY  
www.nortondoorcontrols.com

TEMPLATE NUMBER  
**7379-0252**

DATE  
**07-08**





- NOTES:**
- Do not scale drawing.
  - Left hand door shown.
  - Hardware dimensions shown (not cutout).
  - Dimensions are in inches (see chart for metric conversion).
  - Minimum thickness recommended for reinforcements in hollow metal doors and frames: .1046" (2.66mm.) unless otherwise noted.
  - Maximum door swing is 95 degrees. Auxiliary door stop (not supplied) is required for this application.
  - Standard track is 24 inches long.
  - For doors less than 29 inches wide, contact factory for modification requirements.

METRIC CONVERSION CHART	
Inches	mm.
1/8	3.2
1/4	6.4
3/8	9.5
5/8	15.9
1	25.4
1-3/16	30.1
1-1/4	31.8
1-3/4	44.5
2	50.8
2-1/4	57.2
3-3/4	95.3
3-13/16	96.8
3-7/8	98.4
5	127.0
8	203.2
14	355.6
15-3/4	400.0
16-7/16	417.5
22	558.8
22-1/4	565.1
24	609.6
29	736.6

Fastener	Use	⌀ Preparation
1/4-20 machine screw	metal frame and metal door	#7 (.201" dia.) or 5.10mm. drill 1/4-20 tap
#14 wood screw	wood door	7/32" or 5.5 mm. drill

FOR PRODUCTS  
PRODUCED AFTER  
9-1-01

7900OP Series Door Closers  
For Use on Doors with 3/4" Offset Pivots  
Non Hold Open Installation

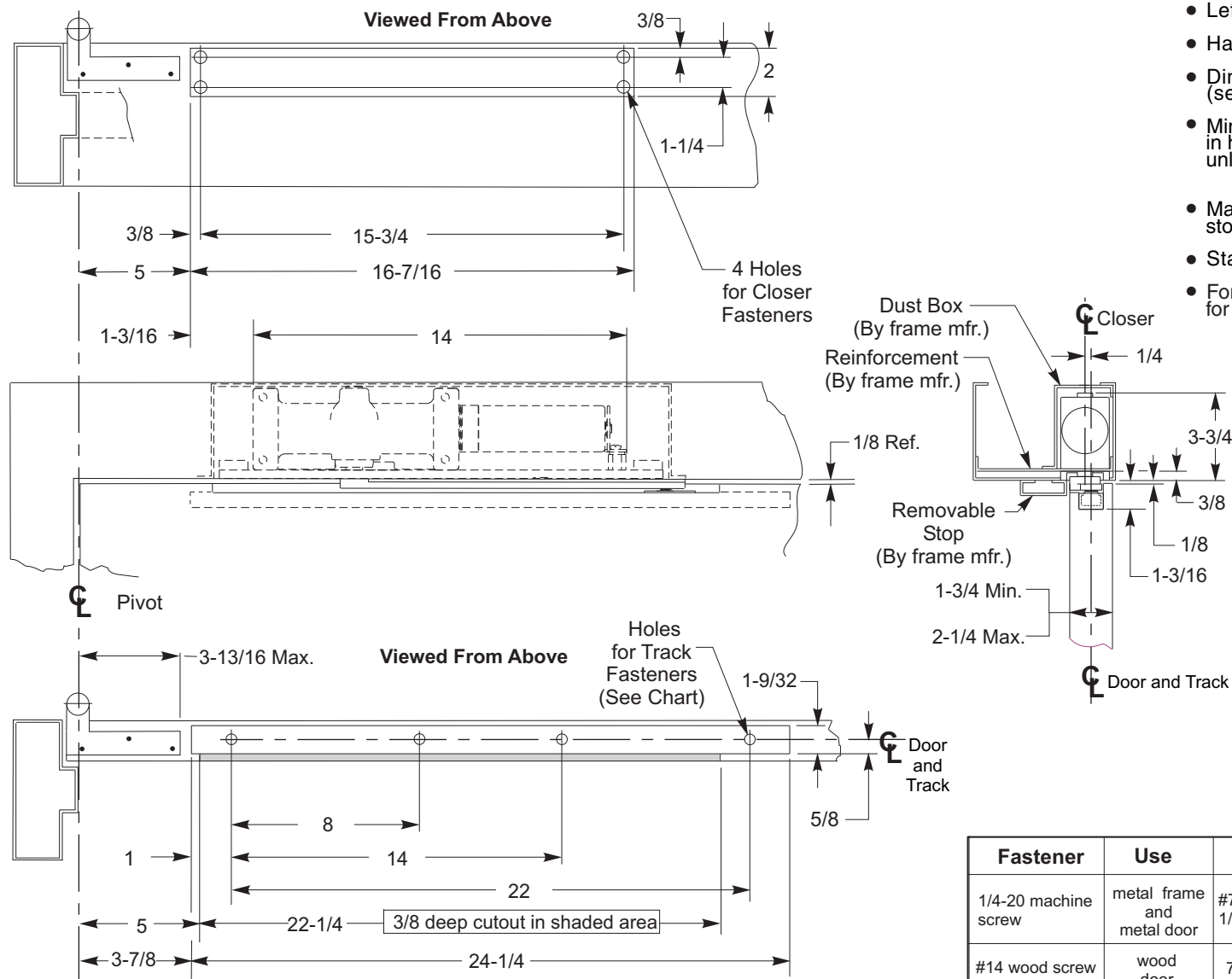


www.nortondoorcontrols.com



## NOTES:

- Do not scale drawing.
- Left hand door shown.
- Hardware dimensions shown (not cutout).
- Dimensions are in inches (see chart for metric conversion).
- Minimum thickness recommended for reinforcements in hollow metal doors and frames: .1046" (2.66mm.) unless otherwise noted.
- Maximum door swing is 95 degrees. Auxiliary door stop (not supplied) is required for this application.
- Standard track is 24 inches long.
- For doors less than 29 inches wide, contact factory for modification requirements.



METRIC CONVERSION CHART	
Inches	mm.
1/8	3.2
1/4	6.4
3/8	9.5
5/8	15.9
1	25.4
1-3/16	30.1
1-1/4	31.8
1-3/4	44.5
2	50.8
2-1/4	57.2
3-3/4	95.3
3-13/16	96.8
3-7/8	98.4
5	127.0
8	203.2
14	355.6
15-3/4	400.0
16-7/16	417.5
22	558.8
22-1/4	565.1
24	609.6
24-1/4	615.9
29	736.6

Fastener	Use	Preparation
1/4-20 machine screw	metal frame and metal door	#7 (.201" dia.) or 5.10mm. drill 1/4-20 tap
#14 wood screw	wood door	7/32" or 5.5 mm. drill

FOR PRODUCTS  
PRODUCED AFTER  
9-1-01

## 7900OP Series Door Closers x 790 Fire Bloc For Use on Doors with 3/4" Offset Pivots Non Hold Open Installation



**Norton**

ASSA ABLOY

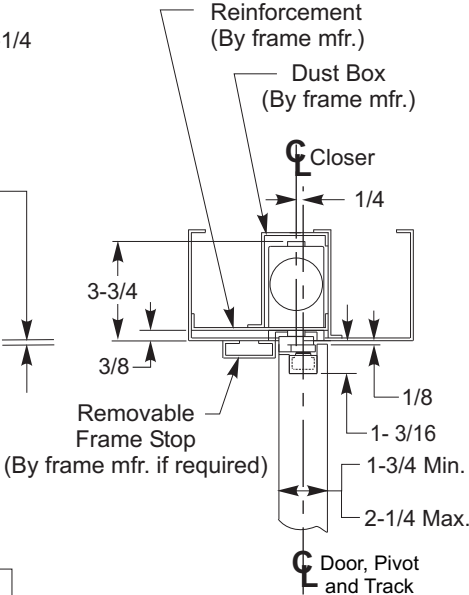
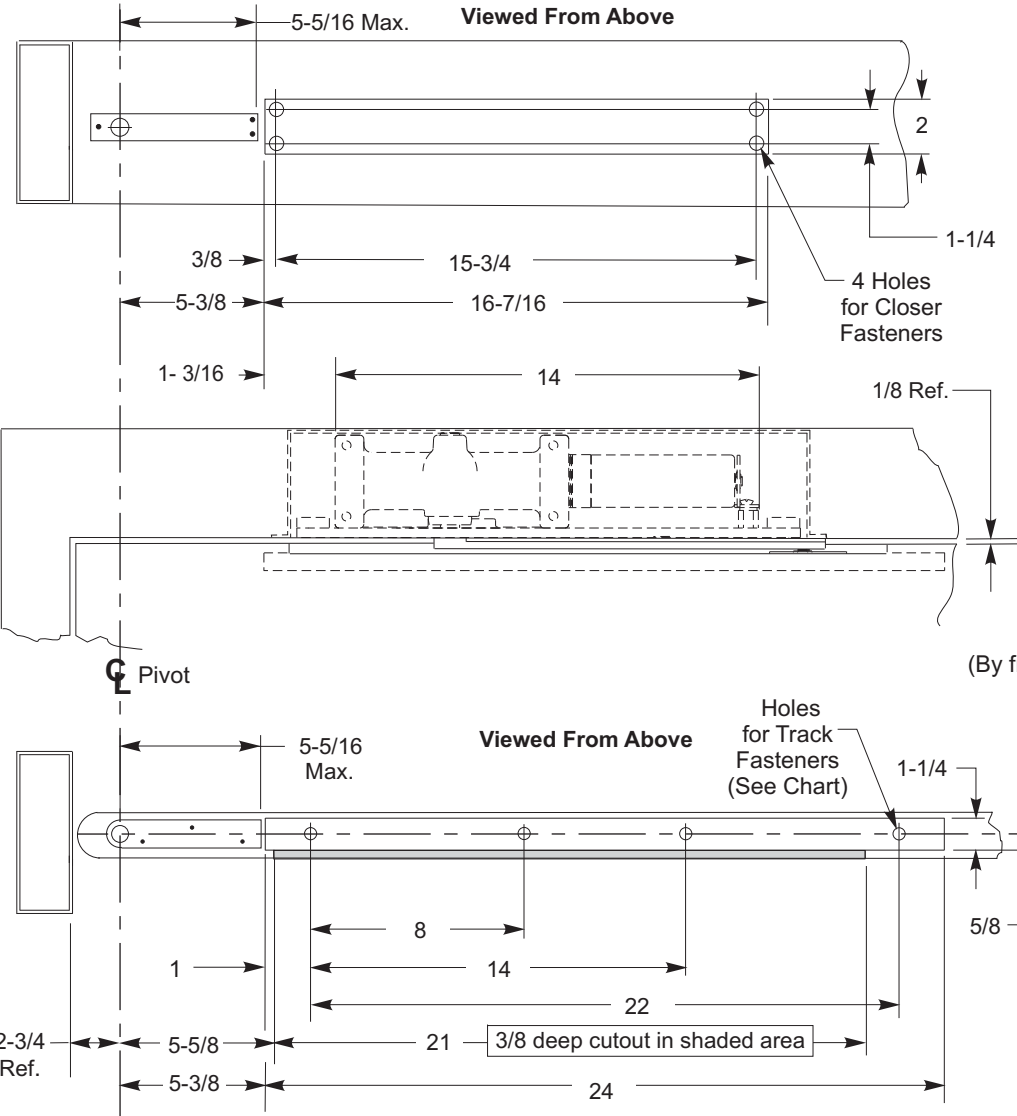
www.nortondoorcontrols.com

TEMPLATE NUMBER

**7379-0255**

DATE

**01-09**



Fastener	Use	⌀ Preparation
1/4-20 machine screw	metal frame and metal door	#7 (.201" dia.) or 5.10mm. drill 1/4-20 tap
#14 wood screw	wood door	7/32" or 5.5 mm. drill

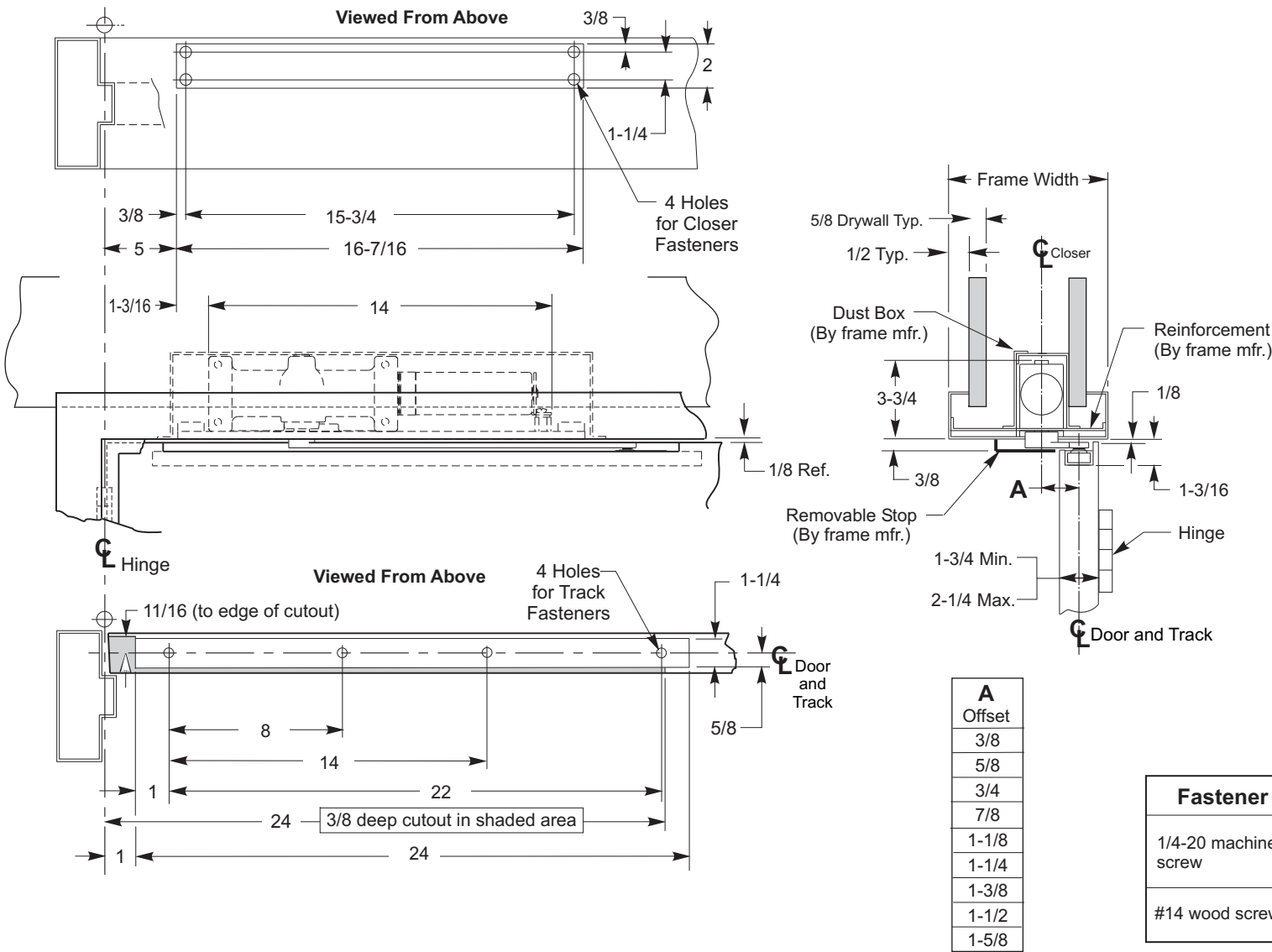
- NOTES:**
- Do not scale drawing.
  - Left hand door shown.
  - Hardware dimensions shown (not cutout).
  - Dimensions are in inches (see chart for metric conversion).
  - Maximum door swing is 95 degrees. Auxiliary door stop (not supplied) is required for this application.
  - Standard track is 24 inches long.
  - For doors less than 34" wide, contact factory for modification requirements.

METRIC CONVERSION CHART	
Inches	mm.
1/8	3.2
1/4	6.4
3/8	9.5
5/8	15.9
1	25.4
1-3/16	30.2
1-1/4	31.8
1-3/4	44.5
2	50.8
2-1/4	57.2
2-3/4	69.8
3-3/4	95.3
5-5/16	134.9
5-3/8	136.5
5-5/8	142.9
8	203.2
14	355.6
15-3/4	400.0
16-7/16	417.9
21	533.4
22	558.8
24	609.6
34	863.6

FOR PRODUCTS  
PRODUCED AFTER  
9-1-01

**7900CP Series Door Closers**  
**For Use on Doors with Center Pivots**  
**Non Hold Open Installation**

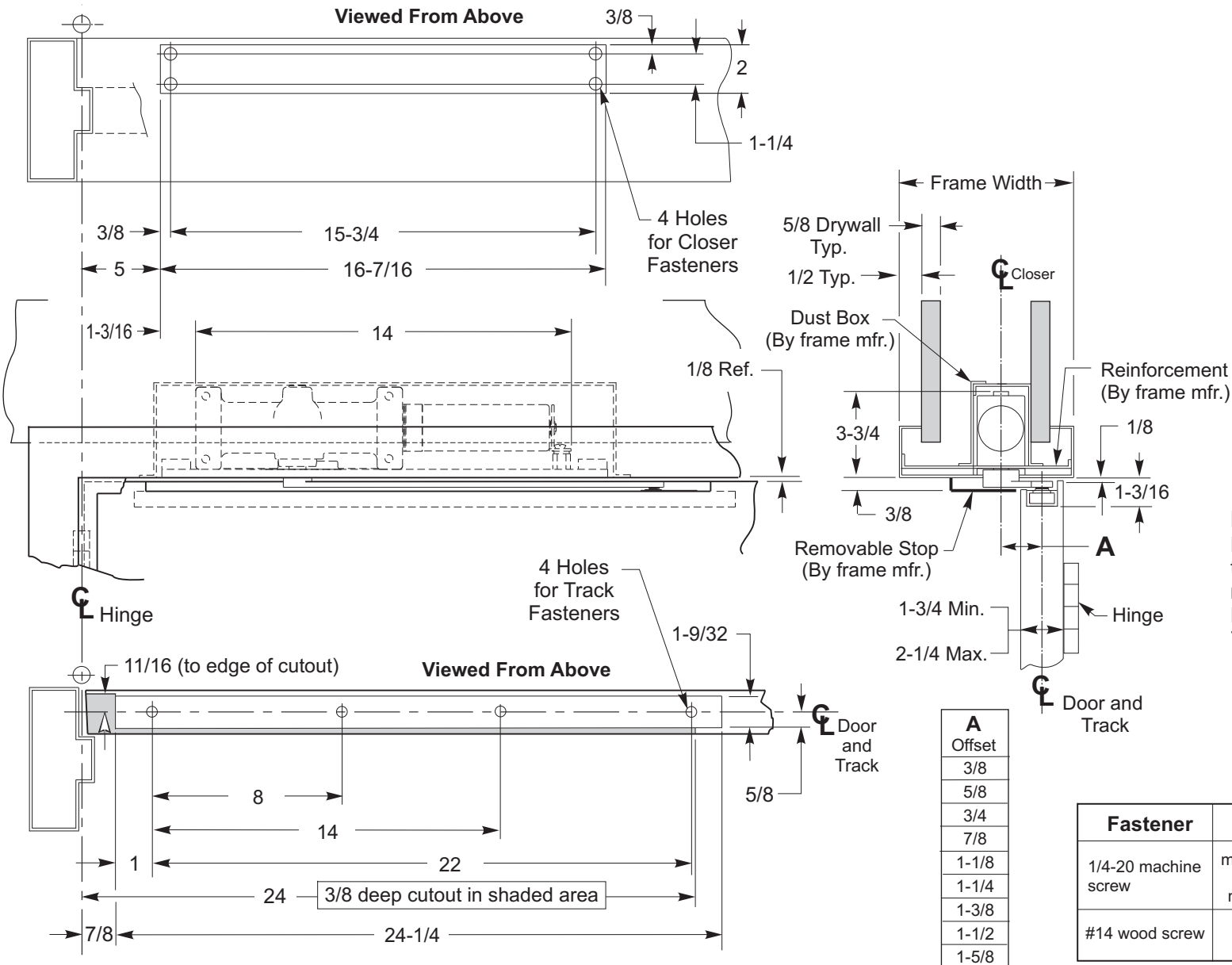




- NOTES:**
- Do not scale drawing.
  - Left hand door shown.
  - Hardware dimensions shown (not cutout).
  - Dimensions are in inches.
  - Minimum thickness recommended for reinforcements in hollow metal doors and frames: .1046" (2.66mm.) unless otherwise noted.
  - Minimum door width 27 inches.
  - Track is 24 inches long.
  - Maximum width hinge is 5 inches.
  - Door can swing to 180 degrees conditions permitting.

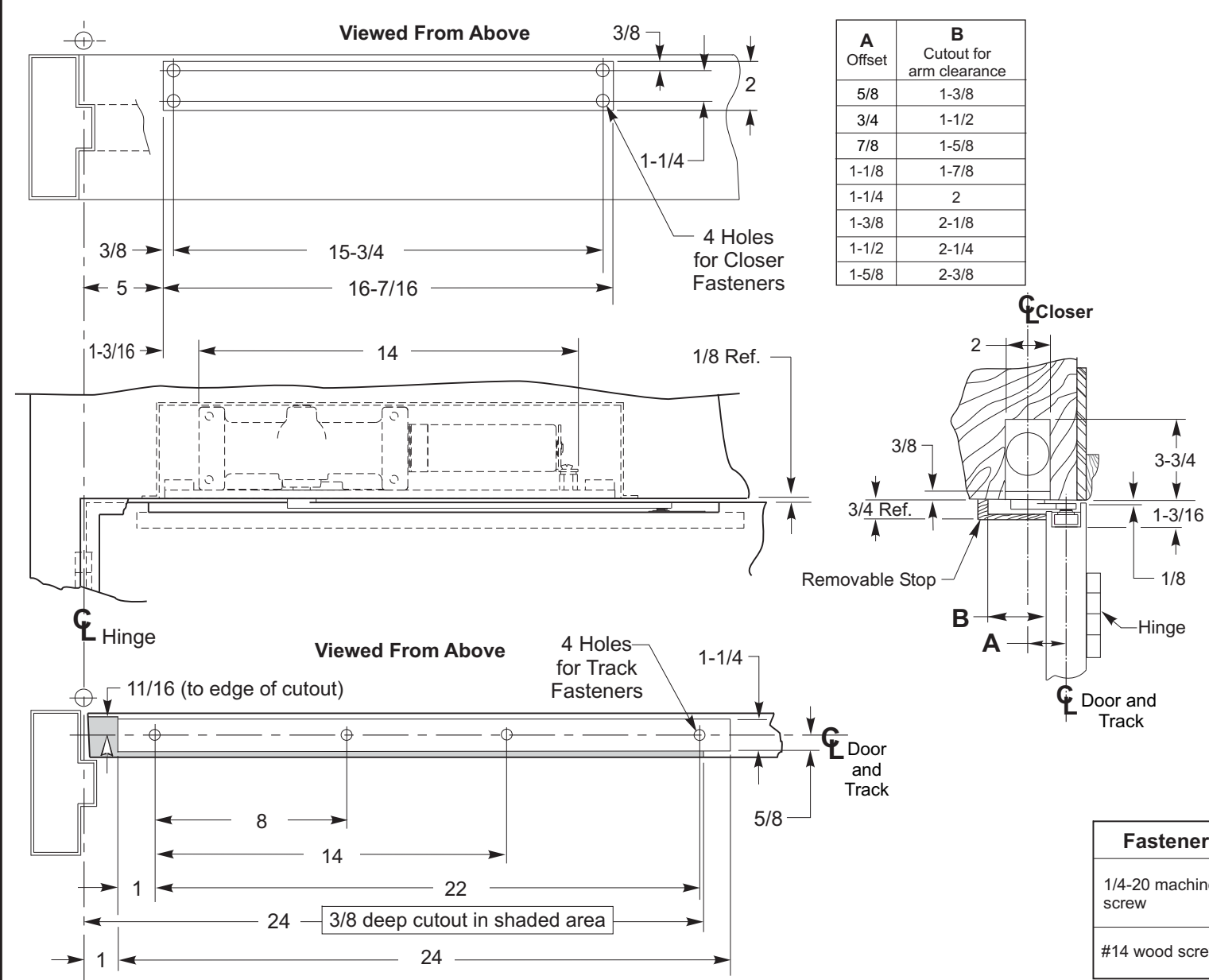
**NOTE:**  
Removable Frame Stop must have the stop Edge nearest the Door removed to permit arm clearance. Remove a section 15" long starting 7" from the centerline of the hinge.

Fastener	Use	⊕ Preparation
1/4-20 machine screw	metal frame and metal door	#7 (.201" dia.) Drill 1/4-20 tap
#14 wood screw	wood door	7/32" drill



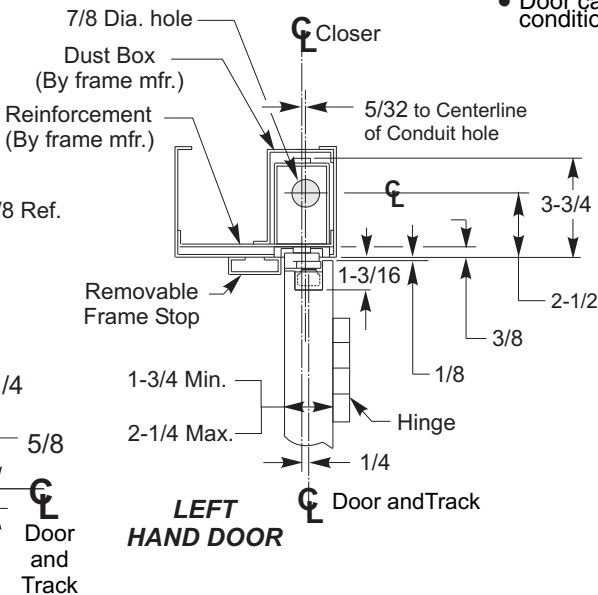
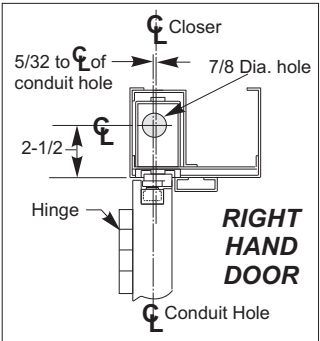
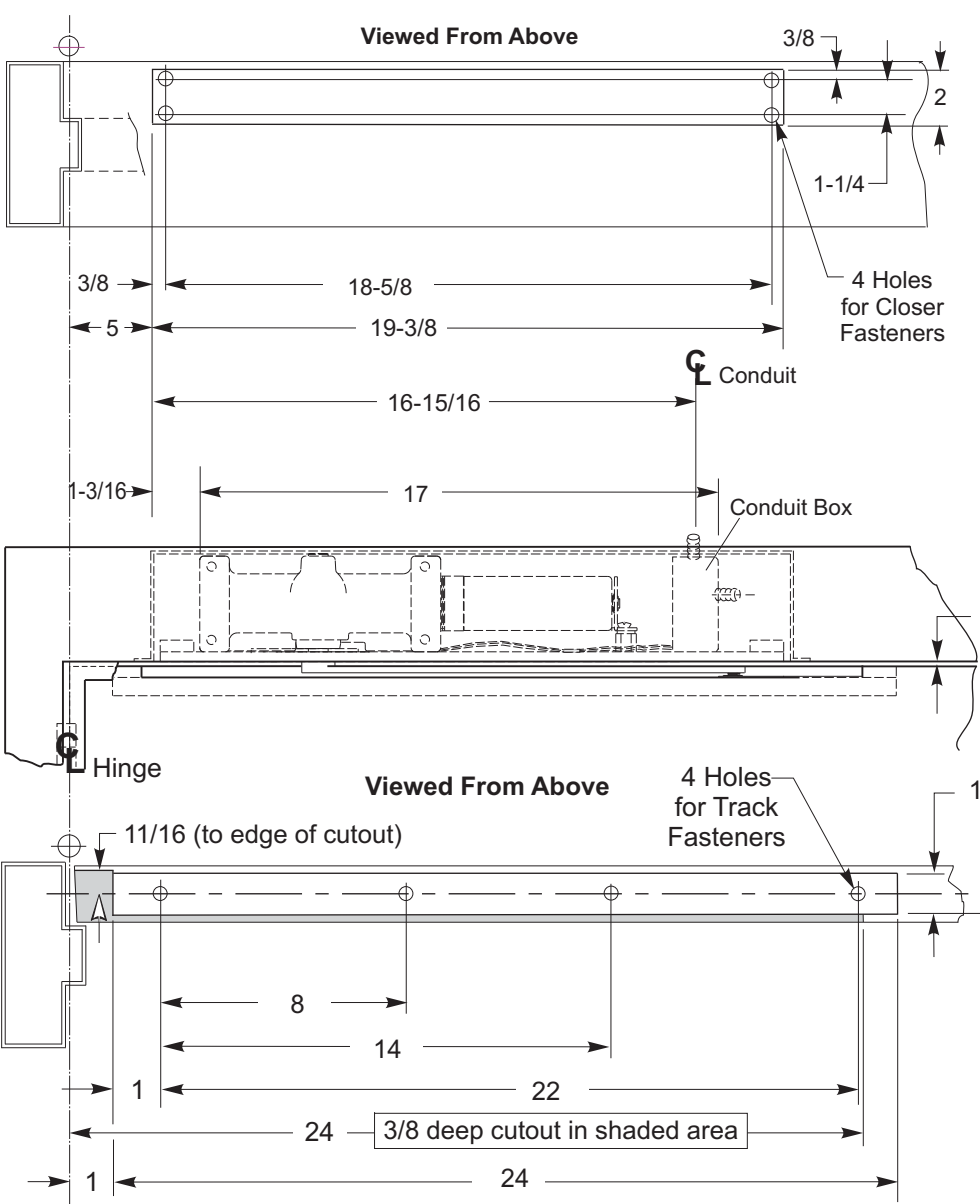
- NOTES:**
- Do not scale drawing.
  - Left hand door shown.
  - Hardware dimensions shown (not cutout).
  - Dimensions are in inches.
  - Minimum thickness recommended for reinforcements in hollow metal doors and frames: .1046" (2.66mm.) unless otherwise noted.
  - Minimum door width 27 inches.
  - Track is 24 inches long.
  - Maximum width hinge is 5 inches.
  - Door can swing to 180 degrees conditions permitting.

Fastener	Use	⊕ Preparation
1/4-20 machine screw	metal frame and metal door	#7 (.201" dia.) Drill 1/4-20 tap
#14 wood screw	wood door	7/32" drill



- NOTES:**
- Do not scale drawing.
  - Left hand door shown.
  - Hardware dimensions shown (not cutout).
  - Dimensions are in inches.
  - Minimum thickness recommended for reinforcements in hollow metal doors and frames: .1046" (2.66mm.) unless otherwise noted.
  - Minimum door width 27 inches.
  - Track is 24 inches long.
  - Maximum width hinge is 5 inches.
  - Door can swing to 180 degrees conditions permitting.
- NOTE:**  
Removable Frame Stop must have the stop Edge nearest the Door removed to permit arm clearance. Remove a section 15" long starting 7" from the centerline of the hinge.
- 3/4" high frame stop at head is recommended.

Fastener	Use	⊕ Preparation
1/4-20 machine screw	Metal door	#7 (.201" dia.) Drill 1/4-20 tap
#14 wood screw	wood door	7/32" drill



NOTES:

- Do not scale drawing.
- Left hand door shown.
- Hardware dimensions shown (not cutout).
- Dimensions are in inches (see chart for metric conversion).
- Minimum thickness recommended for reinforcements in hollow metal doors and frames: .1046" (2.66mm.) unless otherwise noted.
- Minimum door width 27 inches.
- Track is 24 inches long.
- Maximum width hinge is 5 inches.
- Door can swing to 180 degrees conditions permitting.

METRIC CONVERSION CHART	
Inches	mm.
1/8	3.2
1/4	6.4
3/8	9.5
5/8	15.9
11/16	17.5
1	25.4
1-3/16	30.2
1-1/4	31.8
1-3/4	44.5
2	50.8
2-1/4	57.2
3-3/4	95.3
5	127.0
8	203.2
14	355.6
18-5/8	473.0
19-3/8	492.1
22	558.8
24	609.6
27	685.8

Fastener	Use	⊕ Preparation
1/4-20 machine screw	metal frame and metal door	#7 (.201" dia.) or 5.10mm. drill 1/4-20 tap

FOR PRODUCTS  
PRODUCED AFTER  
9-1-01

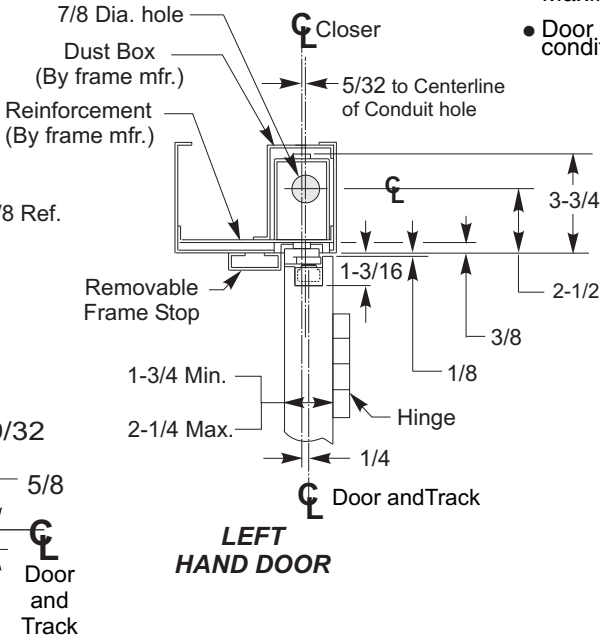
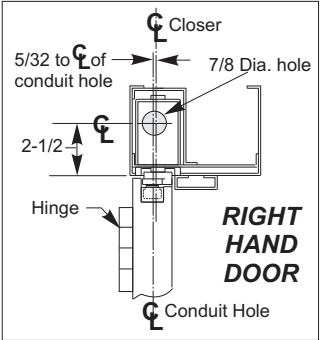
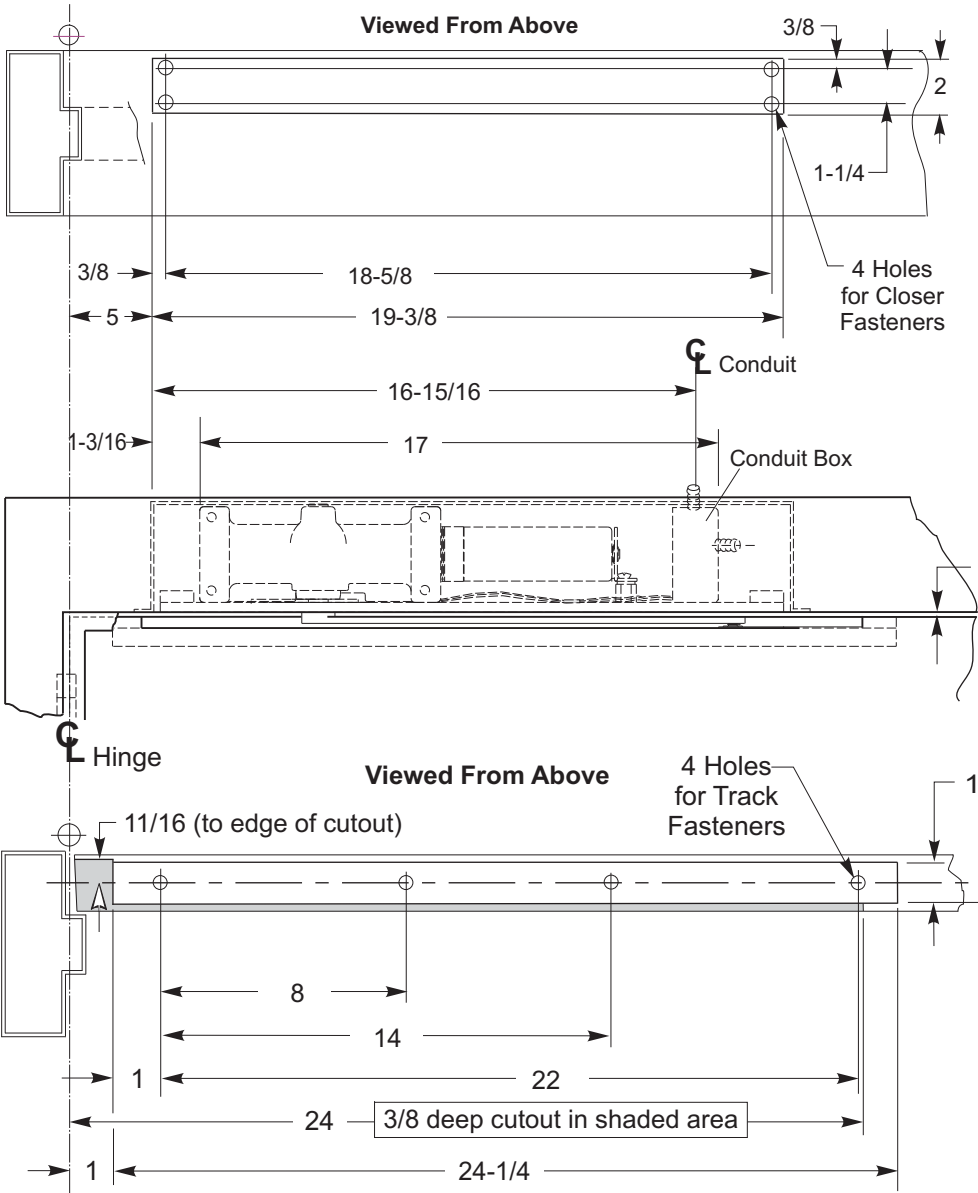
7970DPS-B Series Security Door Closers  
For Use on Doors Hung on 4-1/2" or 5" Wide Butt Hinges  
Non Hold Open Installation



Norton

ASSA ABLOY

www.nortondoortools.com



- NOTES:**
- Do not scale drawing.
  - Left hand door shown.
  - Hardware dimensions shown (not cutout).
  - Dimensions are in inches (see chart for metric conversion).
  - Minimum thickness recommended for reinforcements in hollow metal doors and frames: .1046" (2.66mm.) unless otherwise noted.
  - Minimum door width 27 inches.
  - Track is 24 inches long.
  - Maximum width hinge is 5 inches.
  - Door can swing to 180 degrees conditions permitting.

METRIC CONVERSION CHART	
Inches	mm.
1/8	3.2
1/4	6.4
3/8	9.5
5/8	15.9
11/16	17.5
1	25.4
1-3/16	30.2
1-1/4	31.8
1-3/4	44.5
2	50.8
2-1/4	57.2
3-3/4	95.3
5	127.0
8	203.2
14	355.6
18-5/8	473.0
19-3/8	492.1
22	558.8
24	609.6
24-1/4	615.9
27	685.8

Fastener	Use	Preparation
1/4-20 machine screw	metal frame and metal door	#7 (.201" dia.) or 5.10mm. drill 1/4-20 tap

FOR PRODUCTS  
PRODUCED AFTER  
9-1-01

7970DPS-B Series Security Door Closers x 790 Fire Bloc  
For Use on Doors Hung on 4-1/2" or 5" Wide Butt Hinges  
Non Hold Open Installation



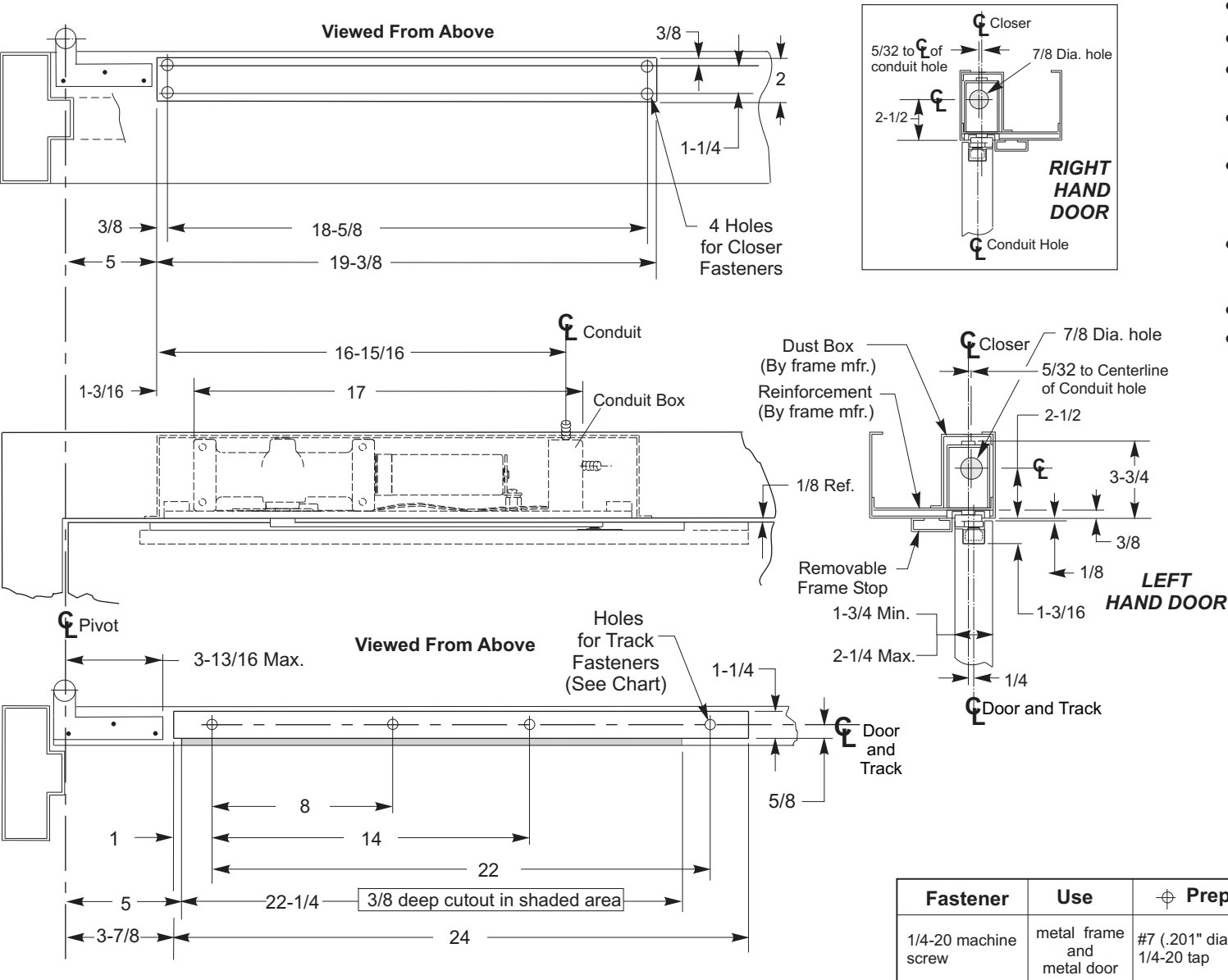
Norton

ASSA ABLOY

www.nortondoorcontrols.com

TEMPLATE NUMBER 7379-0652 DATE 01-09





- NOTES:**
- Do not scale drawing.
  - Left hand door shown.
  - Hardware dimensions shown (not cutout).
  - Dimensions are in inches (see chart for metric conversion).
  - Minimum thickness recommended for reinforcements in hollow metal doors and frames: .1046" (2.66mm.) unless otherwise noted.
  - Maximum door swing is 95 degrees. Auxiliary door stop (not supplied) is required for this application.
  - Track is 24 inches long.
  - For doors less than 29 inches wide, contact factory for modification requirements.

METRIC CONVERSION CHART	
Inches	mm.
1/8	3.2
1/4	6.4
3/8	9.5
5/8	15.9
1	25.4
1-3/16	30.1
1-1/4	31.8
1-3/4	44.5
2	50.8
2-1/4	57.2
3-3/4	95.3
3-13/16	96.8
3-7/8	98.4
5	127.0
8	203.2
14	355.6
18-5/8	473.0
19-3/8	492.1
22	558.8
22-1/4	565.1
24	609.6
29	736.6

Fastener	Use	Preparation
1/4-20 machine screw	metal frame and metal door	#7 (.201" dia.) or 5.10mm. drill 1/4-20 tap

FOR PRODUCTS  
PRODUCED AFTER  
9-1-01

7970DPS-OP Series Security Door Closers  
For Use on Doors Hung on 3/4" Offset Pivots  
Non Hold Open Installation



Norton

ASSA ABLOY

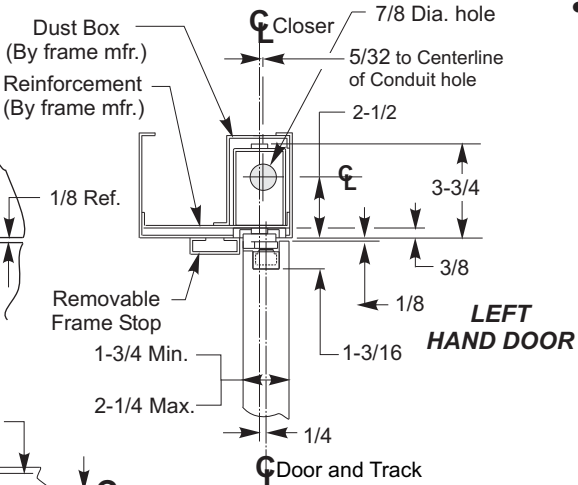
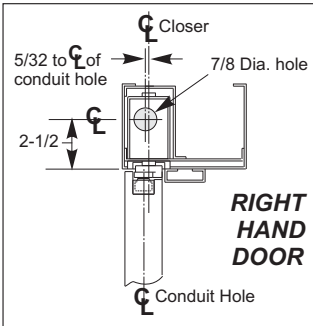
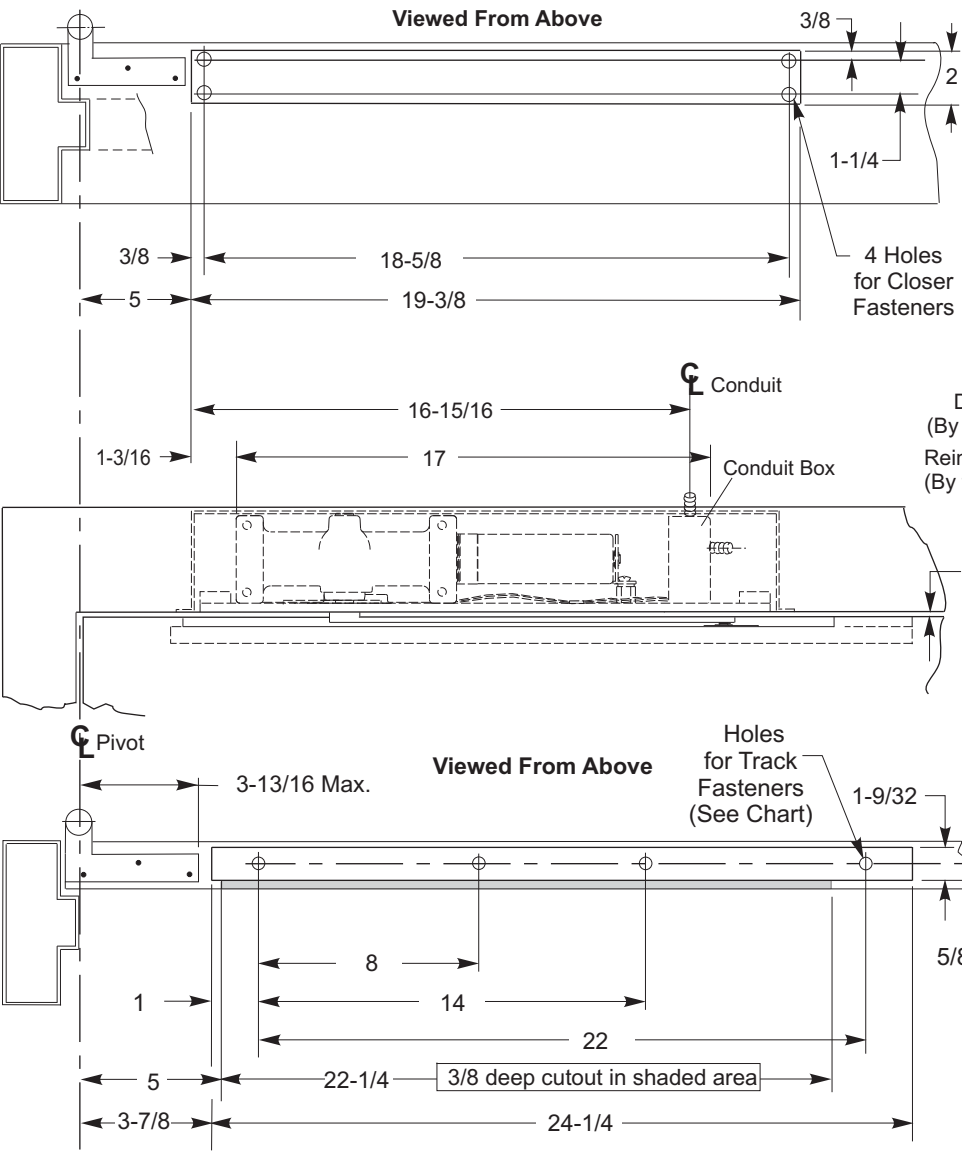
www.nortondoorcontrols.com

TEMPLATE NUMBER

7379-0654

DATE

01-09



- NOTES:**
- Do not scale drawing.
  - Left hand door shown.
  - Hardware dimensions shown (not cutout).
  - Dimensions are in inches (see chart for metric conversion).
  - Minimum thickness recommended for reinforcements in hollow metal doors and frames: .1046" (2.66mm.) unless otherwise noted.
  - Maximum door swing is 95 degrees. Auxiliary door stop (not supplied) is required for this application.
  - Track is 24 inches long.
  - For doors less than 29 inches wide, contact factory for modification requirements.

METRIC CONVERSION CHART	
Inches	mm.
1/8	3.2
1/4	6.4
3/8	9.5
5/8	15.9
1	25.4
1-3/16	30.1
1-1/4	31.8
1-3/4	44.5
2	50.8
2-1/4	57.2
3-3/4	95.3
3-13/16	96.8
3-7/8	98.4
5	127.0
8	203.2
14	355.6
18-5/8	473.0
19-3/8	492.1
22	558.8
22-1/4	565.1
24	609.6
24-1/4	615.9
29	736.6

Fastener	Use	⌀ Preparation
1/4-20 machine screw	metal frame and metal door	#7 (.201" dia.) or 5.10mm. drill 1/4-20 tap

FOR PRODUCTS  
PRODUCED AFTER  
9-1-01

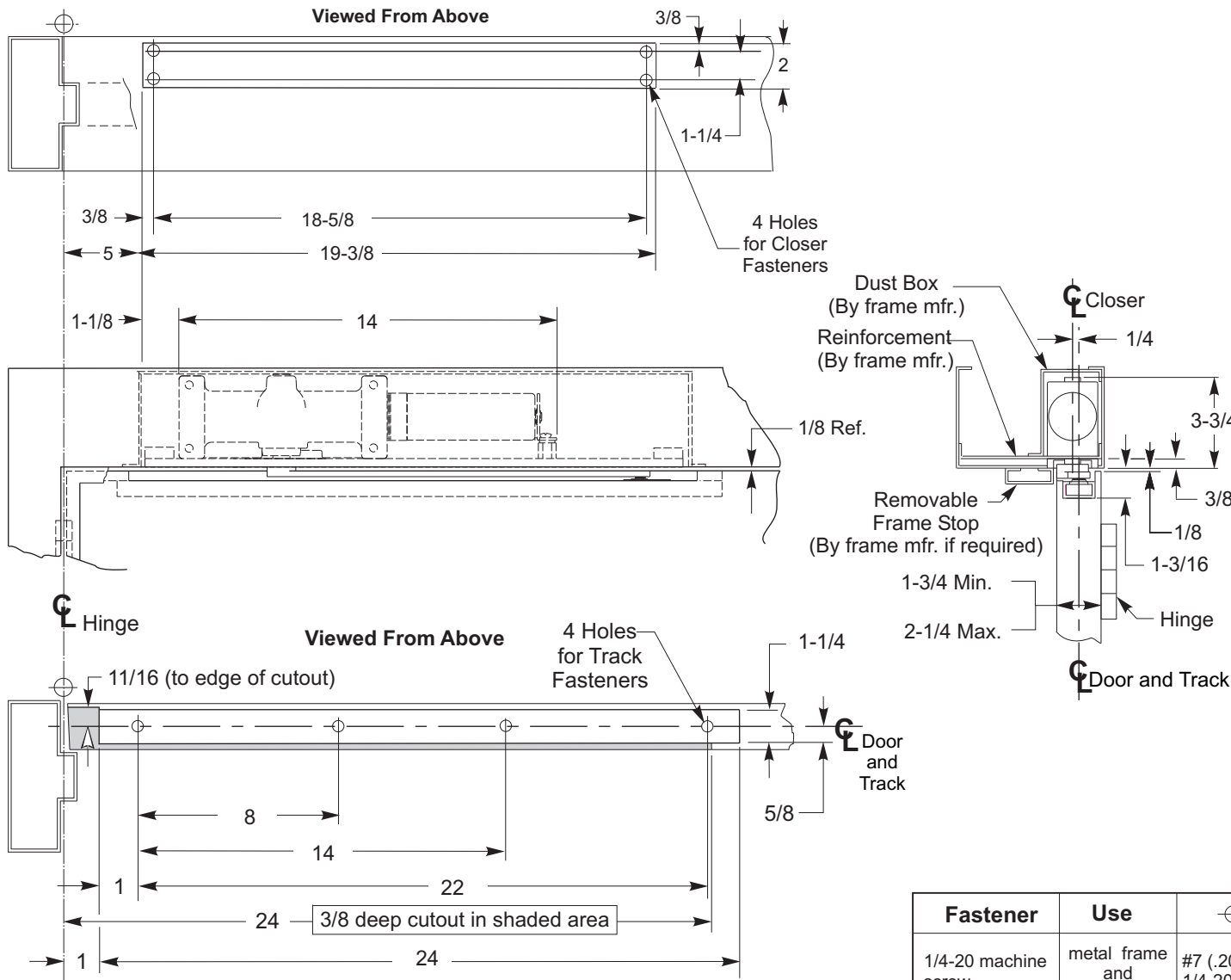
**7970DPS-OP Series Security Door Closers x 790 Fire Bloc**  
**For Use on Doors Hung on 3/4" Offset Pivots**  
**Non Hold Open Installation**



**Norton**  
ASSA ABLOY  
[www.nortondoorcontrols.com](http://www.nortondoorcontrols.com)

TEMPLATE NUMBER  
**7379-0655**

DATE  
**01-09**



NOTES:

- Do not scale drawing.
- Left hand door shown.
- Hardware dimensions shown (not cutout).
- Dimensions are in inches (see chart for metric conversion).
- Minimum thickness recommended for reinforcements in hollow metal doors and frames: .1046" (2.66mm.) unless otherwise noted.
- Minimum door width 27 inches.
- Track is 24 inches long.
- Maximum width hinge is 5 inches.
- Door can swing to 180 degrees conditions permitting.

METRIC CONVERSION CHART	
Inches	mm.
1/8	3.2
1/4	6.4
3/8	9.5
5/8	15.9
11/16	17.5
1	25.4
1-3/16	30.2
1-1/4	31.8
1-3/4	44.5
2	50.8
2-1/4	57.2
3-3/4	95.3
5	127.0
8	203.2
14	355.6
18-5/8	473.0
19-3/8	492.1
22	558.8
24	609.6
27	685.8

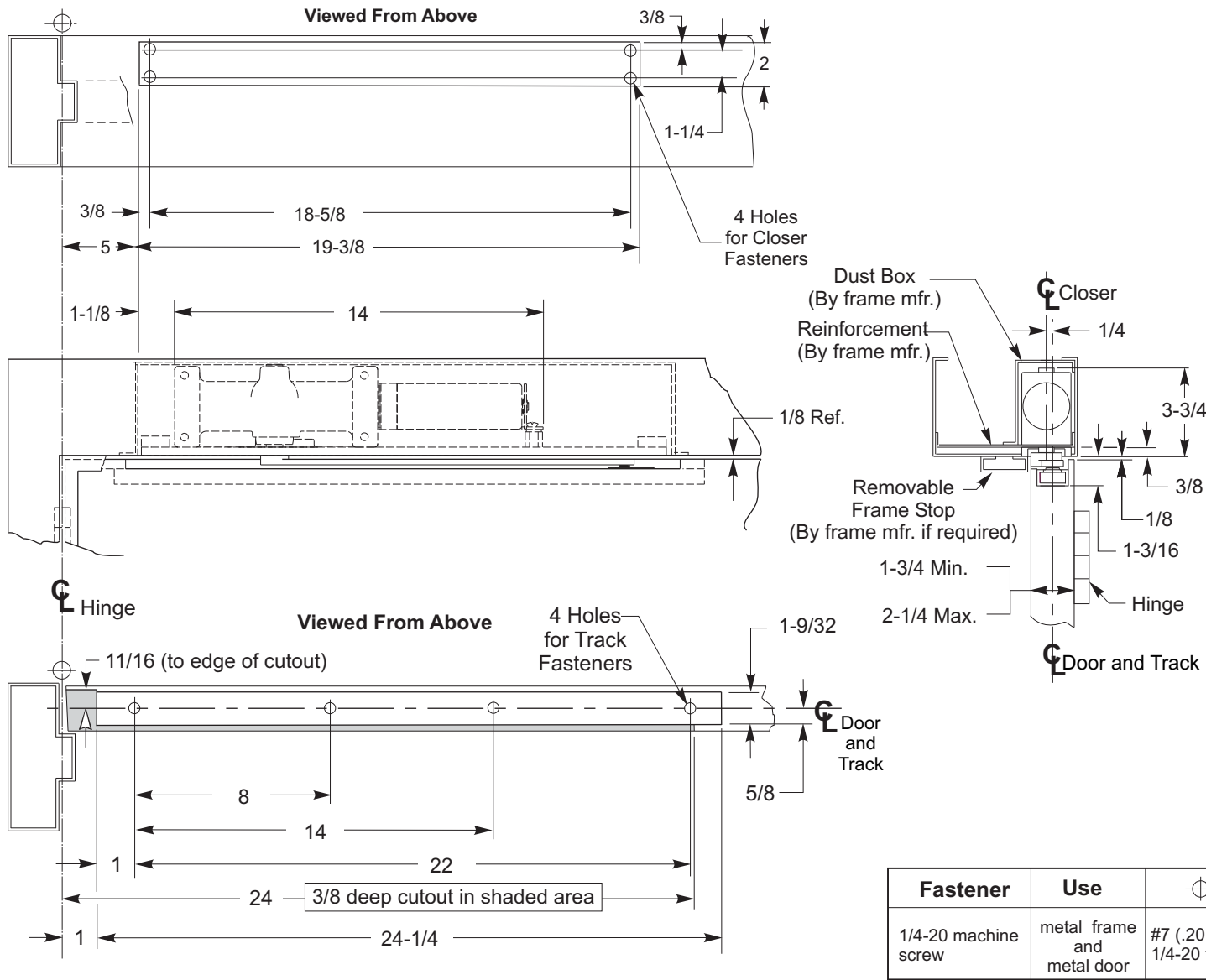
Fastener	Use	⊕ Preparation
1/4-20 machine screw	metal frame and metal door	#7 (.201" dia.) or 5.10mm. drill 1/4-20 tap

FOR PRODUCTS  
PRODUCED AFTER  
9-1-01

7970B Series Security Door Closers  
For Use on Doors Hung on 4-1/2" or 5" Wide Butt Hinges  
Non Hold Open Installation

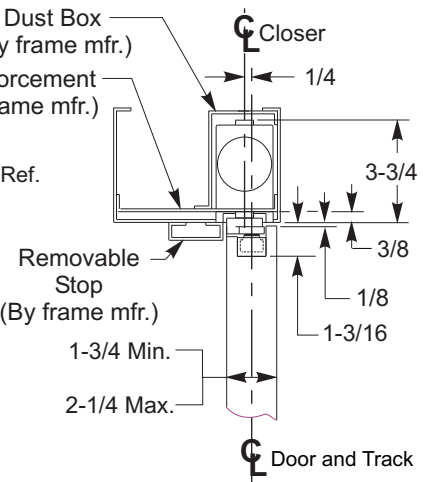
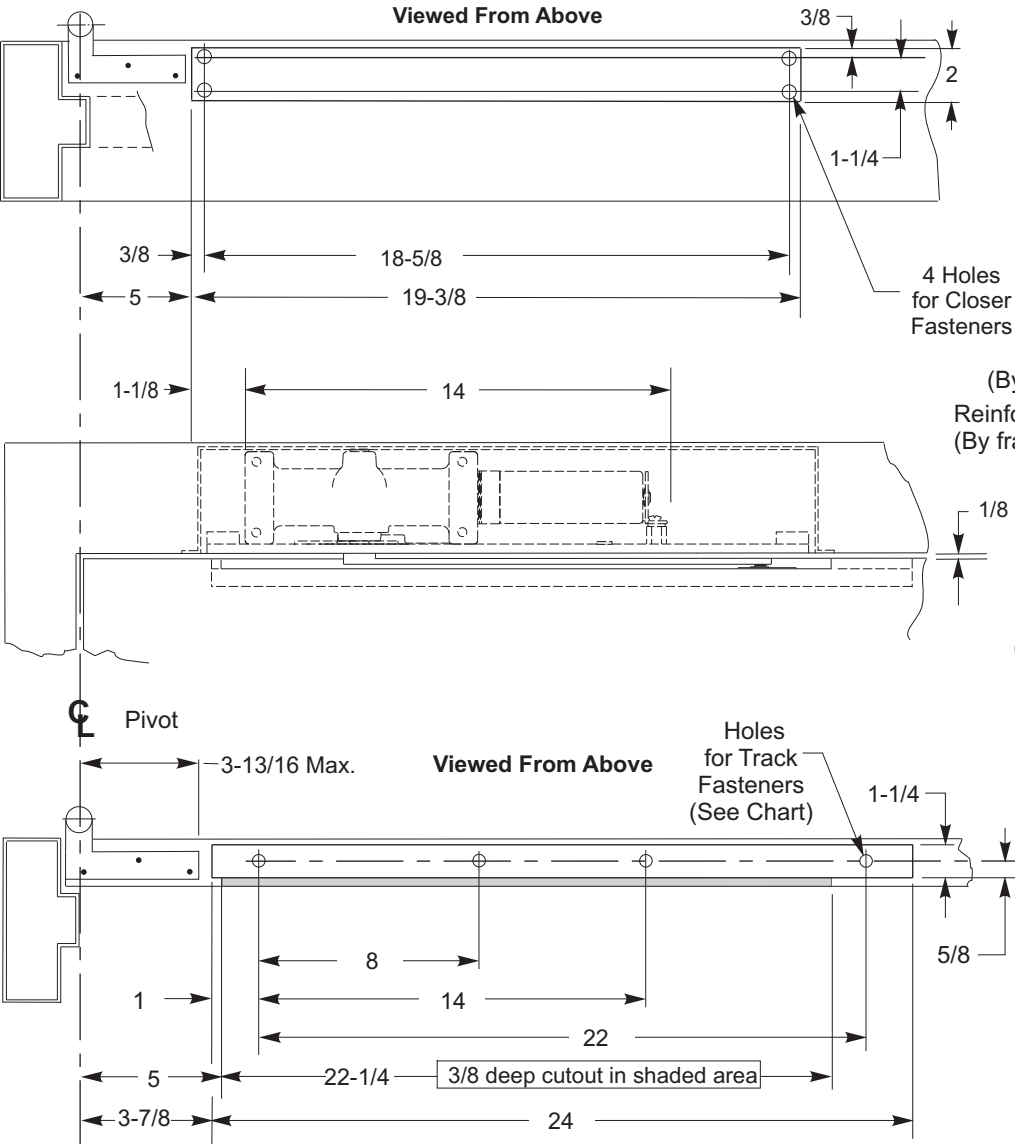


www.nortondoorcontrols.com



- NOTES:**
- Do not scale drawing.
  - Left hand door shown.
  - Hardware dimensions shown (not cutout).
  - Dimensions are in inches (see chart for metric conversion).
  - Minimum thickness recommended for reinforcements in hollow metal doors and frames: .1046" (2.66mm.) unless otherwise noted.
  - Minimum door width 27 inches.
  - Track is 24 inches long.
  - Maximum width hinge is 5 inches.
  - Door can swing to 180 degrees conditions permitting.

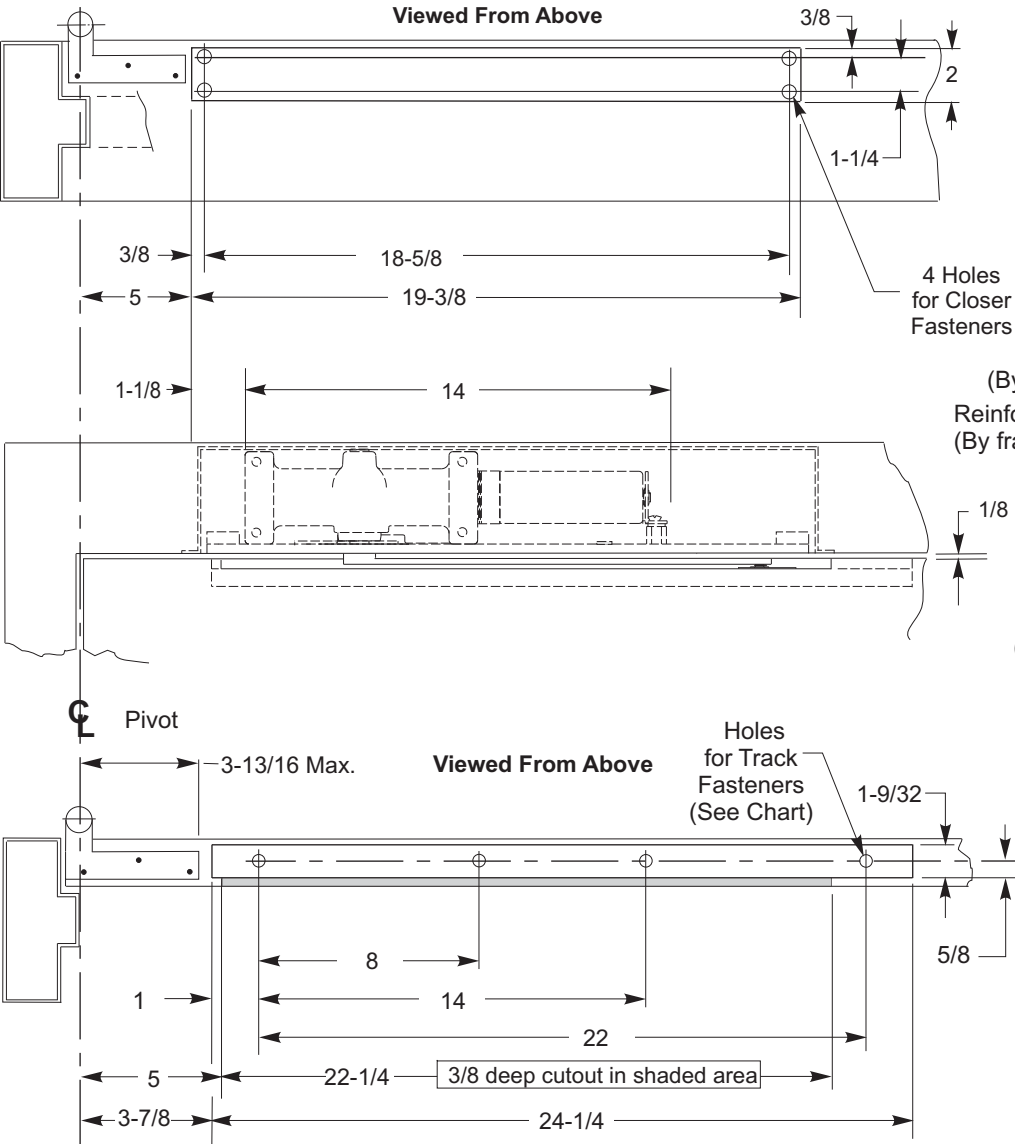
METRIC CONVERSION CHART	
Inches	mm.
1/8	3.2
1/4	6.4
3/8	9.5
5/8	15.9
11/16	17.5
1	25.4
1-3/16	30.2
1-1/4	31.8
1-3/4	44.5
2	50.8
2-1/4	57.2
3-3/4	95.3
5	127.0
8	203.2
14	355.6
18-5/8	473.0
19-3/8	492.1
22	558.8
24	609.6
24-1/4	615.9
27	685.8



- NOTES:**
- Do not scale drawing.
  - Left hand door shown.
  - Hardware dimensions shown (not cutout).
  - Dimensions are in inches (see chart for metric conversion).
  - Minimum thickness recommended for reinforcements in hollow metal doors and frames: .1046" (2.66mm.) unless otherwise noted.
  - Maximum door swing is 95 degrees. Auxiliary door stop (not supplied) is required for this application.
  - Standard track is 24 inches long.
  - For doors less than 29 inches wide, contact factory for modification requirements.

METRIC CONVERSION CHART	
Inches	mm.
1/8	3.2
1/4	6.4
3/8	9.5
5/8	15.9
1	25.4
1-3/16	30.1
1-1/4	31.8
1-3/4	44.5
2	50.8
2-1/4	57.2
3-3/4	95.3
3-13/16	96.8
3-7/8	98.4
5	127.0
8	203.2
14	355.6
18-5/8	473.0
19-3/8	492.1
22	558.8
22-1/4	565.1
24	609.6
29	736.6

Fastener	Use	⌀ Preparation
1/4-20 machine screw	metal frame and metal door	#7 (.201" dia.) or 5.10mm. drill 1/4-20 tap



- NOTES:**
- Do not scale drawing.
  - Left hand door shown.
  - Hardware dimensions shown (not cutout).
  - Dimensions are in inches (see chart for metric conversion).
  - Minimum thickness recommended for reinforcements in hollow metal doors and frames: .1046" (2.66mm.) unless otherwise noted.
  - Maximum door swing is 95 degrees. Auxiliary door stop (not supplied) is required for this application.
  - Standard track is 24 inches long.
  - For doors less than 29 inches wide, contact factory for modification requirements.

METRIC CONVERSION CHART	
Inches	mm.
1/8	3.2
1/4	6.4
3/8	9.5
5/8	15.9
1	25.4
1-3/16	30.1
1-1/4	31.8
1-3/4	44.5
2	50.8
2-1/4	57.2
3-3/4	95.3
3-13/16	96.8
3-7/8	98.4
5	127.0
8	203.2
14	355.6
18-5/8	473.0
19-3/8	492.1
22	558.8
22-1/4	565.1
24	609.6
24-1/4	615.9
29	736.6

Fastener	Use	⌀ Preparation
1/4-20 machine screw	metal frame and metal door	#7 (.201" dia.) or 5.10mm. drill 1/4-20 tap

FOR PRODUCTS  
PRODUCED AFTER  
9-1-01

7970-OP Series Security Door Closers x 790 Fire Bloc  
For Use on Doors Hung on 3/4" Offset Pivots  
Non Hold Open Installation



www.nortondoorcontrols.com