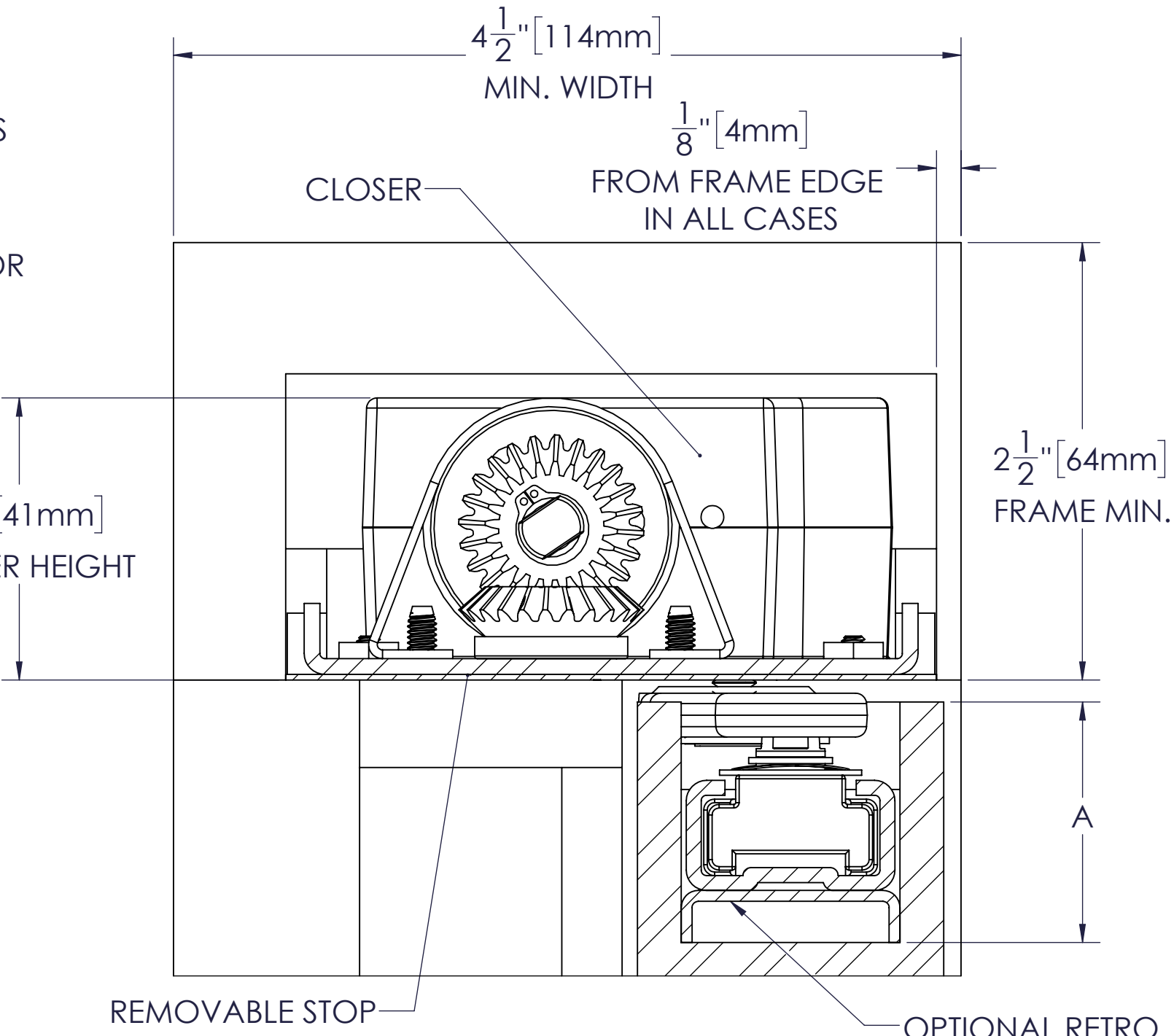


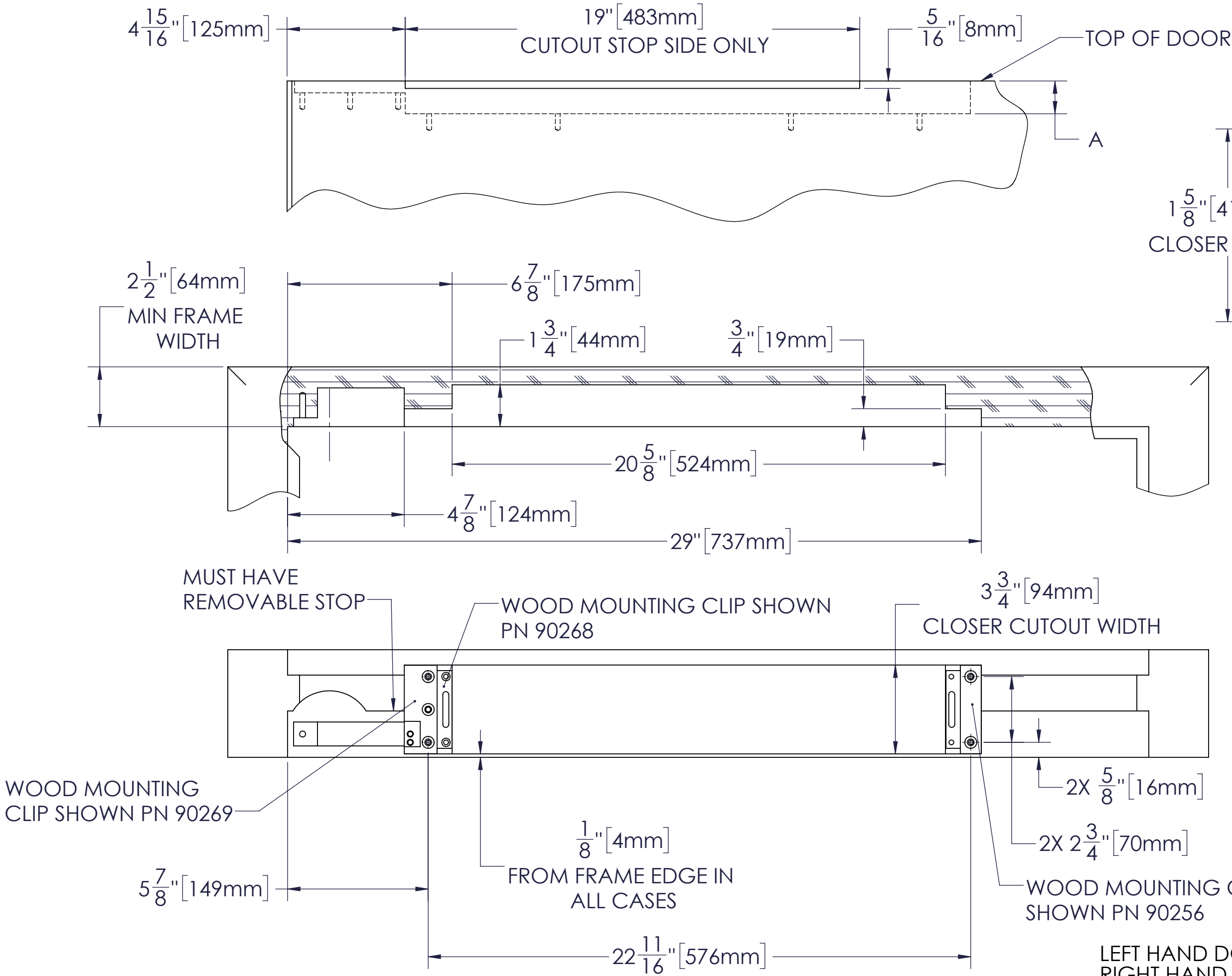
**MAX. DEGREE OF OPENING**  
93 NON HOLD OPEN (120°)  
93 NON HOLD OPEN WITH TRACK STOP (120°)  
93 HOLD OPEN (100°)

A REMOVABLE HEADSTOP MUST BE USED IN COMBINATION WITH THE CLOSER FOR PROPER INSTALLATION. MOUNTING HOLES FOR THE HEADSTOP MUST SPAN CLOSER LENGTH. HEADSTOP MUST BE REMOVABLE TO INSTALL CLOSER AND MAKE PROPER ADJUSTMENTS.



"A" Dimension	
Standard Application	1" - 1/16" (27)
Retrofit Track Option	1" - 3/8" (35)

- NOTES:
1. MINIMUM STOP THICKNESS 1/2".
  2. 1/8" DOOR TO SOFFIT CLEARANCE REQUIRED.
  3. REINFORCING PER ANSI/SDI-100 RECOMMENDED FOR HOLLOW METAL DOORS & FRAMES.
  4. HEADSTOP AND VERTICAL JAMB CUTOUT MUST NOT EXCEED PIVOT TO JAMB CLEARANCE.
  5. AUXILIARY STOP RECOMMENDED.
  6. DO NOT SCALE DRAWING
  7. CONSULT FACTORY FOR DOOR THICKNESSES GREATER THAN 1-3/4".



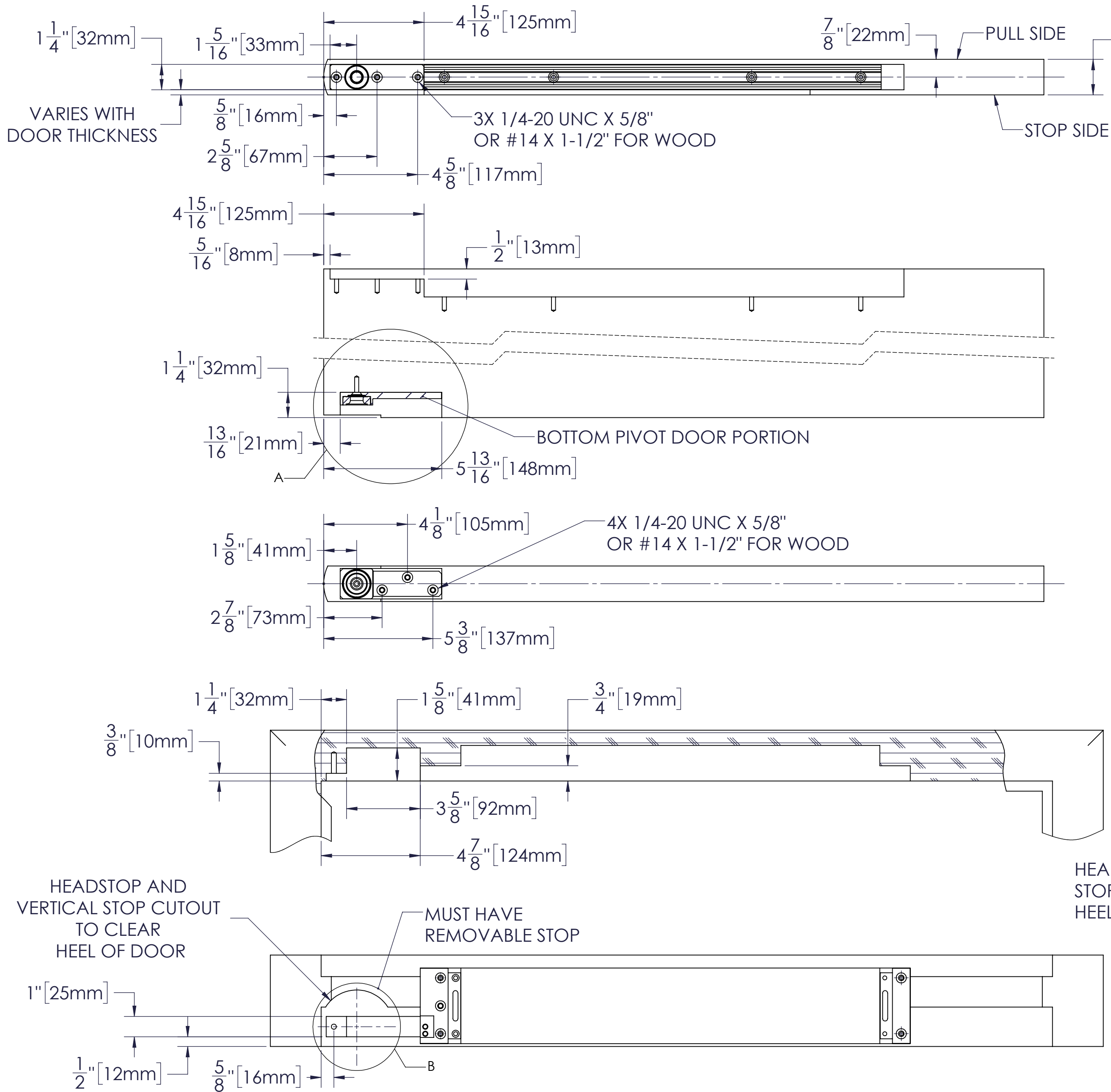
**MODEL W93 OVERHEAD CONCEALED CLOSER  
CENTER PIVOT, WOOD FRAME**

PRODUCT: **W93 OHC CLOSER**

**RIXSON**  
**ASSA ABLOY**

TEMPLATE NUMBER:  
**OC60939**

DATE:  
**07/2021**



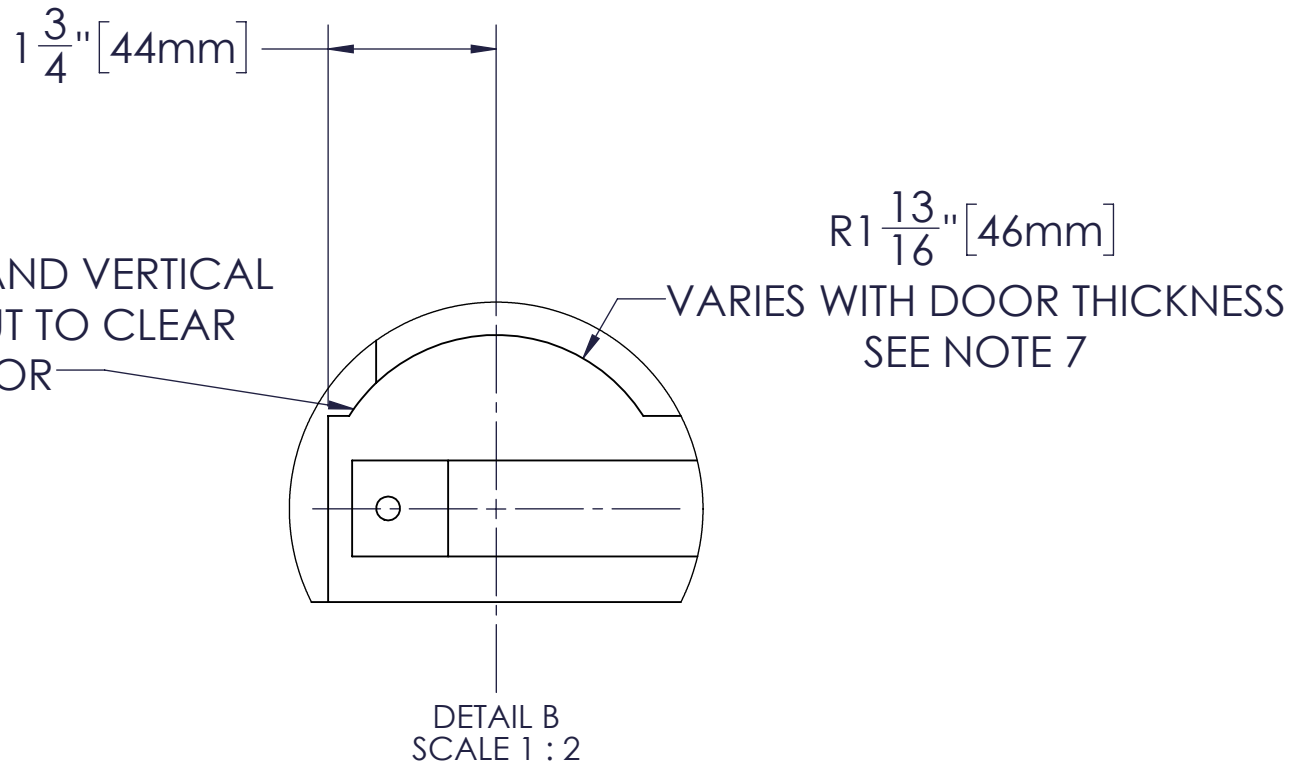
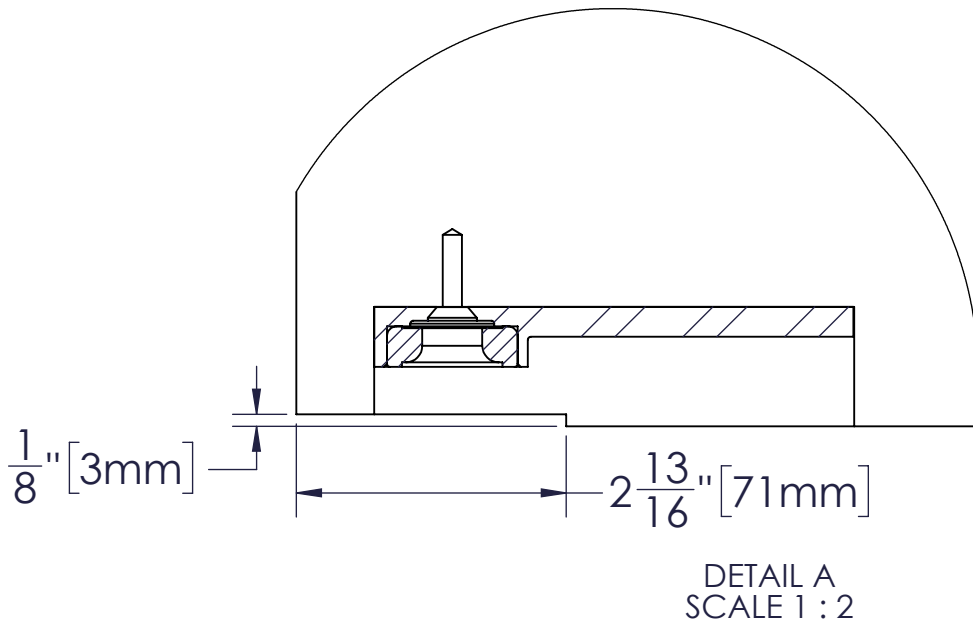
**MAX. DEGREE OF OPENING**

93 NON HOLD OPEN (120°)  
93 NON HOLD OPEN WITH TRACK STOP (120°)  
93 HOLD OPEN (100°)

A REMOVABLE HEADSTOP MUST BE USED IN COMBINATION WITH THE CLOSER FOR PROPER INSTALLATION. MOUNTING HOLES FOR THE HEADSTOP MUST SPAN CLOSER LENGTH. HEADSTOP MUST BE REMOVABLE TO INSTALL CLOSER AND MAKE PROPER ADJUSTMENTS.

**NOTES:**

1. MINIMUM STOP THICKNESS 1/2".
2. 1/8" DOOR TO SOFFIT CLEARANCE REQUIRED.
3. REINFORCING PER ANSI/SDI-100 RECOMMENDED FOR HOLLOW METAL DOORS & FRAMES.
4. HEADSTOP AND VERTICAL JAMB CUTOUT MUST NOT EXCEED PIVOT TO JAMB CLEARANCE.
5. AUXILIARY STOP RECOMMENDED.
6. DO NOT SCALE DRAWING
7. CONSULT FACTORY FOR DOOR THICKNESSES GREATER THAN 1-3/4".



LEFT HAND DOOR AND CLOSER SHOWN.  
RIGHT HAND OPPOSITE.

**MODEL W93 OVERHEAD CONCEALED CLOSER  
CENTER PIVOT, WOOD FRAME**

PRODUCT:		W93 OHC CLOSER	
		<div><div>RIXSON®</div><div>ASSA ABLOY</div></div>	
TEMPLATE NUMBER:		OC60939	DATE: 07/2021