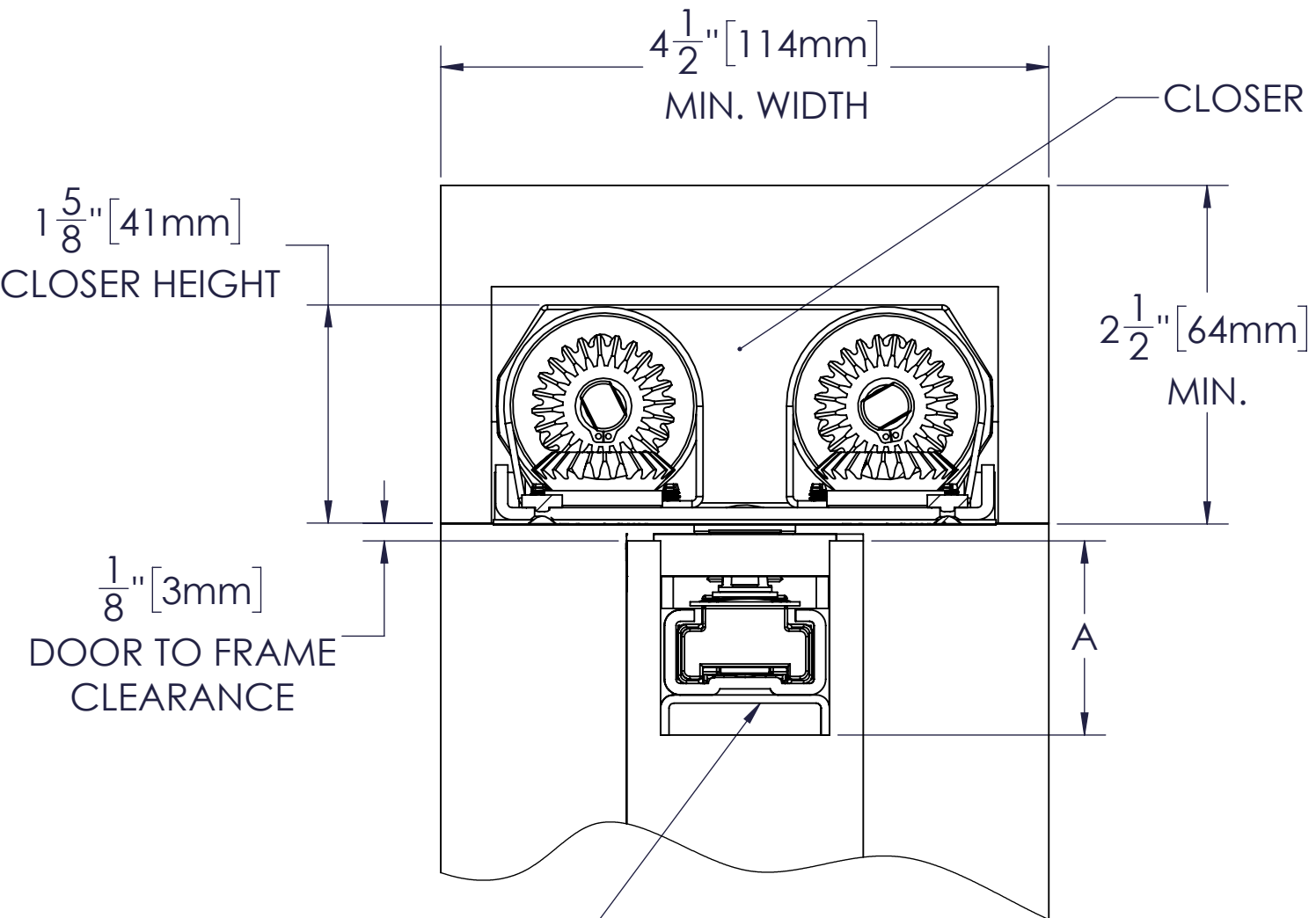
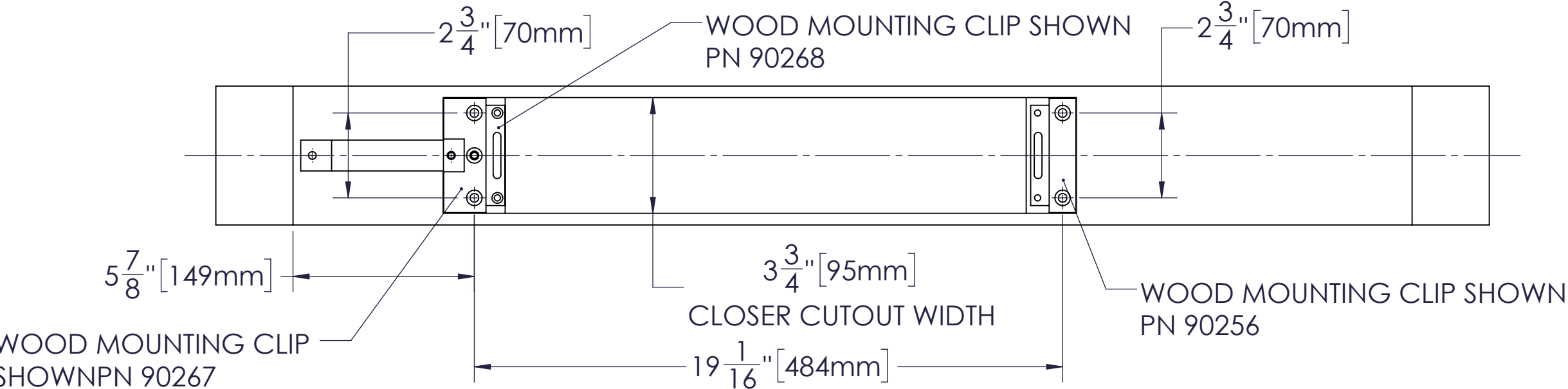


MAX. DEGREE OF OPENING
W73 NON HOLD OPEN (95°)
W73 NON HOLD OPEN WITH TRACK STOP (95°)
W73 HOLD OPEN (95°)



"A" Dimension	
Standard Application	1" - 1/8" (28.5)
Retrofit Track Option	1" - 7/16" (36.5)

- NOTES:
- 1/8" DOOR TO SOFFIT CLEARANCE REQUIRED.
 - REINFORCING PER ANSI/SDI-100 RECOMMENDED FOR HOLLOW METAL DOORS.
 - AUXILIARY STOP RECOMMENDED.
 - DO NOT SCALE DRAWING
 - RECOMMENDED WOOD FRAME 4-1/2" X 2-1/2"



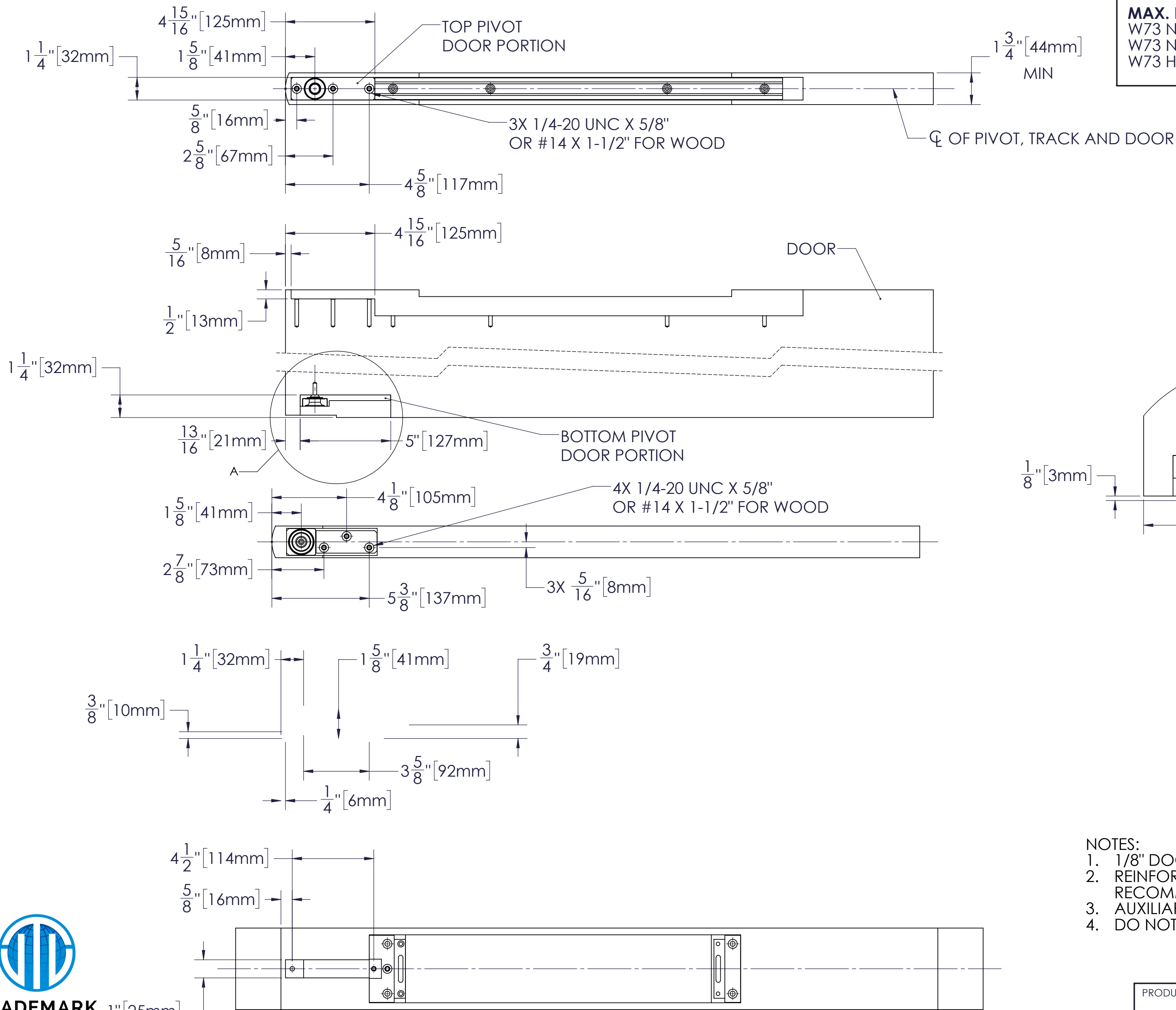
**MODEL W73 OVERHEAD CONCEALED CLOSER
AND CENTER PIVOT, WOOD FRAME**

PRODUCT: **W73 OHC CLOSER**

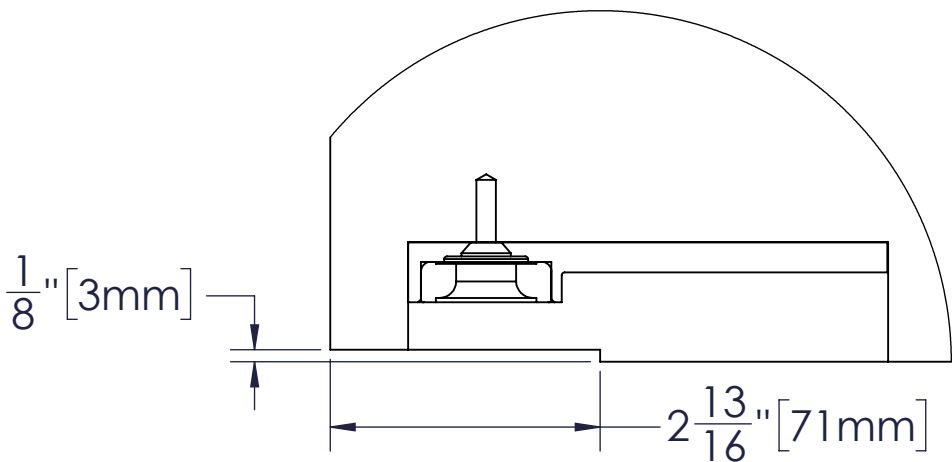
RIXSON
ASSA ABLOY

TEMPLATE NUMBER:
OC70202

DATE:
07/2021



MAX. DEGREE OF OPENING
W73 NON HOLD OPEN (95°)
W73 NON HOLD OPEN WITH TRACK STOP (95°)
W73 HOLD OPEN (95°)



DETAIL A
SCALE 1 : 2

- NOTES:
- 1. 1/8" DOOR TO SOFFIT CLEARANCE REQUIRED.
 - 2. REINFORCING PER ANSI/SDI-100 RECOMMENDED FOR HOLLOW METAL DOORS.
 - 3. AUXILIARY STOP RECOMMENDED.
 - 4. DO NOT SCALE DRAWING



TRADEMARK
HARDWARE

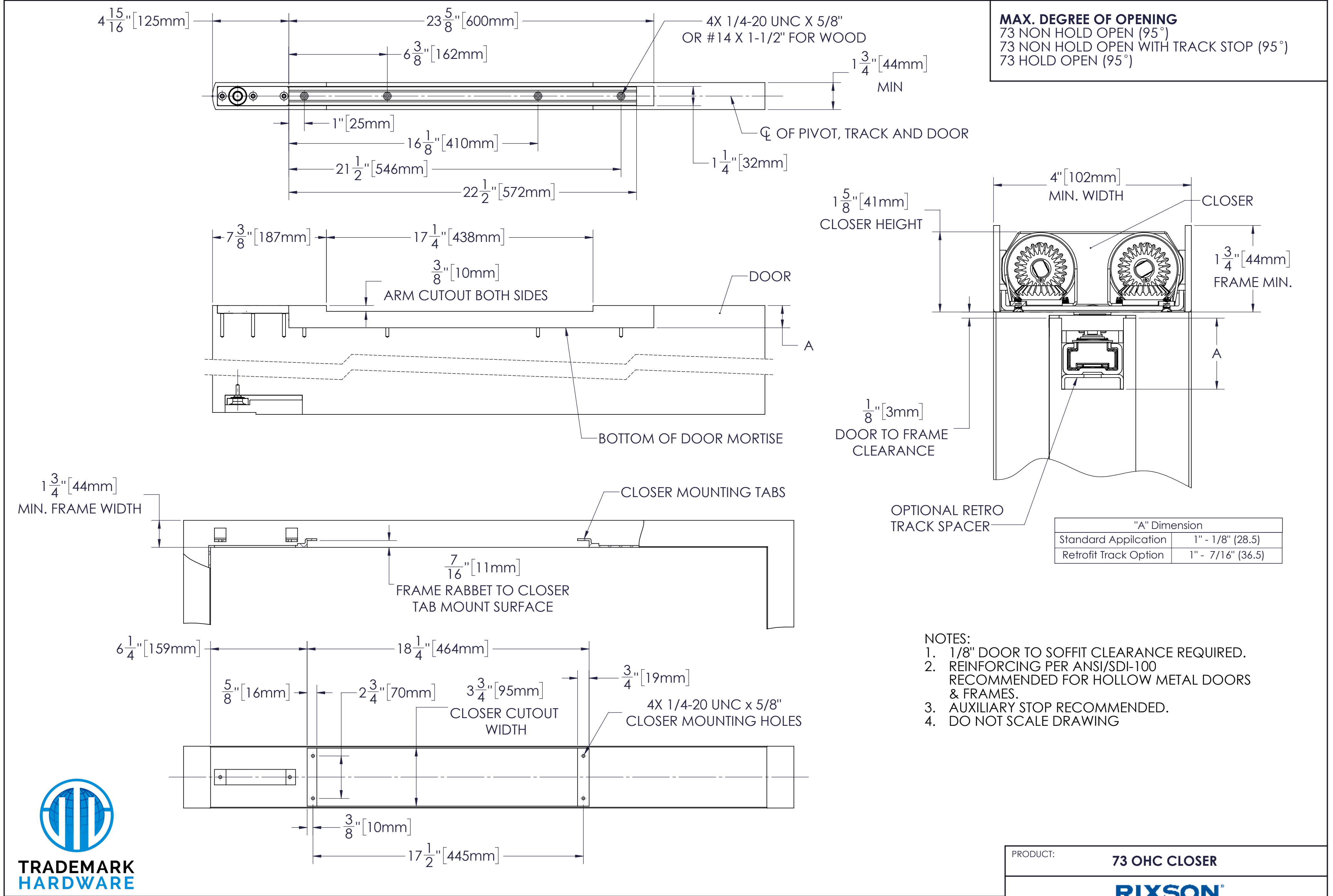
**MODEL W73 OVERHEAD CONCEALED CLOSER
AND CENTER PIVOT, WOOD FRAME**

PRODUCT: **W73 OHC CLOSER**

RIXSON
ASSA ABLOY

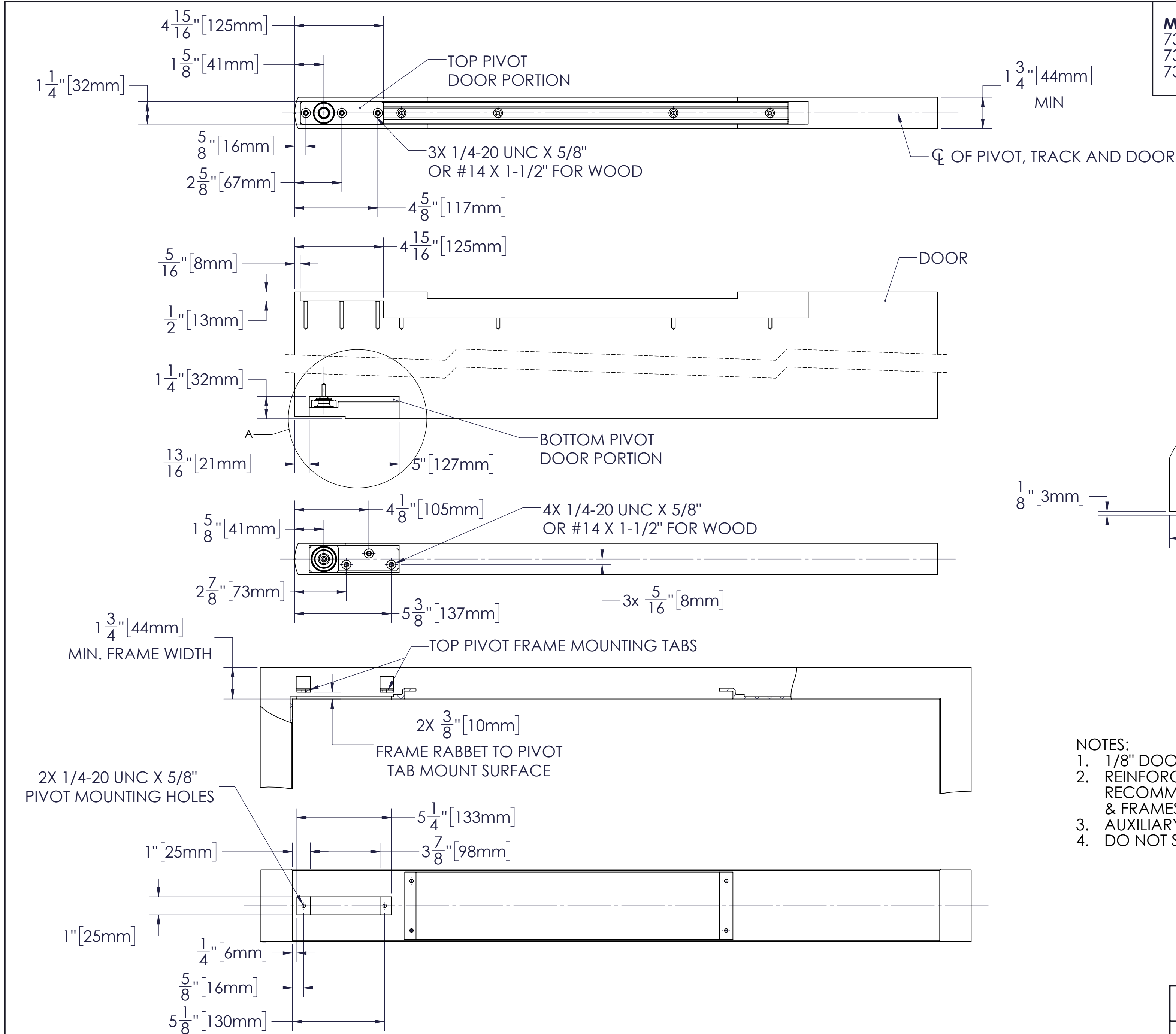
TEMPLATE NUMBER:
OC70202

DATE:
07/2021

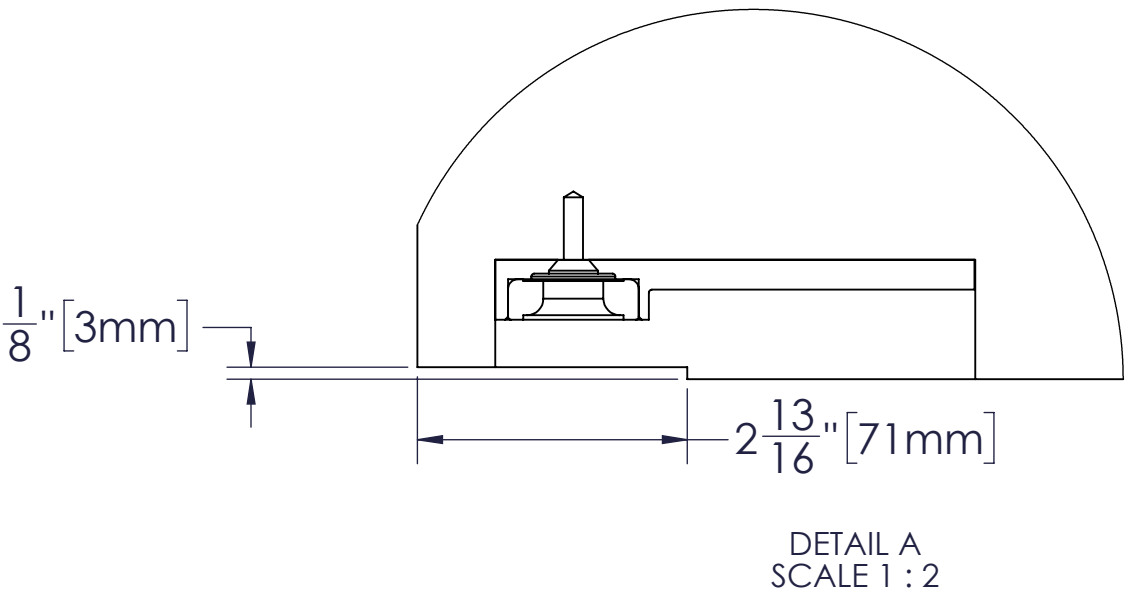


MODEL 73 OVERHEAD CONCEALED CLOSER
AND CENTER PIVOT, METAL FRAME

PRODUCT:	73 OHC CLOSER	
	RIXSON ASSA ABLOY	
TEMPLATE NUMBER:	OC70201	DATE: 07/2021



MAX. DEGREE OF OPENING
73 NON HOLD OPEN (95°)
73 NON HOLD OPEN WITH TRACK STOP (95°)
73 HOLD OPEN (95°)



- NOTES:
1. 1/8" DOOR TO SOFFIT CLEARANCE REQUIRED.
 2. REINFORCING PER ANSI/SDI-100 RECOMMENDED FOR HOLLOW METAL DOORS & FRAMES.
 3. AUXILIARY STOP RECOMMENDED.
 4. DO NOT SCALE DRAWING



**MODEL 73 OVERHEAD CONCEALED CLOSER
AND CENTER PIVOT, METAL FRAME**

PRODUCT: 73 OHC CLOSER	
RIXSON ASSA ABLOY	
TEMPLATE NUMBER: OC70201	DATE: 07/2021