

M19, FM19, M190 and FM190

Intermediate Pivot

3/4" Offset, Handed

Installation Instructions

**NORTON
RIXSON**

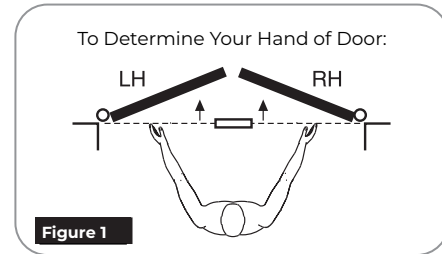
ASSA ABLOY

WARNING

This product can expose you to lead which is known to the state of California to cause cancer and birth defects or other reproductive harm. For more information go to www.P65warnings.ca.gov.

Ce produit peut vous exposer au plomb qui, dans l'état de la Californie, est reconnu pour causer le cancer, des anomalies congénitales ou d'autres problèmes de reproduction. Pour plus d'informations, visitez: www.P65warnings.ca.gov.

IMPORTANT: It is responsibility of door and frame manufacturers to check hardware schedule and prepare doors and frames. The following instructions cover field prep.



1. Install intermediate pivot.

1. Determine hand of door for proper placement of intermediate pivot. (Figure 1)



NOTE:

- Door should already be hung with top pivot and bottom pivot or floor closer.
 - Doors 60" - 90" (152.4cm - 228.6cm) in height should use one Intermediate pivot; each additional 30" (76.2cm) warrants an additional Intermediate pivot.
2. Locate pivot(s) so that it is vertically in alignment with centerpoint of top pivot and bottom spindle and mark pivot leaf locations on door and frame. (Figure 2)
 3. Mortise door and frame. (Figure 3) Refer to template IP50050.
 4. Using pivot leaf as a template mark and prepare mounting holes on door and frame. (Figure 3)
 5. Install jamb portion of pivot in frame using five (5) 1/4-20 x 5/8" FHMS or #14 x 1-1/2" FHWS screws provided.
 6. Install door portion of pivot in door using five (5) 1/4-20 x 5/8" FHMS or #14 x 1-1/2" FHWS screws provided.

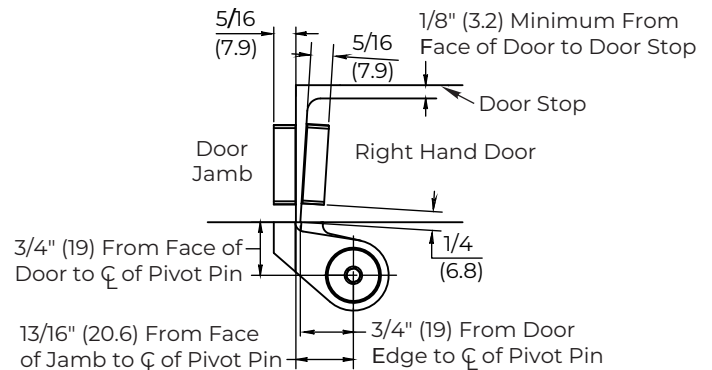


Figure 2

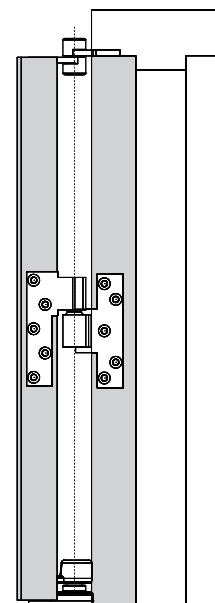


Figure 3

2. To adjust door height:

1. Remove arm cap and loosen locking screw of bottom pivot. (Figure 6)
2. Remove hex cap from bottom of intermediate pivot. (Figure 5)
3. Turn stud screw clockwise to raise the door to desired height. (Figure 5)
4. Using shims furnished with bottom arm, fill gap between arm and bottom pivot floor portion. (Figure 6)
5. Turn stud screw counter clockwise until door rests on shims. (Figure 5)
6. Tighten locking screw of bottom pivot. (Figure 6)
- NOTE:** Open and close door several times. Make shim adjustments until door swings freely.
7. Re-tighten locking screw and replace arm cap. (Figure 6)
8. Replace hex cap of intermediate pivot. (Figure 5)

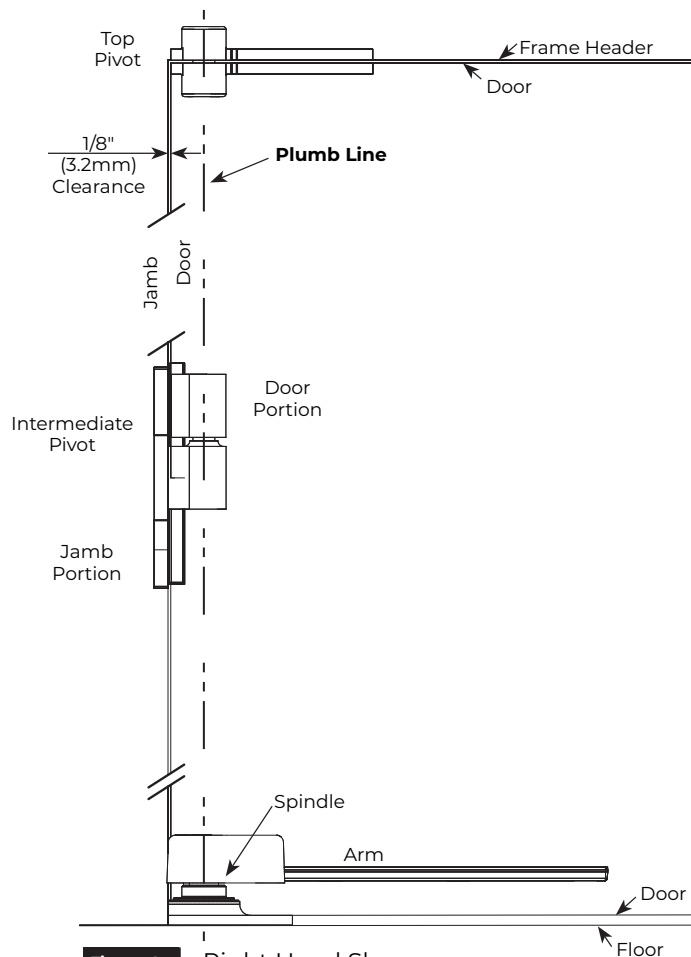


Figure 4 Right Hand Shown

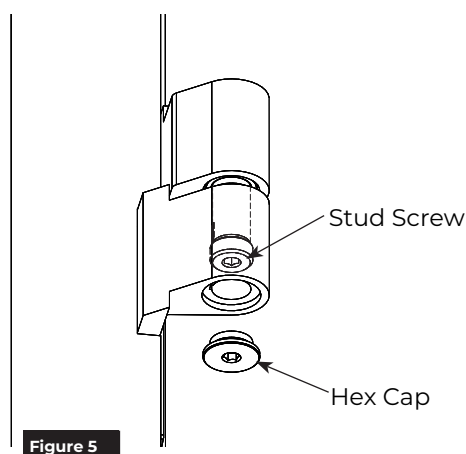


Figure 5

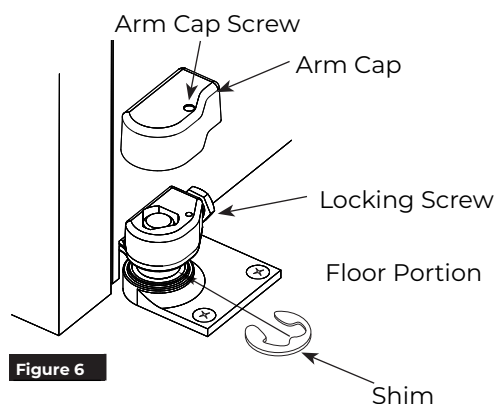
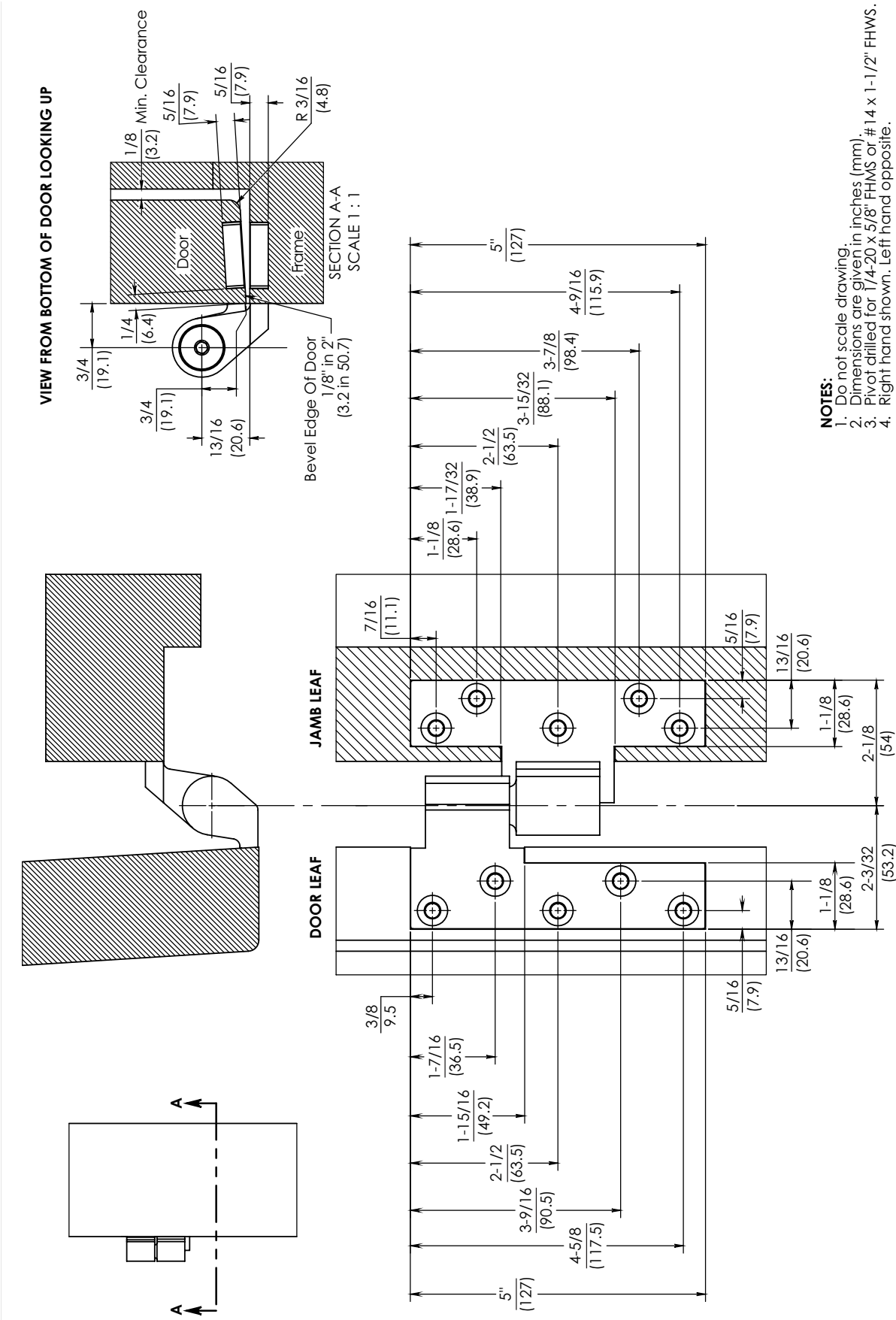


Figure 6

M19, FM19, M190 and FM190 Intermediate Pivot Template IP50050



The ASSA ABLOY Group is the global leader in access solutions. Every day we help people feel safe, secure and experience a more open world.



Technical Product Support:
Monroe, NC 28112 USA
Phone: 877.974.2255 ext: 2
Techsupport.NortonRixson@assaabloy.com
NortonRixson.com

Norton Rixson is a brand associated with ASSA ABLOY Accessories and Door Controls Group, Inc., an ASSA ABLOY Group company. Copyright © 2006, 2009, 2022, ASSA ABLOY Accessories and Door Controls Group, Inc. All rights reserved. Reproduction in whole or in part without the express written permission of ASSA ABLOY Accessories and Door Controls Group, Inc. is prohibited.

Approved 2022-05-23

IS-M19 Rev 4 05/22