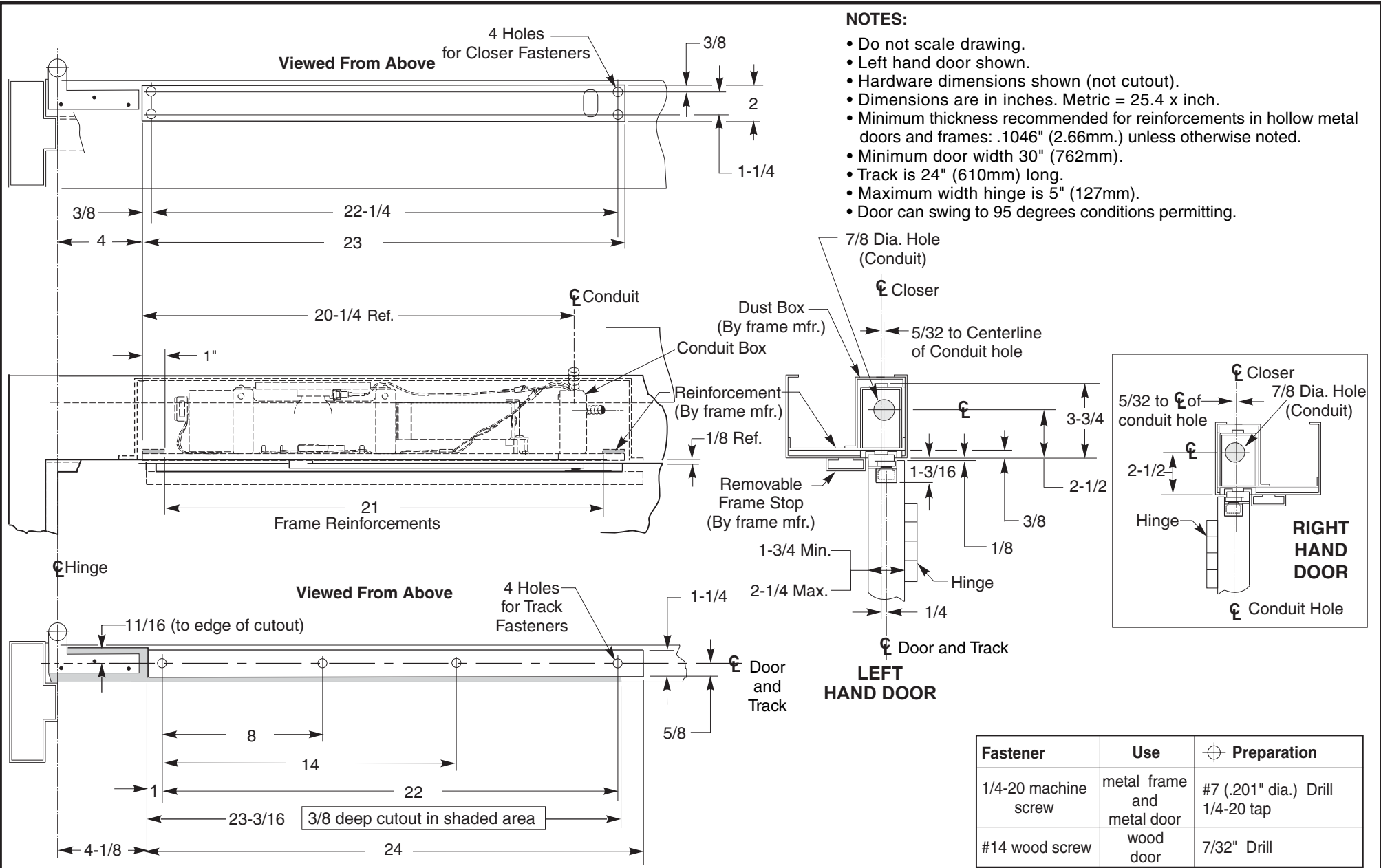



Fastener	Use	⊕ Preparation
1/4-20 machine screw	metal frame and metal door	#7 (.201" dia.) Drill 1/4-20 tap
#14 wood screw	wood door	7/32" Drill



**7290MPS Series Combination Door Closer-Holder and Releasing Device**  
**Overhead Concealed with Rigid Slide Arm**  
**With Offset Mounting in Hollow Metal Frame**  
**For Use on Doors Hung on 3/4" Offset Pivots**



**ASSA ABLOY**

TEMPLATE NUMBER  
**7372-1292**

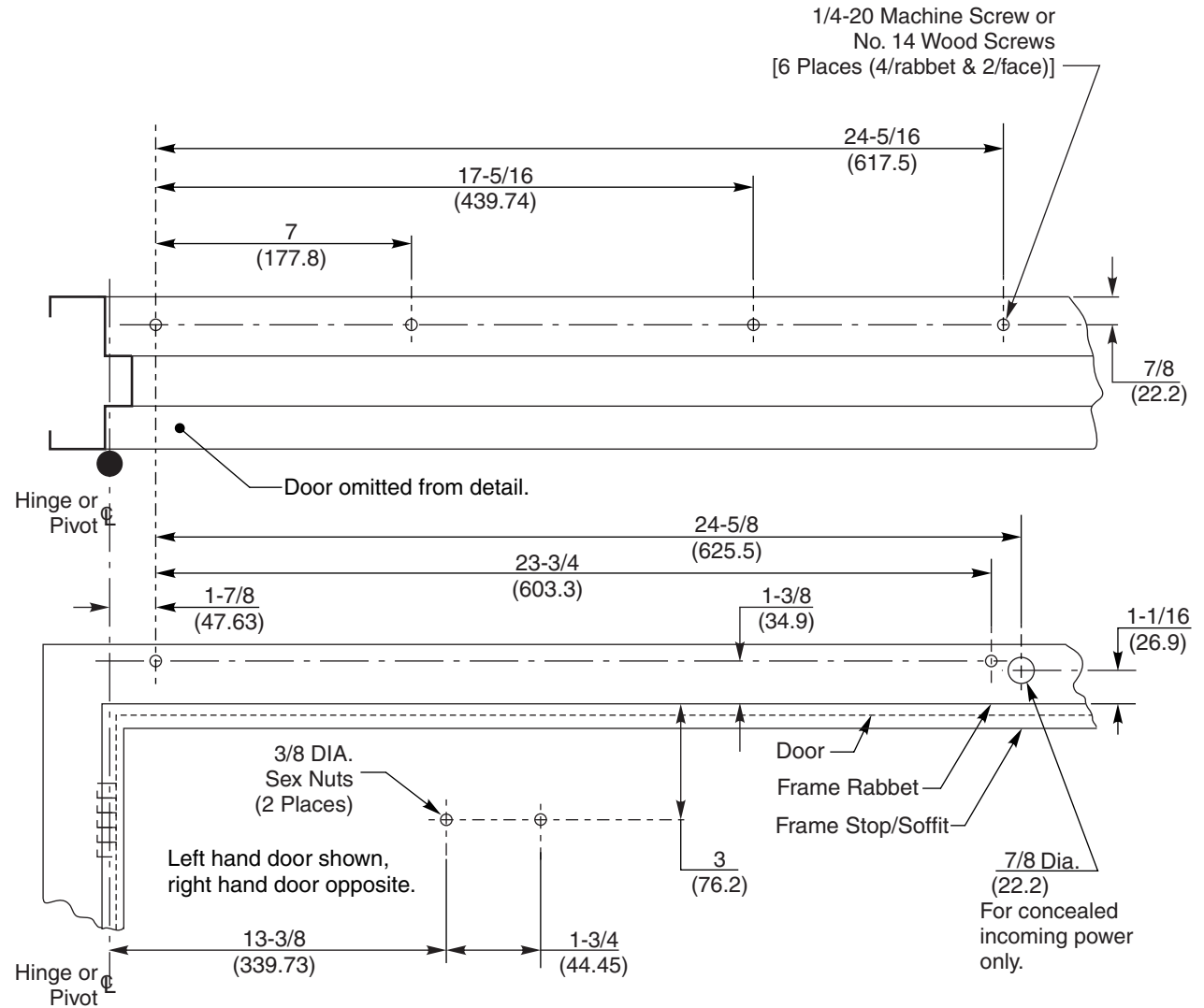
REV  
**3**

DATE  
**02/22**

**Notes:**

- Do not scale drawing.
- Left hand door shown. Same dimensions apply for right hand door, measured from centerline of hinge or pivot.
- Template information based upon use of **4-1/2"** hinges or **3/4"** offset pivots.
- Dimensions are shown in inches and millimeters (mm).
- Hollow metal doors require channel or box-type reinforcement when thru-bolt mount is specified.
- Sex-nuts are required for wood or plastic faced fire-door installations.
- Minimum thickness recommended for reinforcements in hollow metal doors and frames is .1046 (2.66) unless noted otherwise.
- Minimum ceiling clearance for closer unit is 2" (50.8).
- Maximum hinge side frame reveal is 7" (180).

Preparation for Fasteners			
	Fasteners	Door or Frame	Drill-Sizes
Standard	1/4" - 20 machine screw	Metal	Drill: #7 (0.201" dia.) Tap: 1/4" - 20
	Sleeve nuts and bolts	Hollow Metal	9/32" (7 mm) through; 3/8" (9.5 mm) door face opposite to closer
		Aluminum or Wood	3/8" (9.5 mm) through
Optional	Through-bolts and grommet-nuts	All	9/32" (7 mm); 3/8" (9.5 mm) dia. x 3/8" (9.5 mm) deep on door opposite to closer



Model	Degree of Open	Reveal
712X SZ 722X	100° Max	2-3/4" - 7" (69.9 - 177.8)

1-877-974-2255

**Norton Series 7100SZ or 7200**  
Combination Door Closer-Holder and Releasing Device with Multi Point Selective Hold Open  
Double Lever Closer Arm Drop Application 100° Max Opening.  
Stop (Push) Side of Door Installation

**Norton**

ASSA ABLOY

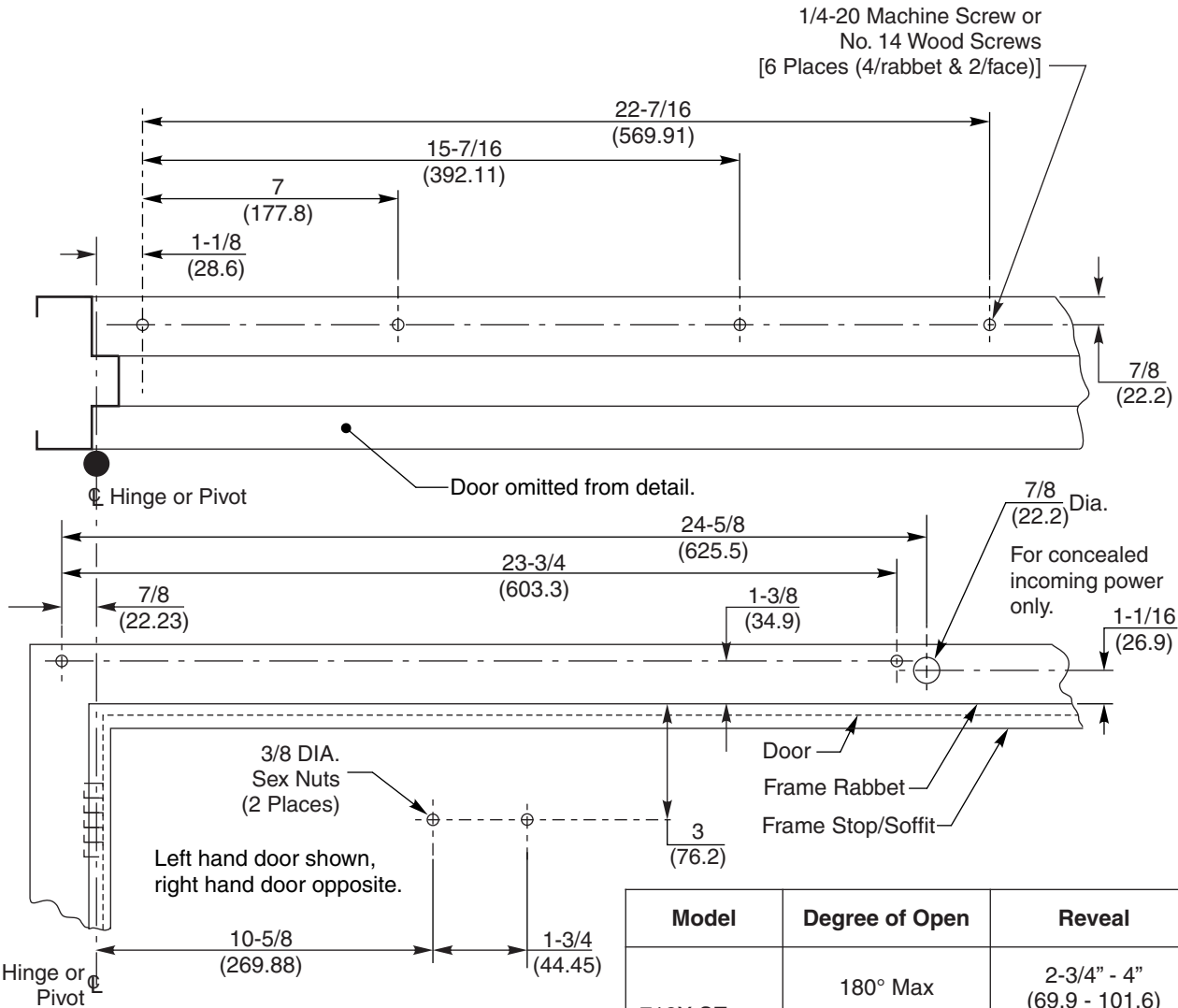
www.nortondoortcontrols.com

TEMPLATE NUMBER **7372-1371** DATE **07/12**

**Notes:**

- Do not scale drawing.
- Left hand door shown. Same dimensions apply for right hand door, measured from centerline of hinge or pivot.
- Template information based upon use of **4-1/2"** hinges or **3/4"** offset pivots.
- Dimensions are shown in inches and millimeters (mm).
- Hollow metal doors require channel or box-type reinforcement when thru-bolt mount is specified.
- Sex-nuts are required for wood or plastic faced fire-door installations.
- Minimum thickness recommended for reinforcements in hollow metal doors and frames is .1046 (2.66) unless noted otherwise.
- Minimum ceiling clearance for closer unit is 2" (50.8).
- Maximum hinge side frame reveal, *see chart lower right*.

Preparation for Fasteners			
	Fasteners	Door or Frame	Drill-Sizes
Standard	1/4" - 20 machine screw	Metal	Drill: #7 (0.201" dia.) Tap: 1/4" - 20
	Sleeve nuts and bolts	Hollow Metal	9/32" (7 mm) through; 3/8" (9.5 mm) door face opposite to closer
		Aluminum or Wood	3/8" (9.5 mm) through
Optional	Through-bolts and grommet-nuts	All	9/32" (7 mm); 3/8" (9.5 mm) dia. x 3/8" (9.5 mm) deep on door opposite to closer



Model	Degree of Open	Reveal
712X SZ 722X	180° Max	2-3/4" - 4" (69.9 - 101.6)
	165° Max	4" - 7" (101.6 - 177.8)
713X SZ 723X	180° Max	4" - 7" (101.6 - 177.8)

**Norton Series 7100SZ or 7200**

Combination Door Closer-Holder and Releasing Device with Multi Point Selective Hold Open  
Double Lever Closer Arm Drop Application; 180° Max. Opening.  
Stop (Push) Side of Door Installation

1-877-974-2255

**Norton**

ASSA ABLOY

www.nortondoortcontrols.com

TEMPLATE NUMBER

**7372-1372**

DATE

**07/12**

