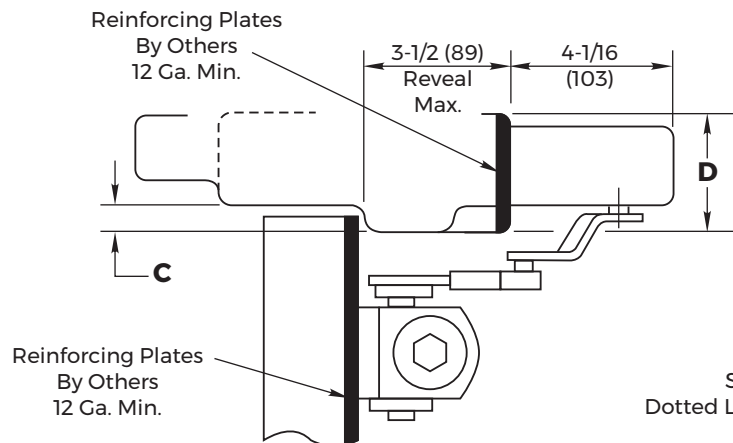


A	B
1/2 (12.7)	2-5/16 (59)
5/8 (16)	2-7/16 (62)
3/4 (19)	2-9/16 (65)



Closer Cover Dimensions  
2-3/16" x 13" x 2-1/8" Projection  
(55.5) x (330) x (54)

<b>C</b>	<b>D</b>
1/2 (12.7)	2-1/2 (63.5)
5/8 (16)	2-5/8 (67)
3/4 (19)	2-3/4 (70)

Solid Line Represents Double Egress Frame  
Dotted Line Represents Standard Double Rabbeted Frame

**Smok-Chek V Without Detector  
FM-0601K Series  
Push Side Mounting  
85° Thru Maximum Degree Hold Open**

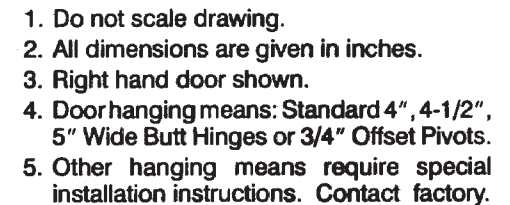
~~Approved 2023-12-15~~



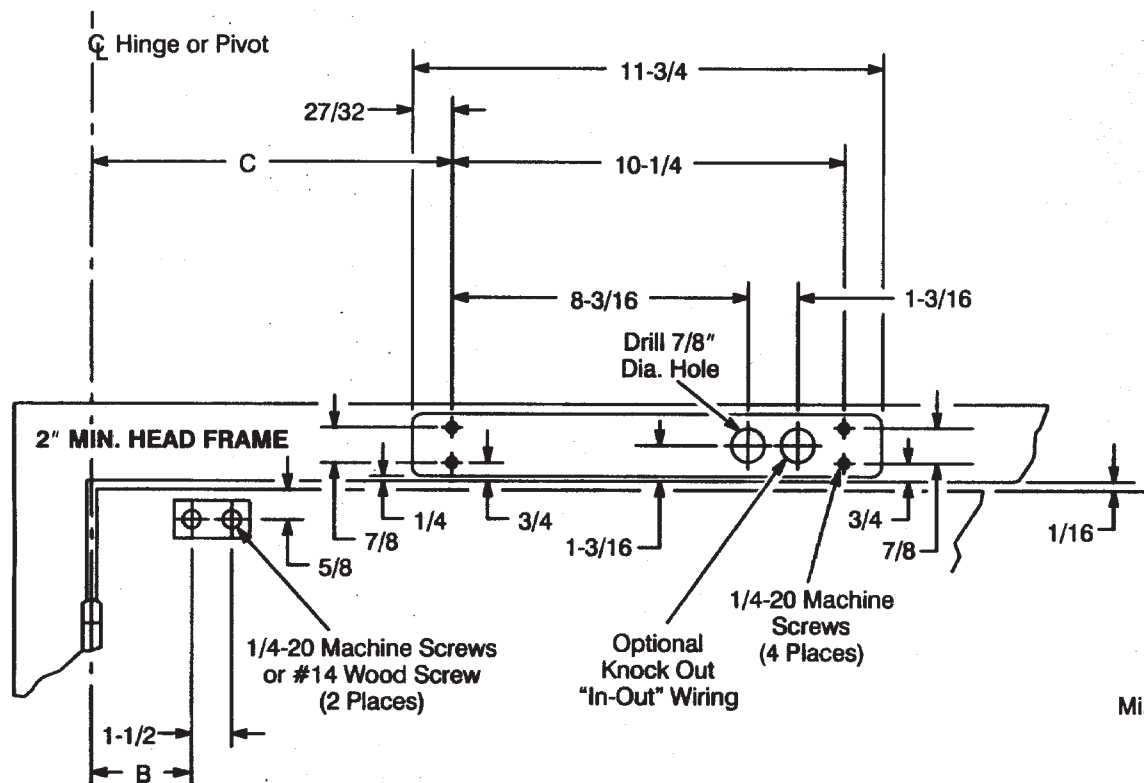
## ASSA ABLOY

TEMPLATE NUMBER	REV	DATE
SC90130	3	12/23

**3/8" Dia. Drill (Order Special #5467 for 1-3/4" Door)**



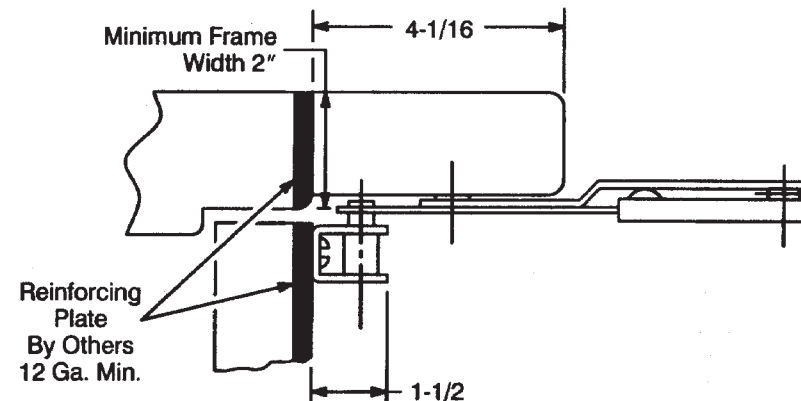
01/22



Determine Hold Open Degree and  
 Select "B" and "C" Dimensions Below

H.O. RANGE	B	C
85° – 135°	8-1/8	11-1/2
130° – 180°	6-1/8	9-1/4

**CAUTION:** Do not exceed 135° in  
 85° – 135°. Range "B" and "C"  
 taken from centerline of butts or  
 pivots.



**Notes:**

1. Do not scale drawing.
2. All dimensions are given in inches.
3. Right hand door shown.
4. Door hanging means: Butt Hinges, Swing Clear Hinges, or 3/4" Offset Pivots.
5. Other hanging means require special installation instructions. Contact factory.
6. Select proper closer template for independent closer mounting.

**Smok-Chek V Without Detector  
 FM-0100**

**Pull Side Mounting for Independent Closer Mounting  
 85° Thru Maximum Degree Hold Open**

**NORTON  
 RIXSON**

**ASSA ABLOY**

TEMPLATE NUMBER

**SC90100**

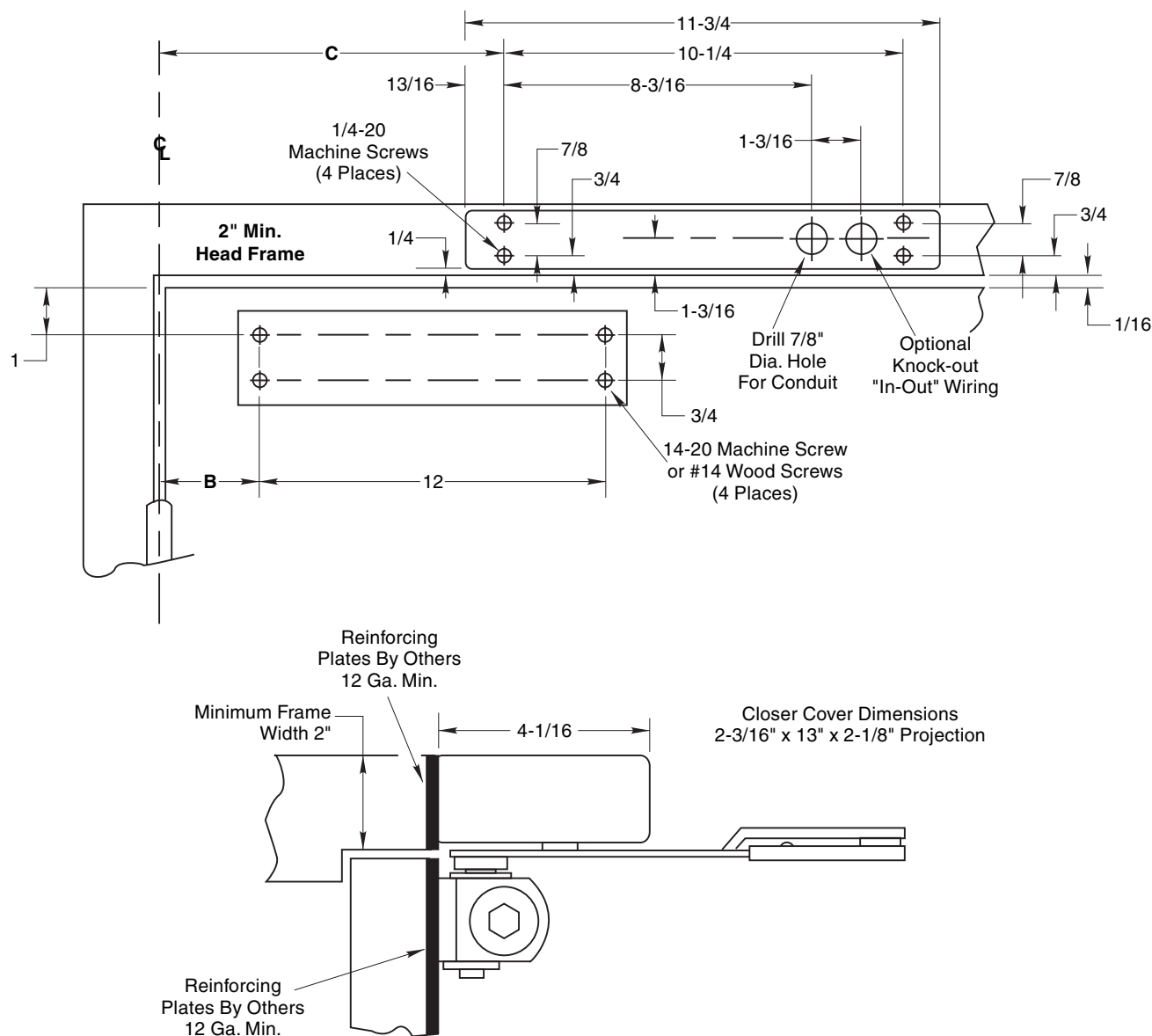
REV

**3**

DATE

**01/22**

Approved 2023-12-15



**Notes:**

1. Do not scale drawing.
2. All dimensions given in inches.
3. Right hand door shown.
4. Door hanging means: Standard 4", 4-1/2", 5" Butt or Swing Clear Hinges or 3/4" Offset Pivots.
5. Other hanging means require special installation instructions. Contact factory.
6. For 90° Hold Open – 3-3/8" clearance required between pull side of door and wall.

Swing Clear – 135° Max.

Butt Size (W)	Maximum Opening	
	Flush	1/8" Reveal
4-1/2	150°	145°
5	170°	165°
6	180°	175°

Determine Hold Open Degree and  
Select "B" and "C" Dimensions Below

H. O. Range	B	C
85° – 135°	4-1/2	11-1/2
130° – 180°	2-1/2	9-1/4

**CAUTION:** Do not exceed 135° in 85° – 135° range "B" and "C" taken from centerline of butts or pivots.

**Smok-Chek V Without Detector  
FM-0600 Series  
Pull Side Mounting  
85° Thru Maximum Degree Hold Open**

~~Approved 2023-12-15~~



**ASSA ABLOY**

TEMPLATE NUMBER

**SC90120**

REV

3

DATE \_\_\_\_\_

01/22