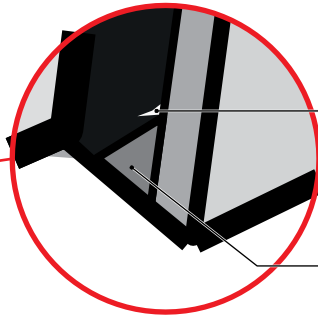
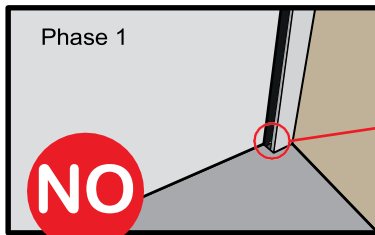


DRAWING NR. 7

HOW TO CORRECTLY RE-SET CLICK SEALS AFTER HAVING POSITIONED THE PANEL

AFTER HAVING INSERTED
THE PANEL



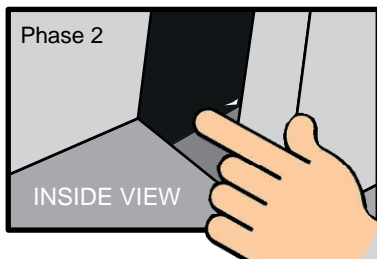
Possible crease in the
seals to be avoided

Sealant strip with isosceles
triangle cross-section shape with 8
mm sides

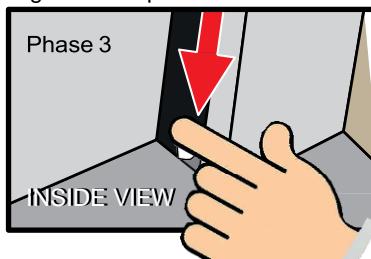
PAY ATTENTION!

After having positioned the panel, the joint plugs between the horizontal and vertical seals do not match the surfaces or show a natural crease - these are defects to be eliminated following these steps

From the side to be
protected

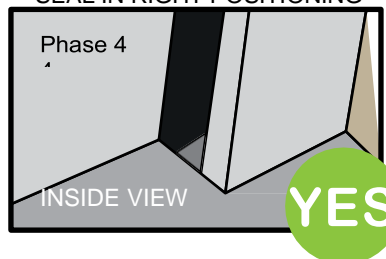


Slightly press the seal cap towards the floodable area.



While holding the cap towards the floodable area, also press it down until it comes into contact with the underside, then release it.

SEAL IN RIGHT POSITIONING

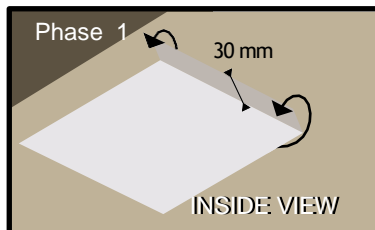


Check that the seal fits perfectly with all surfaces and that there is no crease
Caution! This must be achieved on both sides.

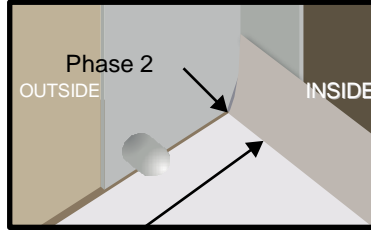
IMPORTANT NOTE:

If any element inside and adjacent to the L-profiles impedes the chance to carry the previous steps, please follow the instructions below

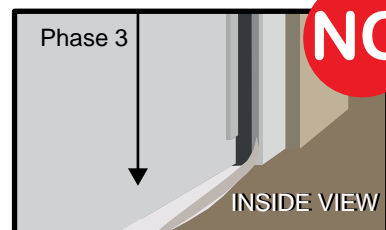
From the outside of the ambience to be
protected



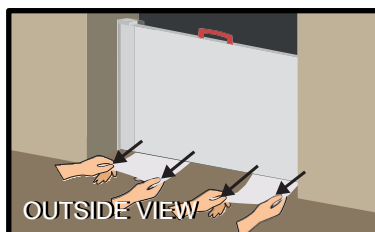
Take a sheet of paper or nylon with a maximum thickness of 1 mm for each profile, fold it in an L-shape for 30 mm, upwards and approximately 80°.



From the outside, match the corner of the sheet in the outside corner of the sealant layer in the shape of an isosceles triangle with 8 mm sides, existing at the foot of the L-shaped seal profile in the 26 mm



Position the panel by inserting it at the least possible angle and fit it into the mechanisms.



Pull steadily, gently and horizontally each sheet from the floodable side until it has come out completely



Check that the seals fit perfectly with all surfaces and on both sides, if necessary repeat the operations until achieving a perfect result.