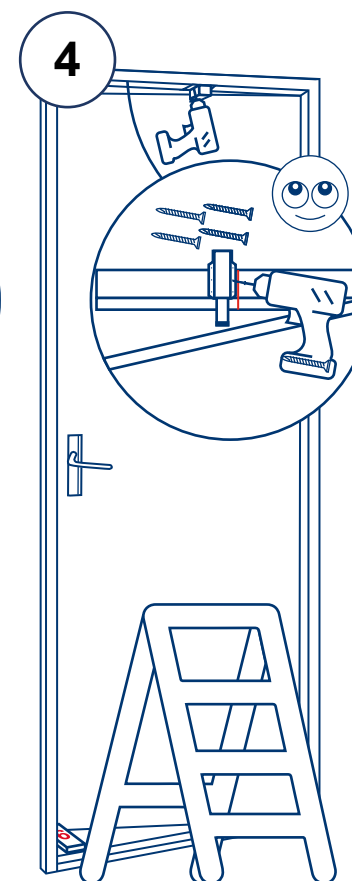
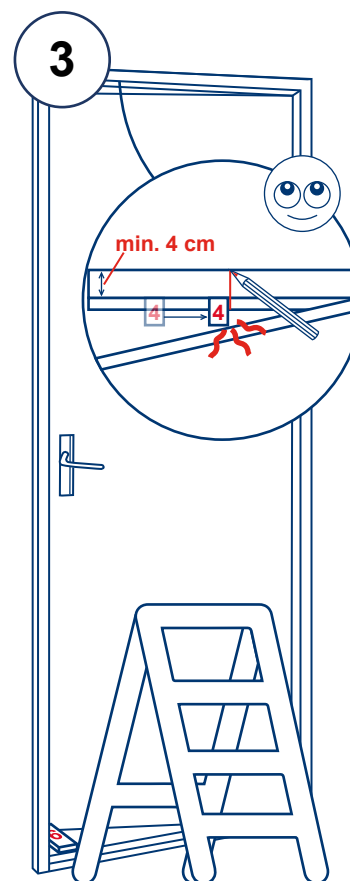
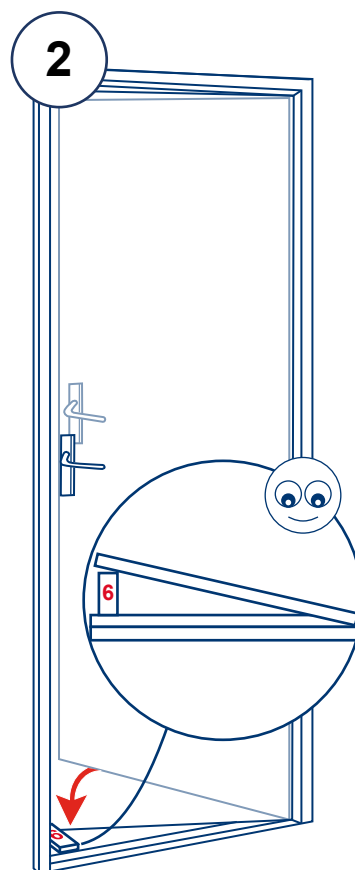
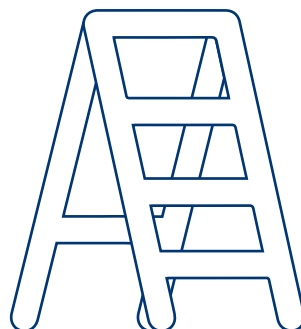
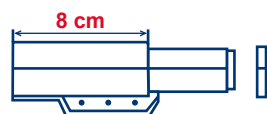
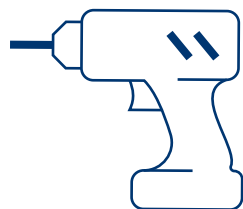


4 screws 39 x 16 mm  
aluminium door frames



4 screws 40 x 19 mm  
wooden door frames



Use the right screws  
for your door post

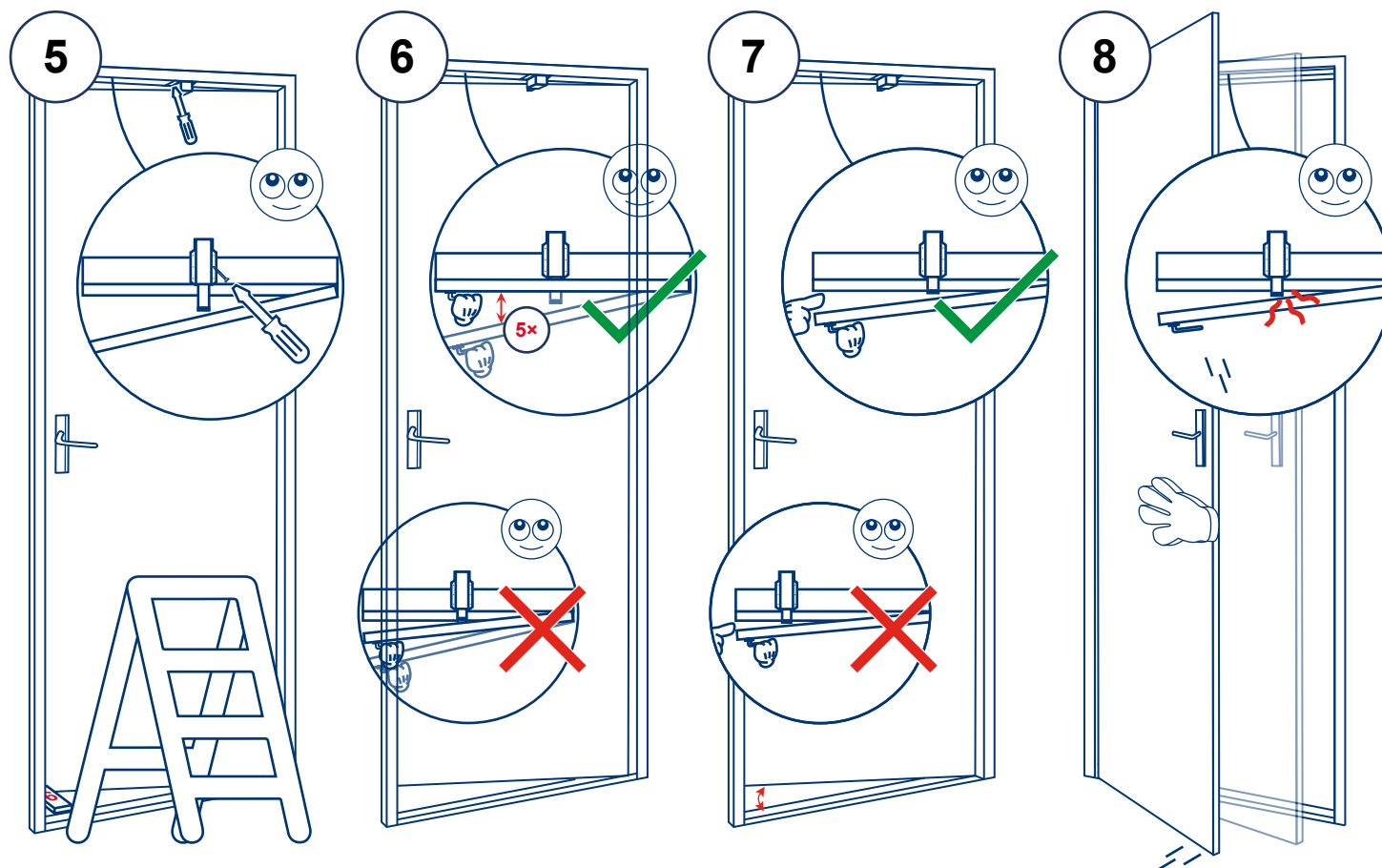


Door post should have a  
minimum thickness of 4 cm  
There has to be at least 8 cm of  
free space from a closed door at  
the top side of the door frame



Put device on the top  
of the door frame only





Spray WD40 on the pin and into the stopper, repeat once every 3 months



Step 7, 8 and 9 are to test the installation



Ensure that the product does not interfere with shutting the door