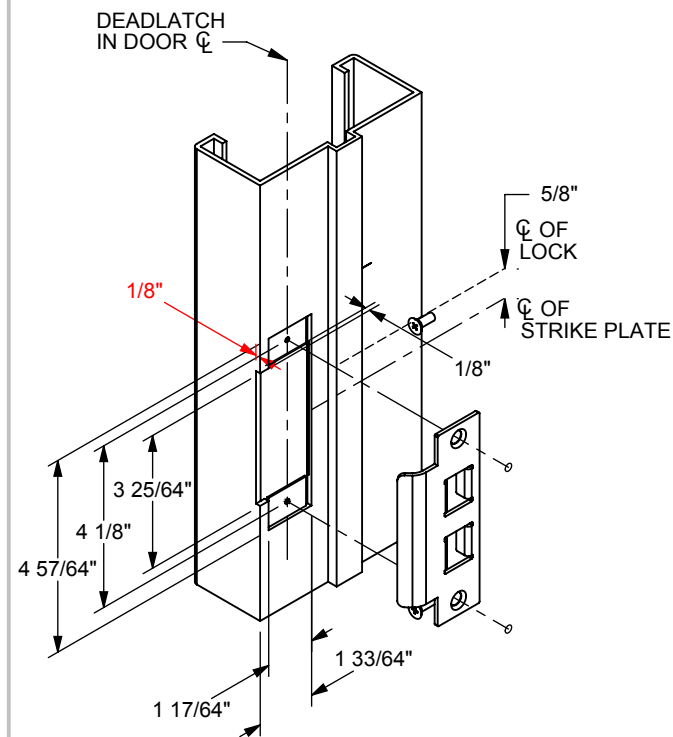


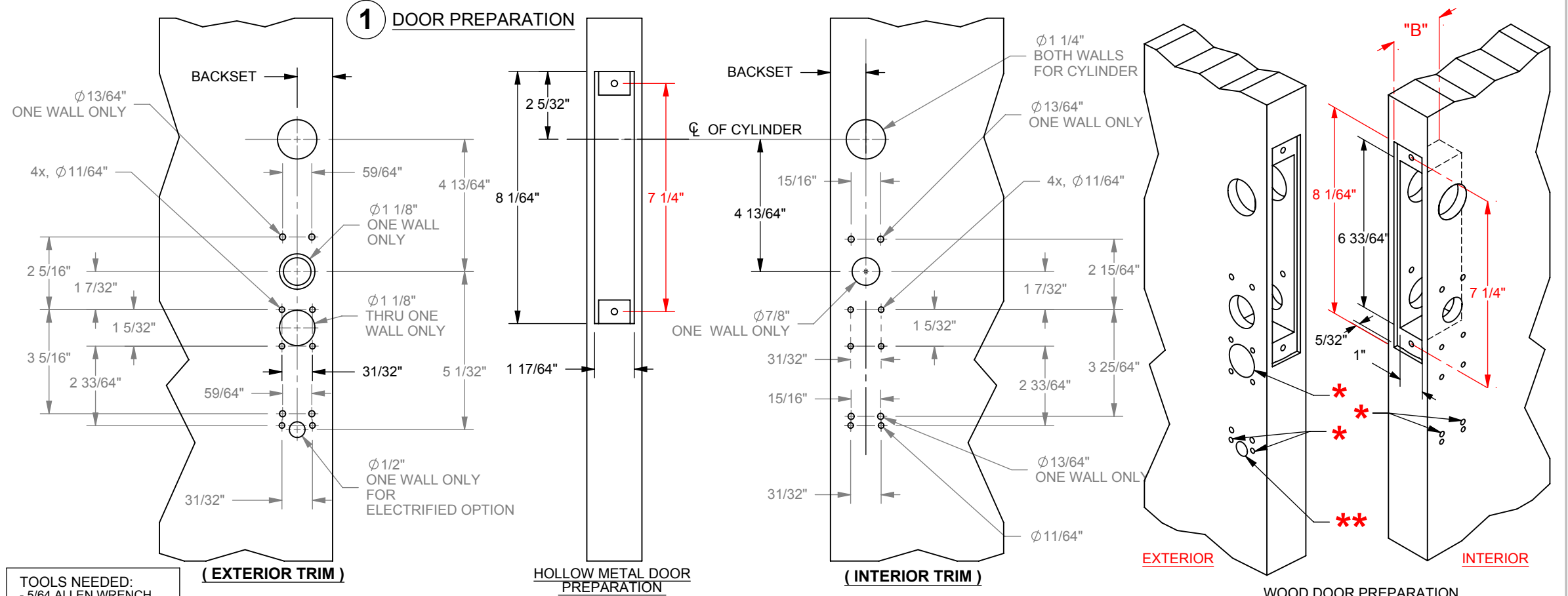
STRIKE PREPARATION HOLLOW METAL FRAME



INSTALLATION OF STRIKE

MOUNT STRIKE ONTO JAMB AND FASTEN WITH #10 FLAT HEAD SCREWS AS SHOWN.

1 DOOR PREPARATION



TOOLS NEEDED:
 - 5/64 ALLEN WRENCH
 - 3/32 ALLEN WRENCH
 - 1/8 ALLEN WRENCH
 - #9 DRILL BIT (.196 Ø)
 - #16 DRILL BIT (.177 Ø)
 - 7/8 DRILL BIT (.875 Ø)
 - 1-1/8 DRILL BIT (1.125 Ø)

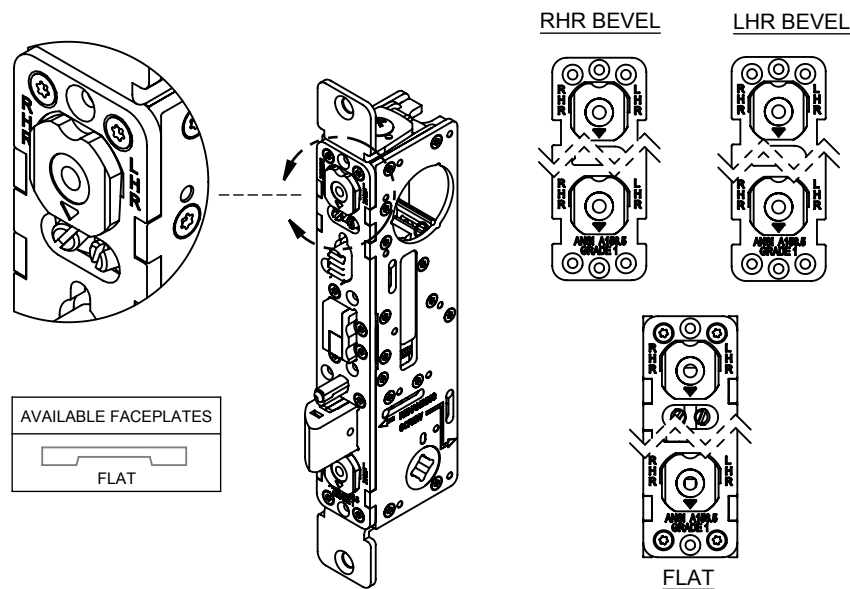
- APPLY STICK ON TEMPLATE OVER CYLINDER BACKSET CENTER LINE.
 NOTE: EACH TEMPLATE IS LABELED FOR OUTSIDE OR INSIDE TRIM.
 - CENTER PUNCH ALL HOLES.
 - DRILL HOLES AT CENTER PUNCH LOCATIONS. REMOVE TEMPLATE.
 - INSTALL 2290 PER INSTALLATION INSTRUCTIONS.

WOOD DOOR PREPARATION

BACKSET	"B" DIM.
1-1/8"	1.80
1-1/2"	2.17

2 BEVEL TABS ADJUSTMENT

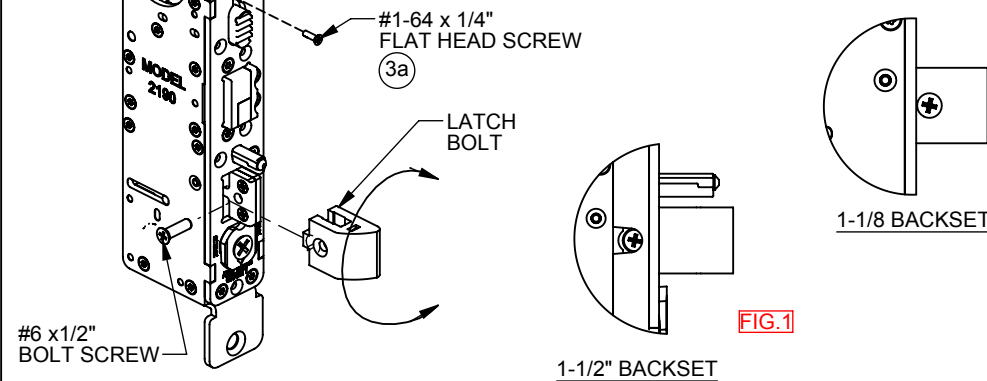
- ROTATE BEVEL TABS TO DESIRED HANDING. USING THE BEVEL ADJUSTMENT ALLOWS THE FLAT FACEPLATE TO WORK IN BEVEL STILES



3

TO CHANGE THE HANDING ON LATCH BOLT:

- DEPRESS THE LATCHBOLT UNTIL BOLT SCREW CAN BE SEEN THROUGH CASE HOLE. (1-1/2" BACKSET ONLY).
- REMOVE BOLT SCREW AND ORIENT LATCH BOLT TO THE OPPOSITE HAND.
- DEPRESS THE LATCH BOLT UNTIL THE COUNTERSINK HOLE ON THE LATCH BOLT CAN BE SEEN THROUGH THE CASE HOLE AS SHOWN IN FIG.1.
- REINSERT BOLT SCREW AND TIGHTEN TO 22 - 27 IN-LB.



- YOU WILL ALSO HAVE TO RE-ORIENT THE INTER-CONNECT CAM:

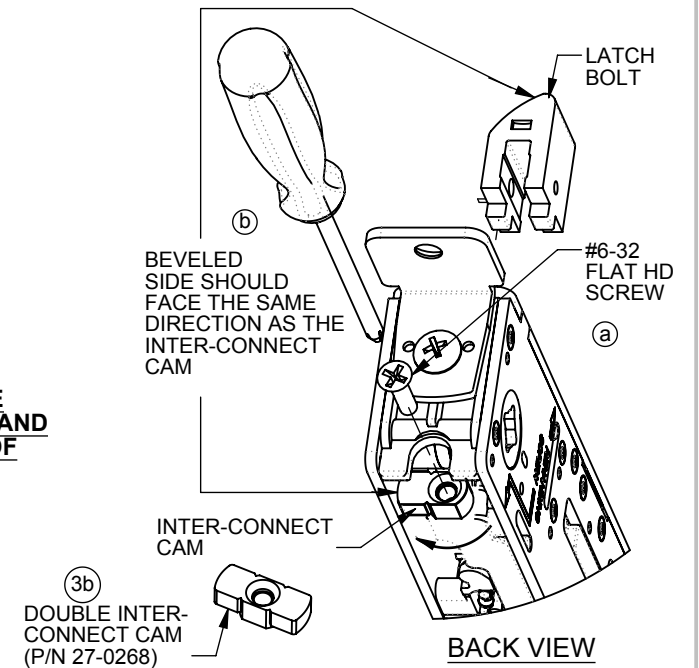
- LOOSEN THE #6-32 FLAT HD SCREW AT THE BOTTOM OF THE LOCK.
- ROTATE THE INTER-CONNECT CAM TO THE OPPOSITE SIDE AND RETIGHTEN THE FLAT HEAD SCREW TO COMPLETE THE OPERATION

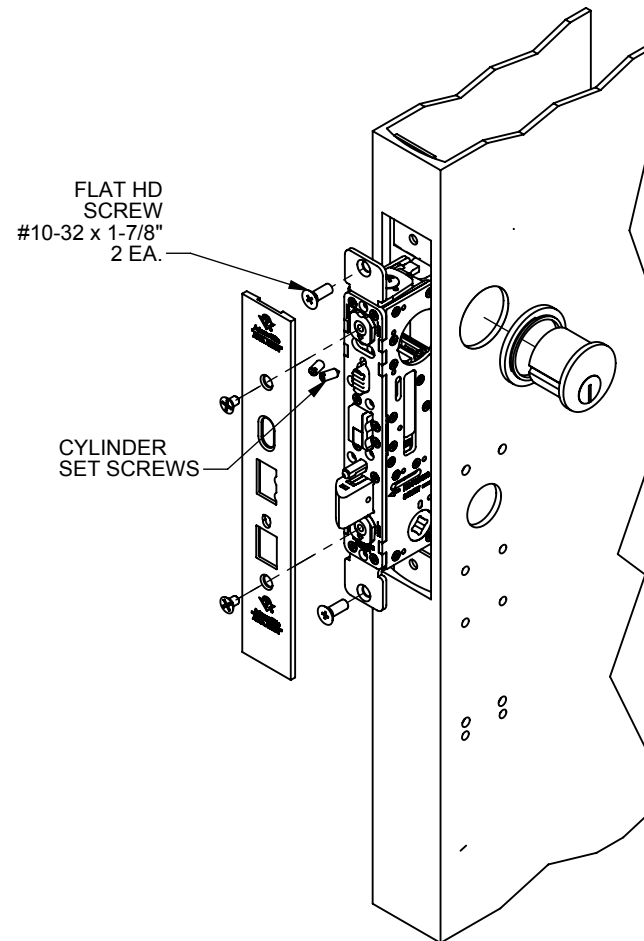
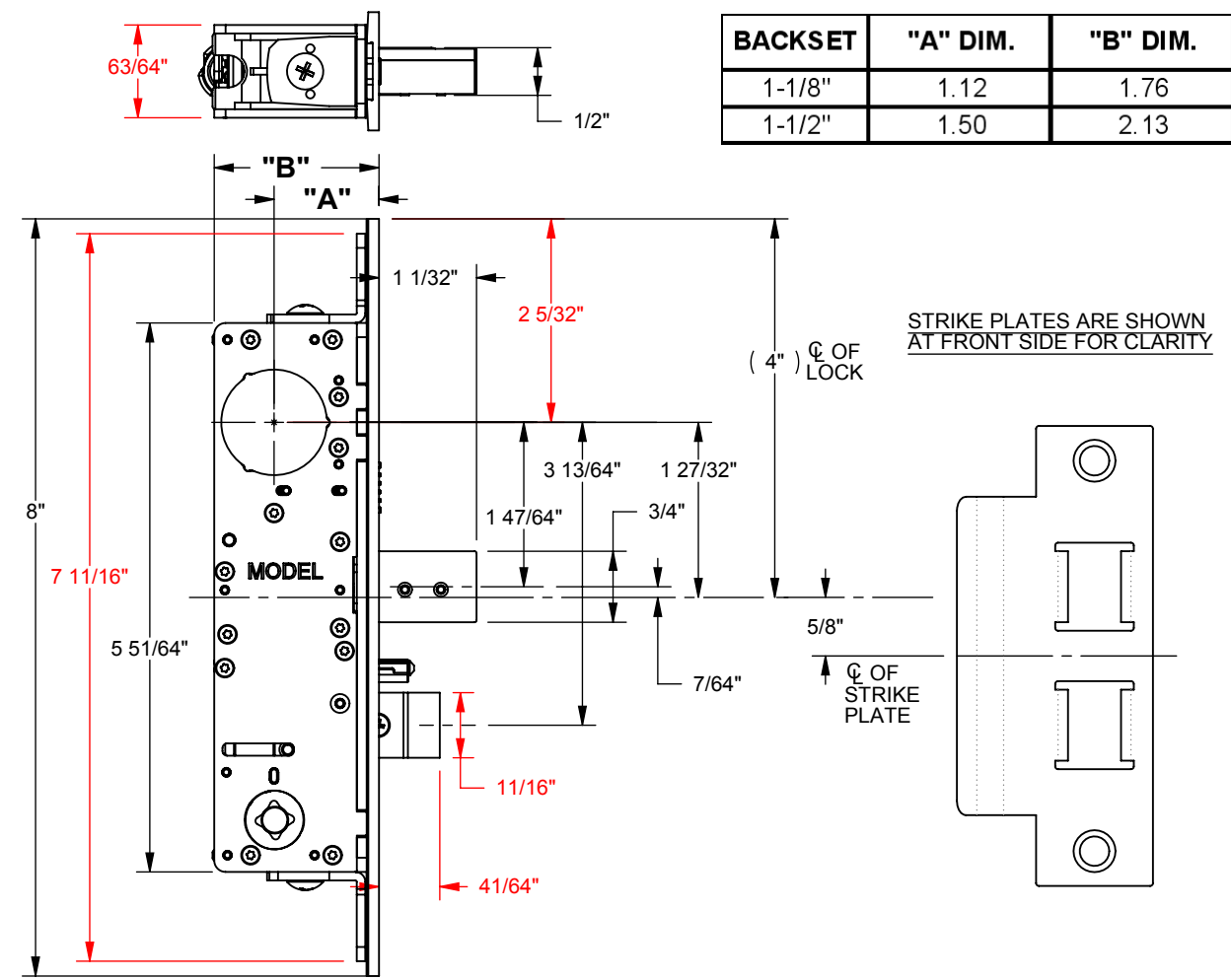
3a TO BLOCK HOLDBACK FEATURE

- INSERT #1-64 x 1/4" FLAT HEAD SCREW INTO CASE AS SHOWN BEFORE INSTALLING IN DOOR.

3b FOR APPLICATION THAT REQUIRE RETRACTION OF THE DEADBOLT AND DEADLATCH FROM BOTH SIDES OF DOOR.

- REMOVE THE INTER-CONNECT CAM, AND INSTALL THE OPTIONAL DOUBLE INTER-CONNECT CAM.





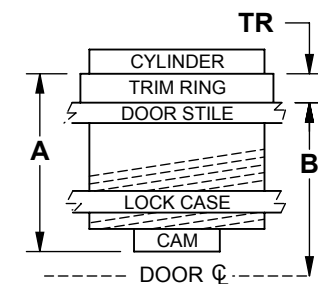
INSTALLING LOCK TO THE BACK OF THE DOOR

- 4 - INSERT LOCK ASSEMBLY INTO DOOR THRU CUTOUT.
- INSTALL AND FASTEN TWO (2) FLAT HEAD SCREWS #10-32 x 1-7/8" (OR #12, WOOD SCREW, P/N# 29-0271) TO SECURE THE LOCK ASSEMBLY ON DOOR.
- 5 - INSTALL CYLINDER AND SECURE WITH SET SCREWS.
- INSTALL FACE PLATE.

$$TR^* = A - B$$

* TOLERANCE: $\pm .060$

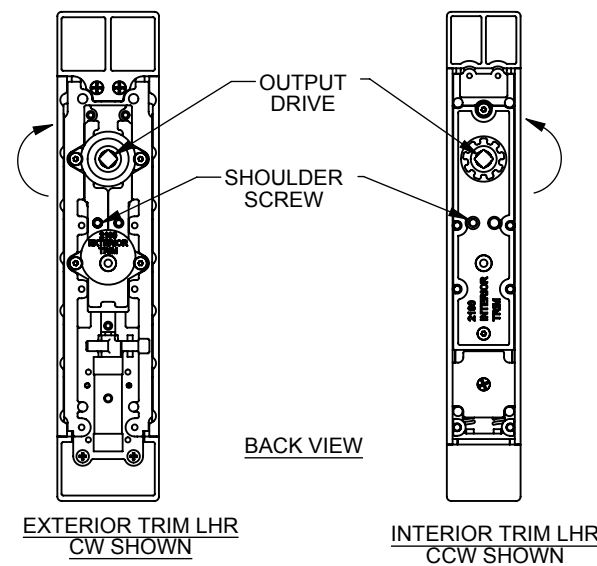
"TR" is trim ring length
"A" is cylinder height (less shoulder but including cam)
"B" is one-half of door thickness



6 HANDING CONFIGURATION FOR 2290 TRIM

- THE OUTPUT DRIVE FOR THE EXTERIOR TRIM IS SHIPPED FROM THE FACTORY IN A CLOCKWISE ROTATION AND THE INTERIOR TRIM IS SHIPPED WITH A COUNTER-CLOCKWISE ROTATION. TO CHANGE THE OUTPUT DRIVE ROTATION, FOLLOW THESE STEPS:
1. REMOVE THE SHOULDER SCREW WITH A 5/64" ALLEN WRENCH.
 2. REINSTALL SHOULDER SCREW ON THE OPPOSITE SIDE.

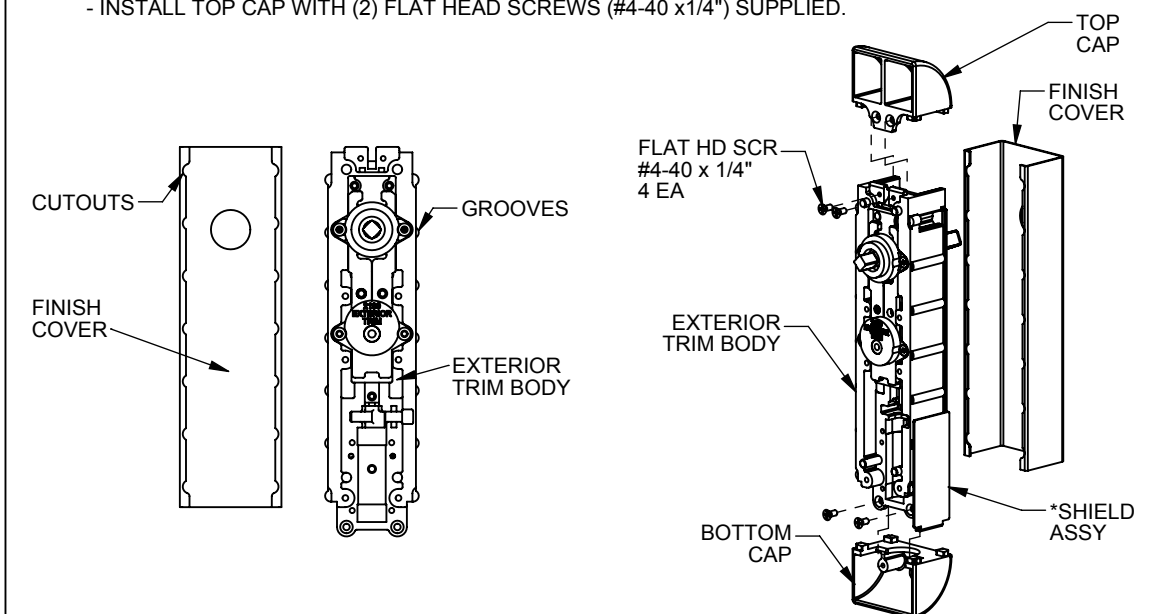
REFER TO THE CHART BELOW FOR REHANDING THE TRIM AS NEEDED.



TRIM	HANDING -RHR	HANDING - LHR
	SPINDLE ROTATION	
EXTERIOR	COUNTER-CLOCKWISE	CLOCKWISE
INTERIOR	CLOCKWISE	COUNTER-CLOCKWISE

7 ASSEMBLE EXTERIOR TRIM

- SLIDE THE FINISH COVER ONTO BODY. THE COVER HAS CUTOUTS THAT FIT OVER THE GROOVES ON THE BODY.
- INSTALL BOTTOM CAP WITH (2) FLAT HEAD SCREWS (#4-40 x 1/4") SUPPLIED.
- * FOR EXTERIOR TRIM WITH ELECTRIFIED OPTION. INSERT THE SHIELD ASSY BETWEEN THE COVER AND THE EXTERIOR BODY BEFORE INSTALLING THE BOTTOM CAP.
- INSTALL TOP CAP WITH (2) FLAT HEAD SCREWS (#4-40 x 1/4") SUPPLIED.



WWW.TMHARDWARE.COM