

Architectural Door Accessories

ASSA ABLOY
Opening Solutions

Pemko Door Top Solutions



**TRADEMARK
HARDWARE**
WWW.TMHARDWARE.COM

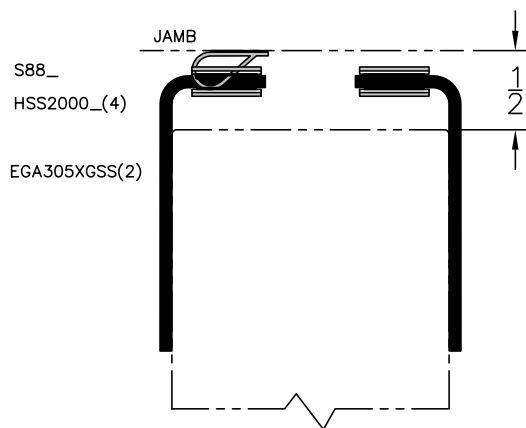
Experience a safer
and more open world

Applies to the following product:

EGA305XGSS

Installation Instructions:

1. Measure, mark, and trim door top angle on each side of door.
NOTE: Hole pattern is slightly off-center to ensure screws are placed properly.
2. Drill pilot holes in door at marks for each piece (both sides of the door).
NOTE: For wood doors, fasteners should be drilled into the door's top rail.
3. Install HSS2000 onto small leg of angle (as shown).
4. Mount each piece to door with supplied fasteners.

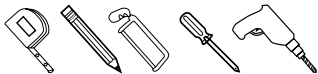


Testing/Ratings:

Excessive clearance solutions for door and frame clearances when installed per the manufacturer's instructions, intended for use with UL Classified steel composite, hollow metal doors, wood and plastic-covered composite core doors with UL Listed fire door frames up to 1-1/2 hour.



Tools Required:



ASSA ABLOY Opening Solutions
Architectural Door Accessories
orders.pemko@assaabloy.com
www.assaabloydooraccessories.us

Memphis, TN USA
P: 800.824.3018
F: 800.243.3656

Ventura, CA USA
P: 800.283.9988
F: 800.283.4050

Vaughan, ON CA
P: 800.461.3007
F: 800.461.8989