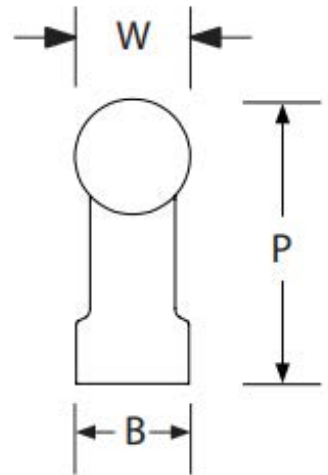
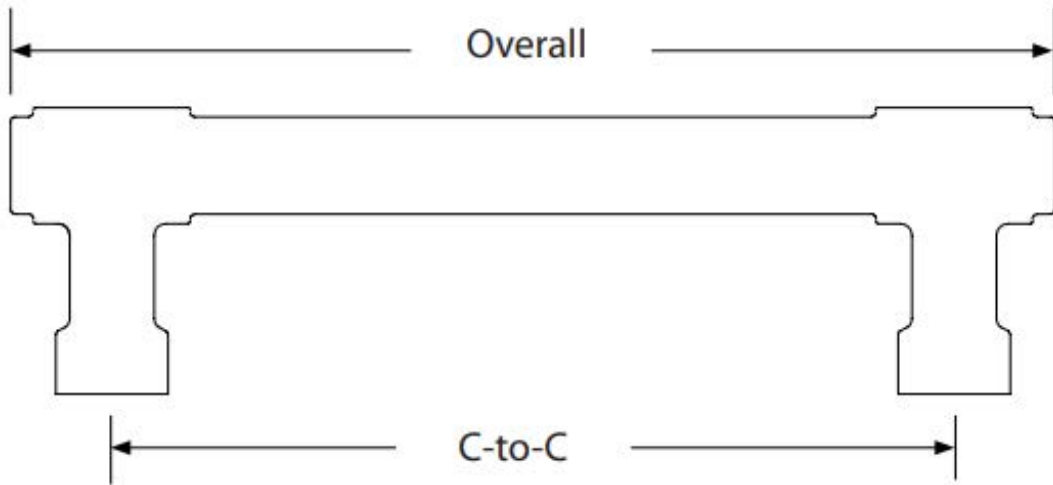




**TRADEMARK
HARDWARE**

WORLD OF QUALITY HARDWARE

PRODUCT SPECS



Jasper Pulls

Product Code	C-to-C	Overall	Projection (P)	Width (W)	Base (B)
86686	3 1/2"	4 3/8"	1 3/8"	1/2"	1/2"
86687	4"	4 7/8"	1 3/8"	1/2"	1/2"
86688	5"	5 7/8"	1 3/8"	1/2"	1/2"
86689	6"	6 7/8"	1 3/8"	1/2"	1/2"
86690	8"	8 7/8"	1 3/8"	1/2"	1/2"
86691	10"	10 7/8"	1 3/8"	1/2"	1/2"
86692	12"	12 7/8"	1 3/8"	1/2"	1/2"

Emtek 86686 Jasper Pull Specs



www.tmhardware.com



845-388-1300



845-388-1388



sales@tmhardware.com