



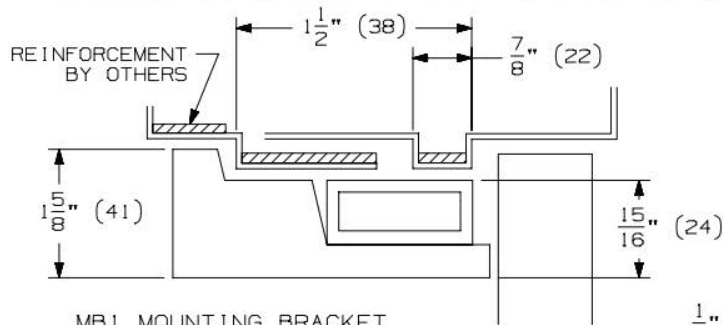
TRADEMARK HARDWARE

WORLD OF QUALITY HARDWARE

MOUNTING BRACKETS FOR STOP APPLIED HARDWARE MAY BE SUPPLIED WITH COORDINATOR. BRACKETS MUST BE FIELD PREPARED FOR STOP APPLIED HARDWARE. LOWER MOUNTING HOLES FOR DOOR APPLIED HARDWARE $\frac{1}{16}$ " TO CLEAR COORDINATOR AND MOUNTING BRACKET.

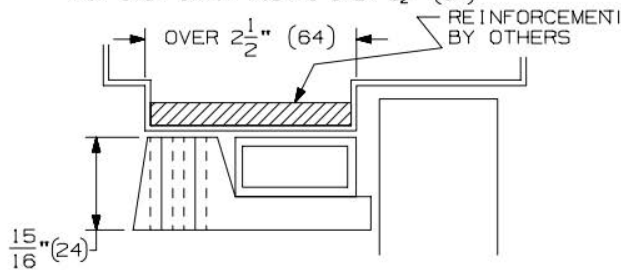
NOTE: DO NOT DRILL HOLES IN THE COORDINATOR. THIS WILL CAUSE DAMAGE TO THE UNIT AND THE COORDINATOR WILL NOT FUNCTION CORRECTLY.

MB2 MOUNTING BRACKET FOR STRIP WIDTH UP TO $2\frac{1}{2}$ "



MB1 MOUNTING BRACKET

FOR STOP STRIP WIDTHS OVER $2\frac{1}{2}$ " (64)



	QTY	SCREW DETAILS
COORDINATOR	6	12-24 X $1\frac{1}{4}$ " TRPHMS
FILLER BAR	2	BUSHINGS
	2	12-24 X $1\frac{1}{4}$ " TRPHMS
RUB PLATE	4	8 X $\frac{3}{4}$ " FPHSMS
CARRY BAR	3	12-24 X $1\frac{1}{4}$ " TRPHMS
	3	$\phi \frac{5}{16}$ " SEX BOLT
MB1 OR MB2	4	12-24 X $1\frac{1}{4}$ " TRPHMS

NOTE: FOR MB1F, MB2F, MB3F, MB1V, MB2V OR MB3V, SEE SEPARATE INSTRUCTIONS.

NOTE: DIMENSIONS IN () ARE MILLIMETERS.

