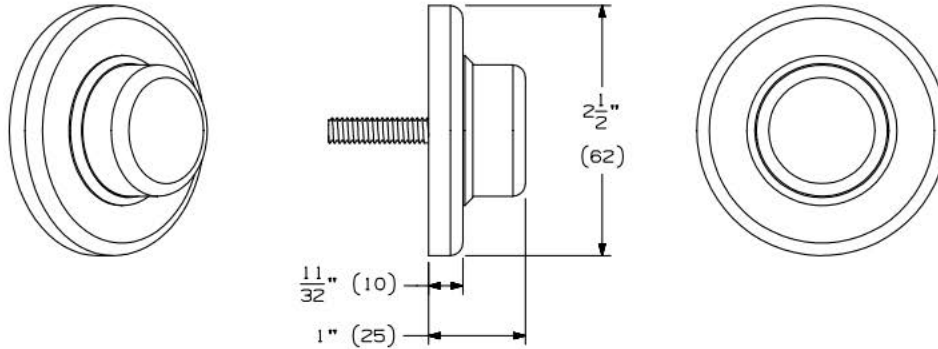




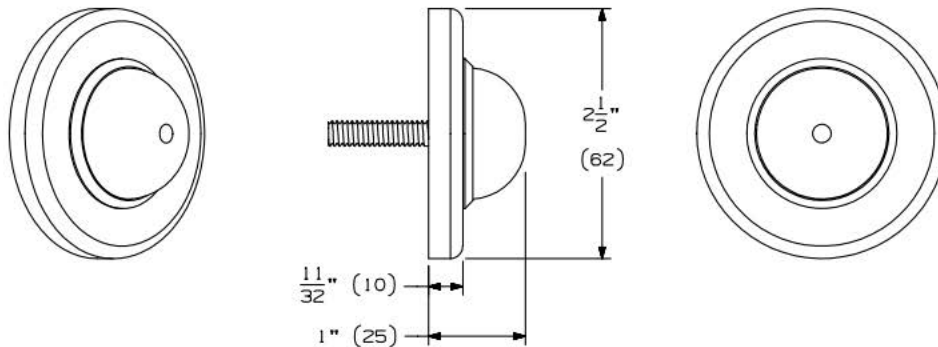
# TRADEMARK HARDWARE

WORLD OF QUALITY HARDWARE

WS401CCV & WS402CCV



WS401CVX & WS402CVX



#### INSTRUCTIONS FOR WS401:

1. PLACE BUMPER ON WALL AND LOCATE THE MOUNTING HOLE.
2. DRILL A  $\frac{1}{4}$ " (6) DIAMETER HOLE.
3. INSERT PLASTIC ANCHOR IN HOLE.
4. USING A #2 PHILLIPS SCREWDRIVER, MOISTEN TIP OF SCREWDRIVER.
5. FORCE SCREWDRIVER THRU SMALL HOLE IN CENTER OF RUBBER TO GET TO HEAD OF SCREWDRIVER.
6. ALLOW BUMPER TO ROTATE AS SCREW IS TIGHTENED.

#### INSTRUCTIONS FOR WS402:

1. PLACE BUMPER ON WALL AND LOCATE THE MOUNTING HOLE.
2. DRILL A  $\frac{5}{16}$ " (8) DIAMETER HOLE.
3. INSERT DRY WALL ANCHOR IN HOLE.
4. USING A #2 PHILLIPS SCREWDRIVER, MOISTEN TIP OF SCREWDRIVER.
5. FORCE SCREWDRIVER THRU SMALL HOLE IN CENTER OF RUBBER TO GET TO HEAD OF SCREWDRIVER.
6. ALLOW BUMPER TO ROTATE AS SCREW IS TIGHTENED.

	QTY	SCREW DETAILS
WS401	1	#10 X 1" FPHSMS
	1	#10 PLASTIC ANCHOR
WS402	1	#8 X 1 1/4" OPHWS
	1	DRY WALL ANCHOR

