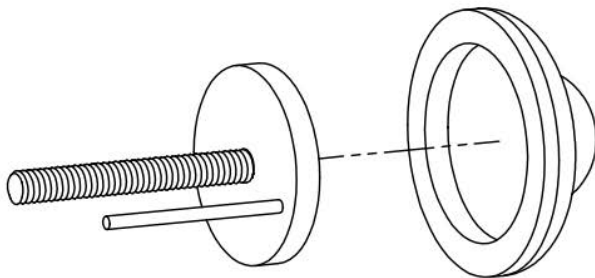
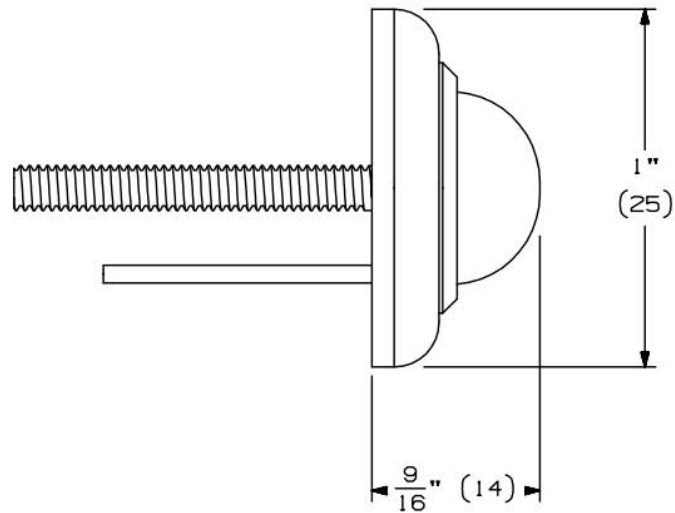




**TRADEMARK  
HARDWARE**

WORLD OF QUALITY HARDWARE



**INSTRUCTIONS:**

1. PLACE BUMPER ON WALL AND LOCATE THE MOUNTING HOLE.
2. DRILL A  $\frac{1}{4}$ " (6) DIAMETER HOLE.
3. INSERT PLASTIC ANCHOR IN HOLE.
4. HAMMER PIN IN.
5. SCREW BODY WITH RUBBER ON TO BACK PLATE.

