

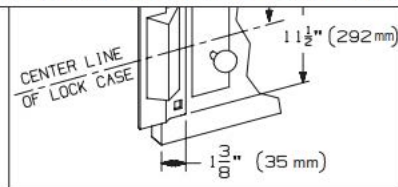


TRADEMARK HARDWARE

WORLD OF QUALITY HARDWARE

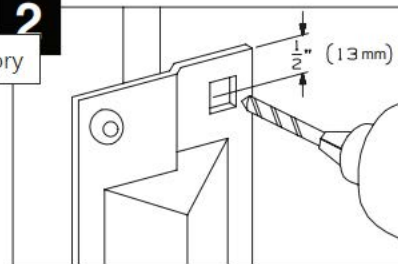
1

Click to go back (Alt+Left arrow), hold to see history



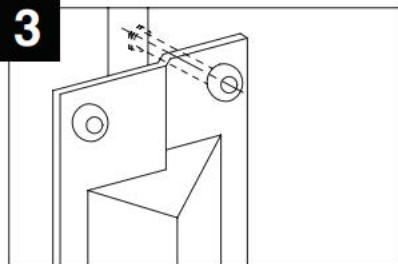
Locate lock guard as shown, making sure to center with the lock case.

2



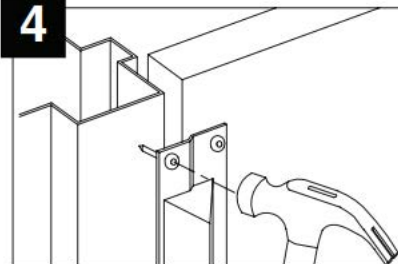
While holding lock guard firmly against door, drill two 5/16" (8mm) diameter mounting holes.

3



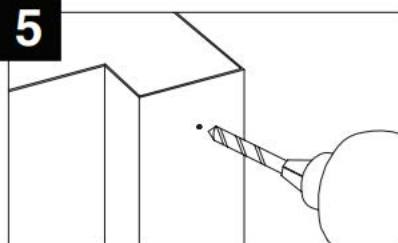
Fasten to door using two supplied carriage bolts and hex nuts.

4



Swing door closed until security pin touches the frame. Mark hole location by hitting head of security pin with hammer.

5



Drill 5/16" (8mm) hole in the frame to accept security pin.

Notes:

1. The dimple depth is 1/2" (13mm).
2. The dimple length is 6-3/4" (171mm).

Qty	Machine Screws
2	5/16" - 18 x 2-1/4" stove bolts
2	5/16" nuts

