

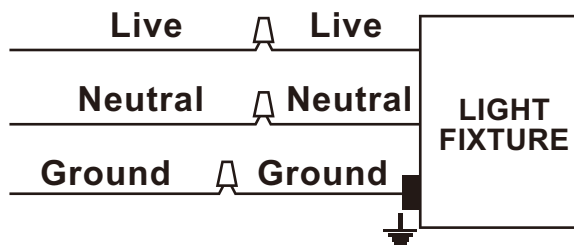
6" Surface Mount Disk Light CCT Selectable INSTALLATION INSTRUCTIONS

Read instructions carefully before installing. Keep these instructions for future reference. Topaz fixtures must be wired in accordance with the National Electrical Code and all applicable local codes. Proper grounding is required for safety. THIS PRODUCT MUST BE INSTALLED IN ACCORDANCE WITH THE APPLICABLE INSTALLATION CODES BY A QUALIFIED ELECTRICIAN WHO IS FAMILIAR WITH THE CONSTRUCTION AND OPERATION OF THE PRODUCT AND THE HAZARDS INVOLVED.



Warnings to avoid risk of electrical shock

- Make certain electrical supply is OFF before energizing fixture.
- Make all electrical and grounded connections in accordance with local codes or the National Electrical Code. Failure to do so may result in serious personal injury.
- All wiring connections must be done by a qualified electrician and should be capped with UL approved connectors.
- To avoid risk of burn be sure fixture temperature is cool enough to touch before handling.
- While the light is on, please avoid direct eye exposure.
- Combustible materials should be kept away from fixture/lens.



6" Surface Mount Disk Light CCT Selectable

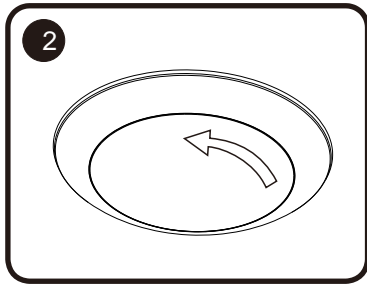
INSTALLATION INSTRUCTIONS

Installation Steps:

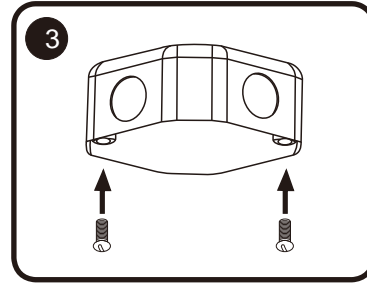
The installation accessories include two 1-1/2" 8-32 screws, two 3/4" 8-32 screws, and three wire nuts. Make sure that power supply is turned off at fuse box or circuit breaker before installation.

Step 1: Slide the switch on the back to the desired color temperature setting.

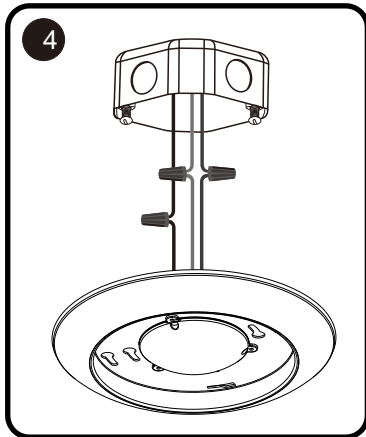
Step 2: Rotate the diffuser counter clockwise to remove the diffuser.



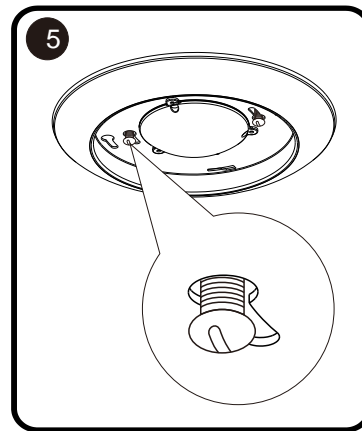
Step 3: Use 1-1/2" 8-32 or 3/4" 8-32 screws and screw them partially into 4" J-Box.



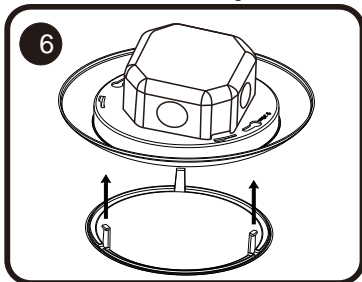
Step 4: Connect wires with wire nuts (live wire to live wire, neutral wire to neutral wire, ground wire to ground wire)



Step 5: Insert screws on J-Box into keyholes of Disk Light. Rotate Disk Light clockwise and then fasten screws.



Step 6: Place the diffuser back on Disk Light by inserting its hooks into the holes of Disk Light.



Step 7: Rotate the diffuser clockwise to secure it.

