

Item:
PL22-35WPCTS-D
PL24-50WPCTS-D



LED PANEL PCTS INSTALLATION INSTRUCTIONS

READ AND FOLLOW ALL SAFETY INSTRUCTIONS!



WARNING

- Make all electrical and ground connections in accordance with local codes or the National Electrical Code. If you are not familiar with these codes and requirements, consult a qualified electrician. This Professional should be familiar with the construction and operation of this product and hazards involved. Failure to do so may result in serious personal injury.
- To reduce the risk of fire, electric shock, personal injury, or property damage, please read and follow all safety instructions. If you do not understand these instructions or if any additional information is required, contact your local Topaz representative. Retain these instructions for maintenance reference.
- Do not exceed the allowed supply voltage marked on the luminaire label information.
- Disconnect power at the circuit breaker panel before any installation.



CAUTION

- Do not expose wire to any sharp objects such as sheet metal to prevent wiring damage or abrasion.
- While the light is on, please avoid direct eye exposure.
- Combustible material should be kept away from fixture/LENS.
- Do not make or alter any open holes in any enclosure or any electrical component during installation.
- Do not use when the enclosure is damaged or broken in any way.
- Do not alter, relocate or remove wiring, lamp holder power supply or any other electrical component.
- Pursuant to NEC 410.69, "Effective January 1, 2022, where control conductors are spliced, terminated, or connected in the same luminaire or enclosure as the branch-circuit conductors, the field-connected control conductor shall not be of a color reserved for the grounded branch circuit conductor or the equipment grounding conductor." And NEC 200.6(A)(2), "An insulated grounded conductor of 6 AWG or smaller shall be identified by one of the following means: (2) The insulated conductor shall have a continuous gray outer finish." For this reason, Topaz® will be transitioning from using Purple and Gray dimming wires, to Purple and Pink dimming wires.

Model	Input Voltage	Frequency	Wattage	Rated Current 120V	Rated Current 277V
PL22-35WPCTS-D	120-277V	60Hz	25W	0.28A	0.10A
			30W	0.33A	0.12A
			35W	0.39A	0.14A
PL24-50WPCTS-D	120-277V	60Hz	30W	0.33A	0.12A
			40W	0.44A	0.16A
			50W	0.55A	0.20A

Item:
PL22-35WPCTS-D
PL24-50WPCTS-D

LED PANEL PCTS INSTALLATION INSTRUCTIONS

T-Grid Installation:

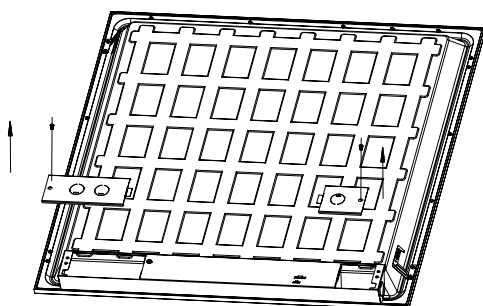


Figure 1

1. At the main fuse/breaker, turn off the power.
2. Remove panel from packaging carefully.
3. Unscrew driver cover and remove knockouts to wire power supply. (Fig1)

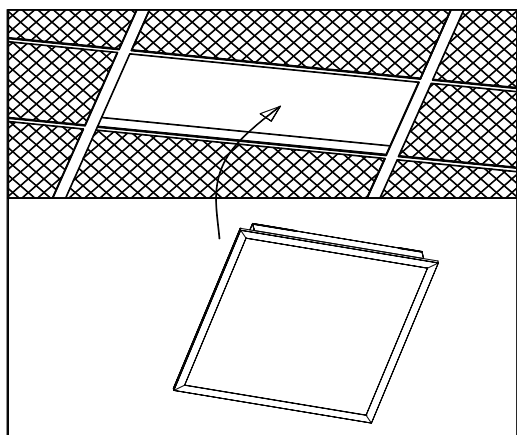
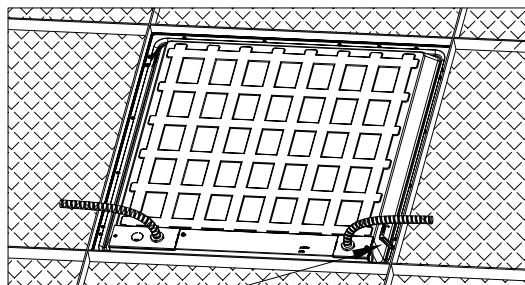


Figure 2

4. Fixture needs to pass through the grid at a 45-degree angle and the fixture needs to lay on the grid (Fig. 2)



5. Grid clips are provided for additional retention to ceiling system. Orient (2) tabs for 2x2 or (4) tabs for 2x4 on back of the fixture over the grid by bending tabs up 90 degrees perpendicular to back of the fixture. Next bend tabs 90 degrees towards T-GRID frame (Fig.3)

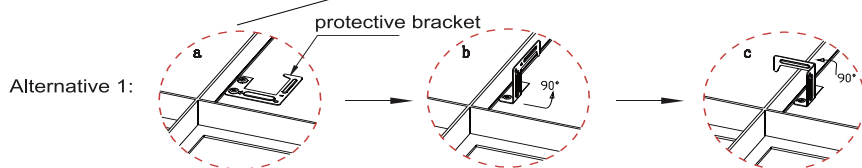


Figure 3

Item:
PL22-35WPCTS-D
PL24-50WPCTS-D

LED PANEL PCTS INSTALLATION INSTRUCTIONS

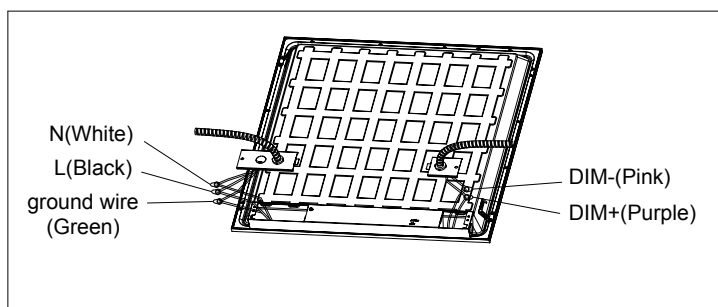
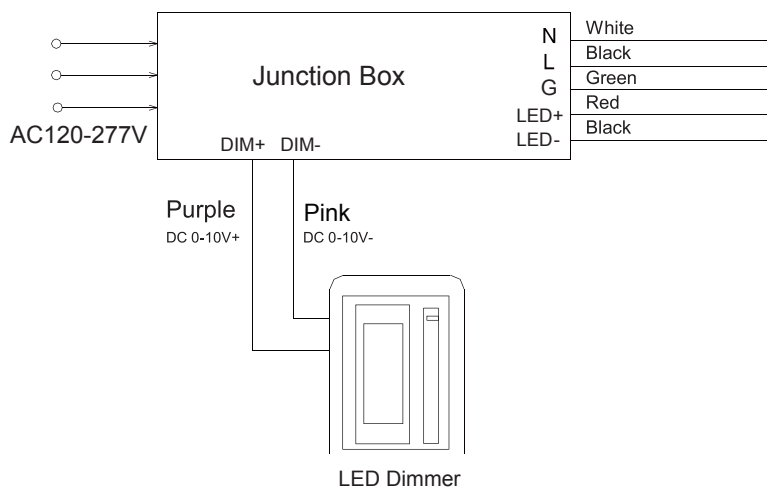


Figure 4

6. Using the open knockout bring in the supply line. Using wire nuts, attach the ground wire to the ground supply wire, the black (line) wire to the black supply wire, and the white (neutral) wire to the white supply wire. (Fig. 4)
7. If using a dimmer, connect the purple(Dim+) and pink(Dim-) dimming leads to the 0-10V dimmer. See wiring diagram below.

Wiring Diagram



NOTE: This fixture is compatible with 0-10V dimming. If installing dimming wires, follow your dimmer instructions for wiring to the Purple (Dim+) and pink (Dim-) leads.

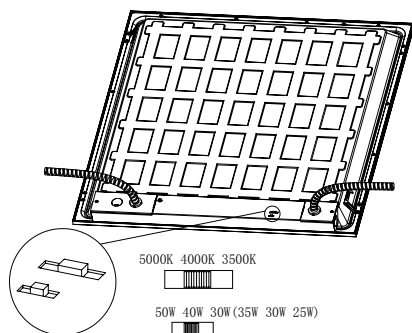


Figure 5

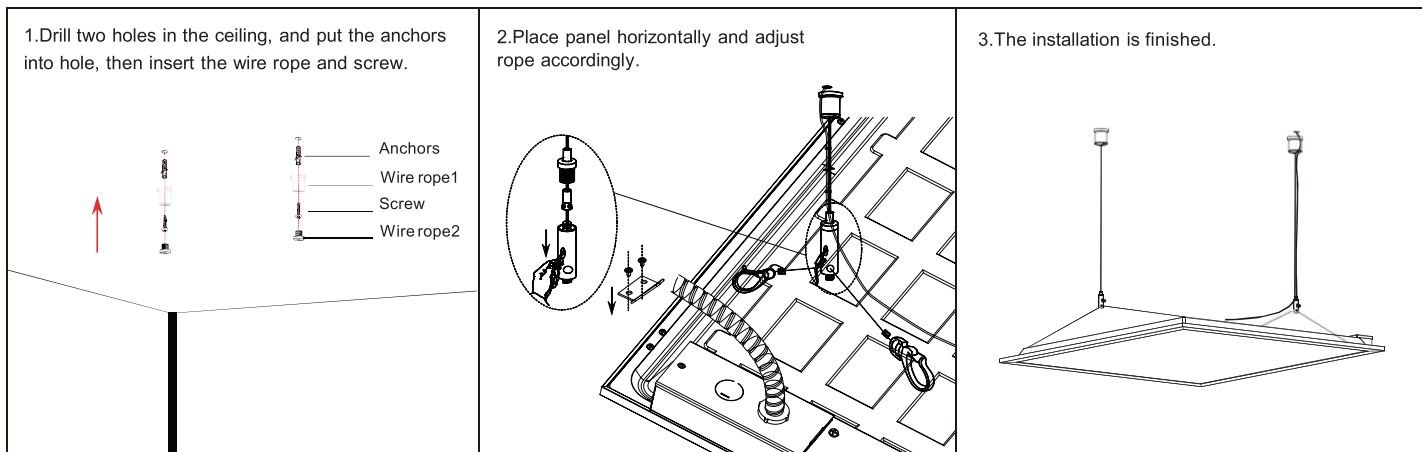
8. Adjust toggle switch to desired color temperature and wattage at the back side of the panel. (Fig. 5)

Item:
PL22-35WPCTS-D
PL24-50WPCTS-D

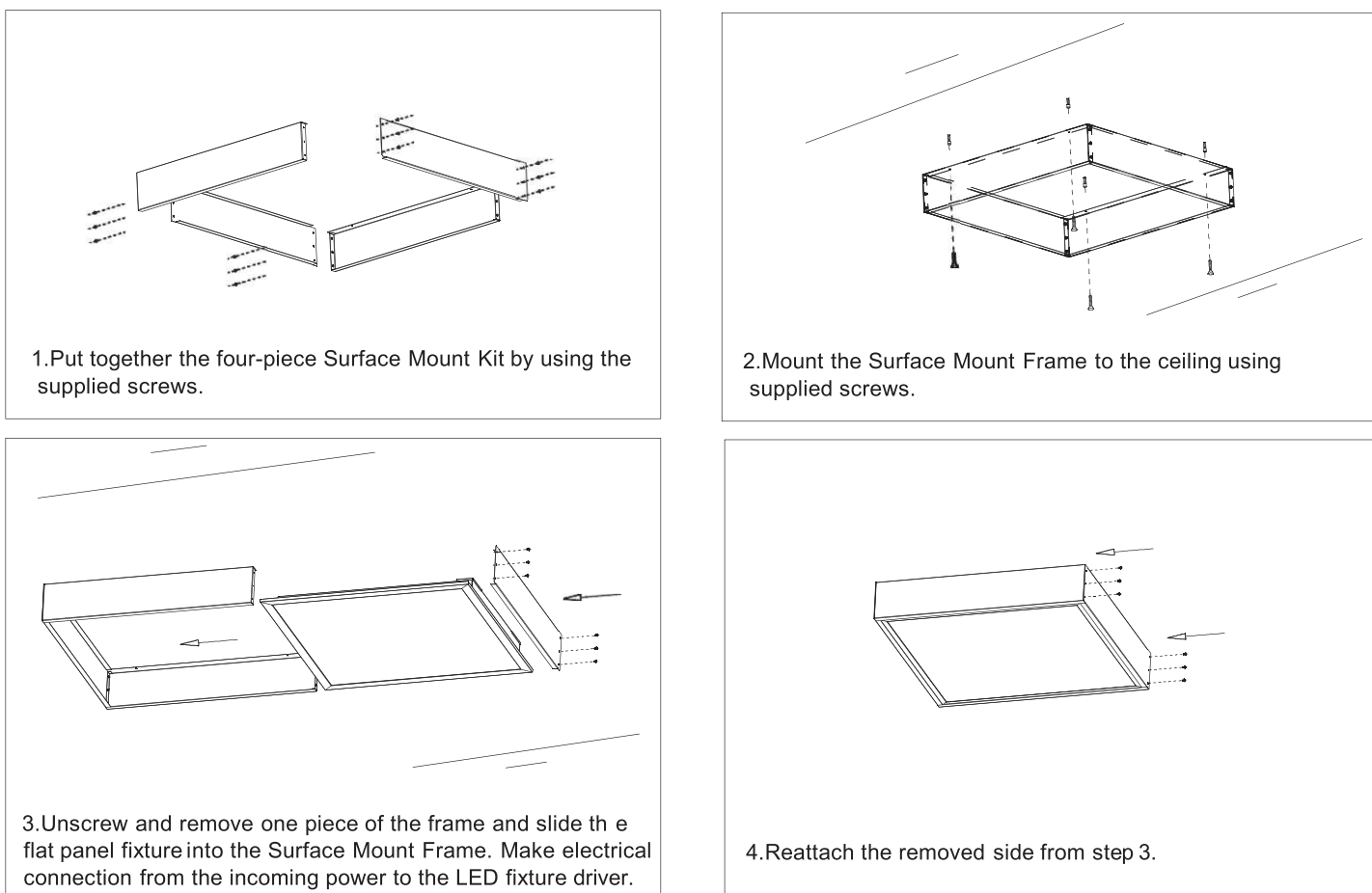


LED PANEL PCTS INSTALLATION INSTRUCTIONS

Suspension Kit Installation (cable assembly must be purchased separately)



Ceiling Mounting (mounting kit sold separately)

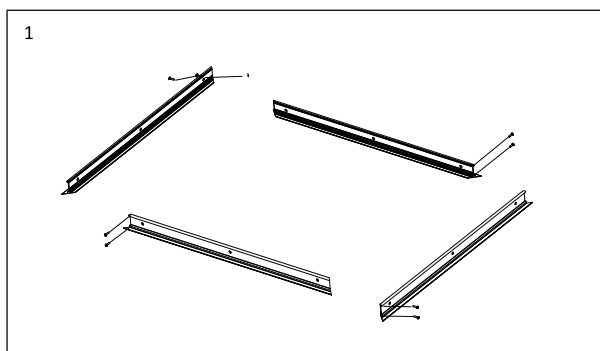


Item:
PL22-35WPCTS-D
PL24-50WPCTS-D

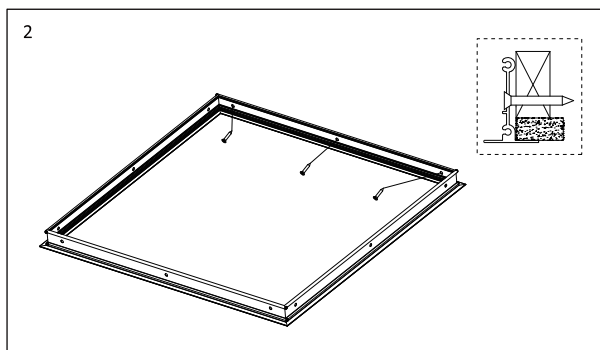
LED PANEL PCTS INSTALLATION INSTRUCTIONS

Drywall flange kit installation (drywall flange kit sold separately)

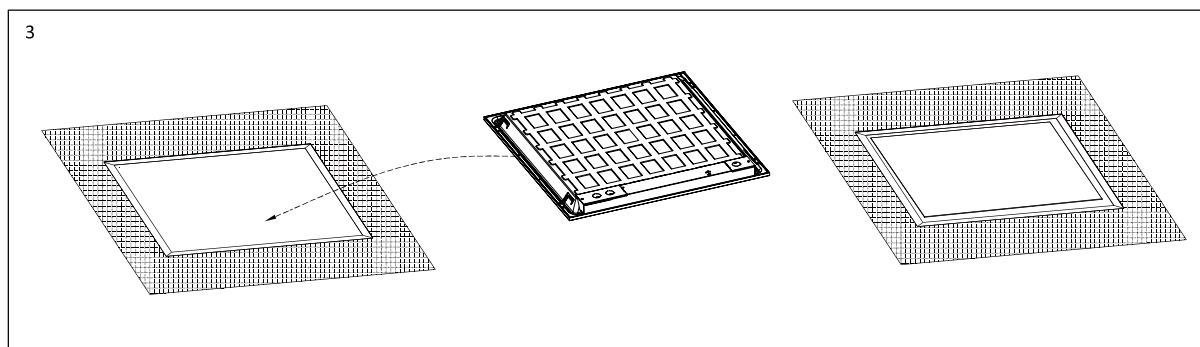
Size	Cut-Out Size(inch)
2'X2' fixture	24-5/8" x 24-5/8"
2'X4' fixture	48-5/8" x 24-5/8"



1. Remove accessories from the package carefully. Put together the four-piece of drywall flange kits by using the supplied Wafer Head Self Tapping Screws . (Fig 1)



2. Place the installed drywall flange kit into the corresponding hole and secure it to the hole with the countersunk head self tapping screws. (Fig 2)
3. Place the panel into the flange kit and connect the input lines. Then the installation is complete. (Fig 3)



Item:
PL22-35WPCTS-D
PL24-50WPCTS-D



LED PANEL PCTS INSTALLATION INSTRUCTIONS

