

Items:

F-VTC22/30/835/D-79
F-VTC22/30/840/D-79
F-VTC24/40/835/D-79
F-VTC24/40/840/D-79

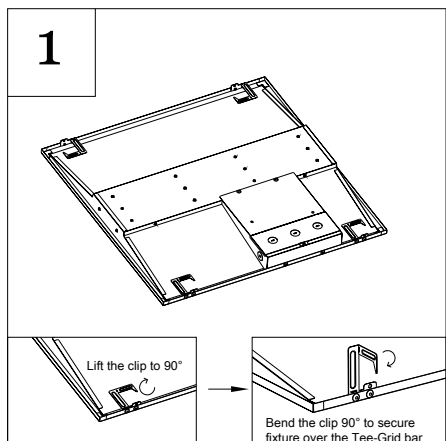


Volumetric Troffer Center Basket INSTALLATION INSTRUCTIONS

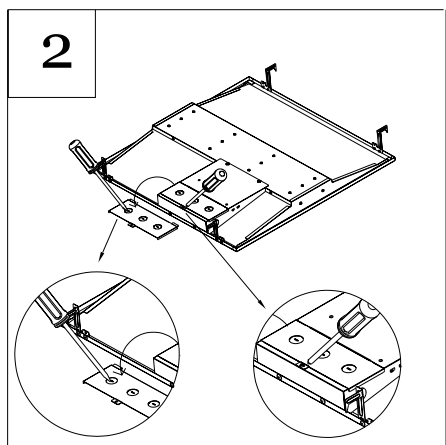
Read instructions carefully before installing. Keep these instructions for future reference. Topaz fixtures must be wired in accordance with the National Electrical Code and all applicable local codes. Proper grounding is required for safety. THIS PRODUCT MUST BE INSTALLED IN ACCORDANCE WITH THE APPLICABLE INSTALLATION CODES BY A QUALIFIED ELECTRICIAN WHO IS FAMILIAR WITH THE CONSTRUCTION AND OPERATION OF THE PRODUCT AND THE HAZARDS INVOLVED.

Installation Steps:

1. Remove the ceiling tile if exists where the Troffer fixture will be installed
2. Slide the fixture as required to fit through the Tee-Grid Bar
3. Lift and bend the pre-installed clips on each corner at 90° against the Tee-Grid Bar to secure the troffer as shown in Fig. 1.



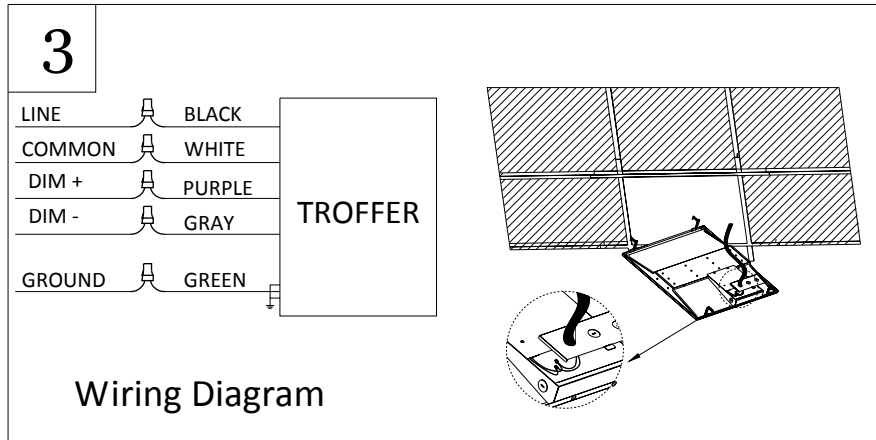
4. Loosen screw to remove the back plate and prepare fixture for wiring connections by removing the appropriate knock outs (See Fig. 2)



PRODUCT NAME AND SERIES

INSTALLATION INSTRUCTIONS

5. Make wiring connections according to the wiring diagram below (See Fig. 3)



6. Replace back plate and tighten the screw to complete installation.