

INSTRUCTIONS FOR LED TEMP LIGHT

Item #'s 17100LEDP3 and 17150LEDP3

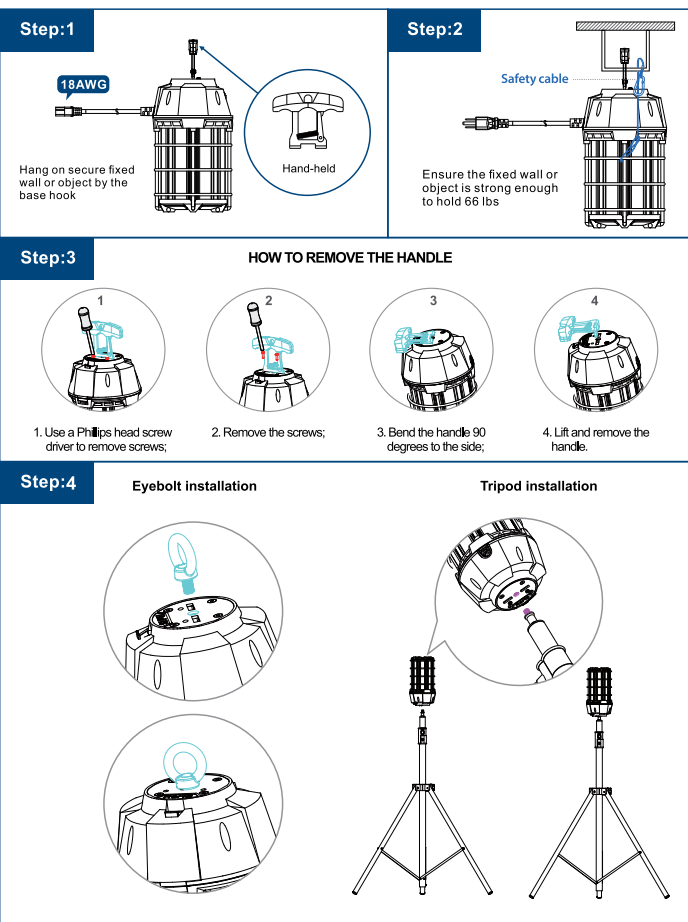


WARNING: RISK OF FIRE OR ELECTRIC SHOCK

**Read and follow all safety instructions before using.
Failure to follow instructions could result in serious injury or death.**

- Fixture must be installed and used in accordance with the NEC (National Electric Code) and all local codes.
- Ensure supply voltage is equal to the rated voltage of the fixture 120V/277V
- Fixture is rated for damp and dry locations only. Do not use where directly exposed to water.
- Do not place this fixture near a radiant heated ceiling, or any other heat source.
- Do not use in hazardous environments (e.g. corrosive gases, explosive gases, etc.).
- Always use included safety cable to securely attach fixture to a support capable of supporting at least 15 lbs.
- If using with 277V, remove the plug and wire fixture in accordance with NEC and local codes.
- Disconnect power and make sure LEDs and drivers are cool to touch before performing maintenance.

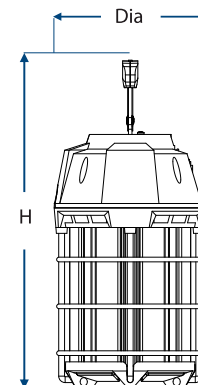
Installation diagram



- Ambient operating temperature (-)22°F to 140°F

Electrical Parameters

| Model No. | Input Wattage | Input Voltage | Weight |
|------------|---------------|--------------------|--------|
| 17100LEDP3 | 100 | 100-277VAC 50~60Hz | 2.4lbs |
| 17150LEDP3 | 150 | 100-277VAC 50~60Hz | 2.7lbs |



| Input Wattage | Lamp Dimensions |
|---------------|--------------------------------|
| 100 | Diameter 5.12" x Height 10.94" |
| 150 | Diameter 5.12" x Height 12.16" |