

Items:

F-FL/15/40K/KN/BZ-87
F-FL/30/40K/KN/BZ-87
F-FL/50/40K/KN/BZ-87
F-FL/50/40K/TR/BZ-87

F-FL/15/50K/KN/BZ-87
F-FL/30/50K/KN/BZ-87
F-FL/50/50K/KN/BZ-87
F-FL/50/50K/TR/BZ-87



LED LOW POWER FLOOD LIGHTS

INSTALLATION INSTRUCTIONS



- DANGER- Risk of shock- Disconnect power before installation.

- Electrical connections must be made in accordance with the NEC and all federal and local electrical safety codes.
- Suitable for damp or wet locations and in ambient temperature range of -40° through 113°F
- Not for use in hazardous environments
- Min 167°F supply conductors.
- This luminaire is rated for 120-277V, 60Hz only.
- Product must be properly grounded to prevent product malfunction and/or electrical shock
- Do not install if lens is cracked, or fixture is damaged in any way

- Please Note -

- Disconnect power and allow to cool prior to cleaning or maintenance.

- Before turning on fixture, check to see if fixture was damaged during transportation. DO NOT install or use fixture if there is visible damage.
- The products itself and all its components should not be mechanically stressed.
- Installation must not damage or destroy conducting paths or other parts of the product.
- Installation of LED product (with power supplies) needs to be made about all applicable electrical and safety standards. Only qualified personnel should be allowed to perform installations.
- Wrong polarity may damage or destroy the LED products.
- DO NOT operate LEDs in reverse bias.
- Electrical connections should always be in a dry area and adequately sealed.
- This product series emits high light output. DO NOT look directly into the light emitting area. Direct exposure to the light over an extended time period may harm eyes.

Input Voltage	Frequency	Power	Input Current
AC120-277V	50/60Hz	15W	0.138A
AC120-277V	50/60Hz	30W	0.275A
AC120-277V	50/60Hz	50W	0.459A

INSTALLATION - Surface Mounting

1. Do not remove any part of the fixture.
2. For product specifications, please see the label on fixture.
3. Terminal block shall conform to UL standard; and s hall be specified as following:
 - The type of terminal: screw/screwless
 - Number of terminals: 3 poles
 - Rated voltage: Min. 277V

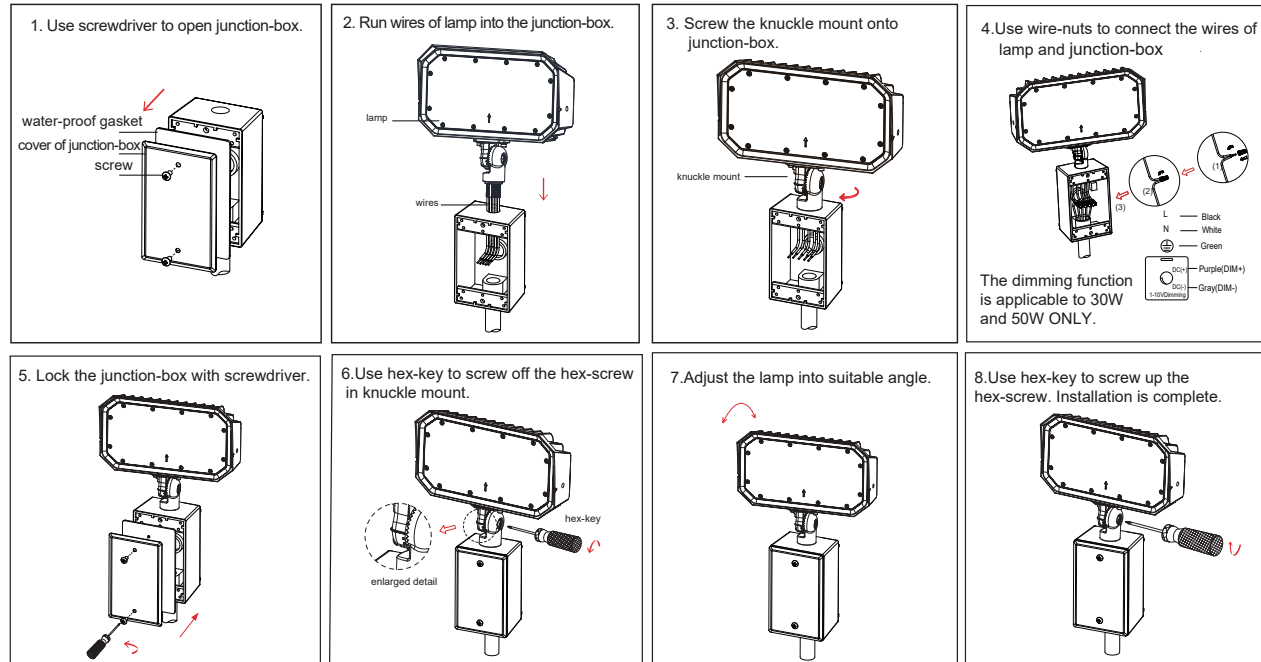
Items:

F-FL/15/40K/KN/BZ-87
F-FL/30/40K/KN/BZ-87
F-FL/50/40K/KN/BZ-87
F-FL/50/40K/TR/BZ-87

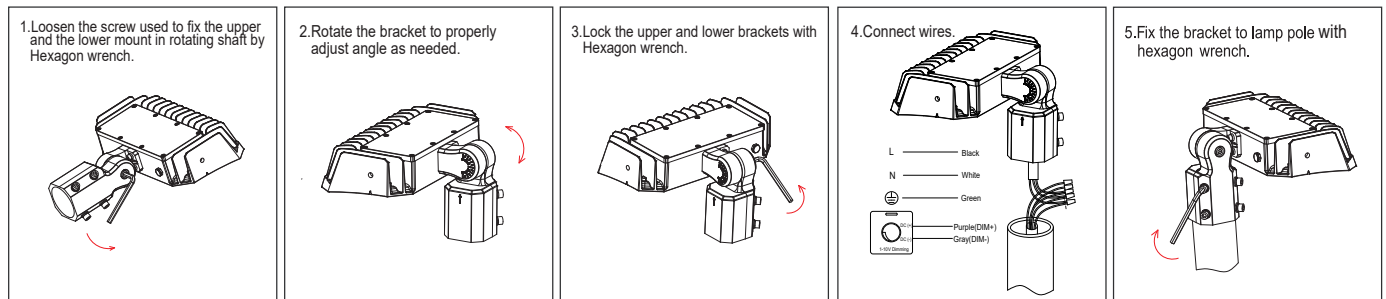
F-FL/15/50K/KN/BZ-87
F-FL/30/50K/KN/BZ-87
F-FL/50/50K/KN/BZ-87
F-FL/50/50K/TR/BZ-87



Installation Instruction (Kunckle)

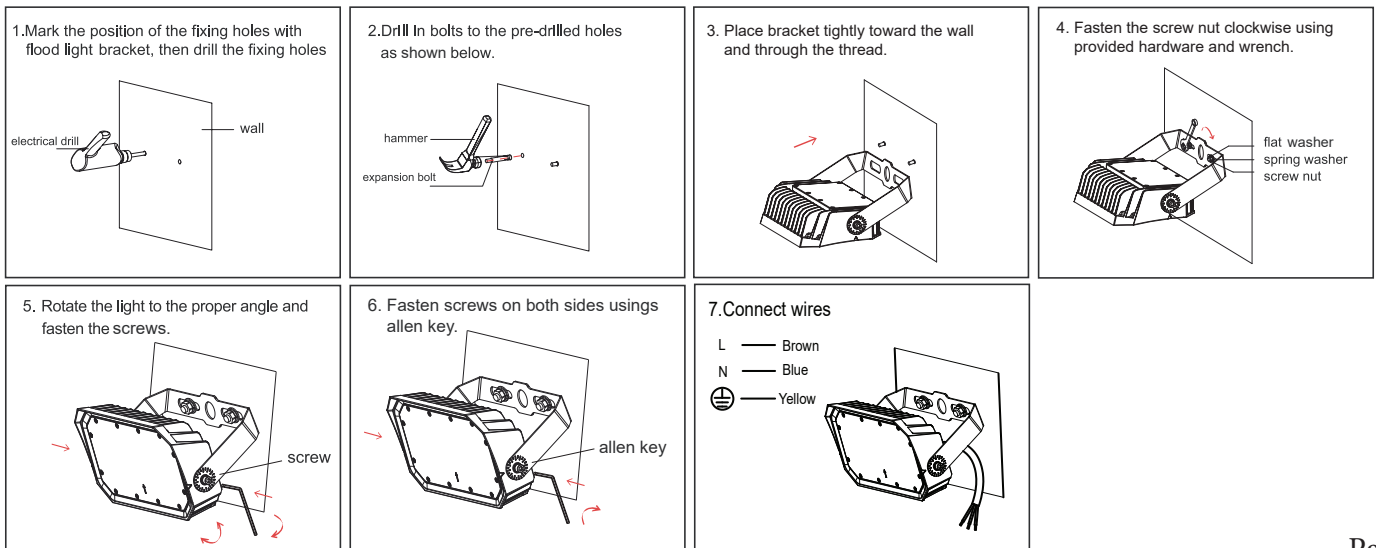


Installation Instruction (Slipfitter)



Notice: The maximum diameter of lamp pole is 2.36", lamp adjustable angle is 0-90°.

Installation Instruction (Trunnion/Yoke)



Items:

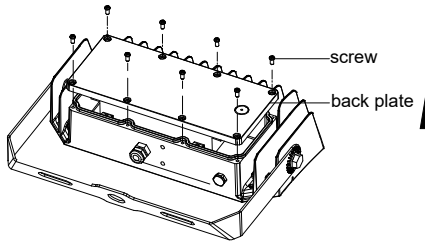
F-FL/15/40K/KN/BZ-87
F-FL/30/40K/KN/BZ-87
F-FL/50/40K/KN/BZ-87
F-FL/50/40K/TR/BZ-87

F-FL/15/50K/KN/BZ-87
F-FL/30/50K/KN/BZ-87
F-FL/50/50K/KN/BZ-87
F-FL/50/50K/TR/BZ-87

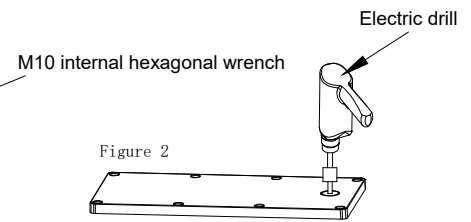
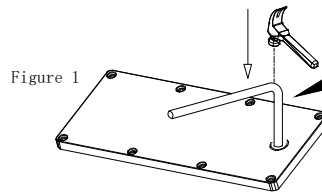


Installation for Photocell Sensor

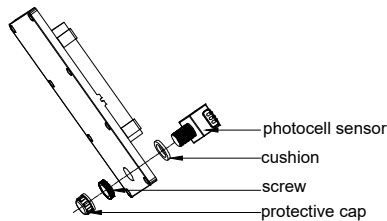
1. Remove screws and back plate



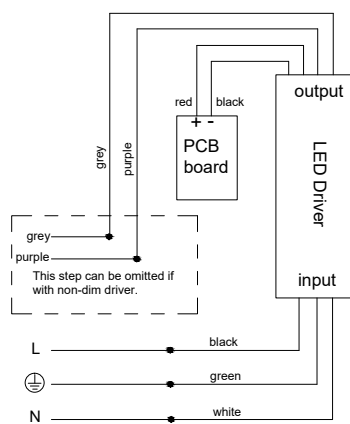
2. Select one of the methods in figure 1 or figure 2 to open the integrated knockout for photocell.



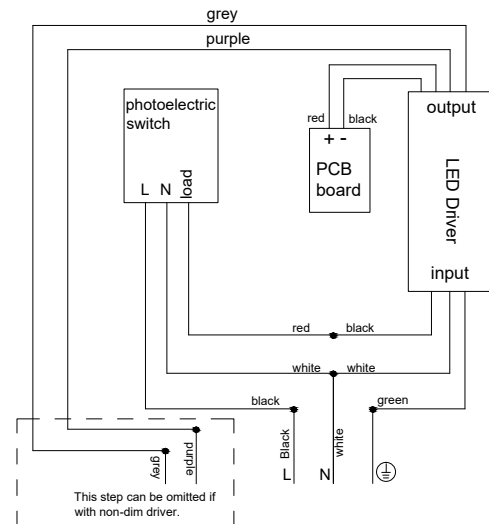
3. Install the photocell sensor on the back plate.



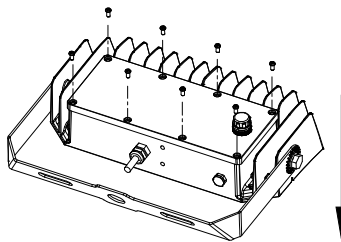
4-1. Original wiring



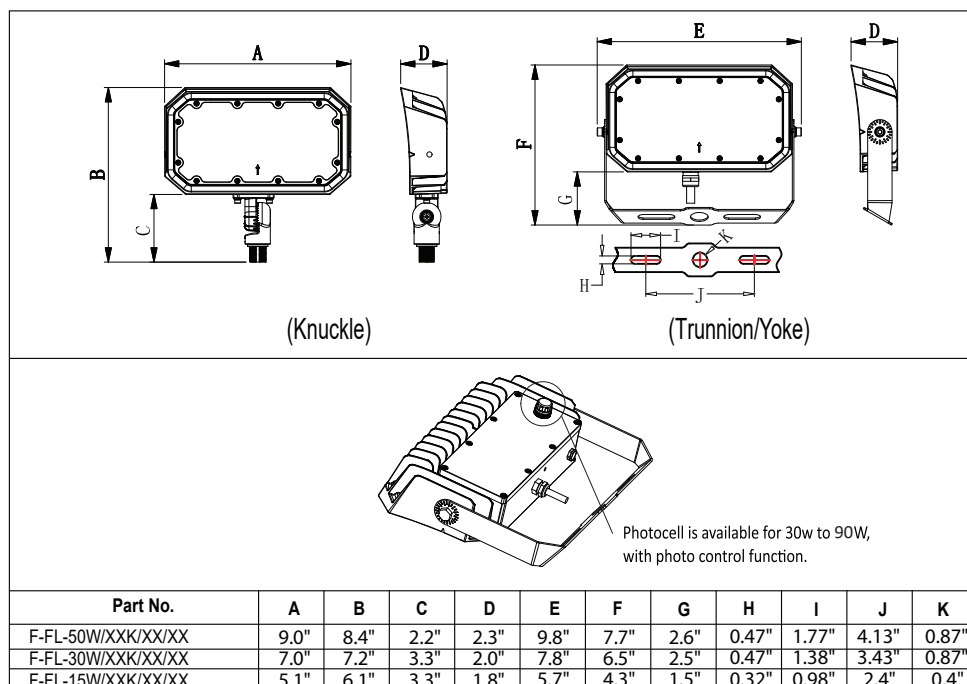
4-2. Wiring with Photocell.



5. Install the back plate, lock the screws and complete the installation.



Product Dimensions



Items:

F-FL/15/40K/KN/BZ-87
 F-FL/30/40K/KN/BZ-87
 F-FL/50/40K/KN/BZ-87
 F-FL/50/40K/TR/BZ-87

F-FL/15/50K/KN/BZ-87
 F-FL/30/50K/KN/BZ-87
 F-FL/50/50K/KN/BZ-87
 F-FL/50/50K/TR/BZ-87



LED LOW POWER FLOOD LIGHTS

INSTALLATION INSTRUCTIONS

