

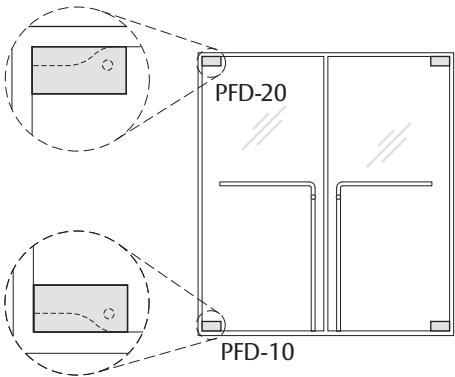
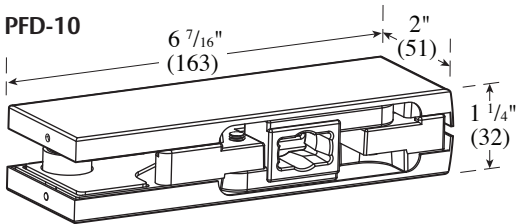
# PFD-20 Top Pivot Patch Fitting & PFD-10 Bottom Patch Fitting Installation Instructions

**ASSA ABLOY**

The global leader in  
door opening solutions

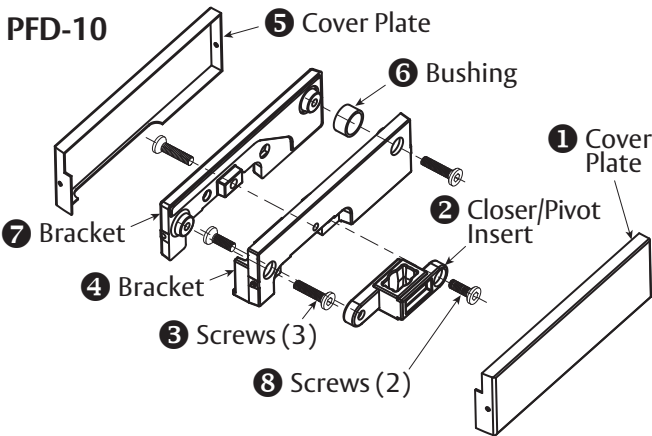
For Installation Assistance, Call 855.594.6989 • [www.assaabloyglass.us](http://www.assaabloyglass.us)

**Tools Needed:**  
Torque Wrench and Bit  
5mm Allen Wrench



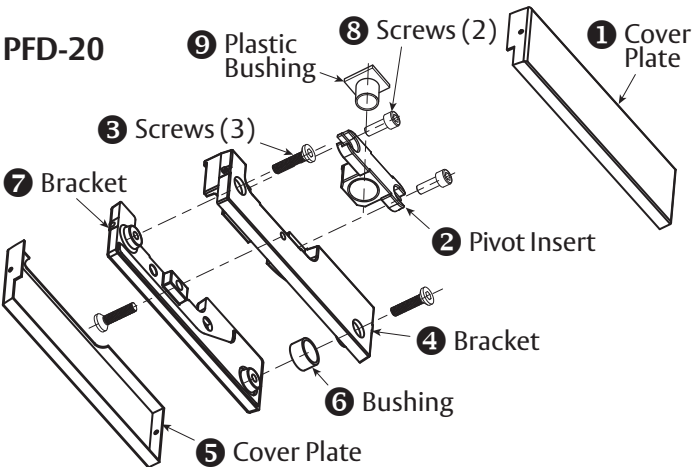
NOT TO SCALE

## Parts Included



PFD-10 Parts List

1	Cover Plate
2	Closer/Pivot Insert — PF-INS10
3	1 1/16" - M6 x 27 Screws (3)
4	Bracket
5	Cover Plate
6	Bushing
7	Bracket
8	3/4" - M6 x 20 Screws (2)



PFD-20 Parts List

1	Cover Plate
2	Pivot Insert — PF-INS20
3	1 1/16" - M6 x 27 Screws (3)
4	Bracket
5	Cover Plate
6	Bushing
7	Bracket
8	3/4" - M6 x 20 Screws (2)
9	Plastic Bushing

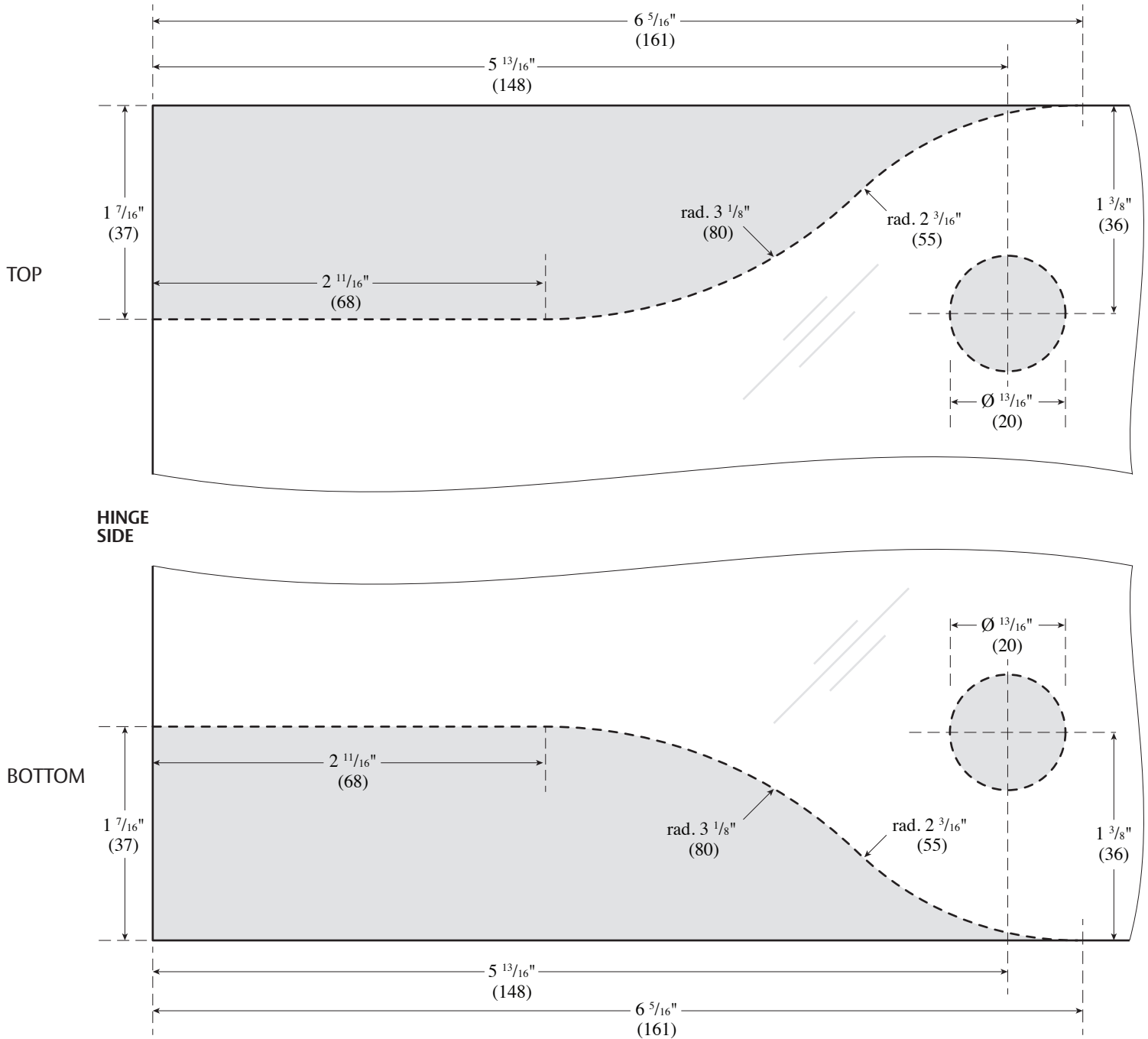
# 1. Prepare the Door

## USE FABRICATION SKETCH TO DRILL AND CUT GLASS.

- Cut away glass (shaded area) along dotted line to match sketch dimensions.
- Drill  $\frac{13}{16}$ " (20 mm) diameter hole.

NOT TO SCALE

DIMENSIONS IN INCHES (MILLIMETERS)



**Caution:** Office copiers, printers and facsimile machines may change the size of a drawing and make it inaccurate to use as a template.

**ASSA ABLOY**

The global leader in  
door opening solutions

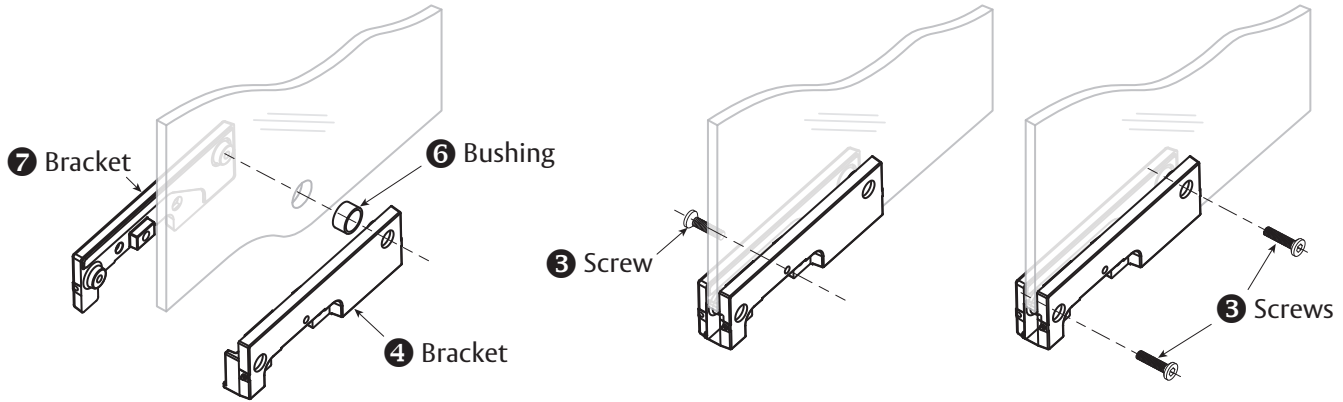
Copyright © 2017, ASSA ABLOY Inc. All rights reserved. Reproduction in whole or in part  
without the express written permission of ASSA ABLOY Inc. is prohibited.

PFD-20, PFD-10 - 06/17

## 2. Fasten Support Brackets (PFD-10 - Bottom)

Make sure the surface is thoroughly cleaned.

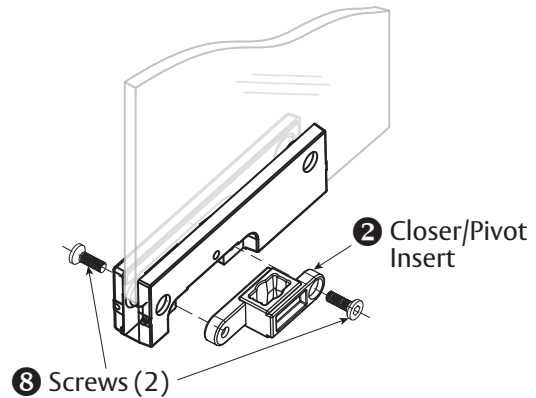
- Insert Bushing **6** in prepped  $\frac{13}{16}$ " (20 mm) diameter hole.
- Place Bracket **4** into prepped area of glass door, join Bracket **7** from the other side. Insert Screw **3** into main center hole and tighten with fingers to hold Brackets together. Do not tighten completely to allow for adjustments throughout installation.
- Insert 2 remaining Screws **3** into Bracket **4**, align fitting to desired position. Torque both Screws to 12 nm. Then tighten center Screw to 12 nm.



## 3. Install Bottom Closer/Pivot Insert

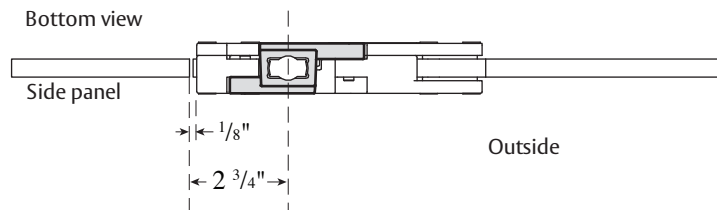
Ensuring that the long leg is facing the hinge side of the door and the wide tapered side is at the bottom of the patch.

- Insert Screws **8** on either side of Closer/Pivot Insert **2** to secure to patch fitting.
- Do not tighten completely to allow for adjustments throughout installation.



## 4. Align Bottom Closer/Pivot Insert

- Alignment of Closer/Pivot Insert **2** is determined by pivot pin (part not included).
- After alignment tighten Screws **9** completely by alternating.



**ASSA ABLOY**

The global leader in  
door opening solutions

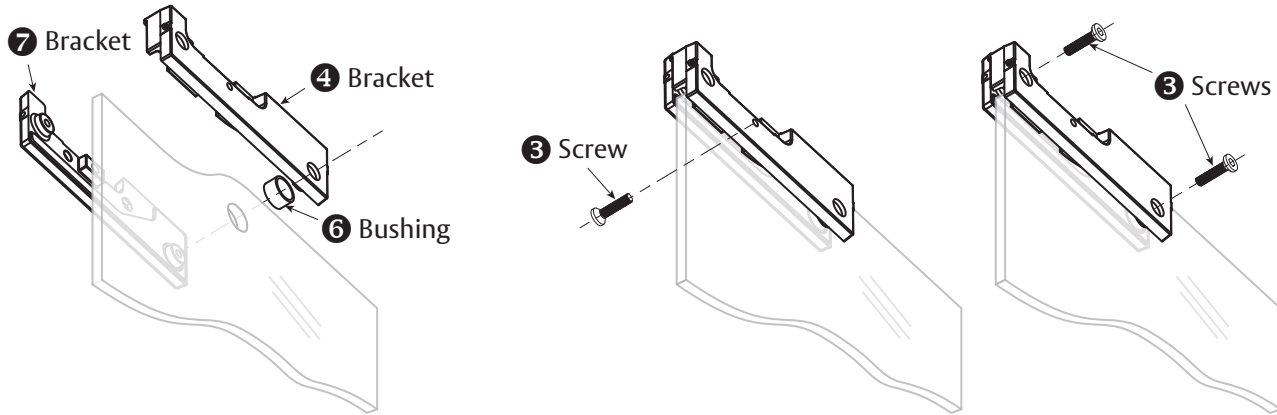
Copyright © 2017, ASSA ABLOY Inc. All rights reserved. Reproduction in whole or in part without the express written permission of ASSA ABLOY Inc. is prohibited.

PFD-20, PFD-10 - 06/17

## 5. Fasten Support Brackets (PFD-20 - Top)

Make sure the surface is thoroughly cleaned.

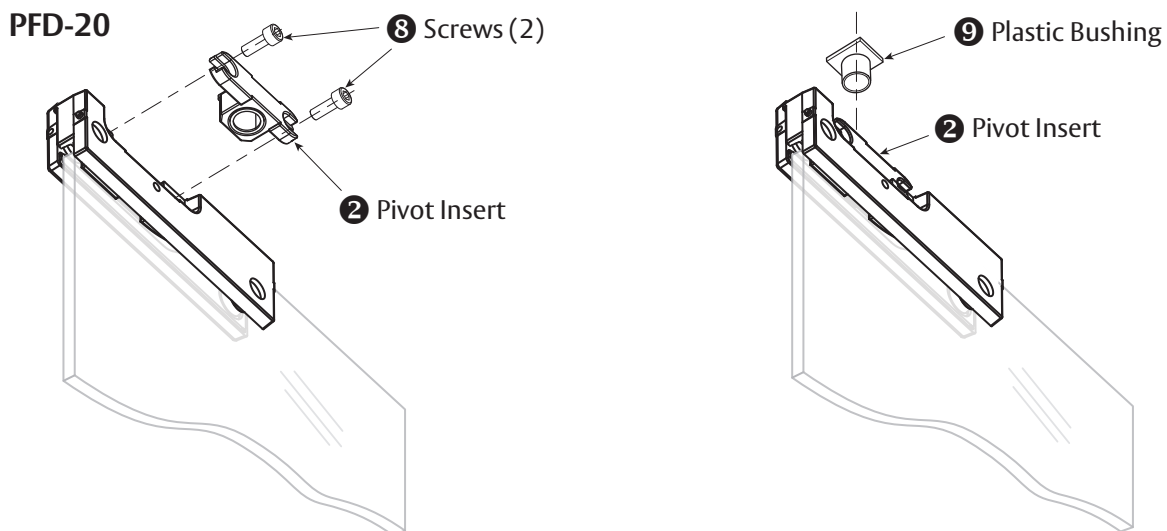
- Insert Bushing **6** in prepped  $\frac{13}{16}$ " (20 mm) diameter hole.
- Place Bracket **4** into prepped area of glass door, join Bracket **7** from the other side. Insert Screw **3** into main center hole and tighten with fingers to hold Brackets together. Do not tighten completely to allow for adjustments throughout installation.
- Insert remaining 2 Screws **3** into Bracket **4**, align fitting to desired position. Torque both Screws to 15 nm. Then tighten center Screw to 15 nm.



## 6. Install Top Pivot Insert

Ensuring that the long leg is facing the hinge side of the door.

- Insert Screws **8** on either side of Pivot Insert **2** to secure to patch fitting.
- Align Pivot Insert **2** as in Step 4.
- Insert Plastic Bushing **9** into top of Pivot Insert.



**ASSA ABLOY**

The global leader in  
door opening solutions

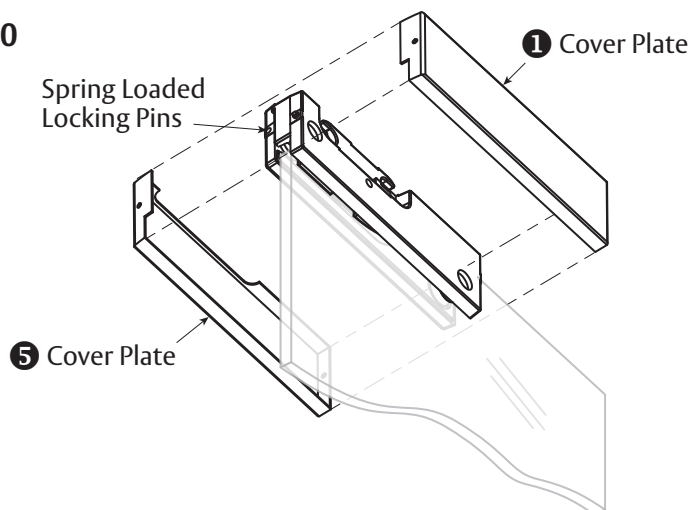
Copyright © 2017, ASSA ABLOY Inc. All rights reserved. Reproduction in whole or in part without the express written permission of ASSA ABLOY Inc. is prohibited.

PFD-20, PFD-10 - 06/17

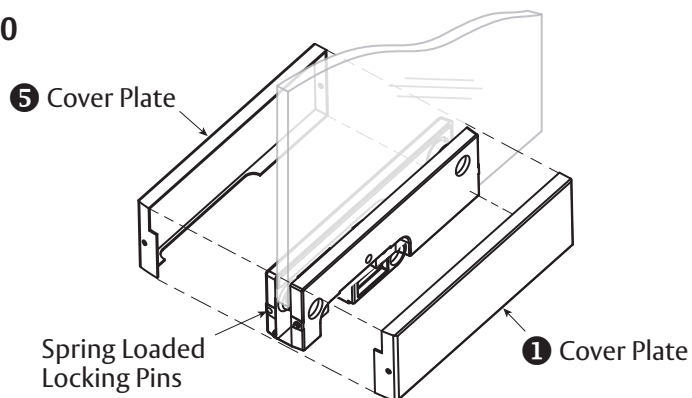
## 7. Install Cover Plates

- Remove adhesive strip paper on both Brackets (4, 7) to adhere Cover Plates (5, 1).
- Hook Cover Plates 5 & 1 over hinge side locking pin.
- Push in spring loaded locking pin on opposite side of Bracket.
- Snap on Cover Plates.

**PFD-20**



**PFD-10**



**ASSA ABLOY**

The global leader in  
door opening solutions

Copyright © 2017, ASSA ABLOY Inc. All rights reserved. Reproduction in whole or in part without the express written permission of ASSA ABLOY Inc. is prohibited.

PFD-20, PFD-10 - 06/17

ASSA ABLOY is the global  
leader in door opening solutions,  
dedicated to satisfying  
end-user needs for security,  
safety and convenience

---

**ASSA ABLOY**

---

[www.assaabloyglass.us](http://www.assaabloyglass.us)

USA:  
ASSA ABLOY Glass Solutions  
Rockwood, PA 15557  
Phone: 855.594.6989