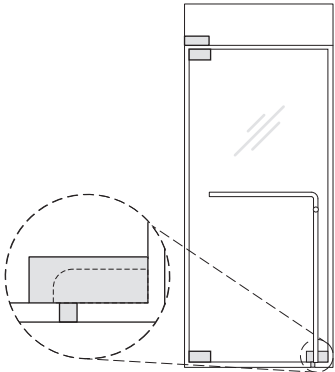
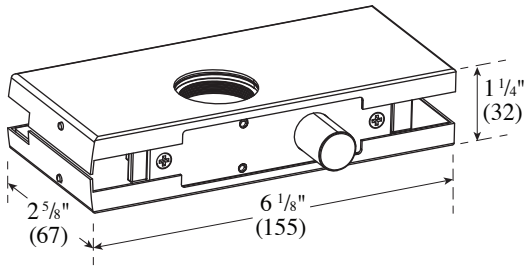


# PFD-100L Bottom Patch Lock Installation Instructions

For Installation Assistance, Call 855.594.6989 • [www.assaabloyglass.us](http://www.assaabloyglass.us)

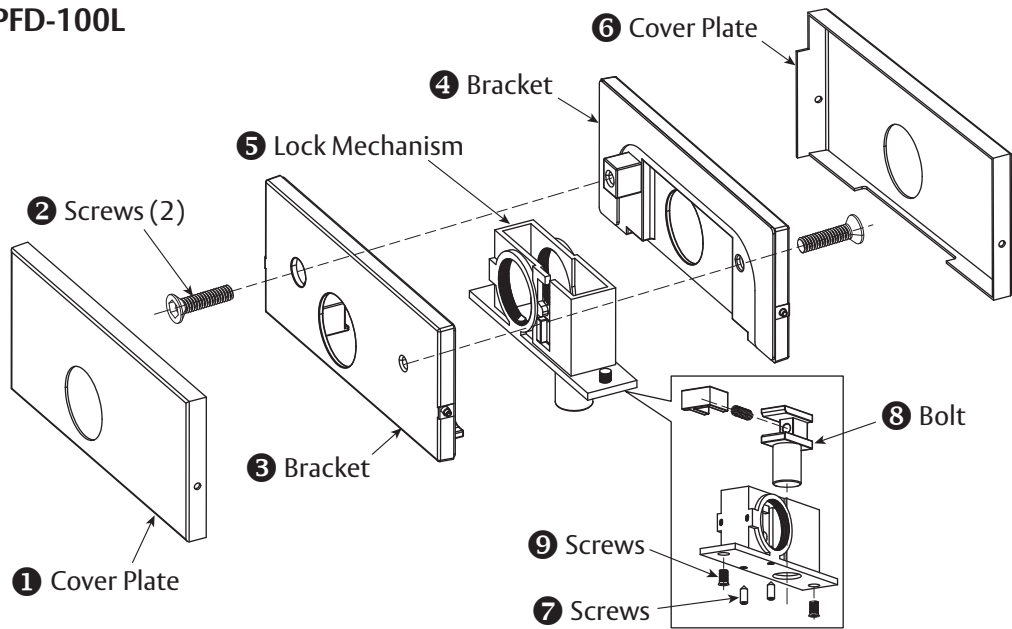
**Tools Needed:**  
Torque Wrench and Bit  
Screwdriver (Phillips)  
5mm Hex Wrench



NOT TO SCALE

## Parts Included

### PFD-100L



PFD-100L Parts List

1	Cover Plate
2	1 1/16" - M6 x 27 Screws (2)
3	Bracket
4	Bracket
5	Lock Mechanism

6	Cover Plate
7	Set Screws (2)
8	Bolt
9	5/16" - M4 x 10 Phillips Head Screws (2)

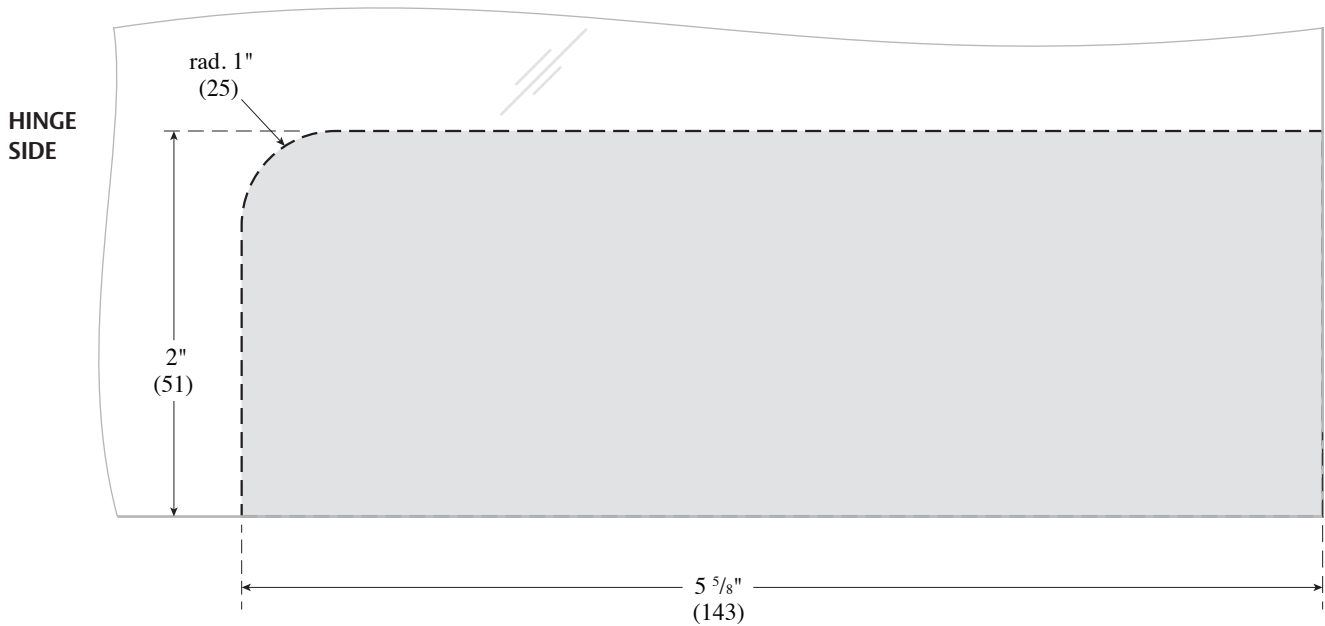
# 1. Prepare the Glass

## USE FABRICATION SKETCH TO DRILL GLASS.

- Cut away glass (shaded area) along dotted line to match sketch dimensions.

NOT TO SCALE

DIMENSIONS IN INCHES (MILLIMETERS)

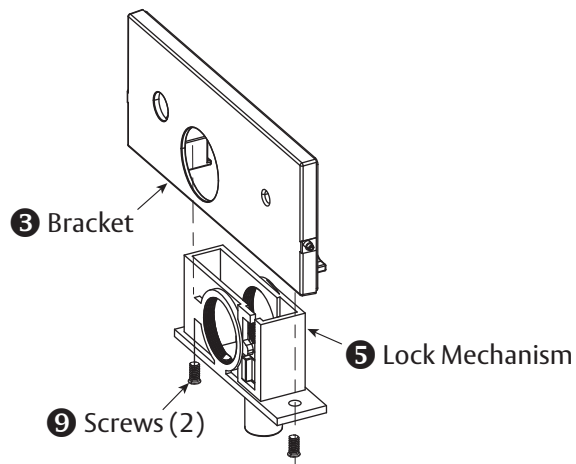


**Caution:** Office copiers, printers and facsimile machines may change the size of a drawing and make it inaccurate to use as a template.

# 2. Attach Lock Mechanism

- Attach Lock Mechanism ⑤ to Bracket ③ using Screws ⑨.

This should be preassembled.



# ASSA ABLOY

The global leader in  
door opening solutions

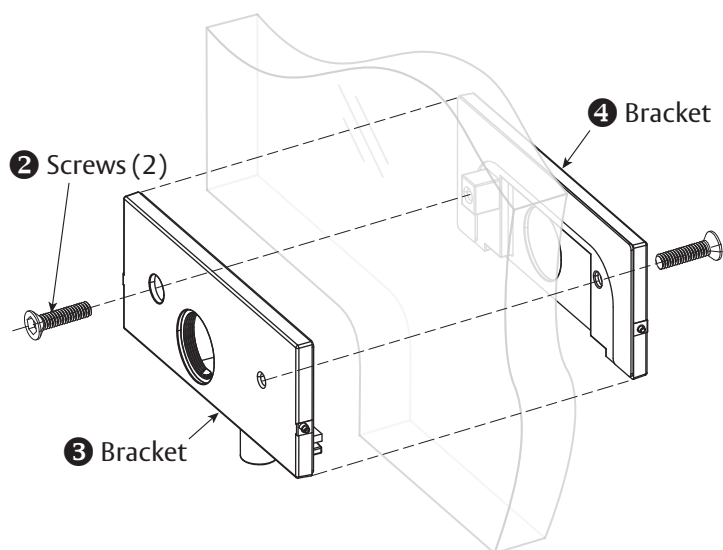
Copyright © 2017, ASSA ABLOY Inc. All rights reserved. Reproduction in whole or in part without the express written permission of ASSA ABLOY Inc. is prohibited.

PFD-100L - 06/17

### 3. Fasten Brackets

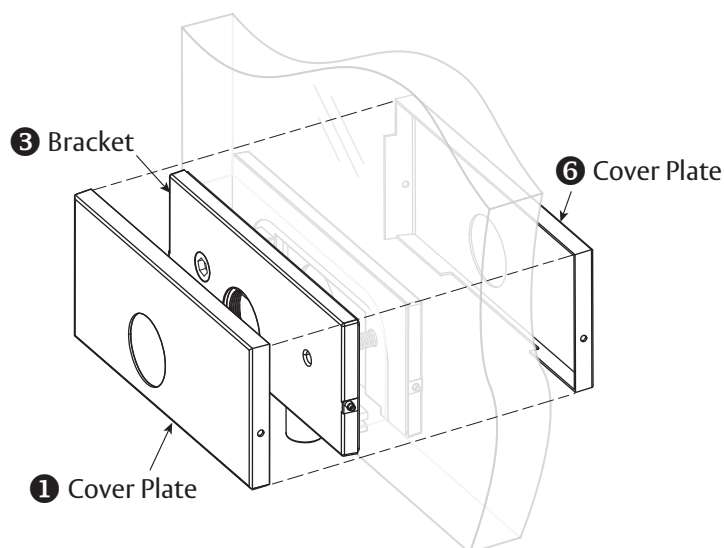
Make sure the surface is thoroughly cleaned and remove all screws.

- Join Bracket **3** to Bracket **4** from the other side ensuring that the bushing sides of Brackets are facing the glass. Insert Screws **2** into holes and tighten with 5mm hex wrench to hold Brackets together. Do not tighten completely to allow for final adjustments.
- Align fitting to desired position.  
Torque both Screws **2** to 12 nm.



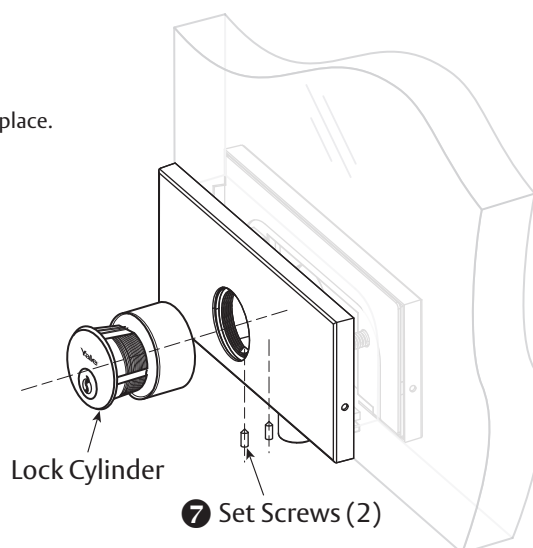
### 4. Adhere Cover Plates

- Remove adhesive strip paper on both Brackets **3** & **4** to adhere Cover Plates **1** & **6**.
- Hook Cover Plates **1** & **6** over side fixed locking pin.
- Push in spring loaded locking pin on other side of Brackets.
- Snap on Cover Plates.



### 5. Install Cylinder/Thumbturn

Install cylinder/thumbturn and tighten bottom set screws to hold them in place.



**ASSA ABLOY**

The global leader in  
door opening solutions

Copyright © 2017, ASSA ABLOY Inc. All rights reserved. Reproduction in whole or in part without the express written permission of ASSA ABLOY Inc. is prohibited.

PFD-100L - 06/17

ASSA ABLOY is the global  
leader in door opening solutions,  
dedicated to satisfying  
end-user needs for security,  
safety and convenience

---

**ASSA ABLOY**

---

[www.assaabloyglass.us](http://www.assaabloyglass.us)

USA:  
ASSA ABLOY Glass Solutions  
Rockwood, PA 15557  
Phone: 855.594.6989