

## HYD-HINGE Glass to Wall Hydraulic Hinge Instructions

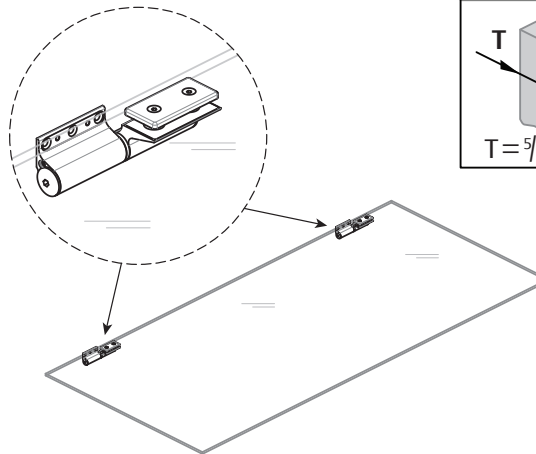
NOTE: When installing ADA version of HYD-HINGE, the hydraulic hinge will mount at the bottom location, while the dummy hinge (SOL) mounts at the top location.

### Instructions

#### 1. Attach Hinges to Glass Door

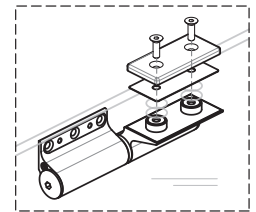
- A: Align hinge to door holes.
  - B: Tighten screws with Allen wrench.
- See figure 1 for reference.

Note: When installing lay glass door horizontally. Make sure glass is clean.



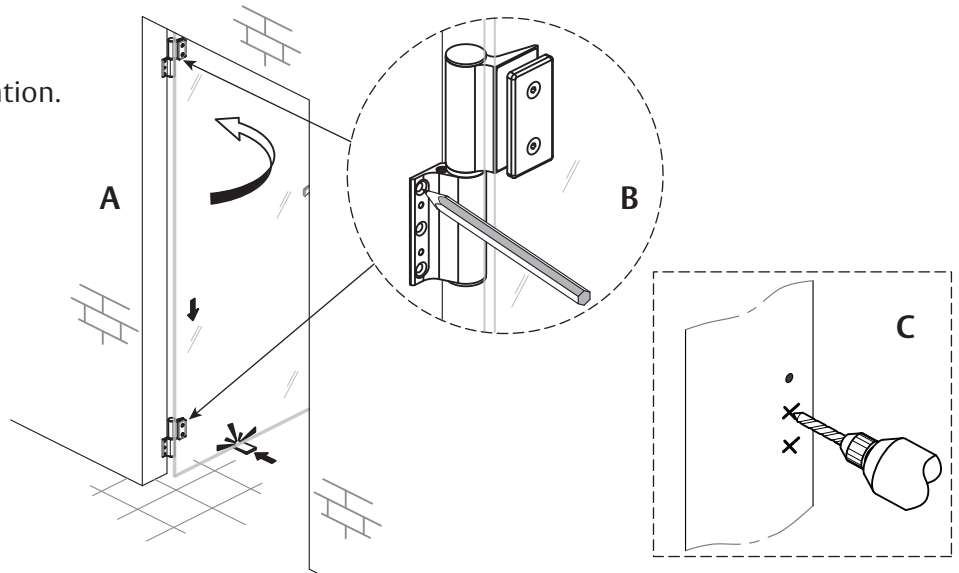
GLASS	T	SCREW
	$\frac{5}{16}'' - \frac{3}{8}''$	M6x16
	$\frac{3}{8}'' - \frac{1}{2}''$	M6x20
	$\frac{1}{2}'' - \frac{11}{16}''$	M6x25
	$\frac{11}{16}'' - \frac{7}{8}''$	M6x30

Figure 1



#### 2. Prep Opening

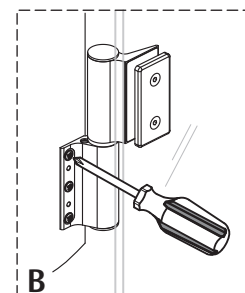
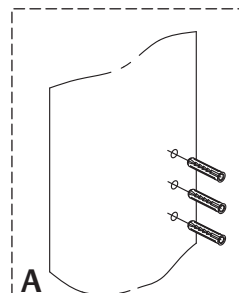
- A: Position door in desired location.
- B: Mark hinge holes for drilling.
- C: Drill appropriate holes into opening jamb.



#### 3. Attach Door

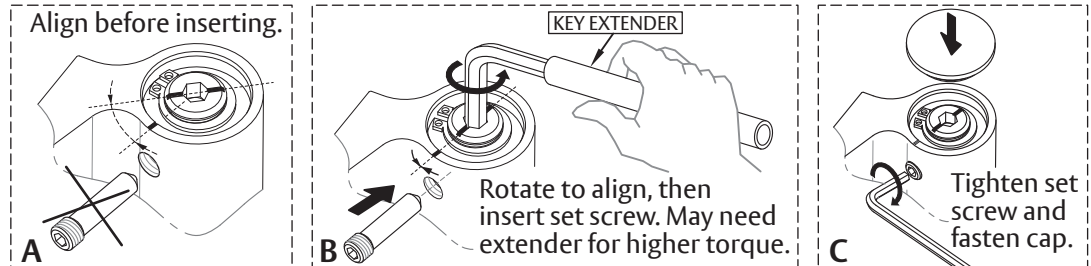
- A: Place anchors into prepped holes if needed for wall condition.
- B: Position and fasten door to jamb using screws.

*Anchors supplied by others.*



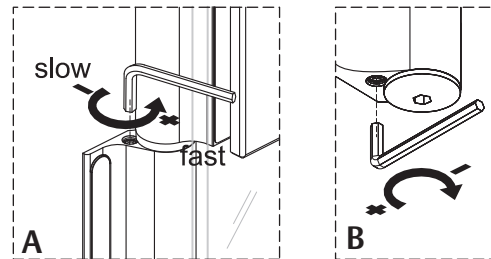
#### 4. Align Top Hinge

- A: Align center shaft with hole.
- B: Insert set screw.
- C: Tighten set screw and fasten cap.



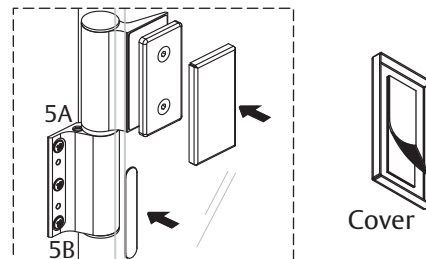
#### 5. Adjust Closing and Latching Speed of Top Hinge

- A: Use Allen wrench to adjust closing speed.
- B: Use Allen wrench to adjust latching speed.



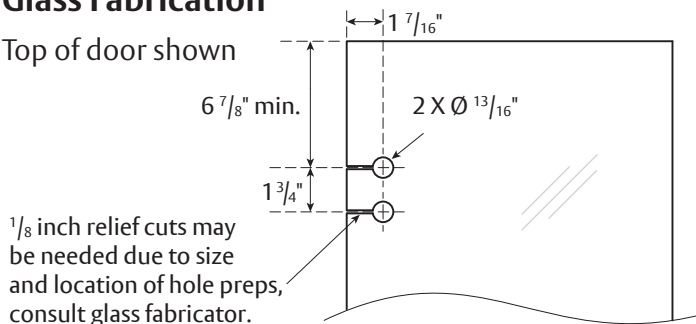
Repeat steps 4 & 5 for bottom hinge.

#### 6. Place decorative covers on hinges.



#### Glass Fabrication

Top of door shown



Bottom location off floor.

