

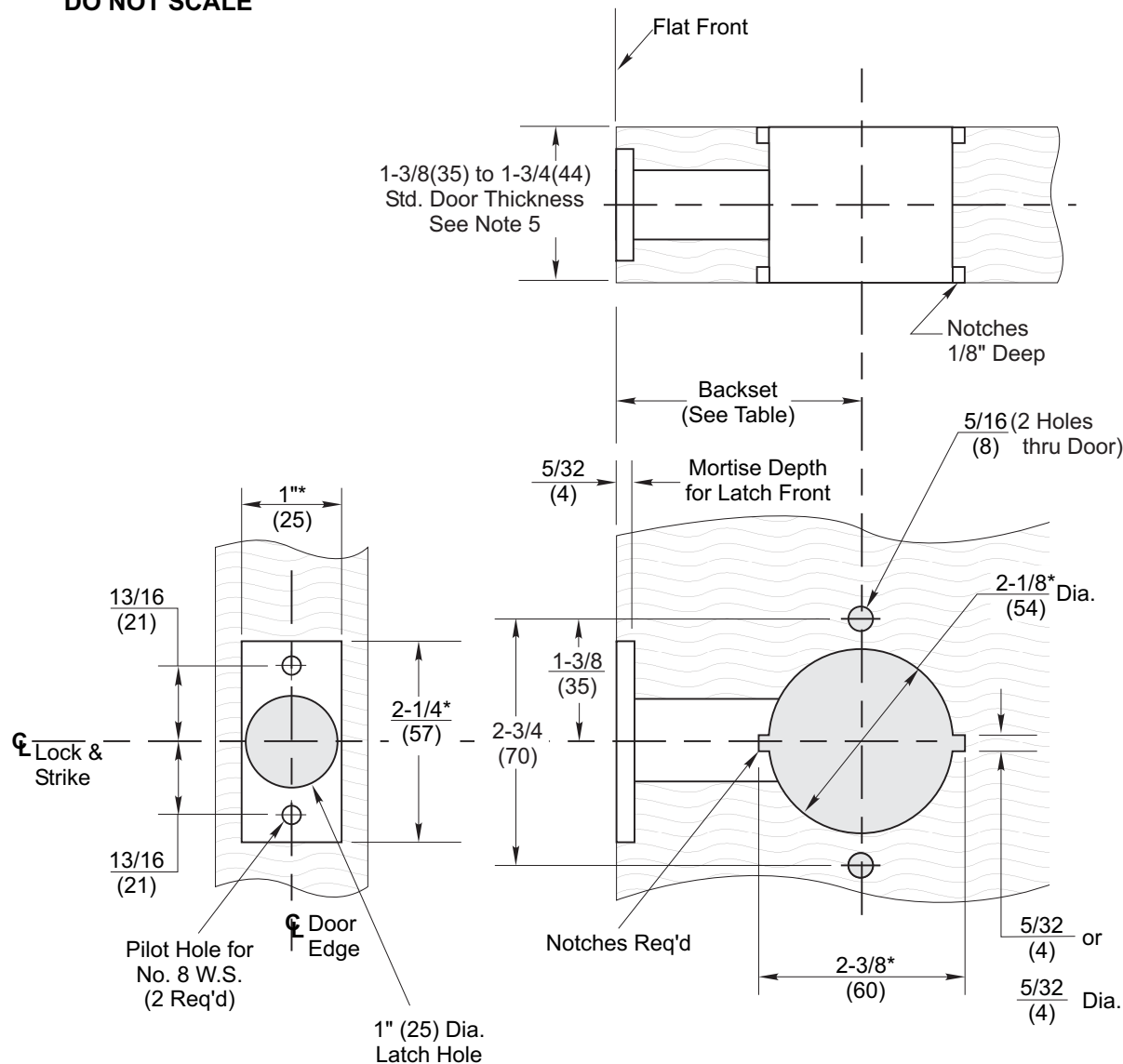
5300LN SERIES Lever Locks

DO NOT SCALE

Backset	Latch No.	Link No.
$\frac{2-3}{8}$ (60)	380N, 378N	—
$\frac{2-3}{4}$ (70)	380CN, 380DN	—
$\frac{3-3}{4}$ (95)	3380CN, 3380DN	—
$\frac{5}{127}$ (127)	380N, 378N	381N

Notes:

- When 4-7/8" (123.8) Strike is specified, refer to Yale No. 497 Strike, Template No. 7102-0003.
- When T- Strike is specified, refer to Yale No. 371 Strike, Template 7102-0005.
- Dimensions marked with * have tolerances of +1/32, -0.
- All dimensions given in inches (mm).
- Std. Locks adjustable for 1-3/8"(35) to 1-3/4"(44) door thicknesses. Special order locks adjustable for 2"(51) to 2-1/4"(57) door thickness.



5300LN Series Lever Handle Cylindrical Locks - 1" Wide Front
Wood Door Preparation (See ANSI/BHMA A156.115)
2-3/8" and Optional Backsets

Yale

An ASSA ABLOY Group brand

www.yalecommercial.com

TEMPLATE NUMBER

7150-0065

DATE

4-08