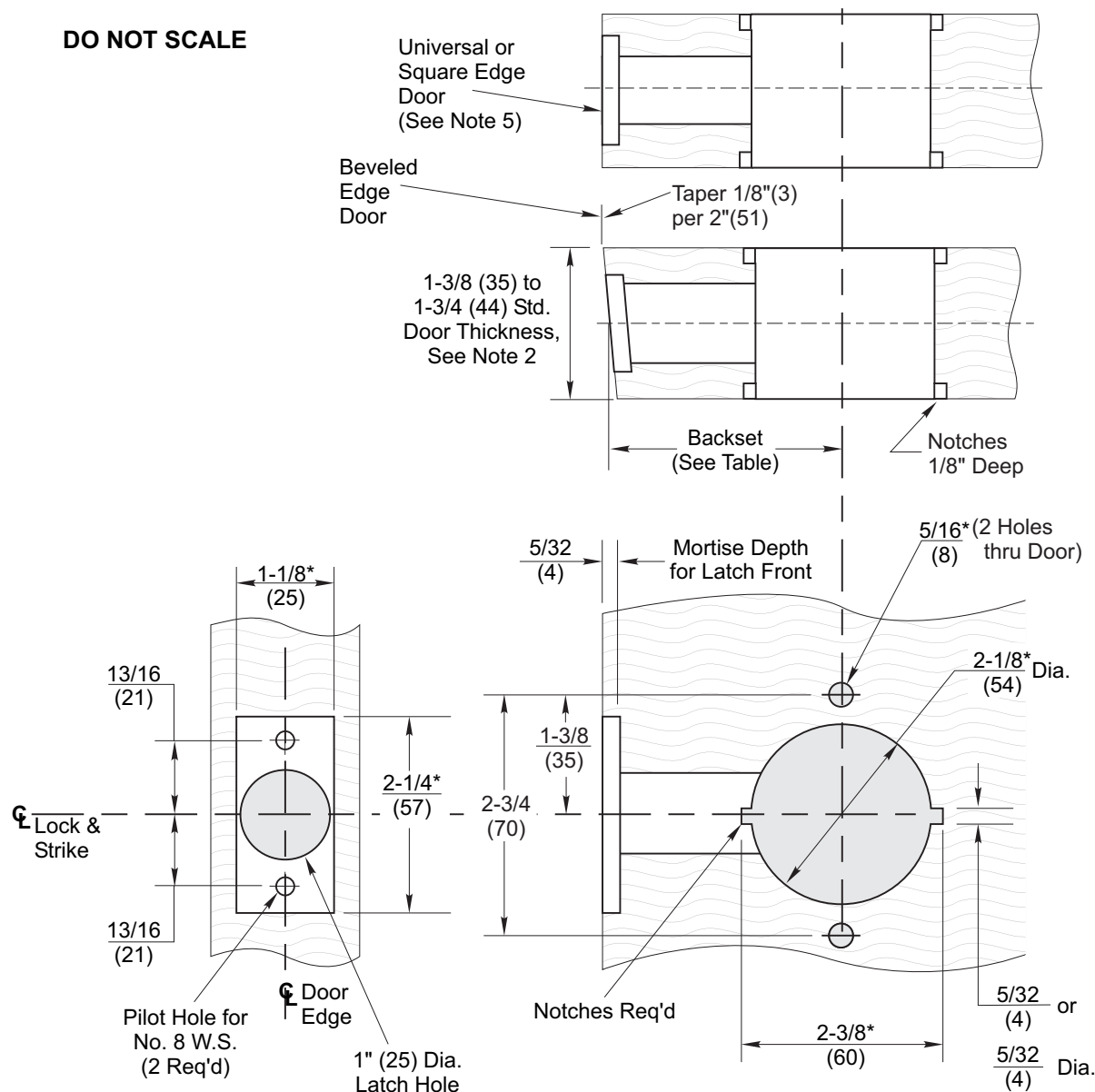


5400LN SERIES Key-In Lever Cylindrical Locks				
Backset	1/2" Throw		3/4" Throw	
	Latch No.	Link No.	Latch No.	Link No.
2-3/4 (70)	693 or 694	-	480B	-
3-3/4 (95)	3693 or 3694	-	3480B	-
5 (127)	693 or 694	481DL	480B	481DL
6 (152)	3693 or 3694	481	3480B	481
7 (178)	693 or 694	482	480B	482
8 (203)	3693 or 3694	482	3480B	482
18 (457)	693 or 694	484	480B	484
19 (483)	3693 or 3694	484	3480B	484

**Notes:**

- For strike preparation refer to:  
495 Strike - Template No. 7102-0005  
497 Strike - Template No. 7102-0003
- The 5400LN locks can be installed on 1-3/8" (35mm) thick doors by using two (2) #14-5401-6644 spacers under the inside and outside roses.
- For HM door preparation refer to Template No. 7150-0056.
- All dimensions given in inches (mm).
- For universal or square edge doors use latchbolts with flat front (i.e. F694, F480B, etc.)
- Dimensions marked with \* have tolerances of +1/32, -0.

**DO NOT SCALE**



**5400LN Series Key-In-Lever Cylindrical Locks - 1-1/8" Wide Front  
Wood Door Preparation (See ANSI/BHMA A156.115)  
2-3/4" and Optional Backsets**

**Yale**

An ASSA ABLOY Group brand

www.yalecommercial.com

TEMPLATE NUMBER

**7150-0057**

DATE

**4-08**