

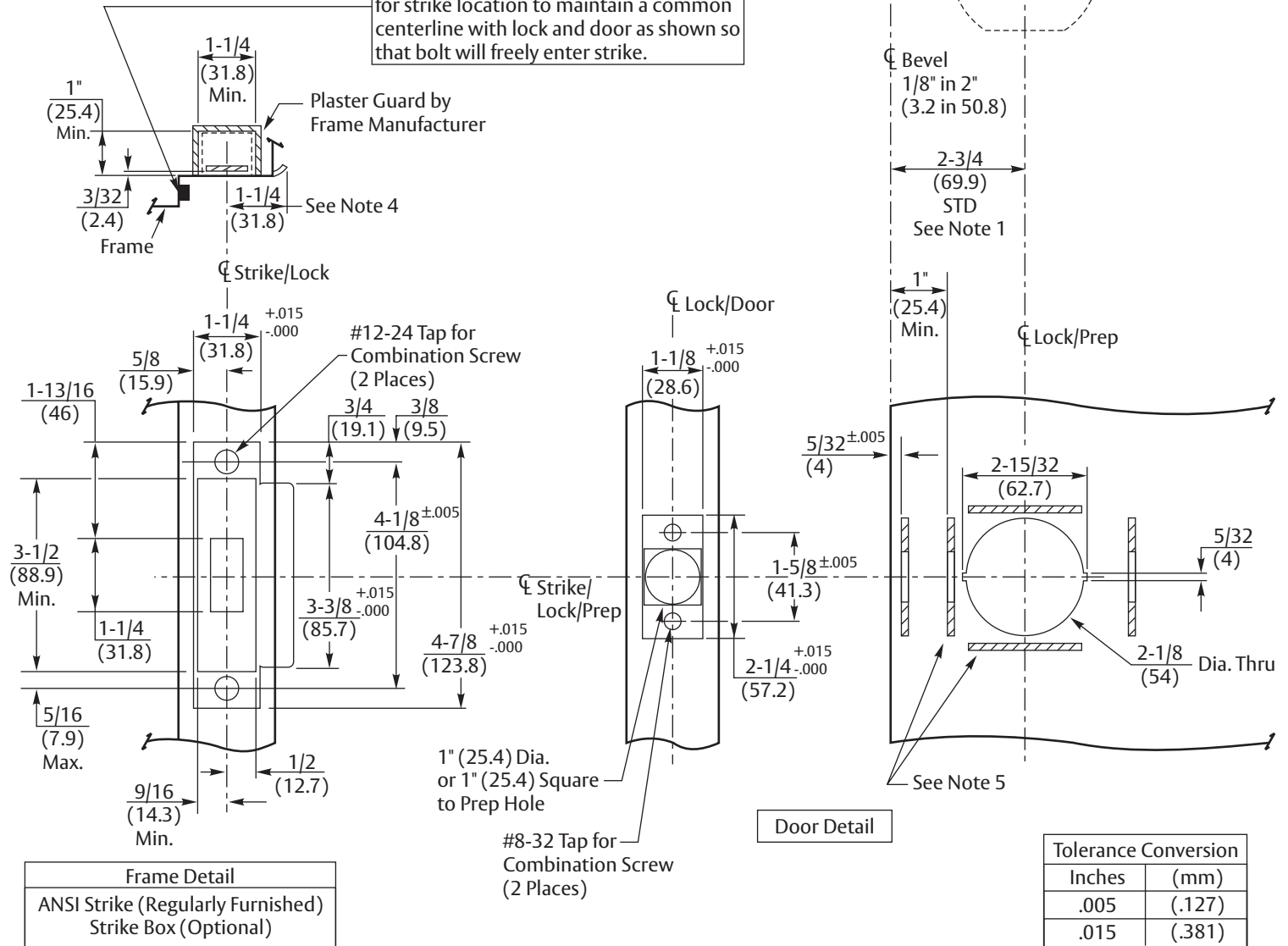


**TRADEMARK  
HARDWARE**  
WORLD OF QUALITY HARDWARE  
WWW.TMHW.COM

#### Notes:

1. Backset is measured from centerline of bevel which is centerpoint of door thickness.
2. Door prep with 2-3/4" (70) backset meets ANSI/BHMA A156.115 standards for steel doors and ANSI/BHMA A156.115W standards for wood doors.
3. Dimensions given in inches and (mm).
4. 1-1/4" (32) strike lip suits frame for 1-3/4" (45) thick door. Lip will vary for other door thicknesses.
5. Horizontal and vertical reinforcements are required by metal door manufacturers to properly support lock and latch case.

**Caution: Door and Frame Manufacturers**  
When door gasketing or silencers are used, proper allowances must be made for strike location to maintain a common centerline with lock and door as shown so that bolt will freely enter strike.



### 5400CK Series Grade 1 Knob Locks Wood or Metal Door Preparation (See ANSI/BHMA A156.115)



1-800-438-1951  
www.yalelocks.com

TEMPLATE NUMBER

7150-0117

DATE

03-16