



6400LN Series Monolock Replacement Heavy-Duty Cylindrical Lever Lockset Installation Instructions



TRADEMARK
HARDWARE
WORLD OF QUALITY HARDWARE
WWW.TMHARDWARE.COM

IMPORTANT: The accuracy of the door preparation is critical for the proper functioning and security of this lever handle lock. Misalignment can cause premature wear and tear and a lessening of security.

Tools Required

- 2-1/8" (54mm) hole saw
- 1" (26mm) boring bit
- 5/16" (8mm) drill bit
- 7/64" (2.5mm) drill bit
- chisel & hammer
- #2 phillips screw driver
- handle removal tool (supplied)
- 3/8" or 1/2" drill

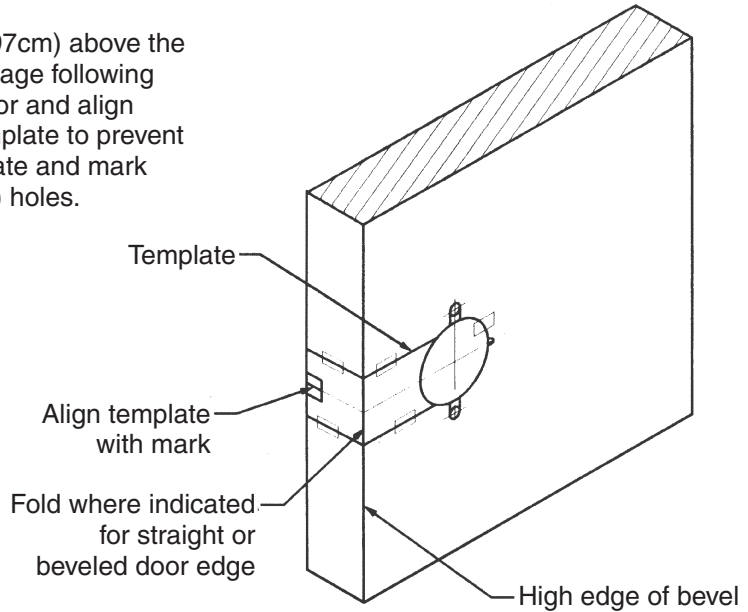
Attention Installer

Installation of cylindrical locks and latches must be through bolted in all doors. If installation instructions are not followed this may result in damage to the lock and void the factory warranty. Any retrofit or other field modification to a fire rated opening can potentially impact the fire rating of the opening, and Yale Locks & Hardware makes no representations or warranties concerning what such impact may be in any specific situation. When retrofitting any portion of an existing fire rated opening, or specifying and installing a new fire-rated opening, please consult with a code specialist or local code official (Authority Having Jurisdiction) to ensure compliance with all applicable codes and ratings.

1. Mark door.

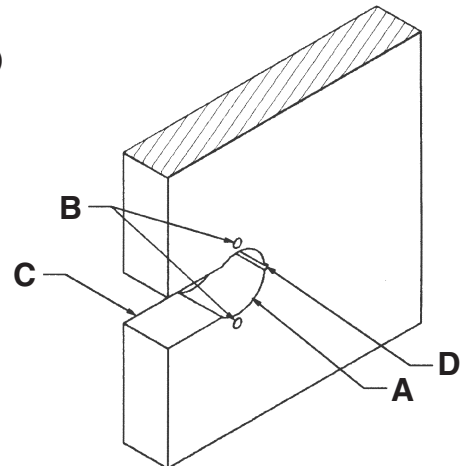
Mark edge of door at centerline of lock (38" (97cm) above the floor is typical). Cut template from bottom of page following outside profile. Fold template over edge of door and align template with mark on edge of door. Tape template to prevent shifting during marking. Trace edges of template and mark centers of 2-1/8" (54mm) and (2) 5/16" (8mm) holes.

WARNING
This product can expose you to lead which is known to the state of California to cause cancer and birth defects or other reproductive harm. For more information go to www.P65warnings.ca.gov.
08/2018

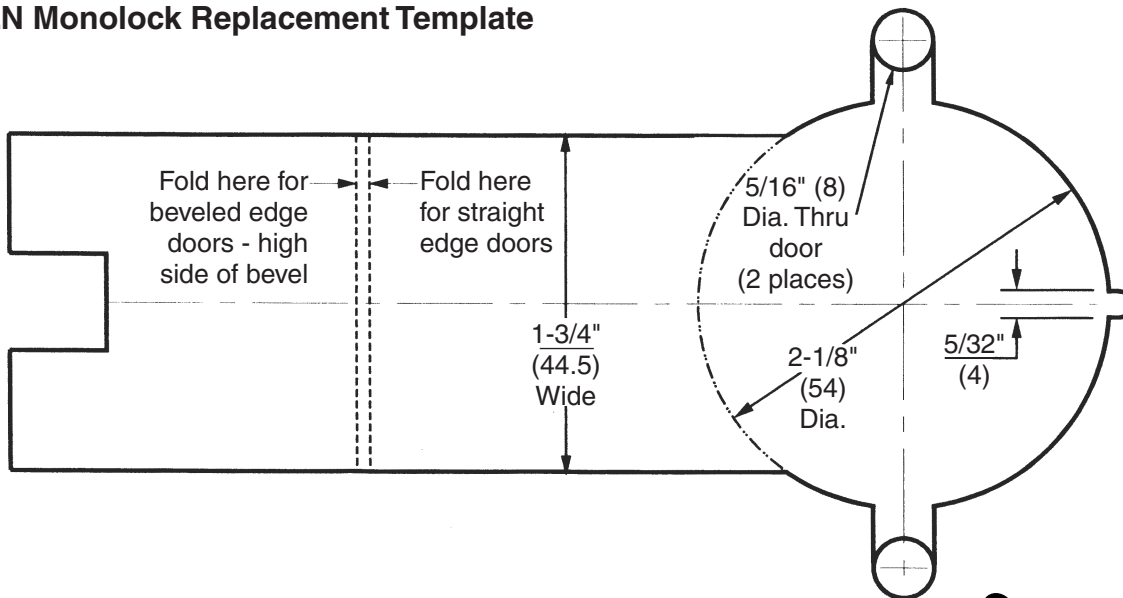


2. Drill door.

A. Drill 2-1/8" (54mm) dia. Hole (A) and (2) 5/16" (8mm) holes (B) thru door. Cut 1-3/4" (44.5) slot (C) through from edge of door into 2-1/8" (54mm) hole. Cut notch (D) at back of 2-1/8" (54mm) hole inside and outside.



6400LN Monolock Replacement Template



CUT LINE

3. Disassemble lock.

Remove inside lever/rose scalp, through bolts and rose assembly.

4. Install lockbody/latch.

Fit lockbody/latch assembly in door, aligning latch bevel with door bevel. If required, latch may be reversed. Replace rose plate and secure with two (2) #6 screws. See caution.

5. Install inside components.

Install inside rose assembly using through bolts and tighten securely. To complete the installation, replace rose scalp and lever.

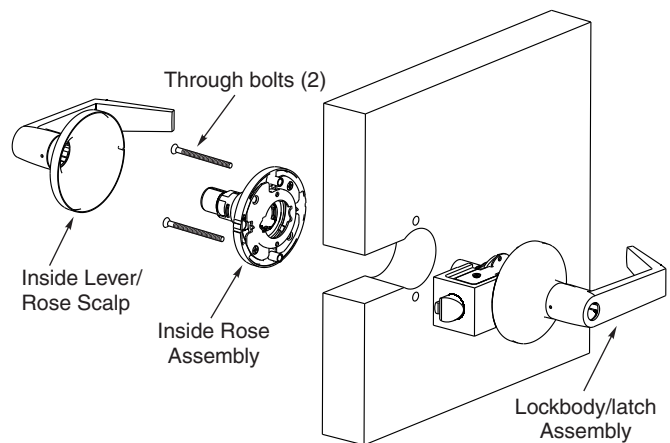
A. Slide inside rose assembly onto lock body.

NOTE: The groove must line up with drive lug on spindle. Fasten rose assembly with two through bolts.

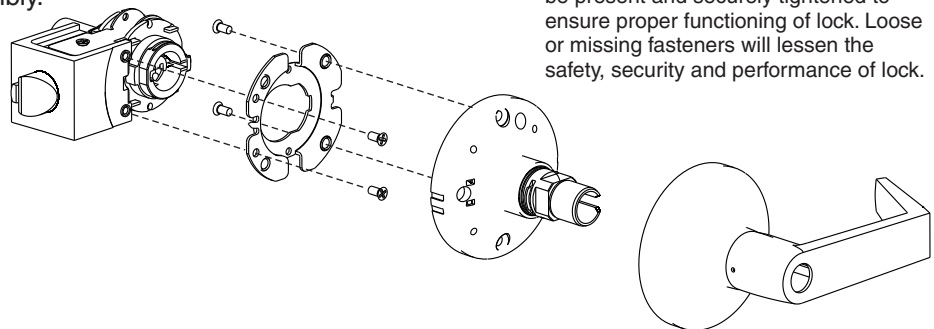
B. Place rose scalp on rose assembly.

C. Install lever handle.

Snap in place, pull to insure properly seated.



CAUTION: All fasteners in step 4 must be present and securely tightened to ensure proper functioning of lock. Loose or missing fasteners will lessen the safety, security and performance of lock.



Yale Locks & Hardware

Product Support Tel 800.438.1951 • www.yalelocks.com

Yale Locks & Hardware is a division of Yale Security Inc., an ASSA ABLOY Group company.

Yale® is a registered trademark of Yale Security Inc., an ASSA ABLOY Group company. Other products' brand names may be trademarks or registered trademarks of their respective owners and are mentioned for reference purposes only. These materials are protected under U.S. copyright laws. All contents current at time of publication. Yale Security Inc. reserves the right to change availability of any item in this catalog, its design, construction, and/or its materials.

Copyright © 1997, 2012, Yale Security Inc., an ASSA ABLOY Group company.

All rights reserved. Reproduction in whole or in part without the express written permission of Yale Security Inc. is prohibited.