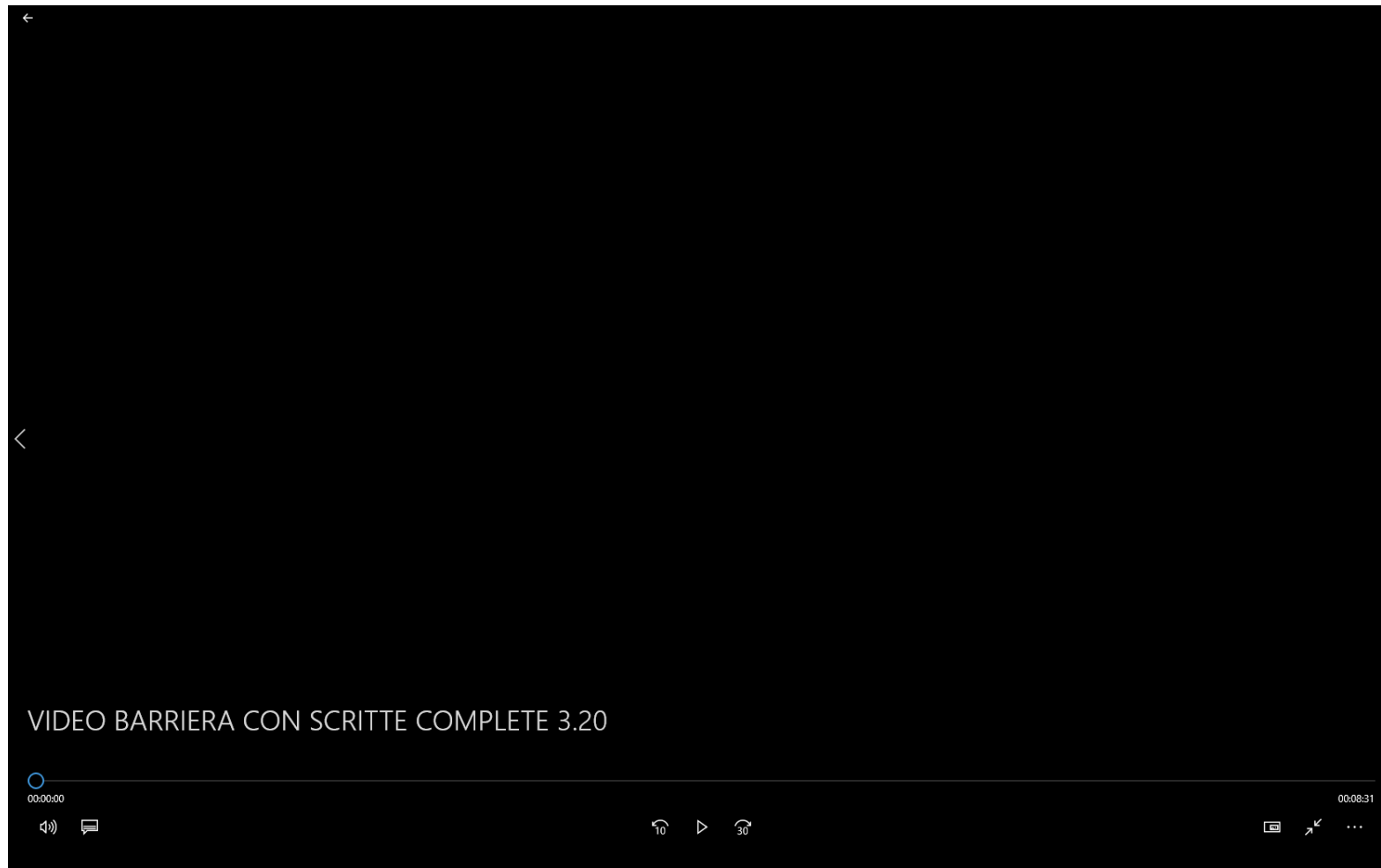


- RAPID ANTI-FLOODING BARRIER INSTALLATION MOVIE 3.20



- VIDEOGUIDE. RAPID Anti-flooding Barrier limits the damage. Installation videoguide.



- Take the size and mark the desired barrier installation place at least 13 cm from any obstacle in the compartment from the outside.



Segnare la **posizione** desiderata per l'installazione della barriera ad almeno 13 cm da qualsiasi ostacolo nel vano dall'esterno.

- Put it perfectly plumb and trace the profile outside in the shoulder.



- Drill through the sealing profile and insert a pin / dowel in each hole (excluding the last one). Drill all the holes.



- Clean perfectly the wall and the door sill.



- Insert the suitable dowels into the holes, on the previous perforated surface.



- Clean with a cloth soaked in nitro diluent on the surfaces where the adhesive sealant will be extruded.



- Extrude the adhesive sealant suitable for this surface on the profile, with a proper & continuous bead diameter, for the full profile length.



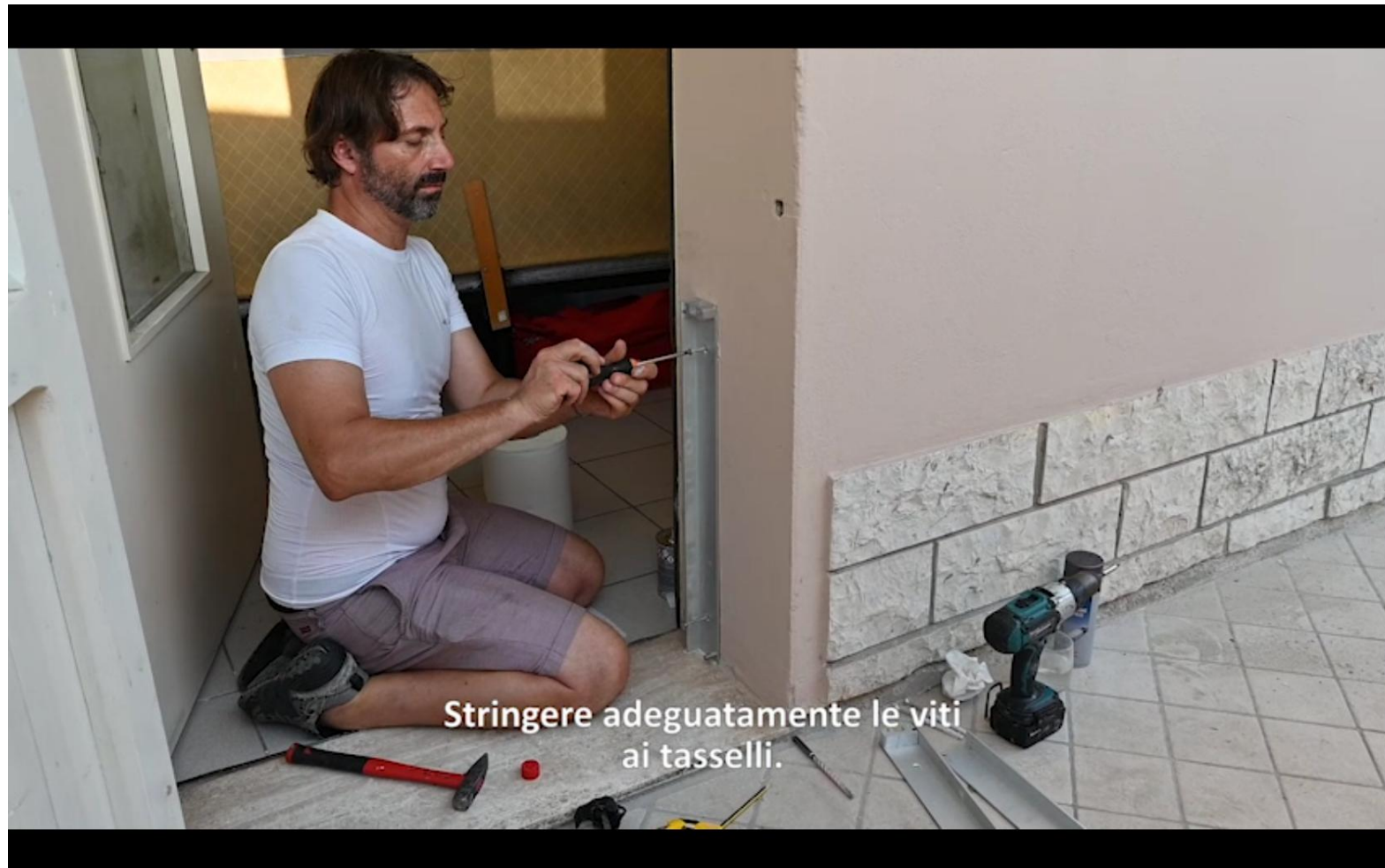
- Extrude the adhesive sealant on the underside profile.



- Place the profile and insert the proper screw in each dowel.



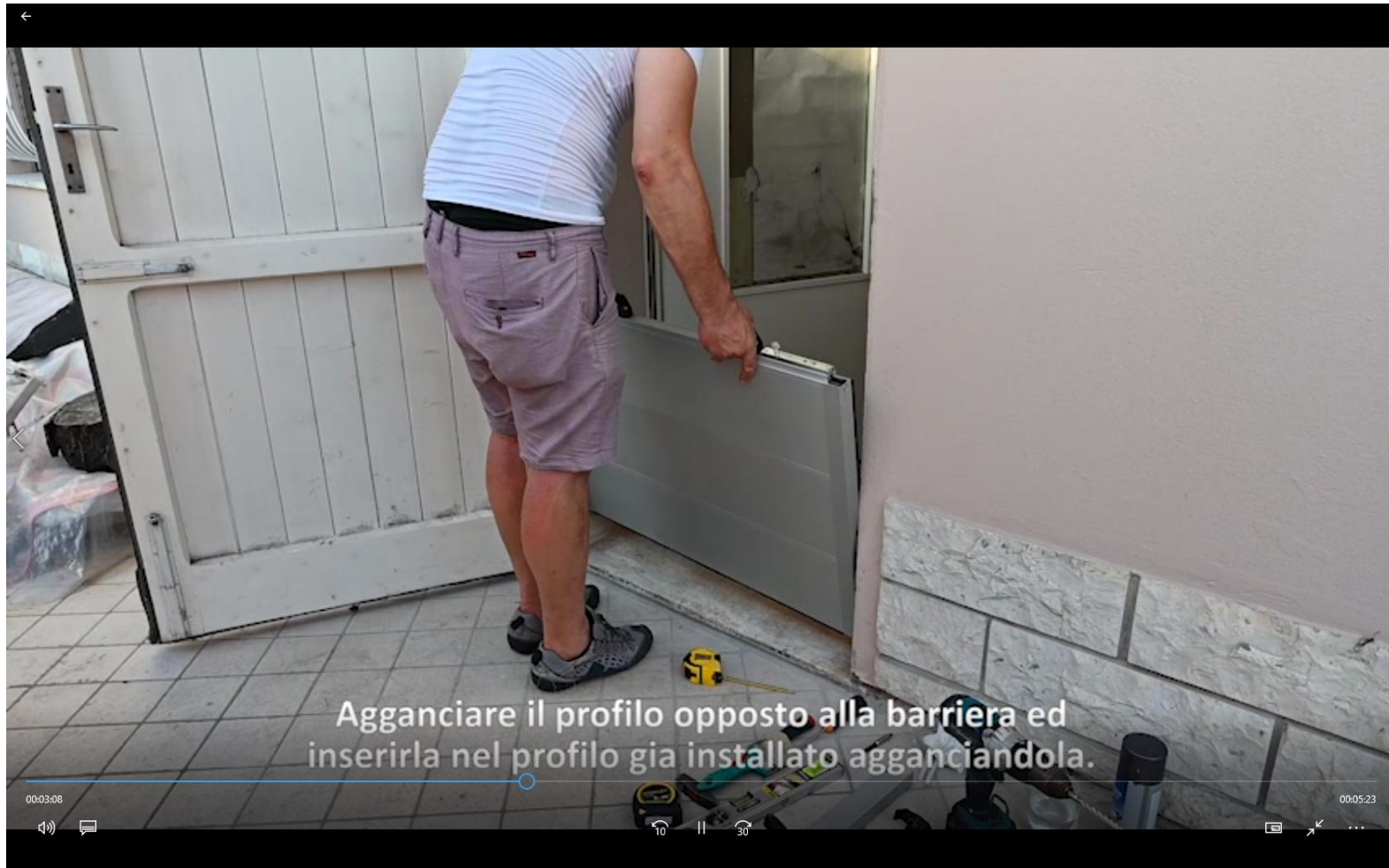
- Tighten the screws to the dowels.



- Remove immediately the excess sealant using the supplied caulk removal tool.



- Hook the opposite profile to the barrier. Insert the barrier in the profile already installed, hooking it.



- Trace the profile outside into the wall.



- Check that the mark is perfectly plumb.



- Repeat the drilling operations previously performed in the other profile.



- Clean perfectly the wall and the door sill.



- Insert the suitable dowels into the holes, on the previous perforated surface.



- Clean with a cloth soaked in nitro diluent on the surfaces where the adhesive sealant will be extruded.



Pulire bene sfregando uno strofinaccio imbevuto con diluente alla nitro
nelle superfici in cui andrà estruso il sigillante adesivo adeguato.

- Extrude the adhesive sealant suitable for this surface on the profile, with a proper & continuous bead diameter, for the full profile length.



Estrudere il sigillante adesivo adeguato alla superficie sul profilo con diametro del "cordone" adeguato e continuativo per tutta la lunghezza.

- Extrude the adhesive sealant on the underside profile.



- Place the profile and insert the proper screw in each dowel.



- Tighten the screws to the dowels.



- Remove immediately the excess sealant using the supplied caulk removal tool.



- Check that the barrier is blocked under pressure in the appropriate seats.



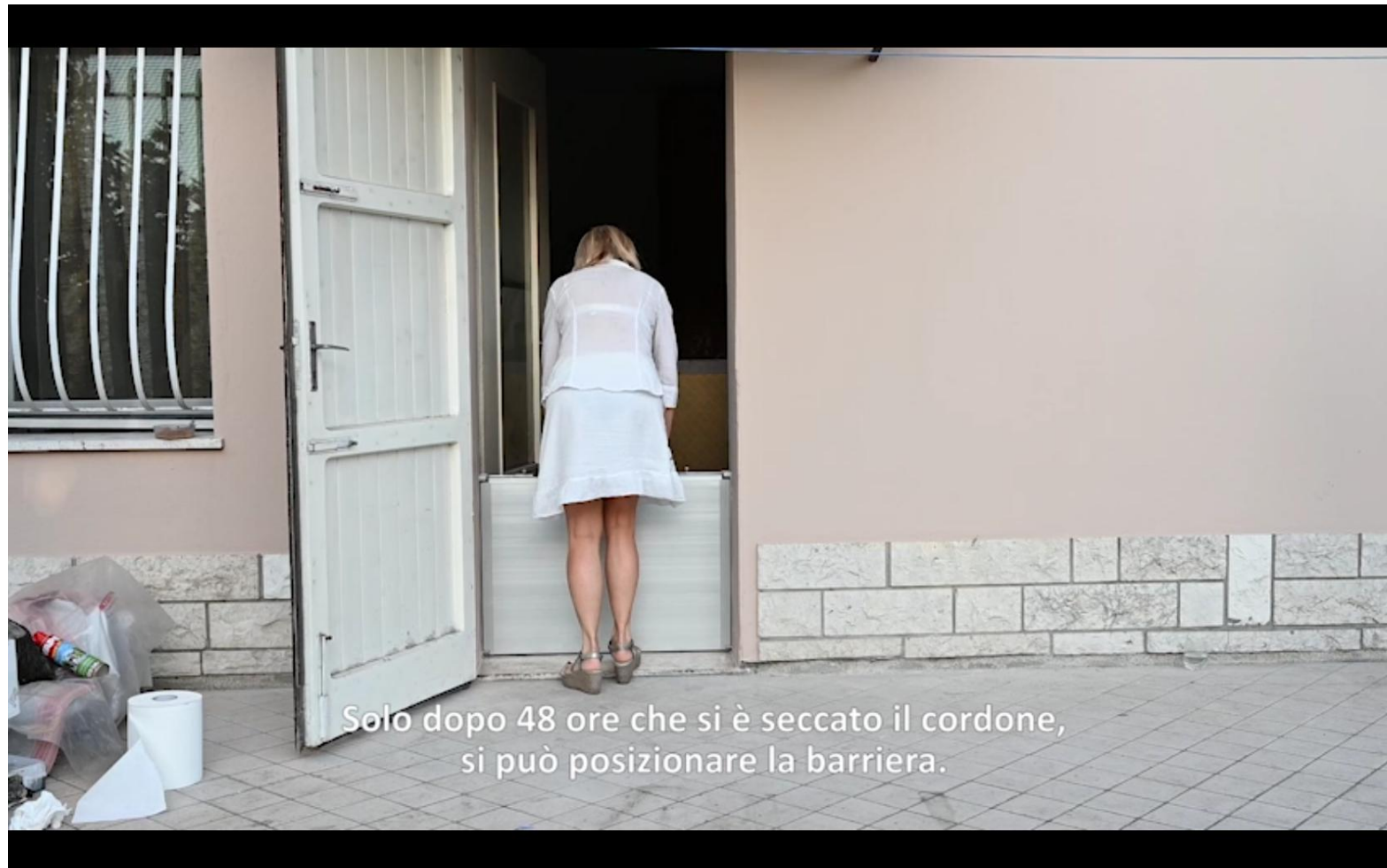
- Tape the adhesive 4mm from the profiles outsides. Extrude the appropriate sealant, following the sealant instructions.



- Extrude a bead-sealing with a diameter greater than 10mm. Remove the excess on the door threshold, using the supplied caulk removal tool, following the nozzle, at 45° against the two surfaces.



- Place the barrier after 48 hours, once the extruded-bead sealing is dry.



- Optional: cover with design function.

