



TRADEMARK
HARDWARE

**NORTON
RIXSON**

ASSA ABLOY



Experience a safer
and more open world

Approved

2022-06-13



Quick Start Guide

6200 Series Full Feature Low Energy Operator

Regulatory Information

FCC:

Class B Equipment

This equipment has been tested and found to comply with the limits for a Class B digital device, pursuant to Part 15 of the FCC Rules. These limits are designed to provide reasonable protection against harmful interference in a residential installation. This equipment generates, uses and can radiate radio frequency energy and, if not installed and used in accordance with the instructions, may cause harmful interference to radio communications. However, there is no guarantee that interference will not occur in a particular installation. If this equipment does cause harmful interference to radio or television reception, which can be determined by turning the equipment off and on, the use is encouraged to try to correct the interference by one or more of the following measures:

- Reorient or relocate the receiving antenna.
- Increase the separation between the equipment and receiver.
- Connect the equipment into an outlet on a circuit different from that to which the receiver is connected.
- Consult the dealer or an experienced radio/TV technician for help.

This device complies with Part 15 of the FCC Rules. Operation is subject to the following two conditions: (1) This device may not cause harmful interference, and (2) this device must accept any interference received, including interference that may cause undesired operation.

Warning:

Changes or modifications to this device may void the user's authority to operate the equipment.

Industry Canada:

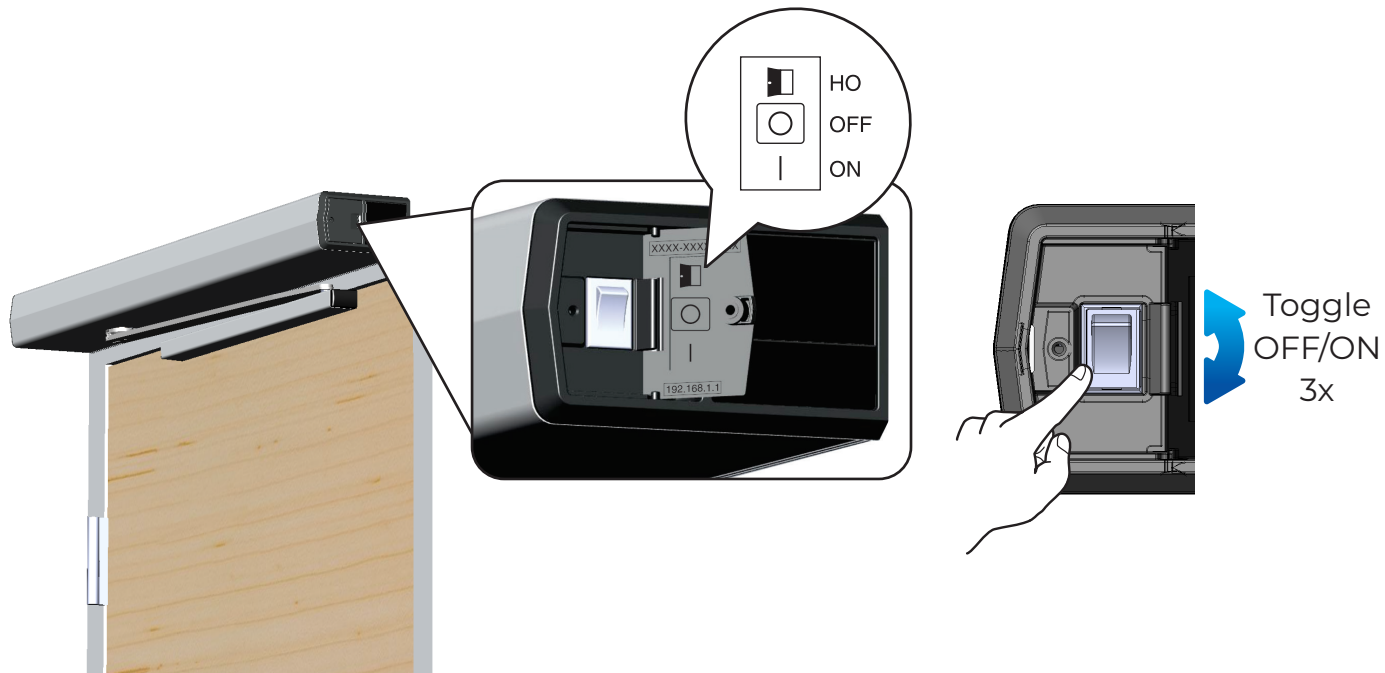
This Class A digital apparatus meets all requirements of the Canadian Interference Causing Equipment Regulations.

Cet appareillage numérique de la classe A répond à toutes les exigences de l'interférence canadienne causant des règlements d'équipement.

Declaración de México:

La operación de este equipo está sujeta a las siguientes dos condiciones: (1) es posible que este equipo o dispositivo no cause interferencia perjudicial y (2) este equipo o dispositivo debe aceptar cualquier interferencia, incluyendo la que pueda causar su operación no deseada.

Turn On Operator WiFi

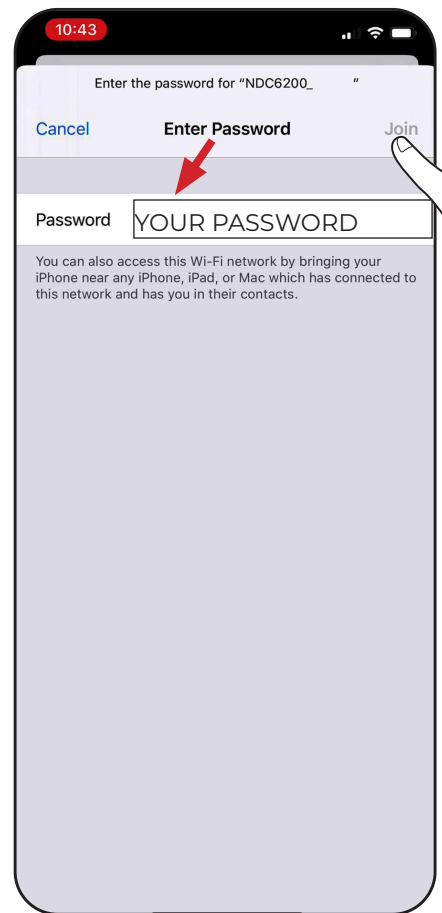
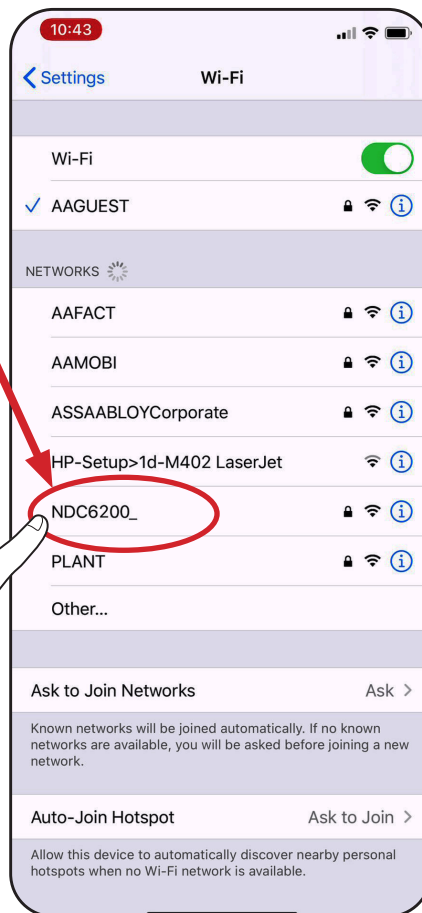
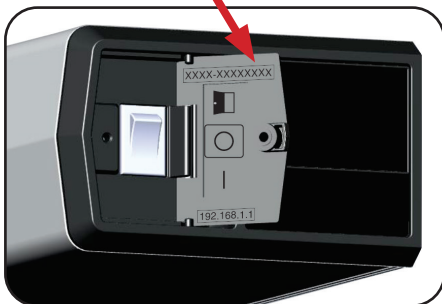


Connecting to the Wireless Network

- 1 Open WiFi network on your smart device

NDC6200_ YOUR SERIAL NUMBER

XXXX-XXXXXXXX
Serial # Password

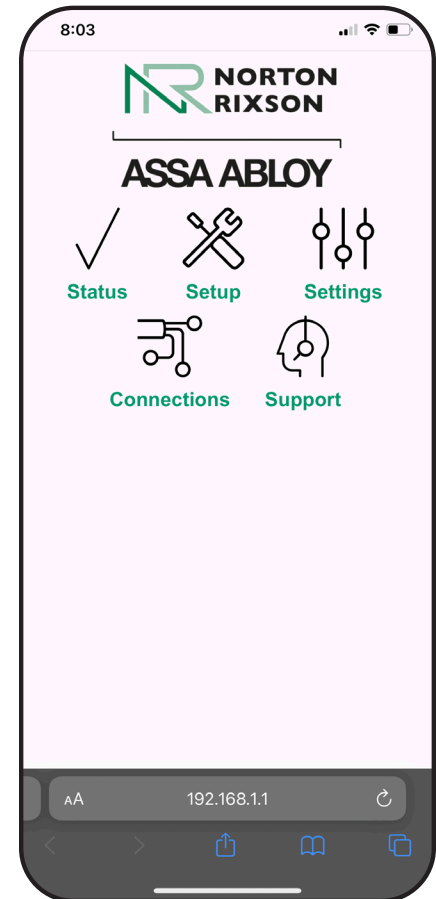
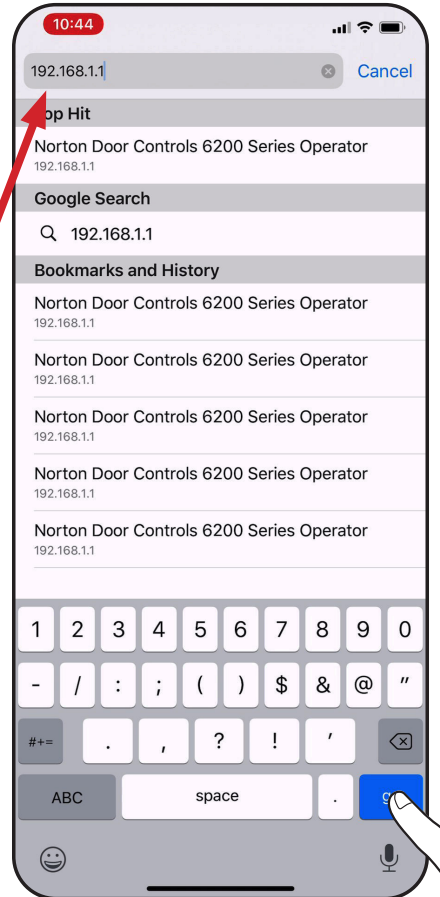


Connecting to the Wireless Network

2 Open Internet Browser



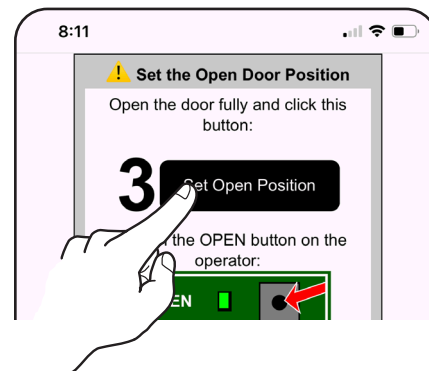
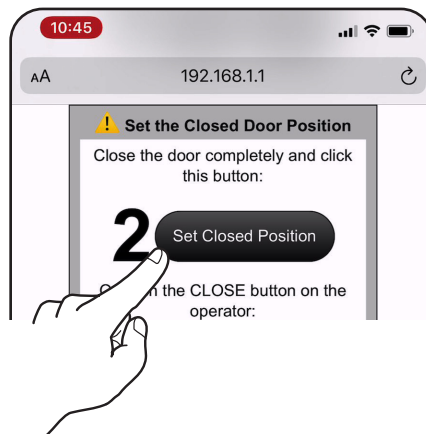
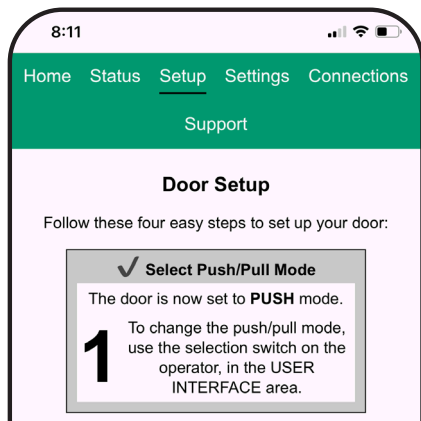
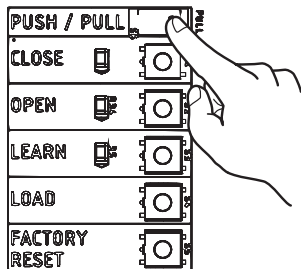
Enter IP: 192.168.1.1



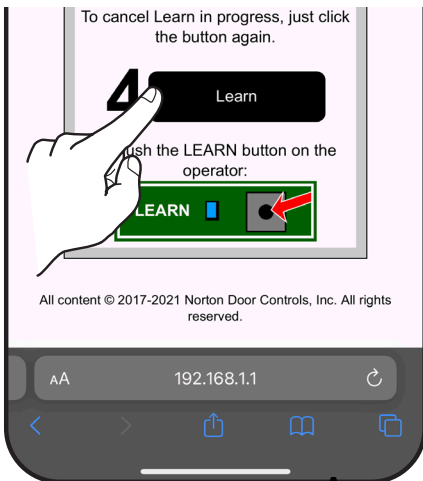
Setup

Select arm type on control board.

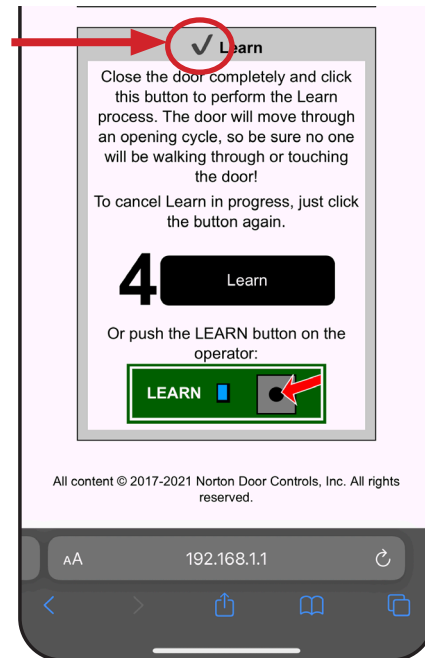
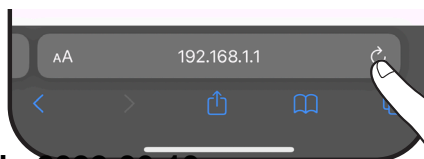
← **PUSH** **PULL** →



Setup



Reload this page



Continue to Settings



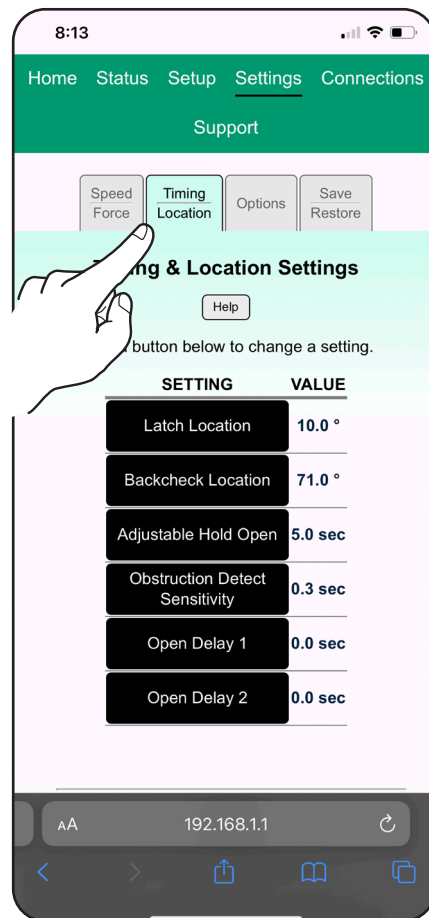
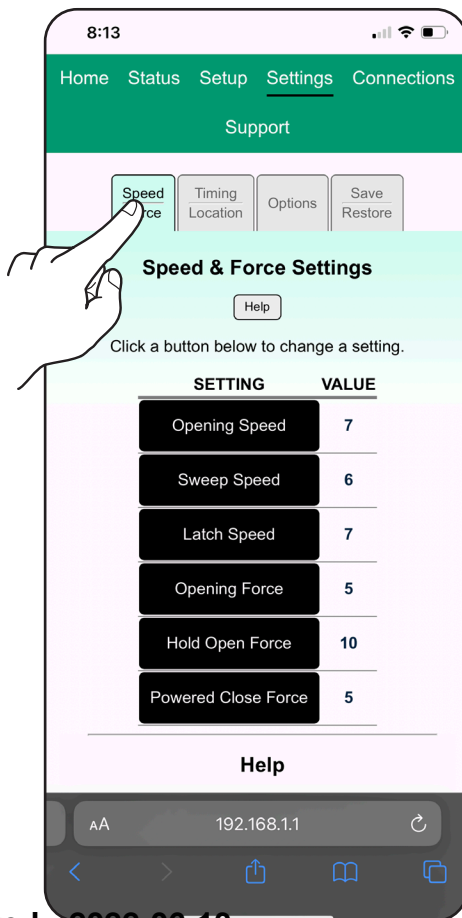
Settings: Speed/Force & Timing/Location



Speed/Force and Timing/Location settings must be adjusted to meet ANSI BHMA A159.19 (American National Standard for Power Assist and Low Energy Power Operated Doors) requirements for opening and closing based on door weight and width.



Setup complete!
The following pages are for additional information.

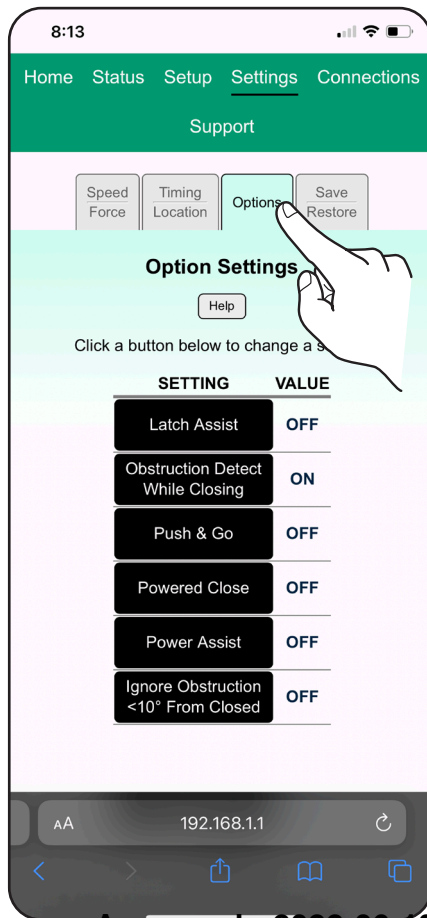


Settings: Options



Settings: Options
and **Connections**
vary by
application.

You can skip
these sections if
you do not need
to customize
control of your
operator.



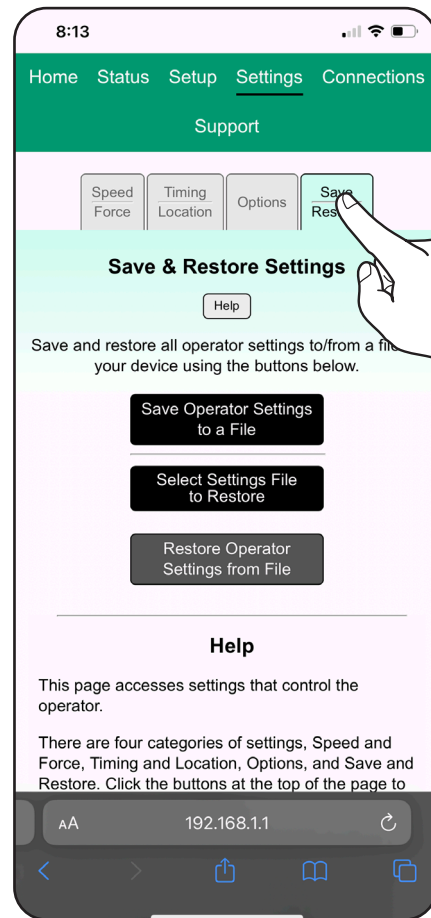
Settings: Save/Restore



Settings: Save/Restore is used to
transfer settings to other operators
OR to restore
customized
settings from a
saved file.

Setup and
settings for this
operator are
saved as you
go through the
menus.

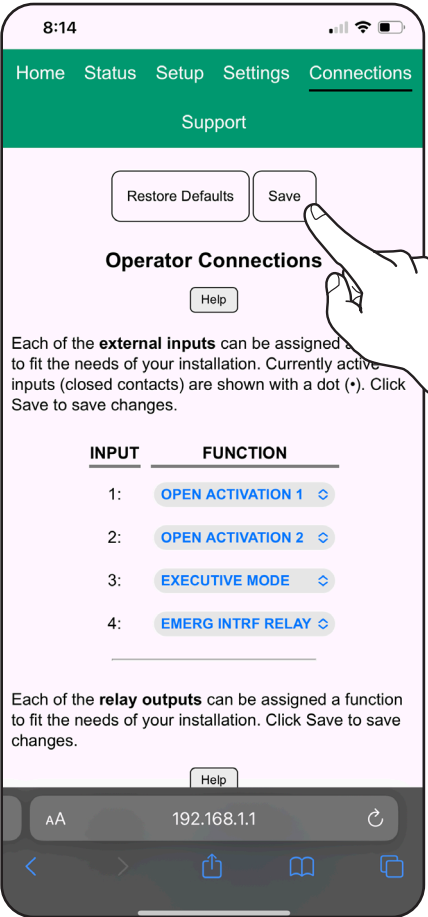
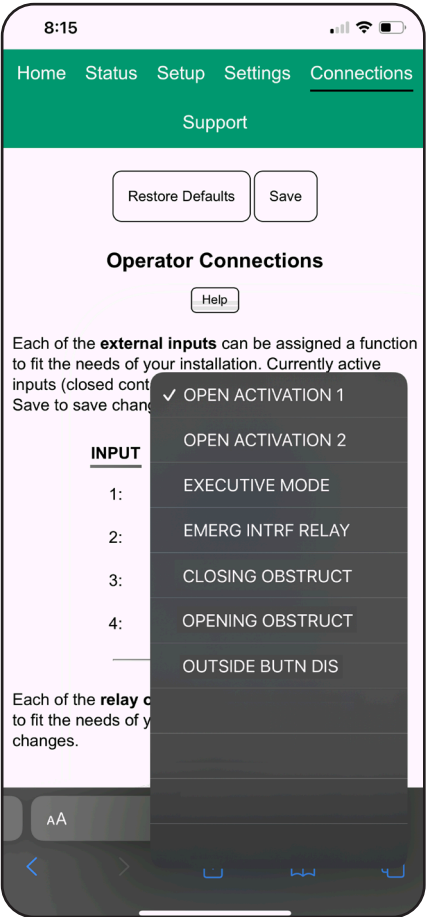
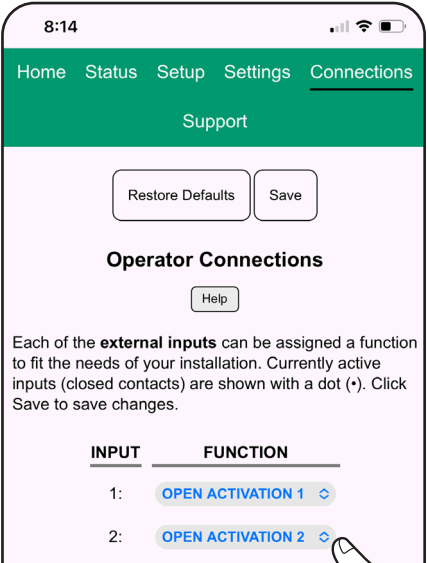
See
Programming
Instructions
80-9363-0022-020
for details.



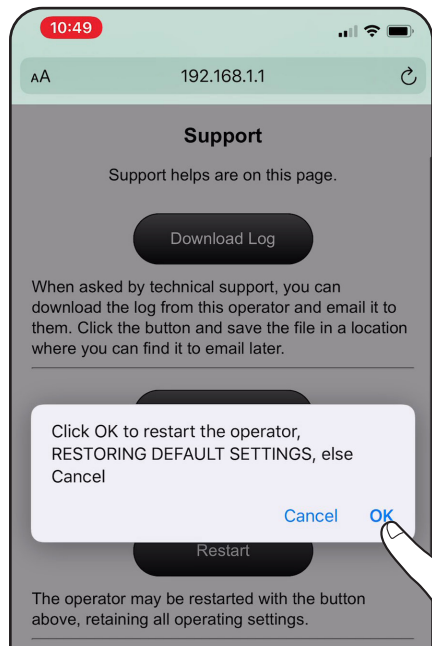
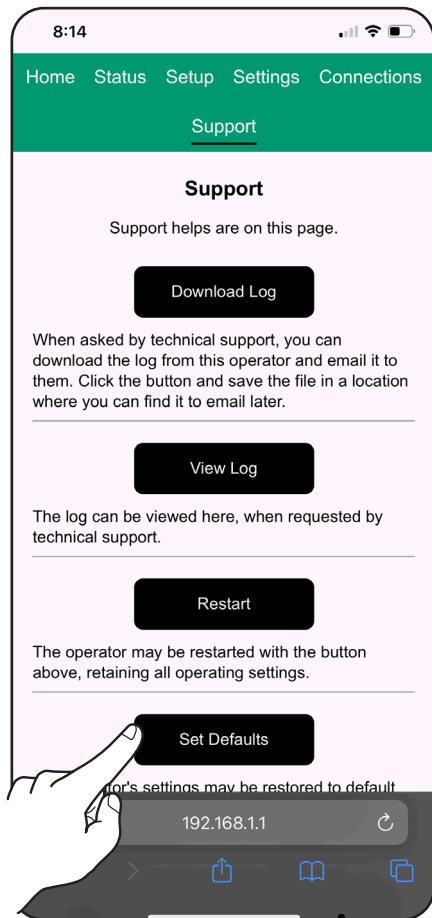
Connections



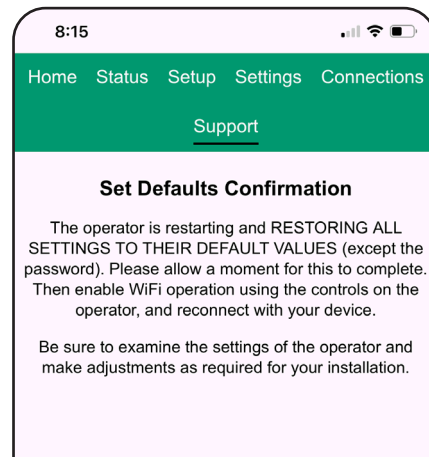
External inputs must be connected.
(See separate Programming
Instructions 80-9363-0022-020 for
details.)



Support: Restoring Factory Default Settings



All settings will reset to factory default.



For full programming instructions and wiring diagrams, refer to Programming Manual 80-9363-0022-020 included with your operator or online at nortonrixson.com

The ASSA ABLOY Group is the global leader in access solutions. Every day we help people feel safe, secure and experience a more open world.



Technical Product Support:
Monroe, NC 28112 USA
Phone: 877.974.2255 ext: 2
Techsupport.NortonRixson@assaabloy.com
NortonRixson.com

Copyright © 2022, ASSA ABLOY Accessories and Door Controls Group, Inc.
All rights reserved. Reproduction in whole or in part without the express written
permission of ASSA ABLOY Accessories and Door Controls Group, Inc. is prohibited.

80-9363-0021-020 Rev1 03/22

Approved 2022-06-13