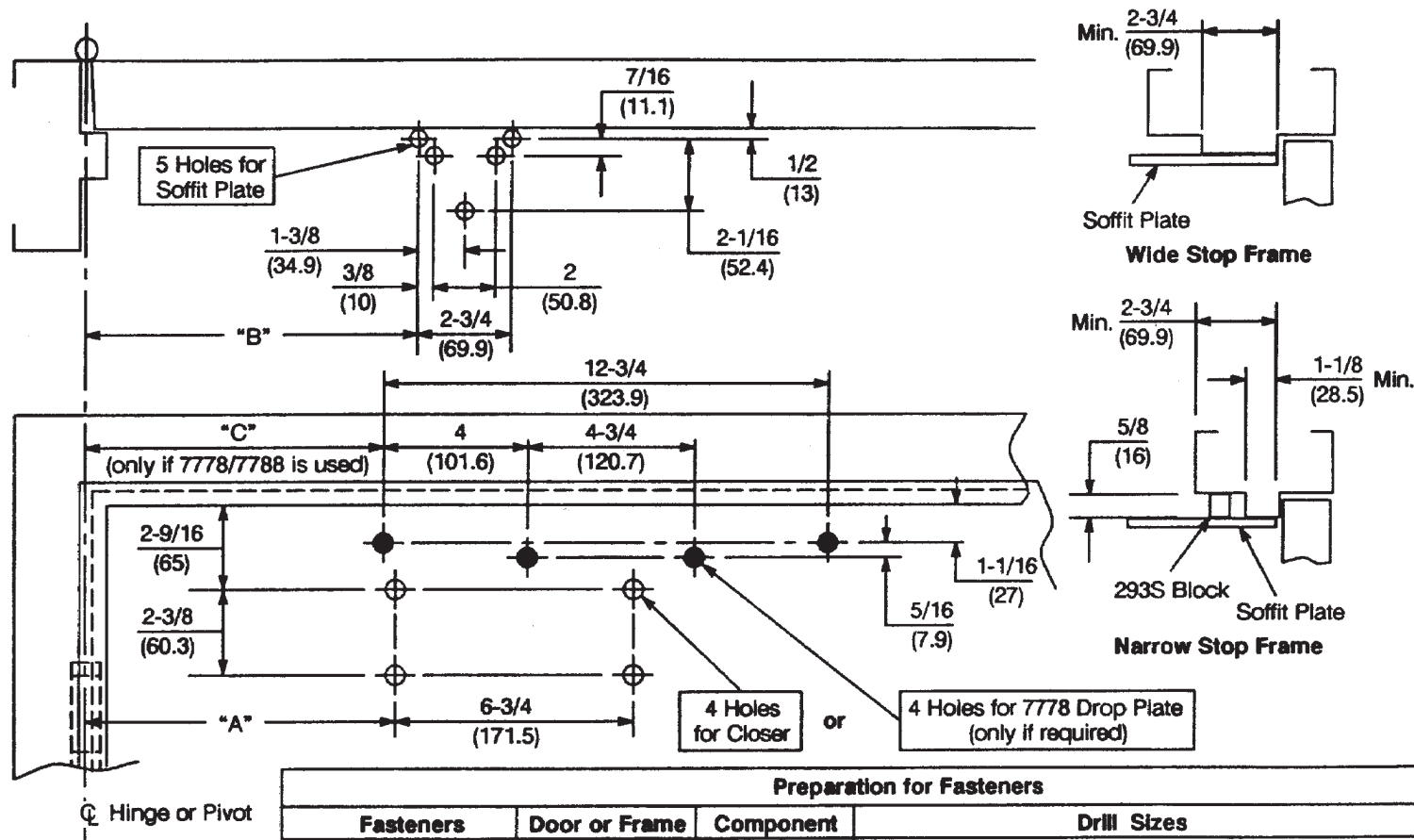


Caution: Door swing may be limited by door, frame, wall or hardware conditions.

Notes:

1. Do not scale drawing.
2. Left hand door shown.
3. Dimensions are in inches (mm).
4. Hollow metal doors require channel or box type reinforcement when thru bolt mount is specified.
5. Minimum thickness recommended for reinforcements in hollow metal doors and frames: .1046" (2.66mm) unless otherwise noted.
6. Hold open function, "T" suffix, is not permitted in a fire-door assembly.
7. Maximum width hinges for this template are 5" (127mm)



Door Opening	Dim. "A"	Dim. "B"	Dim. "C"
85°	10-1/8 (257)	10-5/8 (270)	9-7/8 (251)
90°	9-1/4 (235)	9-3/4 (248)	9 (229.6)
95°	8-5/8 (219)	9-1/8 (232)	8-3/8 (213)
100°	7-7/8 (200)	8-3/8 (213)	7-5/8 (194)
105°	7-3/8 (187)	7-7/8 (200)	7-1/8 (181)
110°	6-3/4 (171)	7-1/4 (184)	6-1/2 (165)

Preparation for Fasteners			
Fasteners	Door or Frame	Component	Drill Sizes
#14 type "A" S.M. screw Arm: 1-1/4" (32mm) Closer: 2-3/4" (70mm)	Wood	Arm	7/32" (5.50mm)
1/4-20 machine screw	Metal	Arm	drill: #7 (.201") tap: 1/4-20
Sex nuts and bolts (SNB)	Hollow Metal	Closer	9/32" (7.00mm) thru; 3/8" (9.50mm) on door or transom face opposite to closer
	Aluminum or Wood		3/8" (9.50mm) thru
Thru bolts and grommet nuts (TBGN)	All	Closer	9/32" (7.00mm) thru; 3/8" (9.50mm) dia. x 3/8" (9.50mm) deep on door or transom face opposite to closer



TRADEMARK
HARDWARE

**CLP-7570, CLP-7770 CloserPlus® Arm Security Door Closer or
CPS-7570, CPS-7770 CloserPlus Spring™ Arm Security Door Closer
Parallel Arm Application With or Without 7778 Drop Plate
Arm Function - Stop Only of Stop & Hold Open ("T" Suffix)
Power Size 0 for 7570; 2, 3, 4, 5, or 6 for 7770**

**NORTON
RIXSON**

ASSA ABLOY

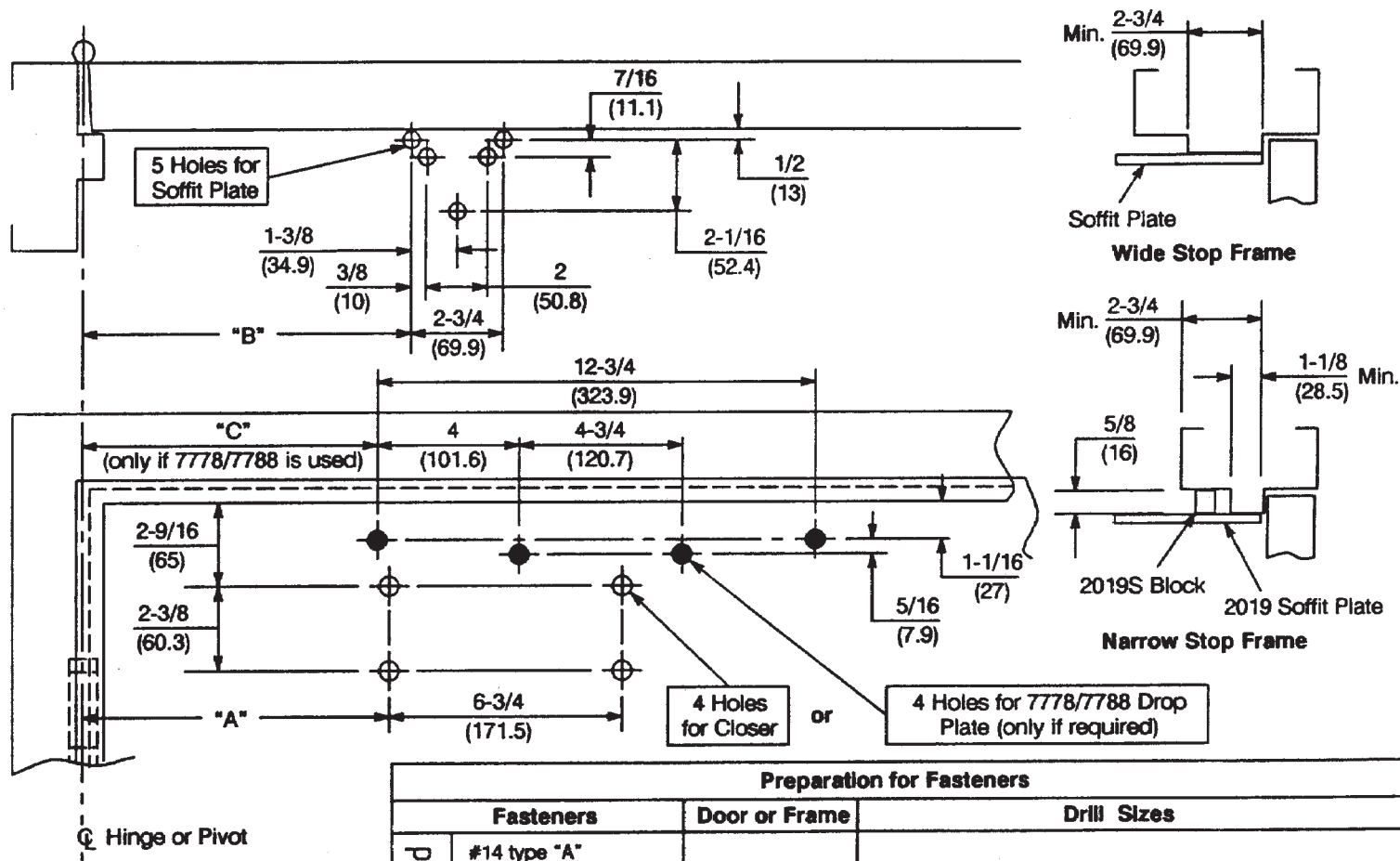
TEMPLATE NUMBER	REV	DATE
7377-0625	3	12/21

Approved 2022-08-01

Caution: Door swing may be limited by door, frame, wall or hardware conditions.

Notes:

1. Do not scale drawing.
2. Left hand door shown.
3. Dimensions are in inches (mm).
4. Hollow metal doors require channel or box type reinforcement when thru bolt mount is specified.
5. Minimum thickness recommended for reinforcements in hollow metal doors and frames: .1046" (2.66mm) unless otherwise noted.



Door Opening	Dim. "A"	Dim. "B"	Dim. "C"
To 100°	8-5/8 (219)	9-1/8 (232)	8-3/8 (213)
101° to 120°	7-7/8 (200)	8-3/8 (213)	7-5/8 (194)
121° to 180°	6-3/4 (171)	7-1/4 (184)	6-1/2 (165)

Maximum hinge width 5" (127mm) for doors swinging beyond 150°.

Preparation for Fasteners			
	Fasteners	Door or Frame	Drill Sizes
Standard	#14 type "A" S.M. screw Arm: 1-1/4" (32mm) Closer: 2-3/4" (70mm)	Wood	7/32" (5.50mm)
	1/4-20 machine screw	Metal	drill: #7 (.201") tap: 1/4-20
Optional	Sex nuts and bolts	Hollow Metal	9/32" (7.00mm) thru; 3/8" (9.50mm) on door or transom face opposite to closer
		Aluminum or Wood	3/8" (9.50mm) thru
	Thru bolts and grommet nuts	All	9/32" (7.00mm) thru; 3/8" (9.50mm) dia. x 3/8" (9.50mm) deep on door or transom face opposite to closer



TRADEMARK
HARDWARE

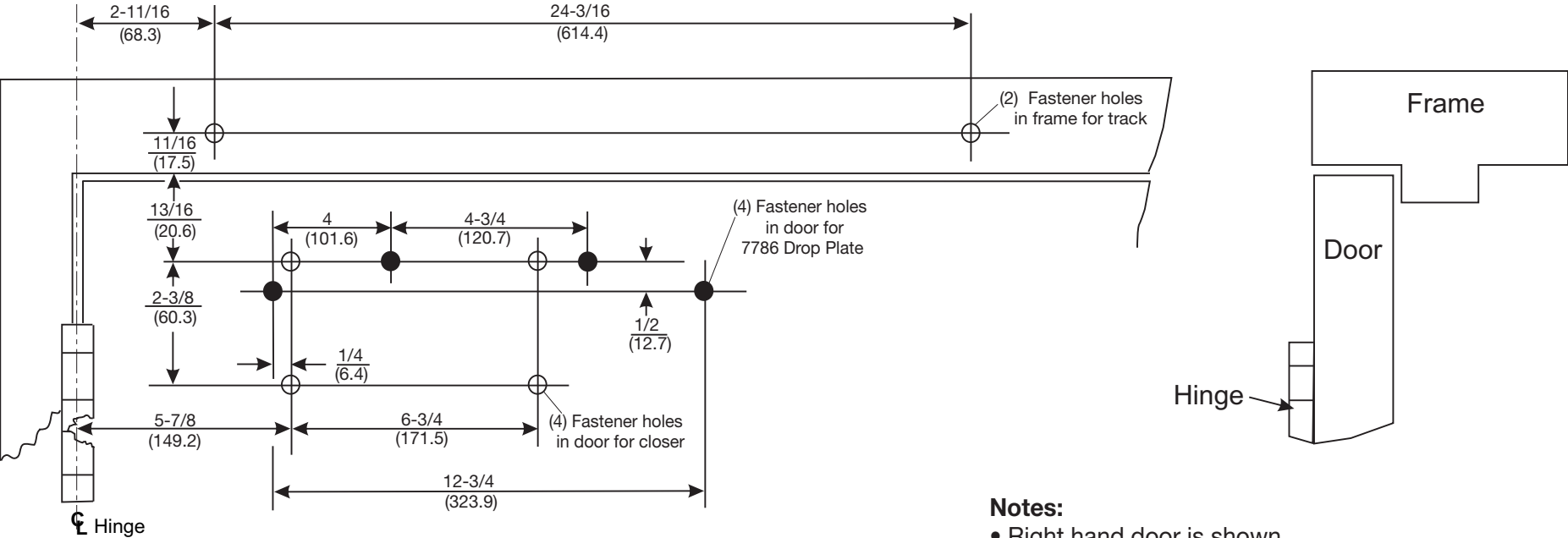
PR7570 and PR7770 Series Security Door Closer
With or Without 7788 Drop Plate or
Parallel Rigid Arm Non-Hold Open Installation

**NORTON
RIXSON**

ASSA ABLOY

TEMPLATE NUMBER	REV	DATE
7377-0621	3	12/21

Approved 2022-08-01



Preparation for Fasteners		
Fasteners	Door or Frame	Drill Sizes
1/4" -20 machine screw	Metal	drill: #7 (.201") tap: 1/4" -20
Sex-nuts and bolts (Optional)	Hollow Metal	9/32" (7.00mm) through 3/8" (9.50mm) door-face opposite to closer
	Aluminum or Wood	3/8" (9.50mm) through
Through-bolts and grommet-nuts (Optional)	All	9/32" (7.00mm) through; 3/8" (9.50mm) dia. x 3/8" (10mm) deep door- face opposite to closer

- Notes:**
- Right hand door is shown.
 - Do not scale drawing.
 - Minimum door width 26" (660.4mm).
 - .1046 (2.7mm) minimum thickness recommended for hollow metal door and frame reinforcement.
 - From centerline of hinge to end of track 27-3/8" (695.3mm).
 - Minimum ceiling clearance for track is 1-1/8" (26.6mm).
 - Closer mounted with sex nuts requires the use of door silencers.
 - Dimensions are given in $\frac{\text{inches}}{(\text{mm})}$
 - Maximum door opening:
 - 110°- recommended with cushion stop in track.
 - 180°- without cushion stop.
 - Use of auxiliary door stop is required to prevent damage to door, frame, and hinge.



7570ST & 7770ST
Security Door Closer with Security Slide Track
With or Without 7786 Drop Plate
For Use on Doors with 4" or 5" Wide Butt Hinges
Non-Hold Open, Hinge Mounted Installation

Approved 2022-08-01



TEMPLATE NUMBER	REV	DATE
7377-0670	3	12/21

