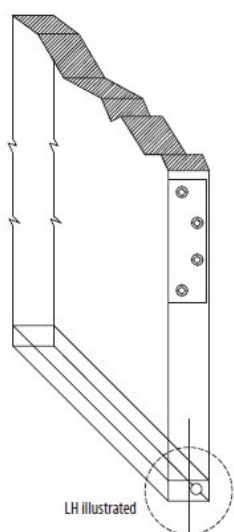




**Trademark
HARDWARE**

INSTALLATION GUIDE

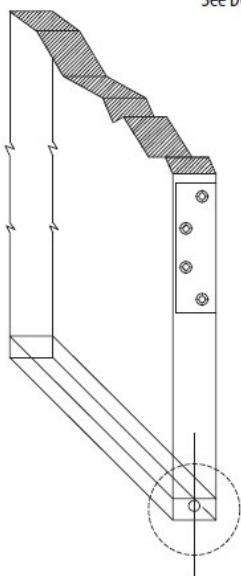
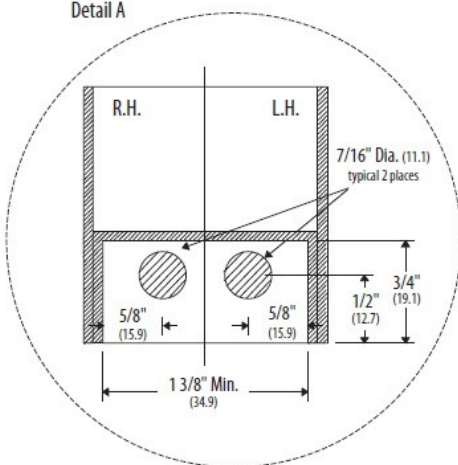
Automatic Door Bottom, Metal Door, Double Neoprene Handed



LH illustrated

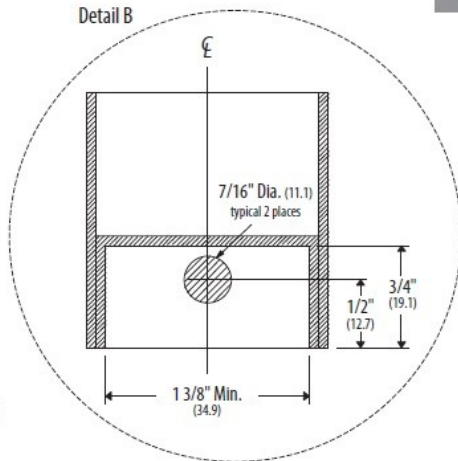
See Detail A

Detail A



See Detail B

Detail B

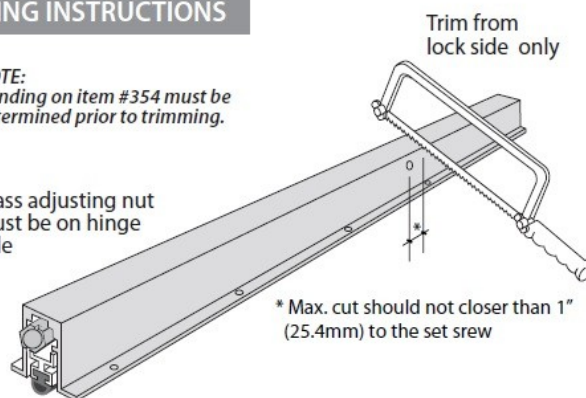


- 1 Cut the automatic door bottom to 3/16" (4.8) less than the full width of the door.
- 2 For part #354 - determine the door handing (L.H. or R.H.)
- 3 Drill a 7/16" (11.1) hole at the lower edge of the door on the hinge side. See illustration. This is to allow the extension of the adjusting nut to make contact with the jamb.
- 4 Install the automatic door bottom with the brass nut extended through the hole slightly.
- 5 Once the door is installed the final adjustment to the automatic door bottom can be made, by turning the brass nut, in or out, to control the drop. Maximum Drop is 1/2" (12.7).

TRIMMING INSTRUCTIONS

NOTE:
Handing on item #354 must be determined prior to trimming.

Brass adjusting nut must be on hinge side



FINAL ADJUSTMENT

After unit has been mounted turn adjusting nut in / out until closing door pushes neoprene seal down to make contact with floor/sill.