



**Trademark  
HARDWARE**

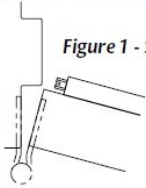
# INSTALLATION GUIDE

## Automatic Door Bottom

### Installation Instructions:

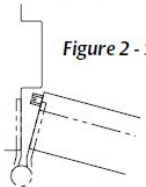
1. If the ADB is to be installed in a semi-mortise, prepare door according to the dimensions shown in the profile drawing on front of label.  
**NOTE:** If a door is fire labeled or of acoustical construction, semi-mortise preparation must be done by the door manufacturer or licensed machiner only.
2. Cut from end opposite actuating plunger only.
3. Field sizing:
  - a) ADBs less than 24" **CANNOT** be cut down
  - b) ADBs 24" and greater can be cut a maximum of 2"
4. When cutting, be sure that the drop bar is flush with the case on the plunger side and that the gasketing insert projects at least 1/8".
  - For semi-mortise installation, cut ADB to door width.
  - For surface mounted installation, cut ADB 1/8" less than the distance between the stops.
5. Adjust and trim the gasketing insert so that it projects at least 1/16" at each end of the drop bar and case.
6. With the actuating plunger at the hinge side, fasten the ADB to the door bottom with the screws provided, these Type AB screws will accommodate hollow metal and wood doors.
7. For surface mounted installation, the plunger contacts the stop (as shown in Figure 1).

*Figure 1 - Surface Mounted*



8. For semi-mortise mounted installation, the plunger contacts the rabbet (as shown in Figure 2).

*Figure 2 - Semi-Mortise Mounted*



9. The underside edge of the ADB case should be installed flush with the bottom of the door.
10. For wood jambs, a #10 x 1/2" flat head screw is furnished for installation at the point where the plunger contacts the jamb to prevent indenting.
11. Screw the actuating plunger in or out as required until the gasketing insert just touches the sealing surface when the door is closed.
12. It is only necessary to lightly compress the insert against the sealing surface to provide a good seal.
13. Further adjustments may be required for uneven surfaces.