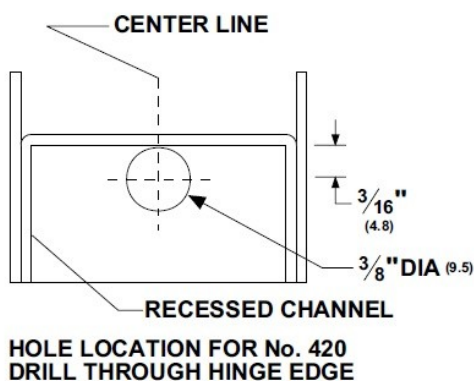


Automatic Door Bottom

1. Cut mortise in bottom of door.

NOTE: If a door is fire labeled or of special construction, mortise preparation must be done by the door manufacturer. The Pemko 420 requires a 3/8" diameter hole drilled through the hinge edge of the hollow metal door at the location shown below.



2. Cut from end opposite actuating plunger only.
3. Field sizing:
 - a) ADBs less than 24" **CANNOT** be cut down
 - b) ADBs 24" or greater can be cut a maximum of 2"
4. When cutting, be sure that the drop bar is flush with the case on the plunger side and that the gasketing insert projects at least 1/8".
5. Cut to door width, adjust gasket so that it projects at least 1/16" at each end.
6. Adjust and trim the gasketing insert so that it projects at least 1/16" at each end of the drop bar and case.
7. With door removed from opening, install the door bottom with plunger at the hinge side, fasten with screws provided, install door in opening.
8. On wooden jambs, install the No. 10 x 1/2" flat head screw at the point where the plunger contacts the jamb to prevent indenting.
9. Screw the actuating plunger in or out as required until the gasketing just touches the sealing surface when the door is closed.
10. It is not necessary to squash the gasket to provide an effective seal. Further adjustment may be necessary for uneven sealing surfaces.