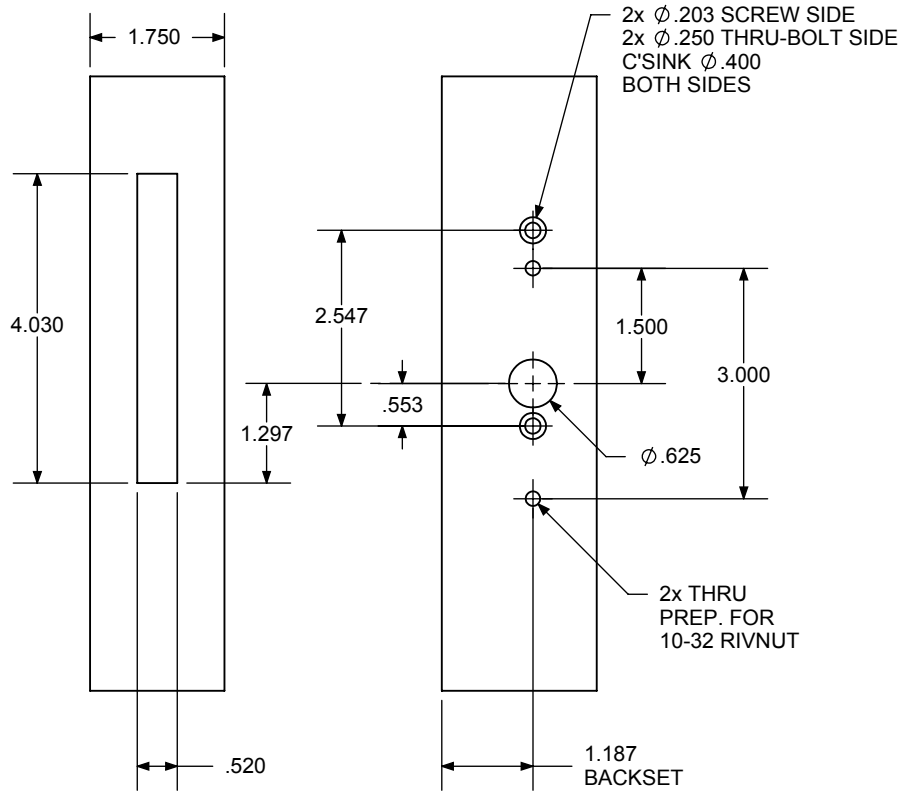
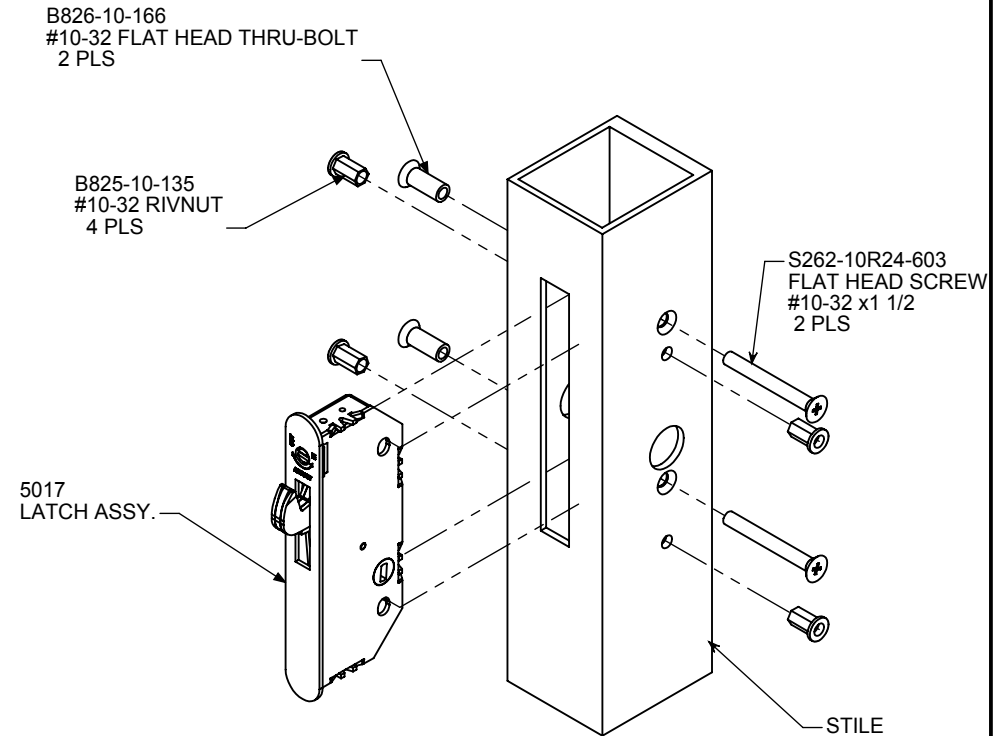


## DOOR PREPARATION

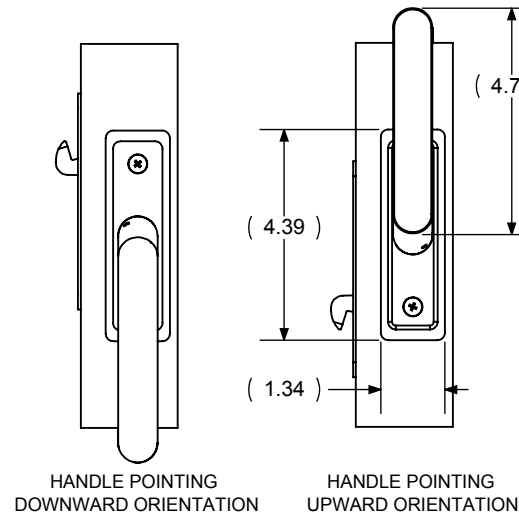


## LOCK INSTALLATION



### STEP 1

- \* INSTALL RIVNUTS.
- \* INSTALL LOCK AND SECURE WITH THRU-BOLTS AND #10-32-1 1/2" FLAT HEAD SCREWS.



### NOTES:

THE FOLLOWING PREPARATION POSITIONS THE HANDLES IN A DOWNWARD ORIENTATION.  
IF DESIRED THE ENTIRE PREPARATION CAN BE INVERTED TO HAVE THE HANDLES POINTING UPWARD. STRIKE TEMPLATING MUST ALSO BE INVERTED.



**TRADEMARK  
HARDWARE**  
WORLD OF QUALITY HARDWARE  
WWW.TMHARDWARE.COM



www.adamsrite.com  
Phone: 800-626-7590  
800-872-3267

Fax: 866-582-4641  
800-232-7329

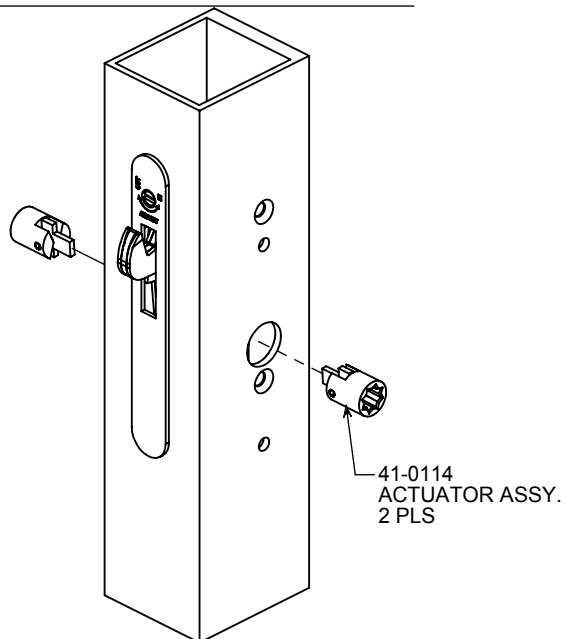
**5500 DEADLOCK**

**80-0180-461** Rev. H CR 135-13

PRODUCT MUST BE INSTALLED  
ACCORDING TO ALL APPLICABLE  
BUILDING AND LIFE SAFETY CODES

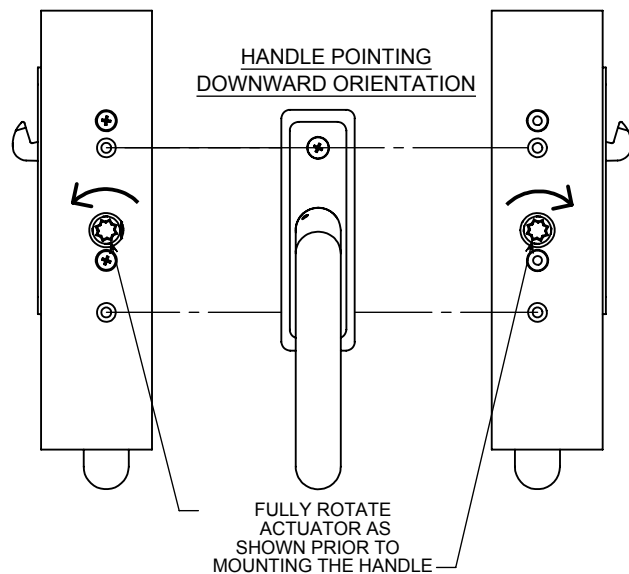
**INSTALLATION INSTRUCTIONS**

## ACTUATOR ASS'Y INSTALLATION



### STEP 2

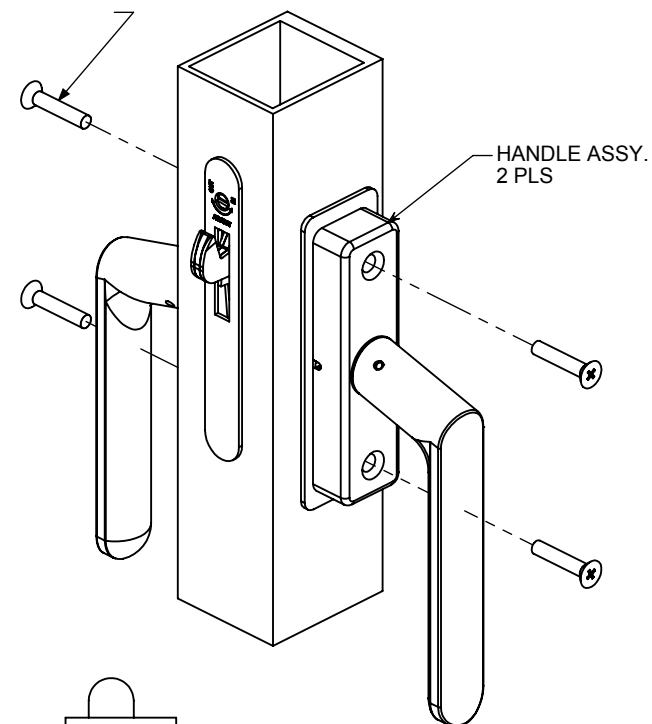
- INSTALL ACTUATOR ASSY. INTO THE HUB OF THE LOCK.
- ROTATE THE ACTUATOR ASSY. AS SHOWN IN FIGURE 4.



**FIGURE 4**

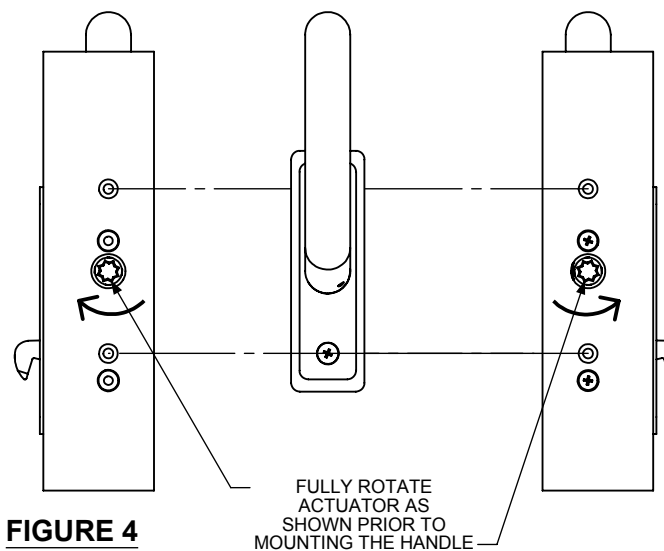
## HANDLE INSTALLATION

S262-10R16N-603  
FLAT HEAD SCREW  
#10-32x1"  
4 PLS



### STEP 3

- INSTALL HANDLES AND SECURE USING (4) #10-32 x 1" FLAT HEAD SCREWS.



**TRADEMARK  
HARDWARE**  
WORLD OF QUALITY HARDWARE  
WWW.TMHARDWARE.COM



**ASSA ABLOY**

www.adamsrite.com  
Phone: 800-626-7590  
800-872-3267

Fax: 866-582-4641  
800-232-7329

**5500 DEADLOCK**

**80-0180-461** Rev. H CR 135-13

PRODUCT MUST BE INSTALLED  
ACCORDING TO ALL APPLICABLE  
BUILDING AND LIFE SAFETY CODES

**INSTALLATION INSTRUCTIONS**

Page 2 of 2

Date: 03/28/13