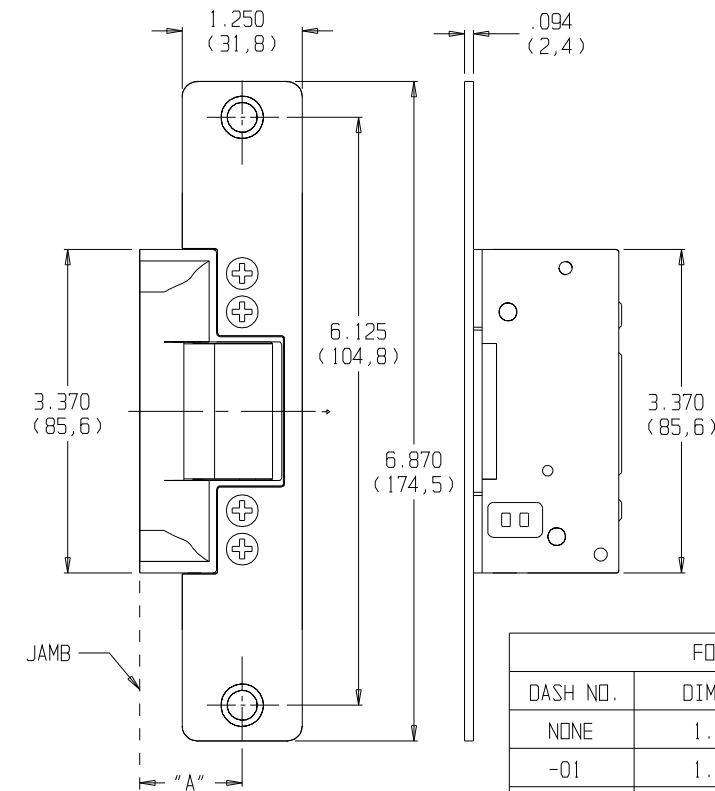


Technical drawing of a rectangular object with dimensions in inches and millimeters:

- Top width: 1.462 (37,1)
- Top width (inner): 1.125 (28,6)
- Top width (inner): .990 (25,1)
- Right side height: .230 (5,8)
- Right side height: 1.638 (41,6)
- Left side height: 1.063 (27,0)
- Left side height (inner): .650 (16,5)
- Bottom width: 1.692 (43,0)

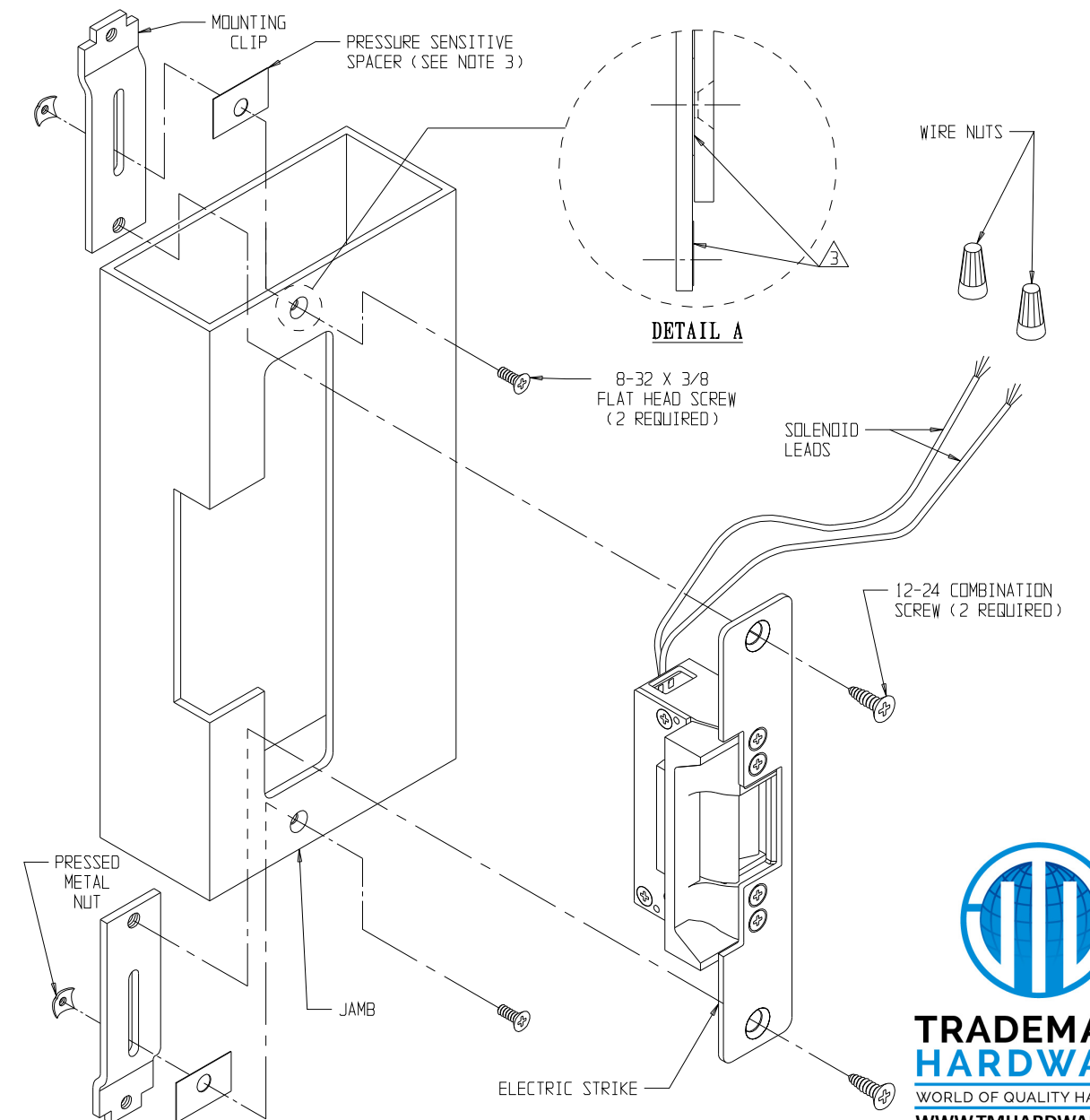


Technical drawing of a door assembly showing dimensions for cylinder centerline, electric strike, and deadlatch.

Dimensions and Callouts:

- HORIZONTAL CENTERLINE OF CYLINDER (A-R 4500 & 4700 SERIES DEADLATCH)
- 1.437 (36,5)
- 3.375 (85,7)
- .651 (16,5)
- 6.875 (174,6)
- 8.125 (206,4)
- HORIZONTAL → OF ELECTRIC STRIKE
- R.156 (4,0) (4 PLCS)
- "A"
- DRILL & C' SINK FOR 8-32 FLAT HEAD SCREW (2 PLCS)
- VERTICAL CENTERLINE OF ELECTRIC STRIKE FACE PLATE DIRECTLY OPPOSITE CENTERLINE OF DEADLATCH

STATIC STRENGTH 1500 lbs.	DYNAMIC STRENGTH 70-foot-pound-force	ENDURANCE 250,000 cycles
------------------------------	---	-----------------------------



**TRADEMARK**  
**HARDWARE**  
WORLD OF QUALITY HARDWARE  
[WWW.TMHARDWARE.COM](http://WWW.TMHARDWARE.COM)



www.adamsrite.com  
Phone: 800-626-7590  
800-872-3267

Fax: 866-582-4641  
800-232-7329

Notes:

Fail-Secure Operation - Unlocks when energized. If power fails the strike remains in a locked condition.

Fail-Safe Operation - Locks when energized. Used in applications requiring automatic unlocking in case of power failure.

Available Voltages: 12V AC Intermittent duty, 12V AC/DC Continuous duty, 16V AC Intermittent duty, 16V AC/DC Continuous duty, 24V AC Intermittent duty, 24V AC/DC Continuous duty.

Warning !

AC Intermittent duty solenoids are designed to be energized 30 seconds at a time. Energizing for longer periods will damage the solenoid.

AC Continuous duty strikes are supplied with a A/R # 4603 rectifier attached to the solenoid leads. These are silent operation strikes - without the "buzzing" sound. They use a DC solenoid with an externally attached, full-wave bridge rectifier.

Wiring

The number of wires will vary depending on features of the strike. The voltage and amperage ratings are marked on all strike labels. The solenoid wires are not polarized.

Monitoring (Optional)

Monitored strikes contain two, internally mounted, switches: one is activated by the latch bolt's penetration of the strike and the other indicates that the strike jaw is either locked or unlocked by the solenoid.

All unused leads from monitor switches should be insulated.

Common contact -Black  
Normally open contact (NO) -White  
Normally closed contact (NC) -Red  
Maximum switching current -7 Amps @ 250 VAC

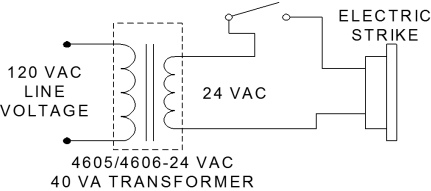
Warning !

Intermittent duty solenoids should not be converted to fail-safe configuration. Fail-safe units use only continuous duty solenoids.

Solenoid Data

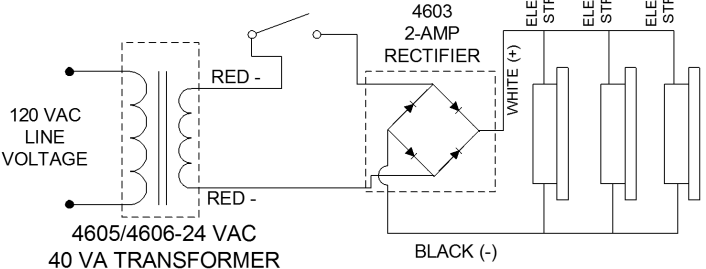
24 VDC CONT.	WHITE STRIPE ON BLACK	141.6	.170	.170	4.09	4.09
16 VDC CONT.	GREEN STRIPE ON BLACK	61.8	.222	.222	3.05	3.05
12 VDC CONT.	RED STRIPE ON BLACK	34.6	.332	.332	3.81	3.81
24 VAC INT.			.744	.431	19.15	6.43
16 VAC INT.	BLUE STRIPE ON BLACK	16.3	1.030	.636	17.30	6.60
12 VAC INT.	YELLOW STRIPE ON BLACK	8.8	1.420	.813	17.74	5.82
DESCRIPTION	WIRE COLOR	COIL RESISTANCE (OHMS ±5%)	PEAK INSTANTANEOUS CURRENT (AMPS)	CONTINUOUS OR HOLD CURRENT (AMPS)	PEAK INSTANTANEOUS POWER (WATTS)	CONTINUOUS OR HOLD POWER (WATTS)

Control Switch (N.O.)  
(ex. Pushbutton, keypad, Card Reader)  
**DRY CONTACTS!**



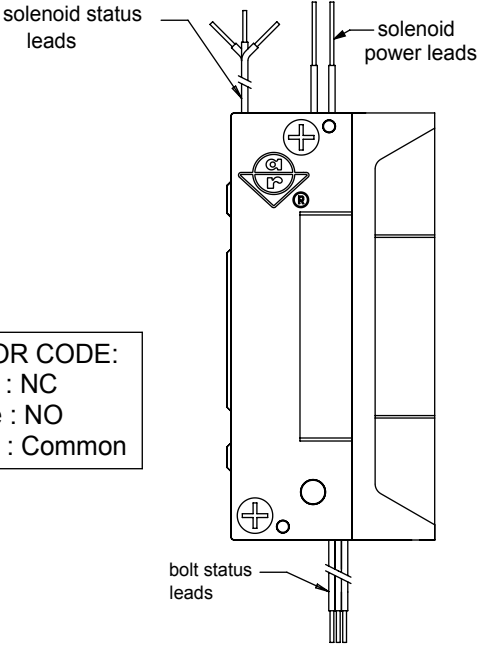
TYPICAL ELECTRIC STRIKE WIRING DIAGRAM  
INTERMITTENT DUTY FAIL-SECURE 24 VAC

Control Switch (N.O.)  
(ex. Pushbutton, keypad, Card Reader)  
**DRY CONTACTS!**



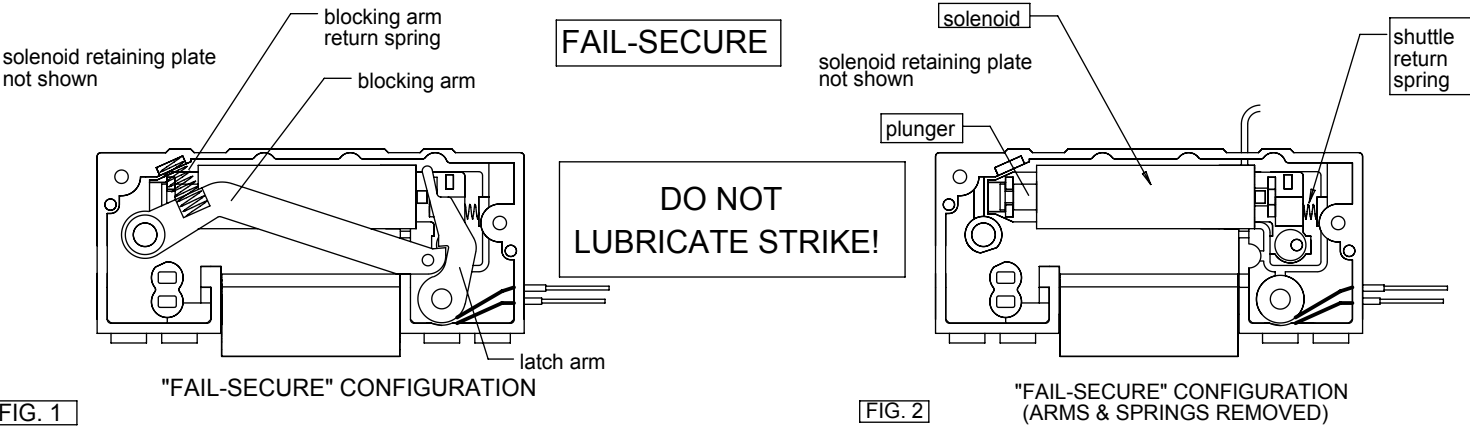
TYPICAL ELECTRIC STRIKE WIRING DIAGRAM  
INTERMITTENT/CONTINUOUS DUTY 24 VDC

WIRE CODING (MONITORED VERSION)

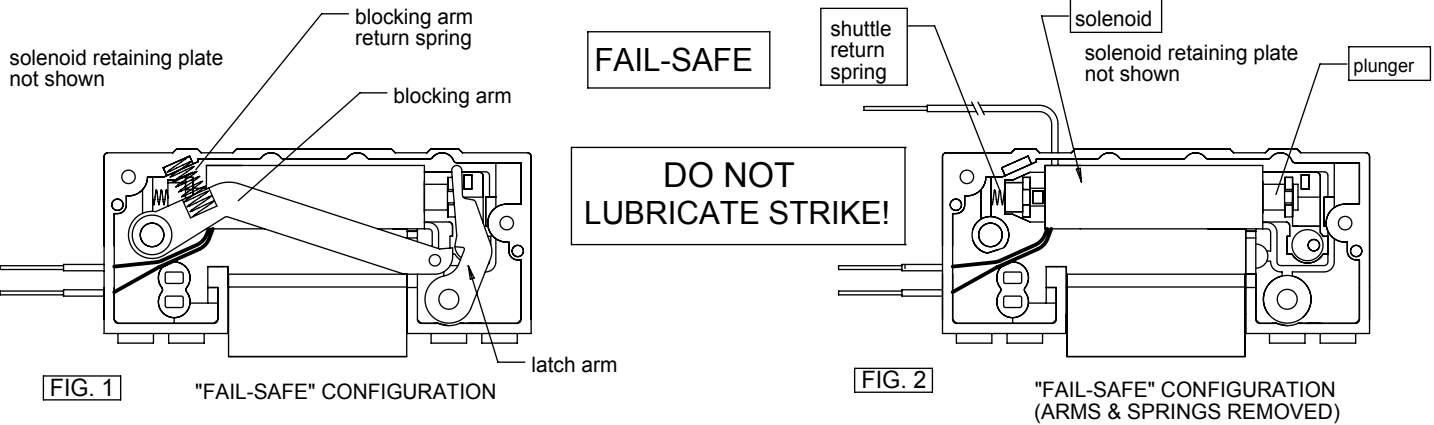


COLOR CODE:  
Red : NC  
White : NO  
Black : Common

FIELD REVERSIBLE (FAIL-SECURE)



FIELD REVERSIBLE (FAIL-SAFE)



www.adamsrite.com  
Phone: 800-626-7590  
800-872-3267

ASSA ABLOY

Fax: 866-582-4641  
800-232-7329

7100 SERIES (DATA SHEET WIRE CODING FIELD REVERSIBLE)

80-0180-381

Rev. H

ECN: 11955D

Date: 06/19/12

Page 1 of 1

Appvd: MP Date: 07/20/12