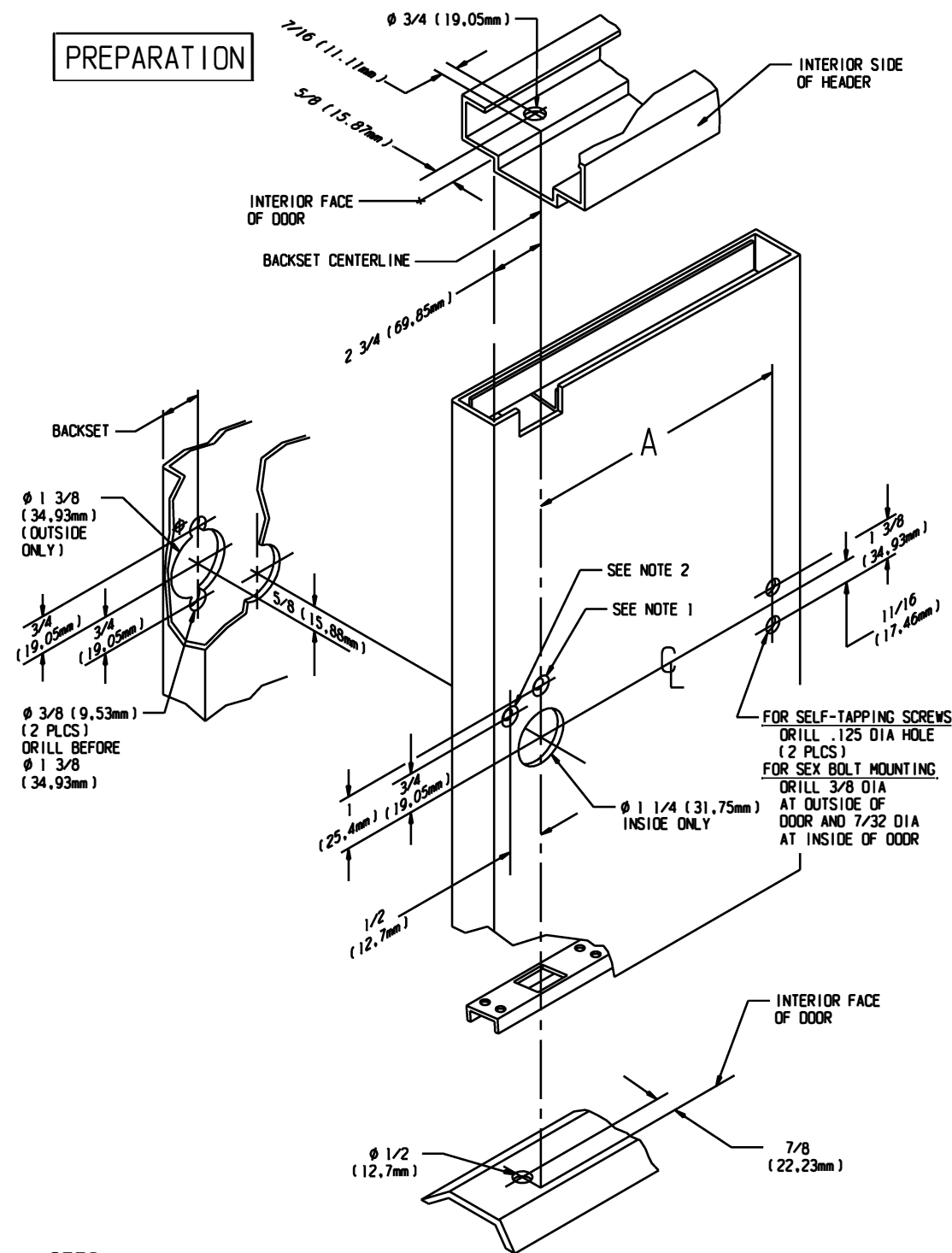
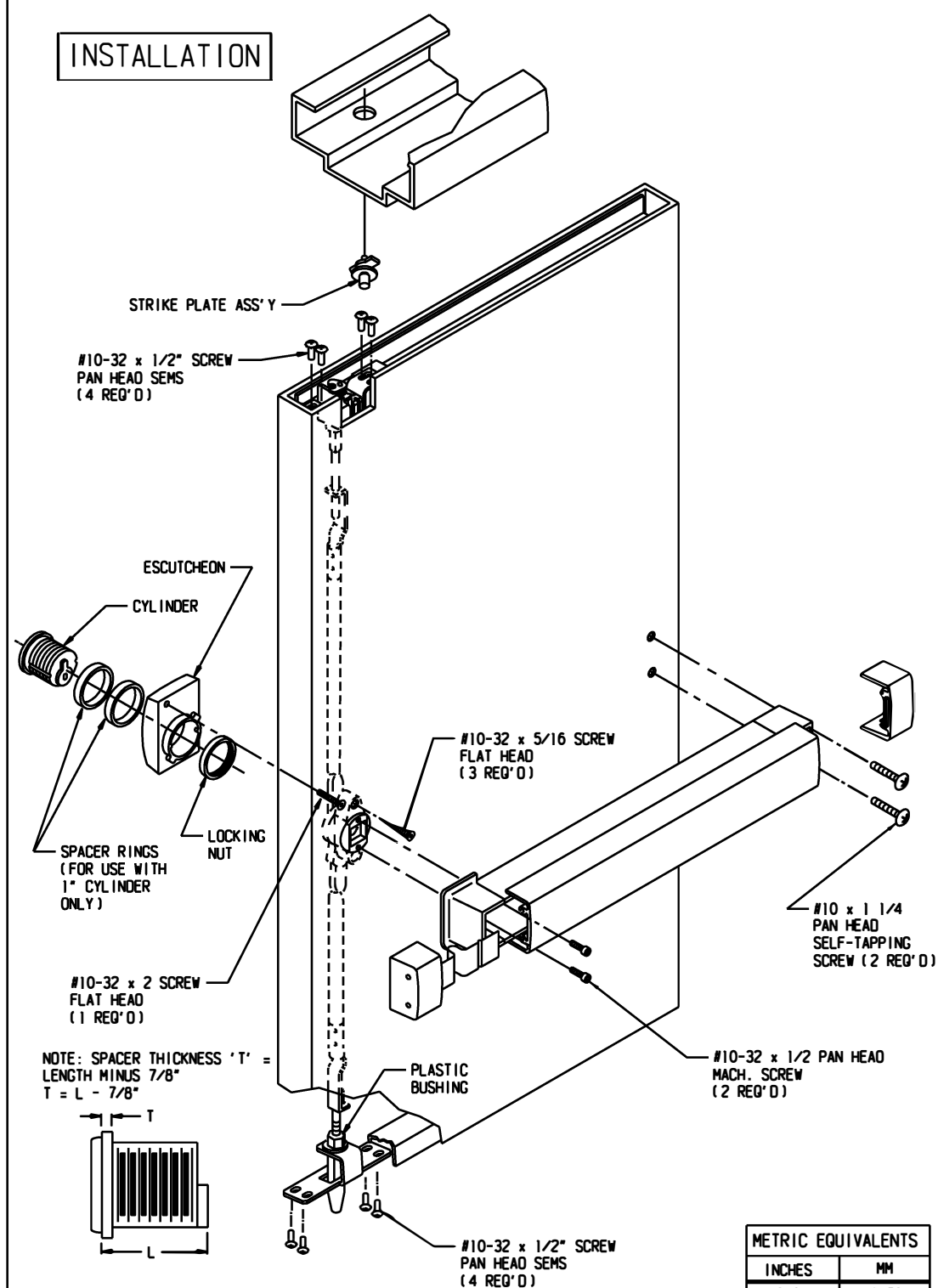


## PREPARATION



## INSTALLATION



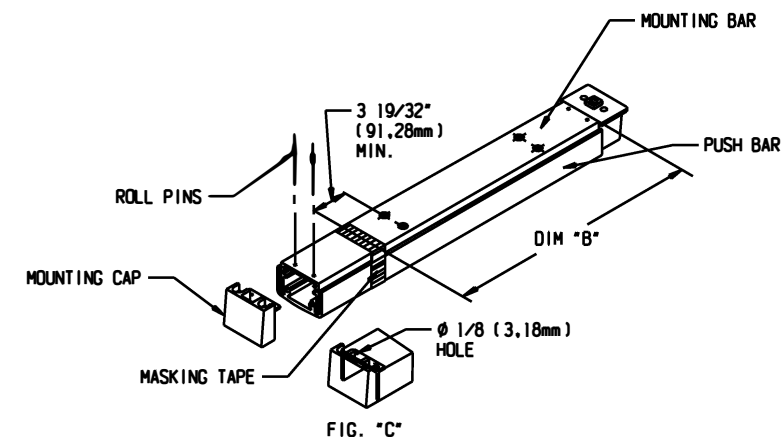
| INCHES | MM    |
|--------|-------|
| 3/8    | 9,53  |
| 1/2    | 12,70 |
| 5/8    | 15,87 |
| 1      | 25,40 |
| 2      | 50,80 |

## DOOR OPENING WIDTH

|       |                      |                      |                      |                       |
|-------|----------------------|----------------------|----------------------|-----------------------|
|       | 30" ( 768mm )        | 36" ( 914,4mm )      | 42" ( 1066,8mm )     | 48" ( 1219,2mm )      |
| DIM A | 24 1/4" ( 615,95mm ) | 30 1/4" ( 768,35mm ) | 36 1/4" ( 920,75mm ) | 42 1/4" ( 1073,15mm ) |

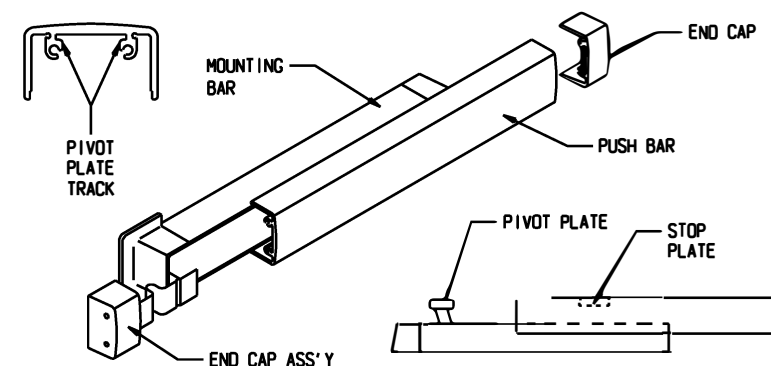
### CUT-OFF INSTRUCTIONS FOR NON-STANDARD DOORS

1. DRIVE OUT TWO ROLL PINS.
2. REMOVE MOUNTING CAP.
3. COLLAPSE BAR AND TAPE DOWN IN THE AREA OF CUT-OFF.
4. DETERMINE EXTRUSION LENGTH ("B" DIM). (NOTE: 3 19/32 (91.28mm) MINIMUM DIMENSION FROM RIVET CENTERLINE TO NEW CUT-OFF LENGTH AS SHOWN).
5. MEASURE MOUNTING BAR (NOT PUSH BAR), AND MARK EXTRUSION LENGTH ON TAPE.
6. SAW OFF EXCESS LENGTH. REMOVE TAPE AND DEBURR.
7. LAY MOUNTING CAP OVER MOUNTING BAR (SEE FIG. "C"), AND USE AS A GUIDE TO DRILL TWO  $\phi$  1/8 (3.18mm) HOLES.
8. RE-INSTALL MOUNTING CAP INTO MOUNTING BAR AND DRIVE TWO ROLL PINS INTO HOLES.



### SEPARATING PUSH BAR FROM MOUNTING BAR PROCEDURE

1. REMOVE BOTH END CAPS. THE RETAINER IS ATTACHED TO THE NOSE END CAP.
2. SLIDE PUSH BAR TOWARD HINGE SIDE OF DOOR.
3. CONTINUE TO SLIDE PUSH BAR PAST THE PIVOT PLATE THAT RIDES IN PUSH BAR TRACK.
4. SLIDE PUSH BAR IN OPPOSITE DIRECTION KEEPING PIVOT PLATE OUT OF TRACK UNTIL PUSH BAR IS FREE OF MOUNTING BAR.



## INSTALLING PUSH BAR TO MOUNTING BAR

1. WITH PUSH BAR IN HAND AND MOUNTING BAR ATTACHED TO DOOR, FIND STOP PLATE STAKED INTO PUSH BAR. (THIS PLATE IS ON THE LATCH END OF ASSEMBLED UNIT). SLIDE THE PIVOT PLATE NEAREST HINGE INTO TRACK OF PUSH BAR UNTIL SECOND PIVOT PLATE IS EXPOSED. INSERT PIVOT PLATE INTO TRACK ON PUSH BAR AND SLIDE IN OPPOSITE DIRECTION UNTIL PUSH BAR AND MOUNTING BAR ALIGN.

PRODUCT MUST BE INSTALLED  
ACCORDING TO ALL APPLICABLE  
BUILDING AND LIFE SAFETY CODES



**www.adamsrite.com**  
**Phone: 800-626-7590**  
**800-872-3267**  


---

**Fax: 866-582-4641**  
**800-232-7329**

**80-0180-210**

Rev. L

## 8500 EXIT DEVICE FOR HOLLOW METAL DOOR AND FRAME

Ecn 11955C

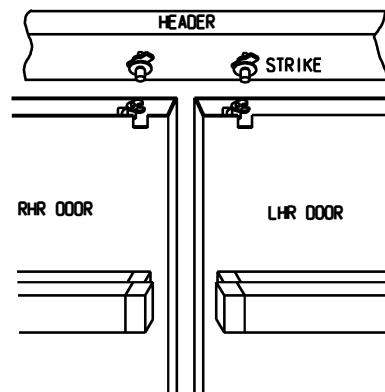
Date: 07-09-12

Page 1 of 2



# INSTALLATION INSTRUCTION CHECKLIST

ADAMS RITE 8500 EXIT DEVICE



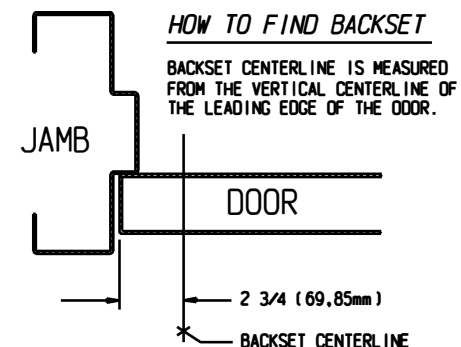
## IMPORTANT!

This device is unhandled. It can be installed in either left hand reverse or right hand reverse doors without alteration. The doors' lead stile and header preparation are IDENTICAL *not* mirror image. Note in the sketch above that the yoke type bolt *always* faces right (as viewed from inside) and the strike post is toward the right of the backset centerline for *both* doors.

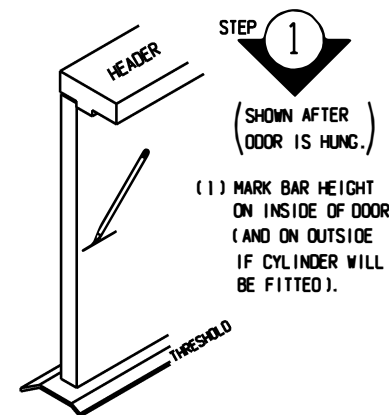
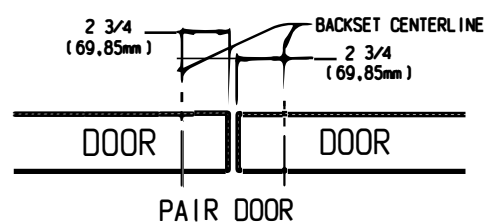
**NOTE** STEPS 1 THROUGH 9 ARE MORE EASILY ACCOMPLISHED IF DOOR IS NOT INSTALLED IN FRAME.

## HOW TO FIND BACKSET

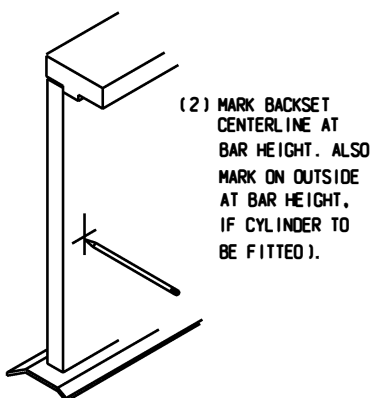
BACKSET CENTERLINE IS MEASURED FROM THE VERTICAL CENTERLINE OF THE LEADING EDGE OF THE DOOR.



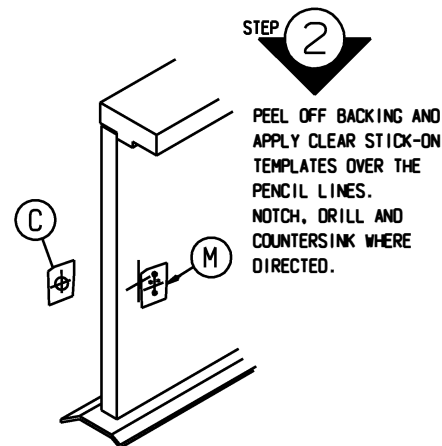
## SINGLE DOOR



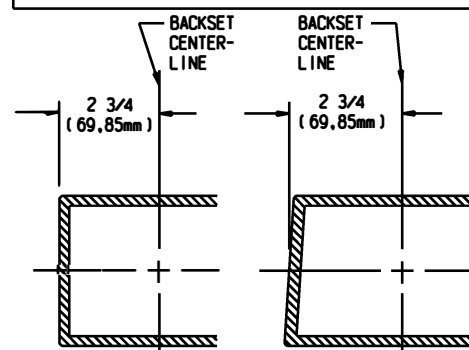
**STEP 1**  
(SHOWN AFTER DOOR IS HUNG.)  
(1) MARK BAR HEIGHT ON INSIDE OF DOOR (AND ON OUTSIDE IF CYLINDER WILL BE FITTED).



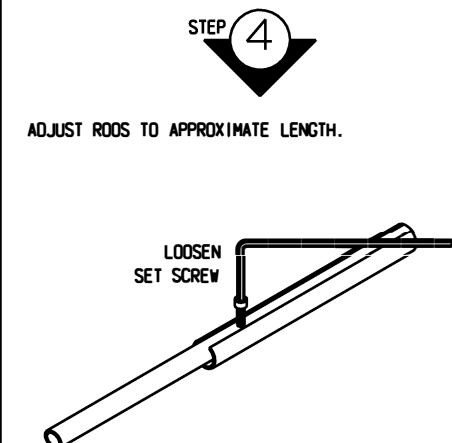
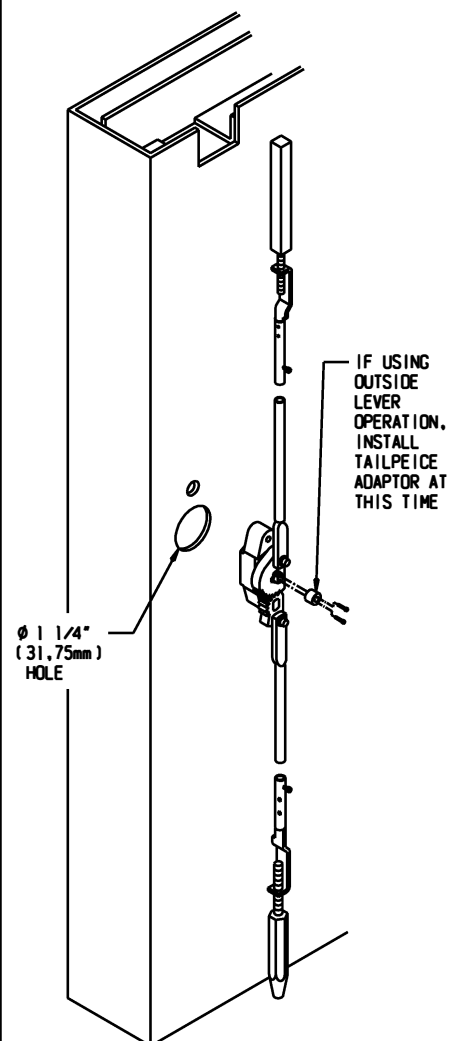
(2) MARK BACKSET CENTERLINE AT BAR HEIGHT. ALSO MARK ON OUTSIDE AT BAR HEIGHT, IF CYLINDER TO BE FITTED.



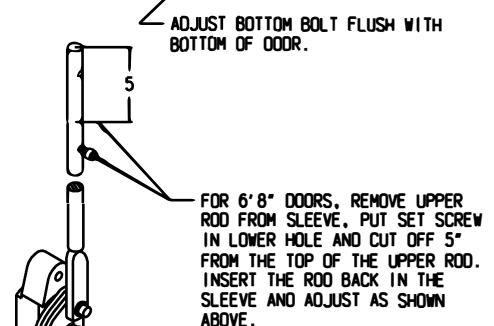
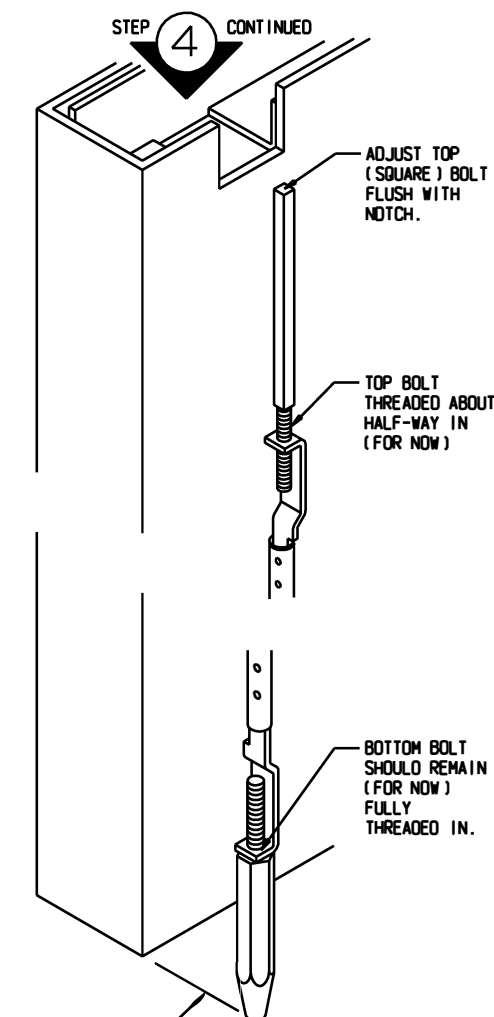
**STEP 2**  
PEEL OFF BACKING AND APPLY CLEAR STICK-ON TEMPLATES OVER THE PENCIL LINES. NOTCH, DRILL AND COUNTERSINK WHERE DIRECTED.



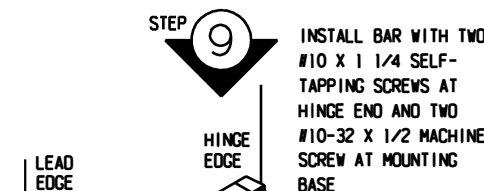
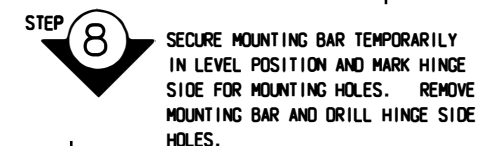
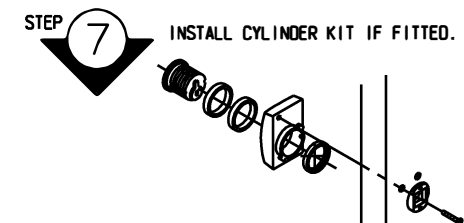
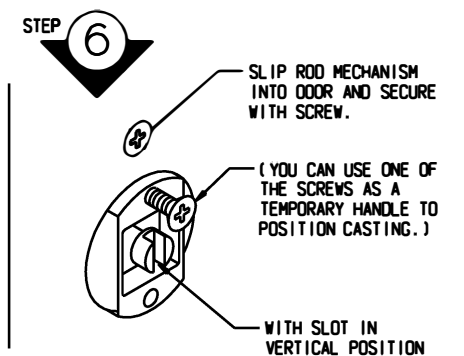
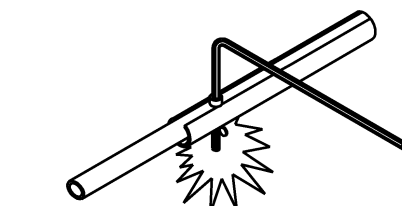
**STEP 3**  
LAY ROD MECHANISM ON PREPARED DOOR WITH GEAR PLATES OUTWARD AND CASTING RESTING IN  $\phi 1 \frac{1}{4}$  (31.75mm) HOLE IN DOOR AS SHOWN BELOW.



ADJUST RODS TO APPROXIMATE LENGTH.



WHEN ROUGH ADJUSTMENT OF RODS IS CORRECT, TIGHTEN METAL-PIERCING SCREWS ALL THE WAY THRU TUBE. YES! ALL THE WAY THROUGH AND TIGHT.



INSTALL THE TOP ACTUATOR ASSEMBLY ONTO THE SQUARE BOLT AS SHOWN. ADJUST THE SQUARE BOLT (CW TO LOWER - CCW TO RAISE) SO THAT THE SQUARE BOLT IS FLUSH WITH THE TOP OF THE STOP PLATE AND THE ACTUATOR MOUNTING BRACKETS SET ONTO THE TOP CHANNEL OF THE DOOR. ONCE THE ACTUATOR IS ADJUSTED PROPERLY SECURE WITH MOUNTING SCREWS.

