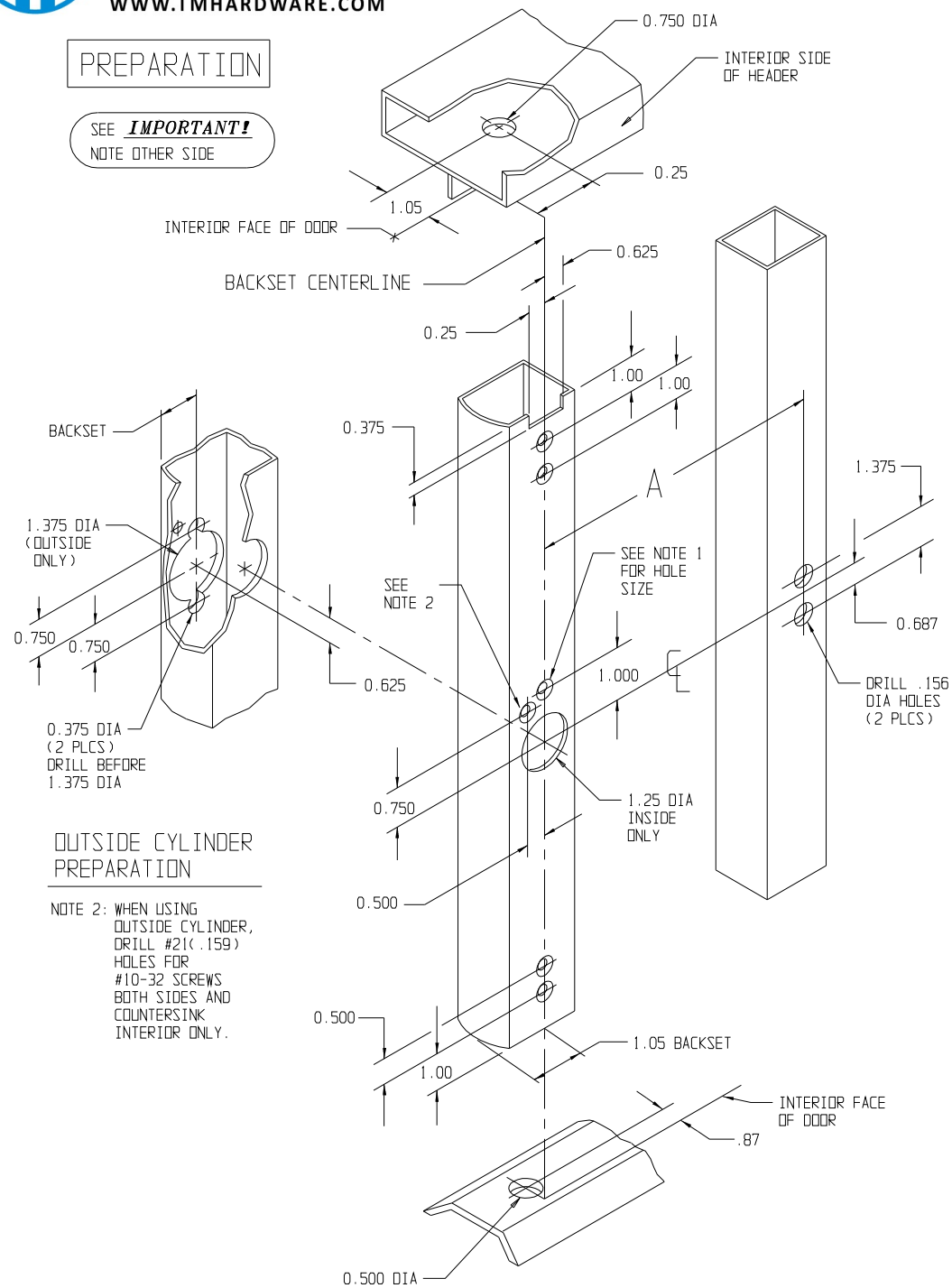


PREPARATION

SEE **IMPORTANT!**  
NOTE OTHER SIDE



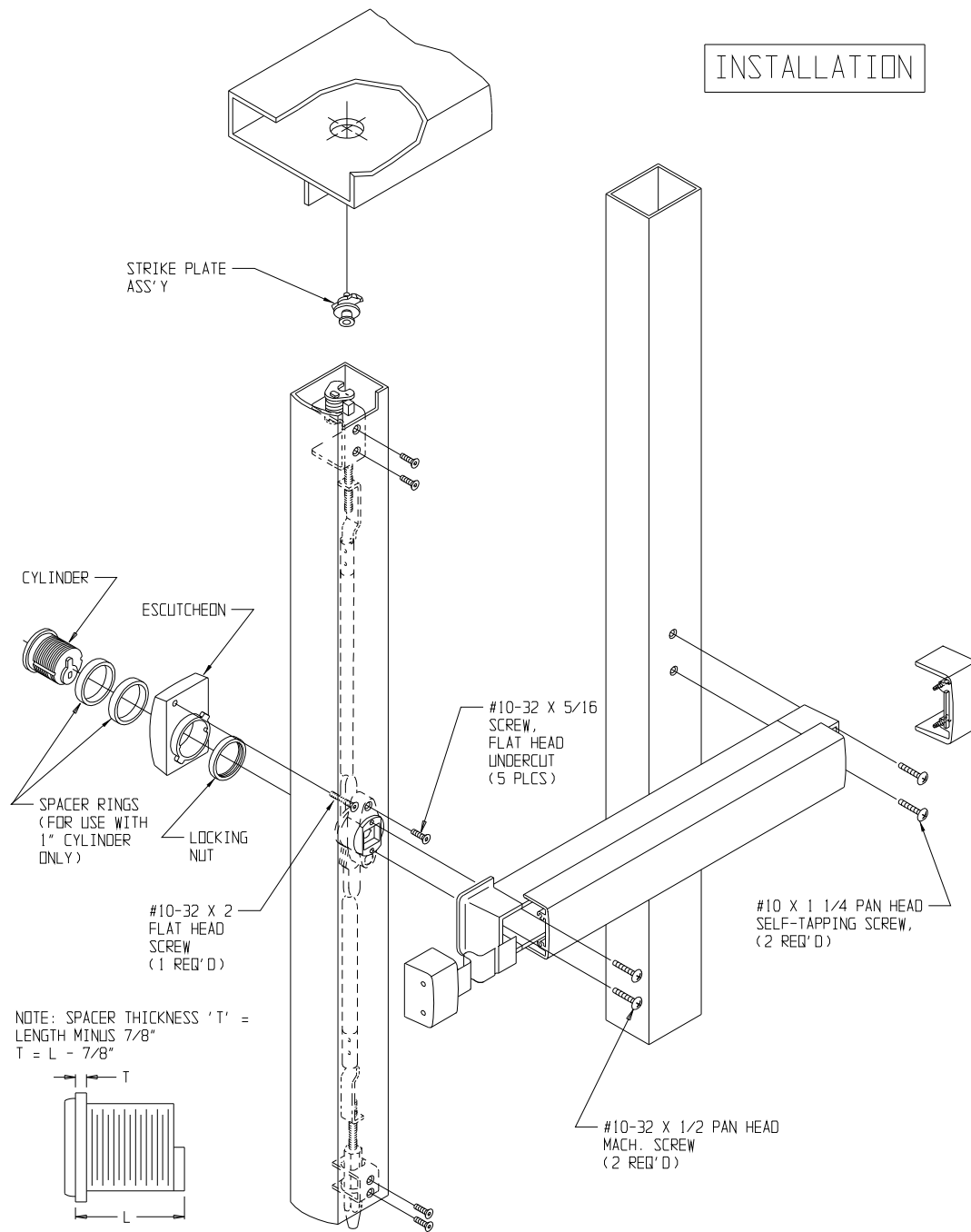
OUTSIDE CYLINDER  
PREPARATION

NOTE 2: WHEN USING  
OUTSIDE CYLINDER,  
DRILL #21(.159)  
HOLES FOR  
#10-32 SCREWS  
BOTH SIDES AND  
COUNTERSINK  
INTERIOR ONLY.

NOTE 1: DRILL #21(.159) AND COUNTERSINK 5 HOLES FOR #10-32 FLAT HEAD SCREWS.

NOTE: THESE DIMENSIONS AND TEMPLATES ASSUME A DOOR 1.75" THICK WITH 1/8" STILE WALL.  
DOORS WITH OTHER THICKNESS OR WALL WILL REQUIRE MODIFICATION TO THE DEVICE AND  
TO TEMPLATES (H) AND (F).

INSTALLATION



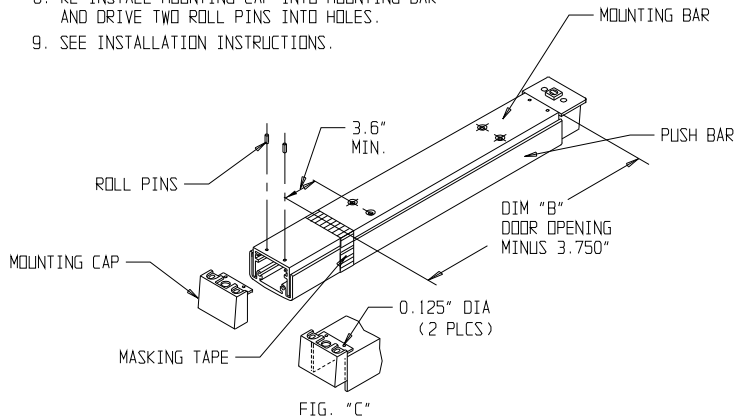
METRIC EQUIVALENTS											
INCHES	MM	INCHES	MM	INCHES	MM	INCHES	MM	INCHES	MM	INCHES	MM
0.125	3,18	0.687	17,45	1.250	31,75	27.25	692,15	42	1066,80	5/16	7,92
0.250	6,35	0.750	19,05	1.375	34,92	30	762,00	45.25	1149,35	5/8	15,88
0.375	9,52	0.87	22,10	2.000	50,80	33.25	844,55	48	1219,20		
0.500	12,70	1.00	25,40	3.6	91,44	36	914,40				
0.625	15,87	1.05	26,67	3.750	95,25	39.25	996,95				

PRODUCT MUST BE INSTALLED  
ACCORDING TO ALL APPLICABLE  
BUILDING AND LIFE SAFETY CODES

BACKSET 1.05"	DOOR OPENING WIDTH			
	30"	36"	42"	48"
DIM A	27.25	33.25	39.25	45.25

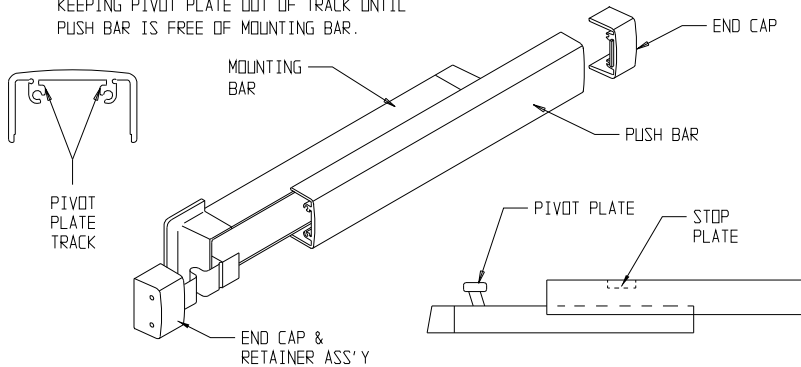
CUT-OFF INSTRUCTIONS FOR NON-STANDARD DOORS

1. DRIVE OUT TWO ROLL PINS.
2. REMOVE MOUNTING CAP.
3. COLLAPSE BAR AND TAPE DOWN IN THE AREA OF CUT-OFF.
4. DETERMINE EXTRUSION LENGTH ("B" DIM). (NOTE: 3.6" MINIMUM DIMENSION FROM RIVET CENTERLINE TO NEW CUT-OFF LENGTH AS SHOWN).
5. MEASURE MOUNTING BAR (NOT PUSH BAR), AND MARK EXTRUSION LENGTH ON TAPE.
6. SAW OFF EXCESS LENGTH, REMOVE TAPE AND DEBURR.
7. LAY MOUNTING CAP OVER MOUNTING BAR (FIG "C"), AND USE AS A GUIDE TO DRILL 0.125" DIA HOLES.
8. RE-INSTALL MOUNTING CAP INTO MOUNTING BAR AND DRIVE TWO ROLL PINS INTO HOLES.
9. SEE INSTALLATION INSTRUCTIONS.



SEPARATING PUSH BAR AND MOUNTING BAR PROCEDURE

1. REMOVE BOTH END CAPS. THE RETAINER IS ATTACHED TO THE NOSE END CAP.
2. SLIDE PUSH BAR TOWARD HINGE SIDE OF DOOR.
3. CONTINUE TO SLIDE PUSH BAR PAST THE PIVOT PLATE THAT RIDES IN PUSH BAR TRACK.
4. SLIDE PUSH BAR IN OPPOSITE DIRECTION KEEPING PIVOT PLATE OUT OF TRACK UNTIL PUSH BAR IS FREE OF MOUNTING BAR.

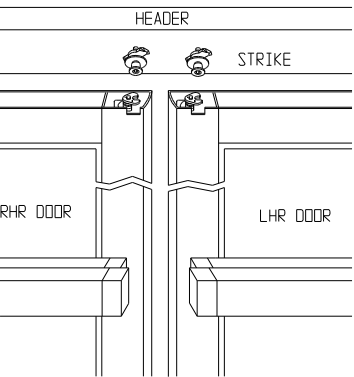


INSTALLING PUSH BAR TO MOUNTING BAR

1. WITH PUSH BAR IN HAND AND MOUNTING BAR ATTACHED TO DOOR, FIND STOP PLATE STAKED INTO PUSH BAR. (THIS PLATE IS ON THE LATCH END OF ASSEMBLED UNIT). SLIDE THE PIVOT PLATE NEAREST HINGE INTO TRACK OF PUSH BAR UNTIL SECOND PIVOT PLATE IS EXPOSED. INSERT PIVOT PLATE INTO TRACK ON PUSH BAR AND SLIDE IN OPPOSITE DIRECTION UNTIL PUSH BAR AND MOUNTING BAR ALIGN.

# INSTALLATION INSTRUCTION CHECKLIST

ADAMS RITE  
SERIES 8600 EXIT  
DEVICE

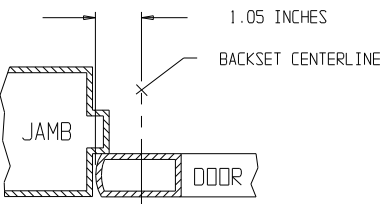


## IMPORTANT!

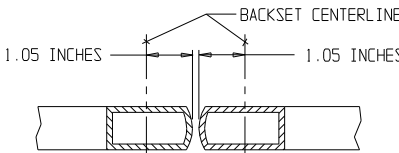
This device is unhandred. It can be installed in either left hand reverse or right hand reverse doors without alteration. The doors' lead stile and header preparation are IDENTICAL *not* mirror image. Note in the sketch above that the yoke type bolt *always* faces right (as viewed from inside) and the strike post is toward the right of the backset centerline for *both* doors.

**NOTE** STEPS 1 THRU 9 ARE MORE EASILY ACCOMPLISHED IF DOOR IS NOT INSTALLED IN FRAME.

## HOW TO FIND BACKSET

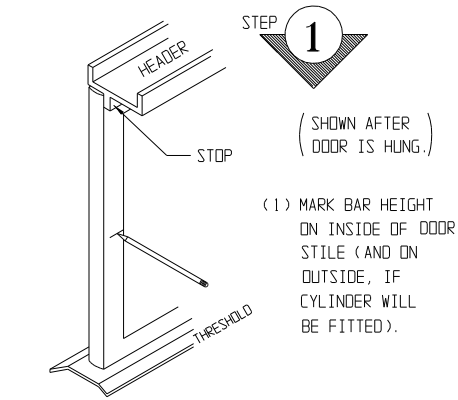


SINGLE DOOR



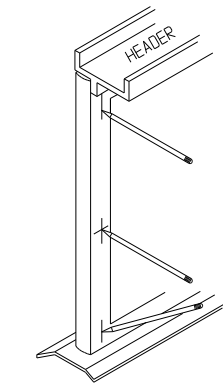
BEVEL STILE AND FLAT STILE APPLY TO SINGLE DOOR ONLY.

PAIR DOOR

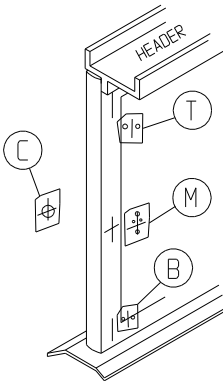


STEP 1  
(SHOWN AFTER  
DOOR IS HUNG.)

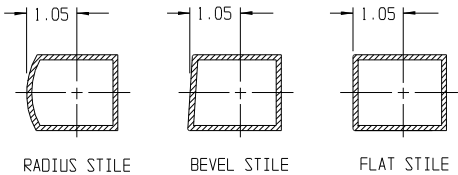
(1) MARK BAR HEIGHT  
ON INSIDE OF DOOR  
STILE (AND ON  
OUTSIDE, IF  
CYLINDER WILL  
BE FITTED).



(2) MARK BACKSET  
CENTERLINE AT  
TOP, BAR HEIGHT  
AND BOTTOM.  
(ALSO MARK ON  
OUTSIDE AT BAR  
HEIGHT IF CYLINDER  
TO BE FITTED).



(3) PEEL OFF BACKING  
AND APPLY CLEAR  
STICK-ON TEMPLATES  
OVER THE PENCIL  
LINES. NOTCH,  
DRILL AND  
COUNTERSINK  
WHERE SHOWN.



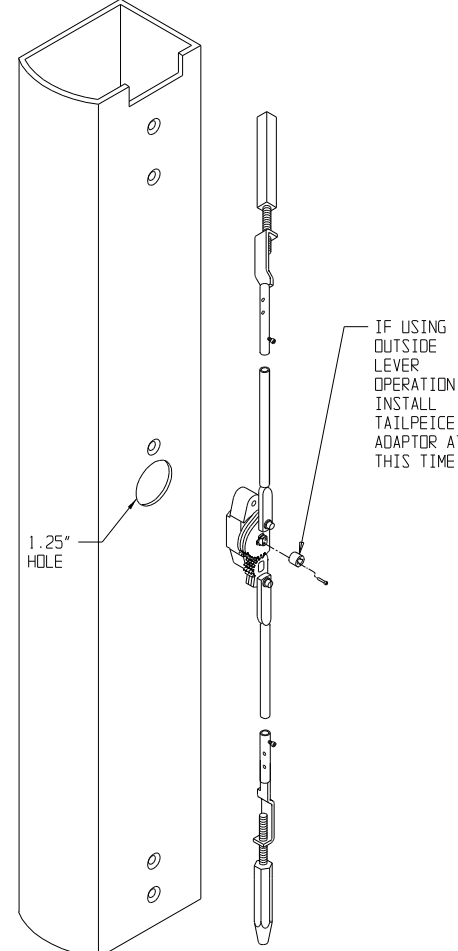
RADIUS STILE

BEVEL STILE

FLAT STILE

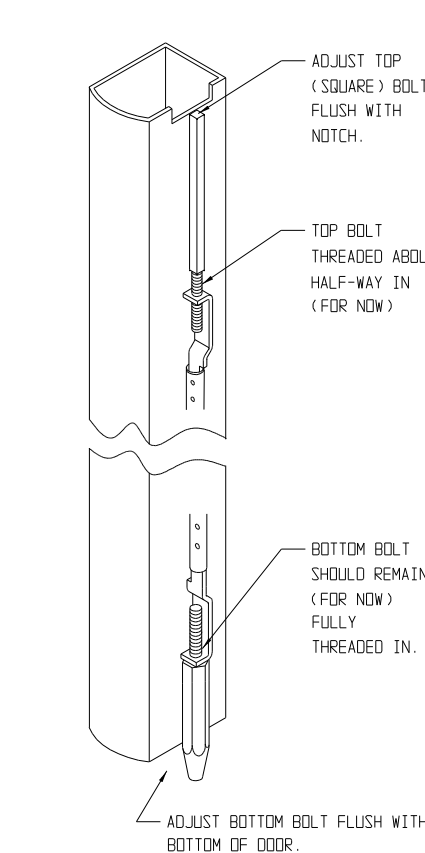
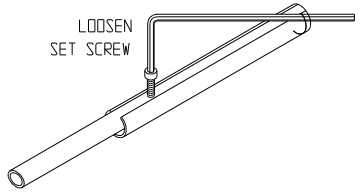
BACKSET IS MEASURED AT DOOR CENTERLINE, NOT THE EDGE.

STEP 3  
LAY ROD MECHANISM ON PREPARED DOOR WITH GEAR PLATES OUTWARD AND CASTING RESTING IN 1 1/4" DIAMETER HOLE IN DOOR AS SHOWN BELOW.



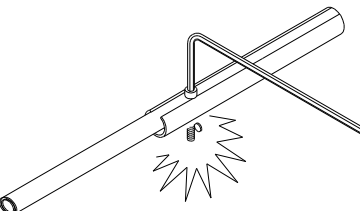
STEP 4

ADJUST RODS TO APPROXIMATE LENGTH.  
(ROUGH ADJUSTMENT FOR NOW)



STEP 5

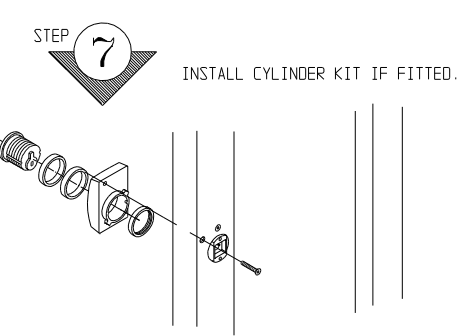
WHEN ROUGH ADJUSTMENT OF RODS IS CORRECT, TIGHTEN METAL-PIERCING SCREWS ALL THE WAY THRU TUBE. YES! ALL THE WAY THROUGH AND TIGHT.



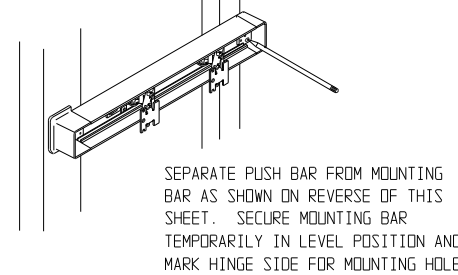
STEP 6

(YOU CAN USE ONE OF THE SCREWS AS A TEMPORARY HANDLE TO POSITION CASTING).

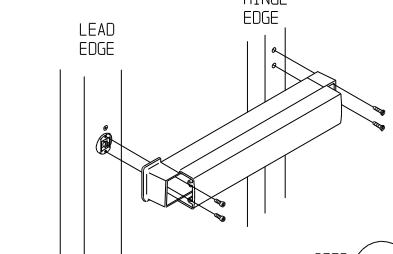
WITH SLOT IN VERTICAL POSITION



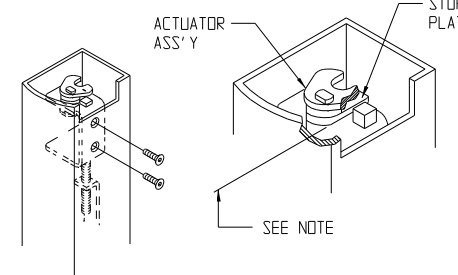
STEP 8



REMOVE BAR, DRILL .156" DIA HOLES AT HINGE EDGE. INSTALL BAR WITH TWO #10 X 1 1/4 SELF-TAPPING SCREWS AT HINGE EDGE AND TWO #10-32 X 1/2 MACHINE SCREWS AT LEAD EDGE.

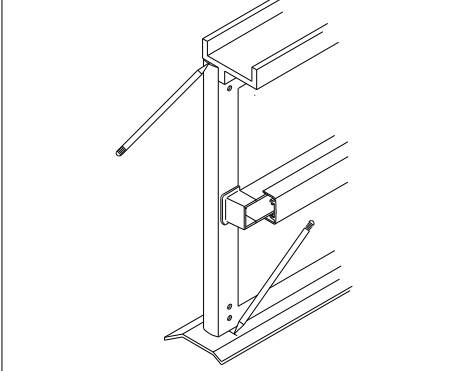


INSTALL TOP BOLT ACTUATOR ASSEMBLY AND SECURE WITH TWO SCREWS. WITH ASSEMBLY IN LOCKED POSITION AND PUSH BAR RELEASED, END OF SQUARE BOLT SHOULD ENGAGE STOP PLATE AS SHOWN. (FOR FINE ADJUSTMENT, REMOVE ACTUATOR ASSEMBLY, ADJUST BOLT UP OR DOWN AND REINSTALL ASSEMBLY).



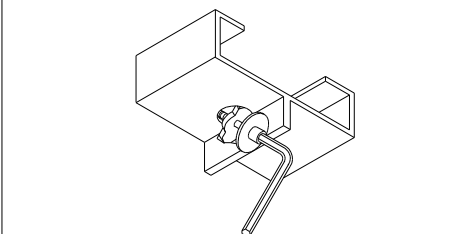
NOTE: SQUARE BOLT MUST BE FLUSH WITH TOP OF STOP PLATE.

STEP 10  
INSTALL DOOR IN FRAME. MARK BACKSET CENTERLINE ON HEADER AND THRESHOLD. ALSO MARK WHERE FACE OF CLOSED DOOR RESTS. APPLY CLEAR TEMPLATES H AND F AND DRILL STRIKE HOLES.

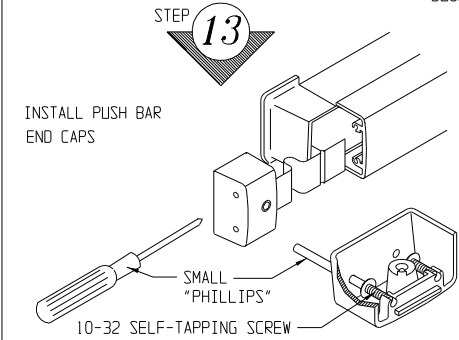
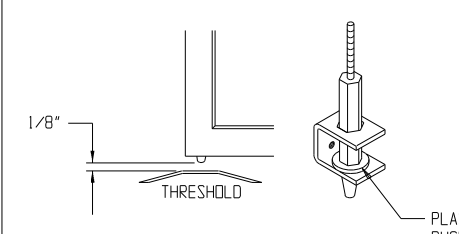


STEP 11

POSITION STRIKE PLATE ASSEMBLY ON HEADER. THEN, TIGHTEN SECURELY WITH HEX WRENCH.



(1) HOLD DOOR OPEN.  
(2) DEPRESS AND RELEASE PUSH BAR.  
(3) ADJUST BOTTOM BOLT SO IT CLEARS THRESHOLD BY 1/8" AS DOOR CLOSSES.  
(4) INSTALL BOTTOM GUIDE AND SECURE WITH TWO SCREWS.



www.adamsrite.com  
Phone: 800-626-7590  
800-872-3267  
Fax: 866-582-4641  
800-232-7329

80-0180-51

Rev. P

8600 EXIT DEVICE

Ecn 11955B

Date: 06/25/12

INSTALLATION INSTRUCTIONS

Page 2 of 2

Appvd: MP

Date: 07/06/12