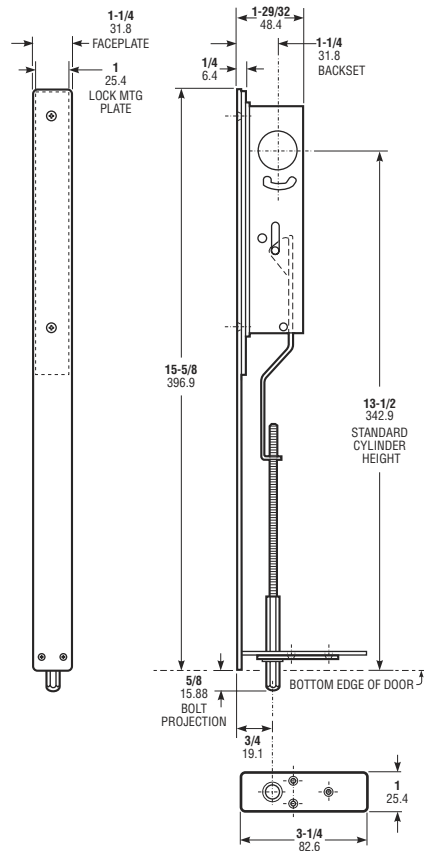




**TRADEMARK  
HARDWARE**

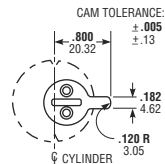
WWW.TMHARDWARE.COM



### DIMENSIONS

INCHES  
MILLIMETERS

Nominal, subject to tolerance extremes.

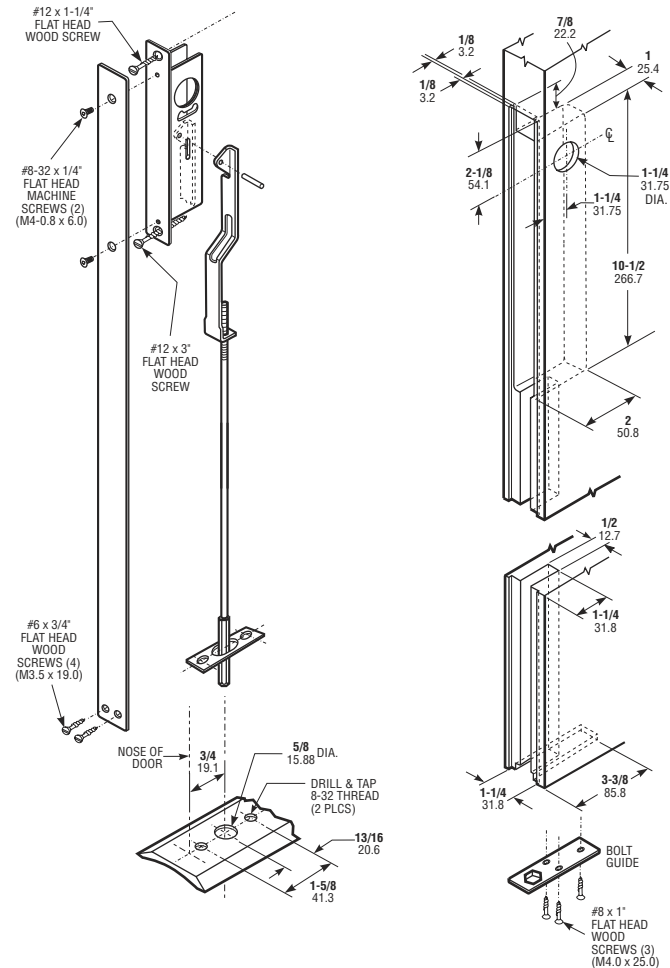


### Cylinder Cam

1877 locks are operable by any standard 1-5/32" diameter mortise cylinder with special MS<sup>®</sup> cam dimensioned as shown. Cylinders with MS<sup>®</sup> cams can be readily obtained from most cylinder manufacturers. See page SW-28 for cylinder make and trim ring information.

### INSTALLATION

FOR INSTALLATION  
LOCKING THRESHOLD.  
INVERT FOR HEADER LOCKING



**ADAMS RITE MANUFACTURING CO.**

260 Santa Fe Street, Pomona, CA 91767  
Phone: (909) 632-2300 Fax: (909) 632-2369

**1877 Cylinder-Operated  
Flushbolt For Wood Doors**