



**Trademark  
HARDWARE**

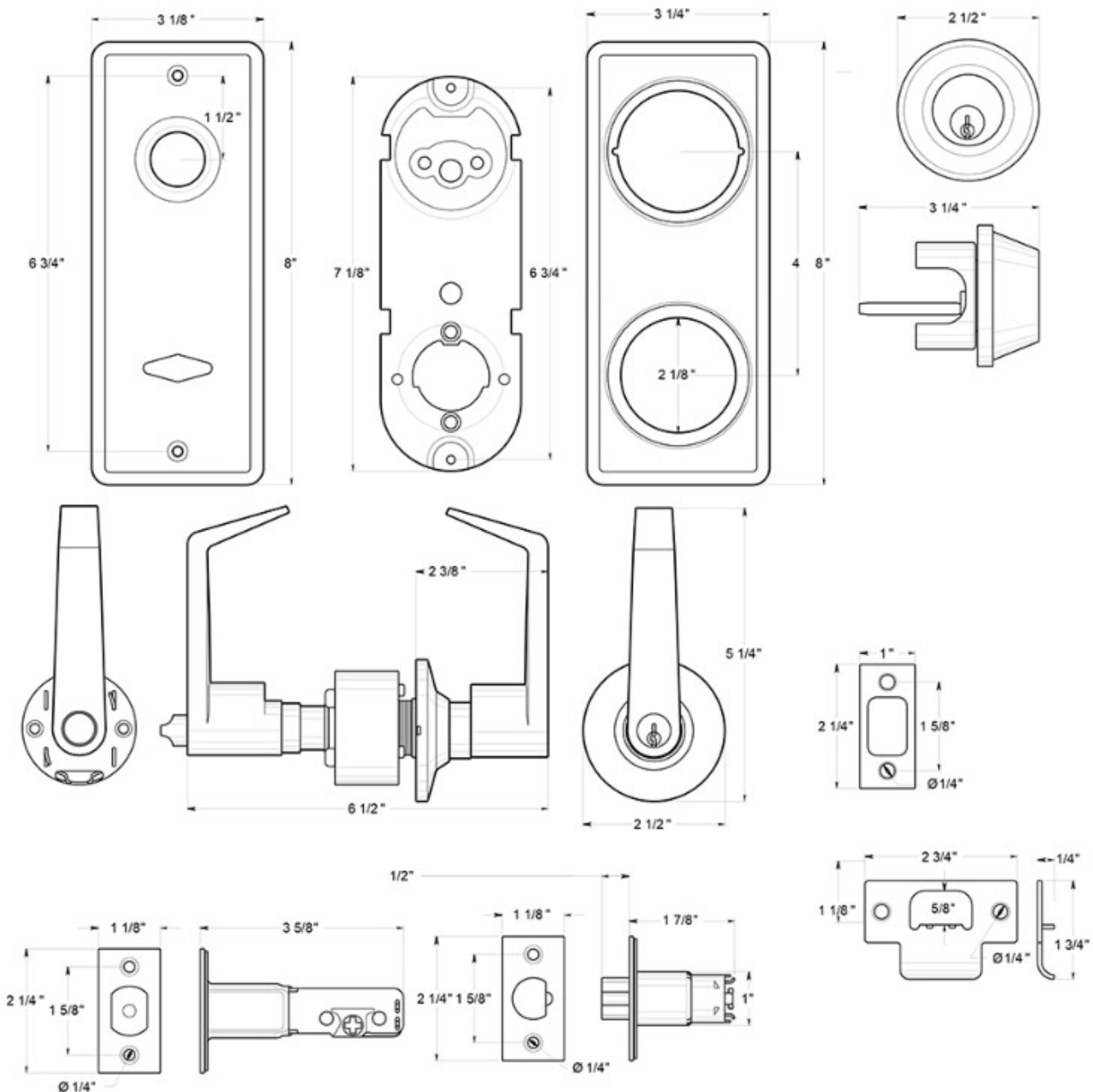
148 Horton Drive, Suite B  
Monsey, NY 10952

Phone: 845-388-1300  
Fax: 845-367-4657

www.TMHardware.com  
sales@tmhardware.com

## CL300ILC

INTERCONNECTED LOCK / ENTRY  
COMMERCIAL GRADE 2 / STEEL & ZINC



DRAWING NOT TO SCALE

NOTE: Deltana reserves the right to constantly improve its products and is not responsible for differences between the product in-hand and the specifications contained in this drawing. We do not recommend to pre-drill holes or pre-cut woods or metals based on the drawing information if the veracity of the specifications has not been proven by the live product.