

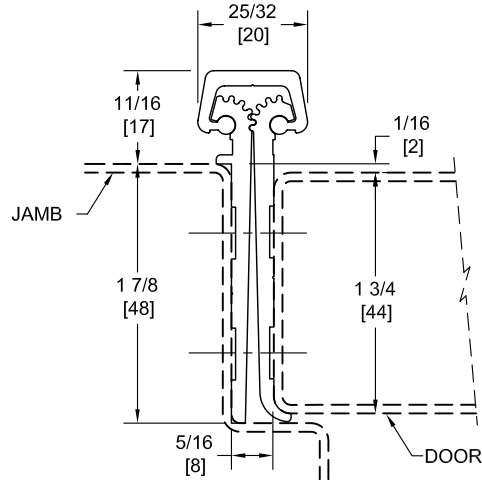
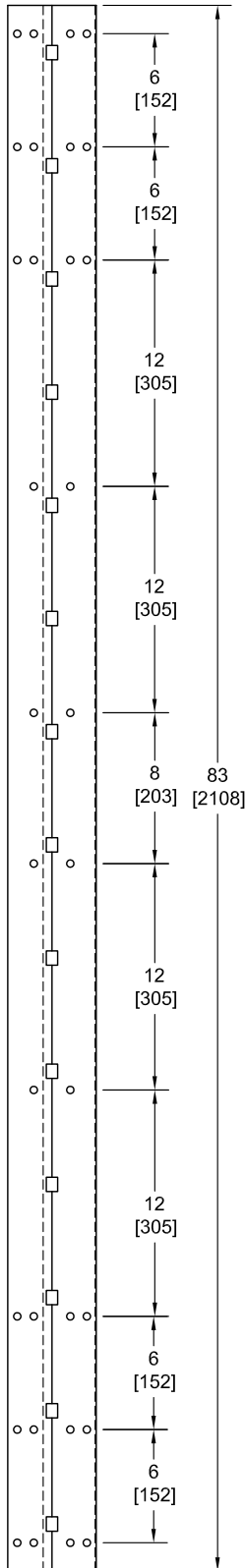
# FM83

## TEMPLATE FULL MORTISE CONTINUOUS GEARED ALUMINUM HINGE

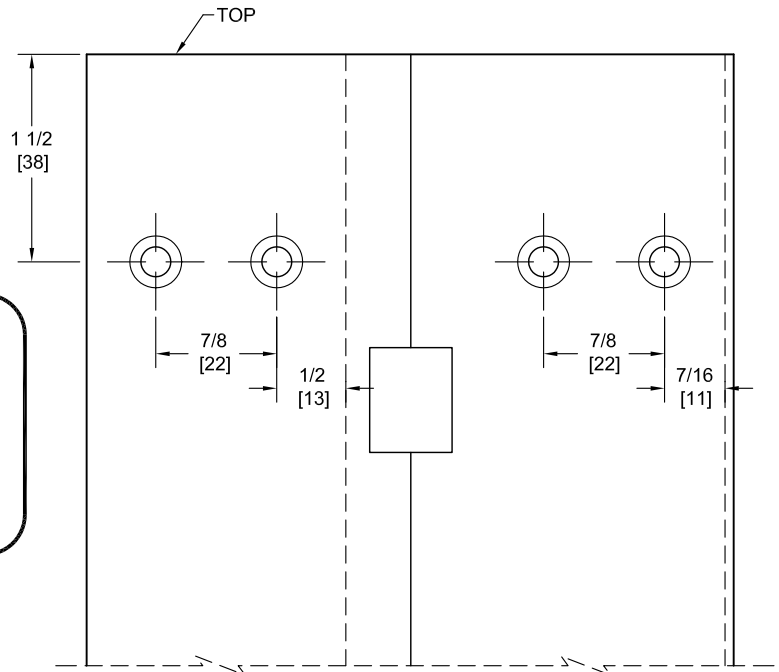
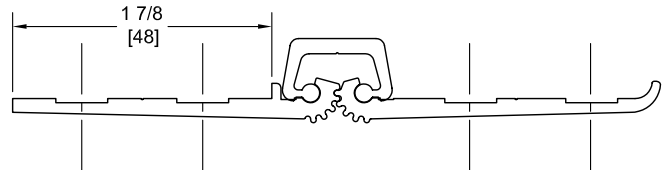


**Fire Rated**  
Classified & Listed to  
meet the requirements of  
Standards UL10B, UL10C,  
UBC7-2, Part I & BS476

**POSITIVE PRESSURE**



DO NOT SCALE



**\*\* CAUTION \*\***  
Due To Frame  
Installation  
Variations,  
Pre-drilling  
For Fasteners  
Is Not  
Recommended

PEMKO Template Full Mortise Continuous Geared Aluminum Hinges CFM83/DFM83 are made to conform to this drawing.

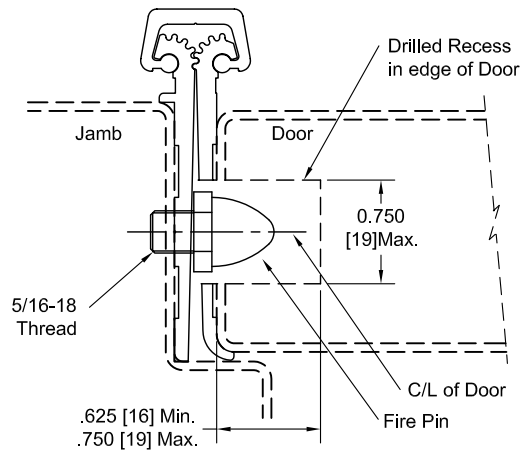
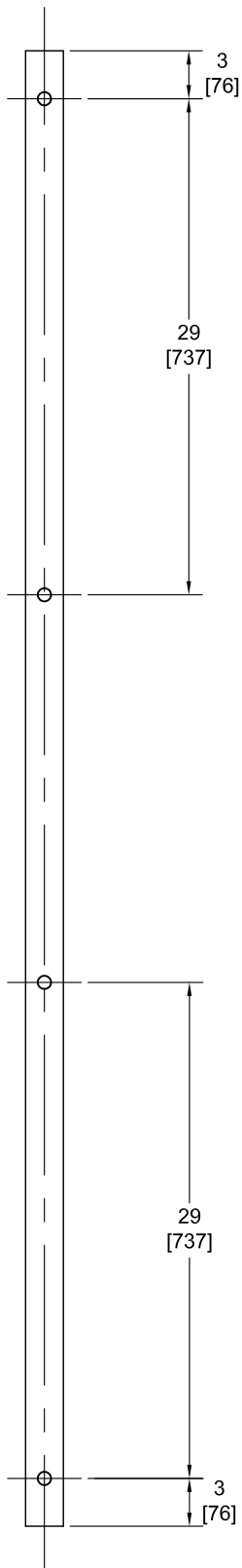
PEMKO CFM83/DFM83 hinges can be supplied with Electric Functions - See Electrical Application Section.

Machine Screw Size - No. 12-24 x 7/16 FHUC Thread-forming.

PEMKO Continuous Geared Aluminum Hinges are Listed for fire applications up to 90 minutes without special preparation; for 3 hour openings using hollow metal doors and hollow metal frames on Masonry/Drywall, Fire Pins (supplied separately) must be used. See back for locations.

Manufacturer reserves the right to make changes without formal notice. Contact Engineering for latest revision

## Fire Pin Application



## Concealed Circuit (CC) Application

SEE ELECTRICAL APPLICATION SECTION  
IN TECHNICAL MANUAL

## Magnetic Monitor (MM) Application

SEE ELECTRICAL APPLICATION SECTION  
IN TECHNICAL MANUAL

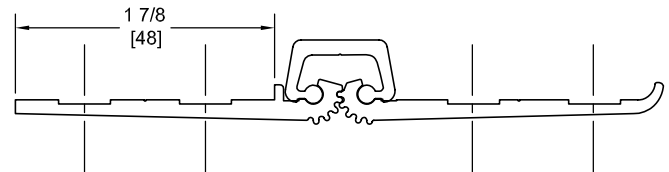
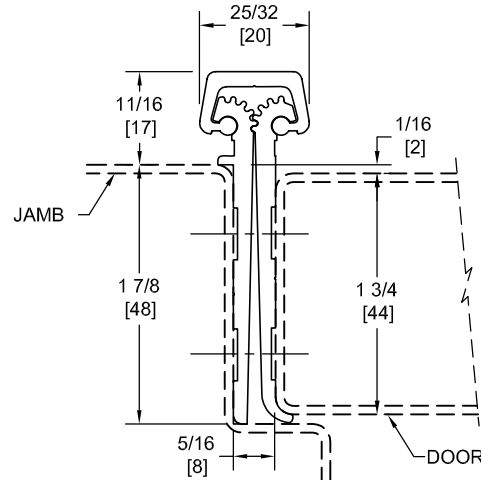
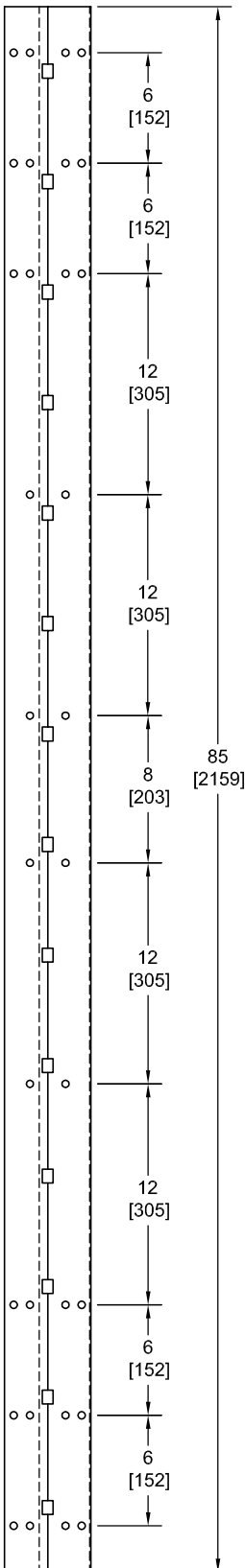
# FM85

## TEMPLATE FULL MORTISE CONTINUOUS GEARED ALUMINUM HINGE

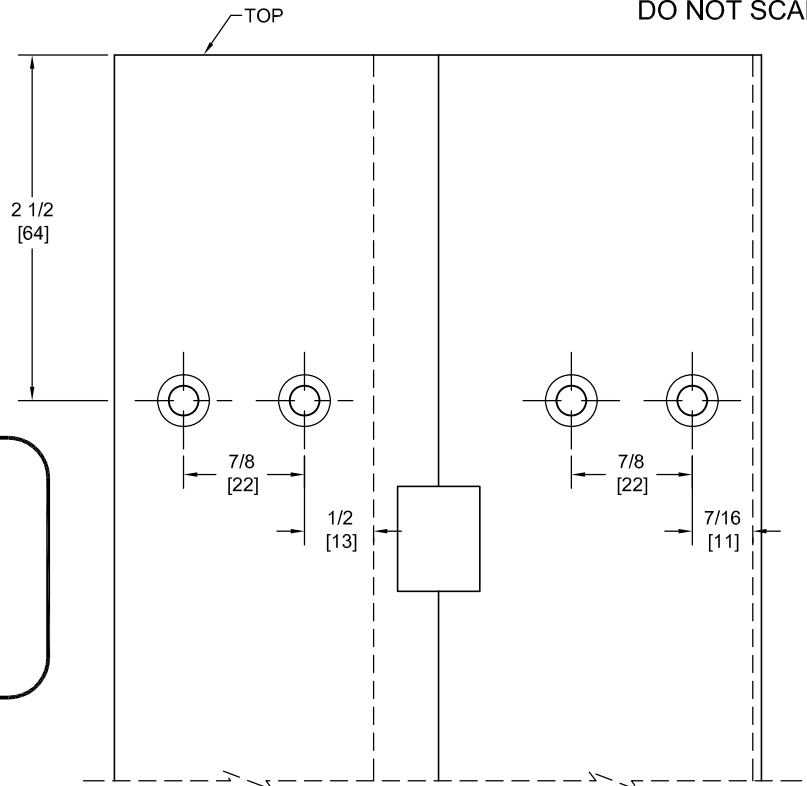


**Fire Rated**  
Classified & Listed to  
meet the requirements of  
Standards UL10B, UL10C,  
UBC7-2, Part I & BS476

**POSITIVE PRESSURE**



DO NOT SCALE



**\*\* CAUTION \*\***  
Due To Frame  
Installation  
Variations,  
Pre-drilling  
For Fasteners  
Is Not  
Recommended

PEMKO Template Full Mortise Continuous Geared Aluminum Hinges CFM85/DFM85 are made to conform to this drawing.

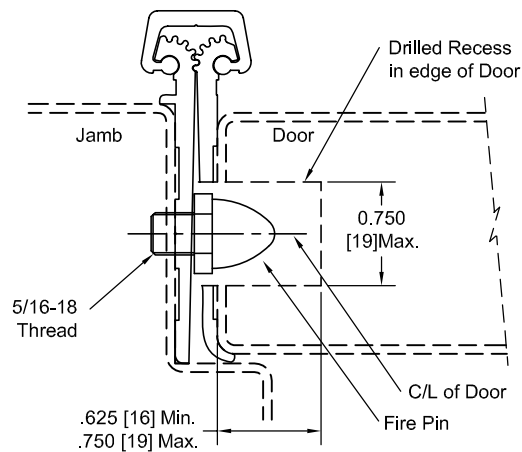
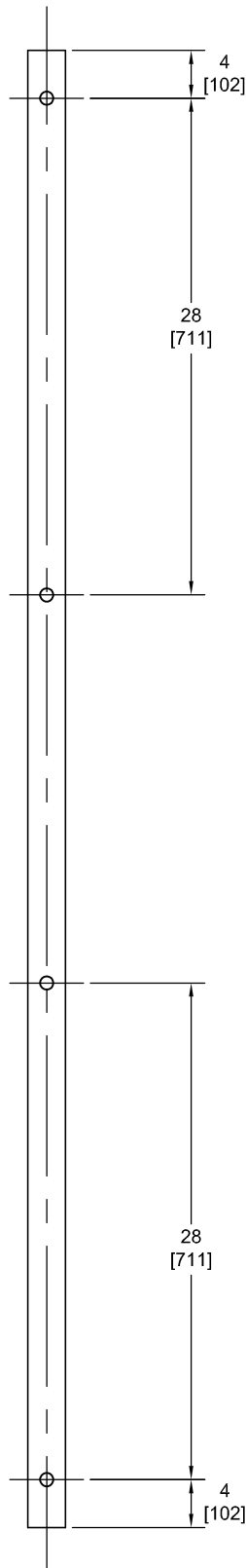
PEMKO CFM85/DFM85 hinges can be supplied with Electric Functions - See Electrical Application Section.

Machine Screw Size - No. 12-24 x 7/16 FHUC Thread-forming.

PEMKO Continuous Geared Aluminum Hinges are Listed for fire applications up to 90 minutes without special preparation; for 3 hour openings using hollow metal doors and hollow metal frames on Masonry/Drywall, Fire Pins (supplied separately) must be used. See back for locations.

Manufacturer reserves the right to make changes without formal notice. Contact Engineering for latest revision.

## Fire Pin Application



## Concealed Circuit (CC) Application

SEE ELECTRICAL APPLICATION SECTION  
IN TECHNICAL MANUAL

## Magnetic Monitor (MM) Application

SEE ELECTRICAL APPLICATION SECTION  
IN TECHNICAL MANUAL

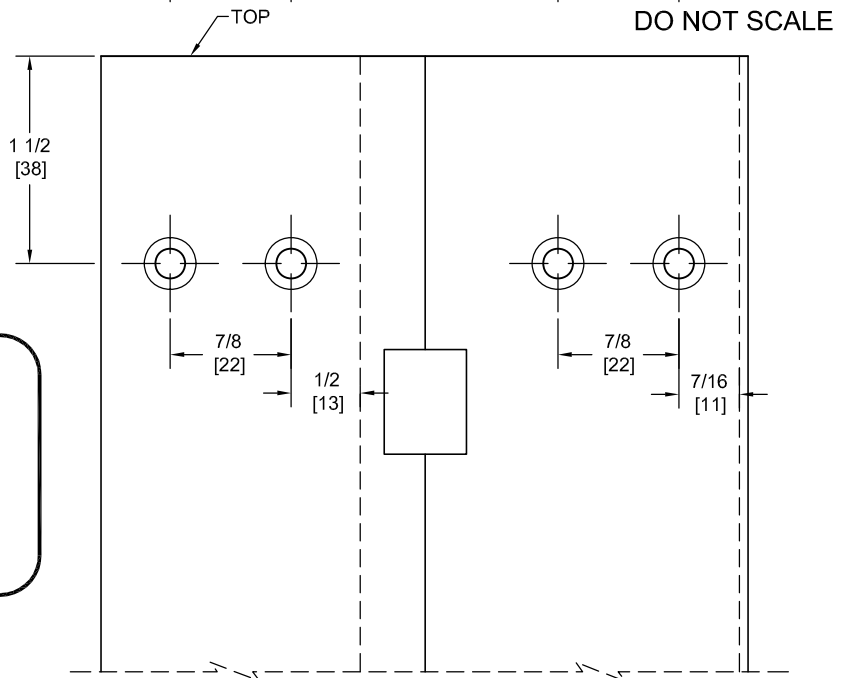
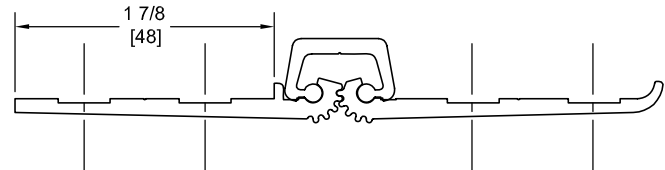
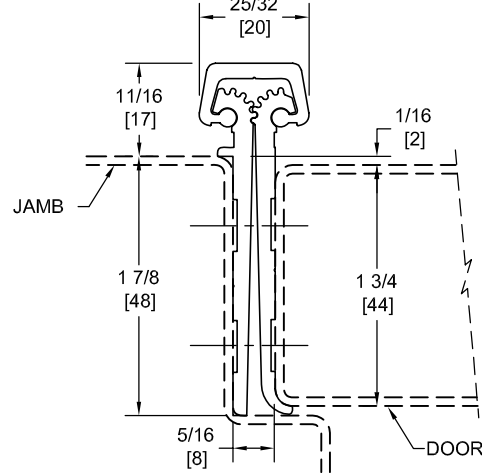
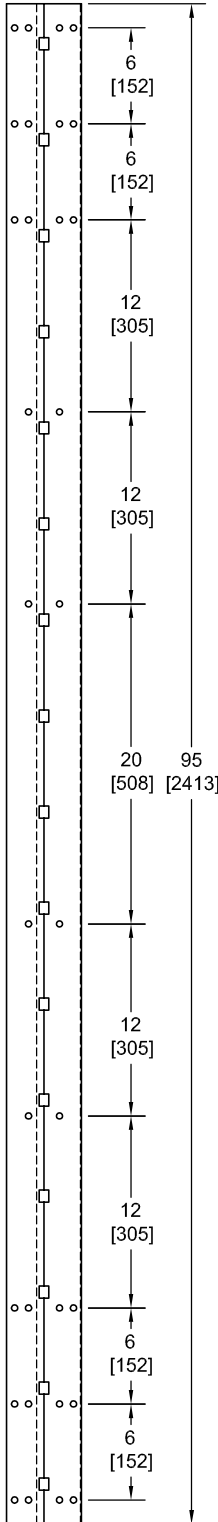
# FM95

## TEMPLATE FULL MORTISE CONTINUOUS GEARED ALUMINUM HINGE



**Fire Rated**  
Classified & Listed to  
meet the requirements of  
Standards UL10B, UL10C,  
UBC7-2, Part I & BS476

**POSITIVE PRESSURE**



PEMKO Template Full Mortise Continuous Geared Aluminum Hinges CFM95/DFM95 are made to conform to this drawing.

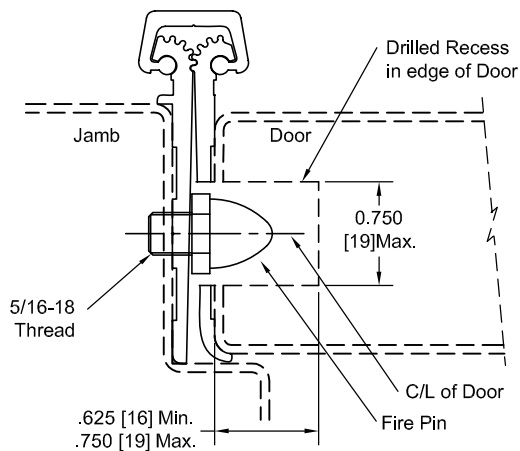
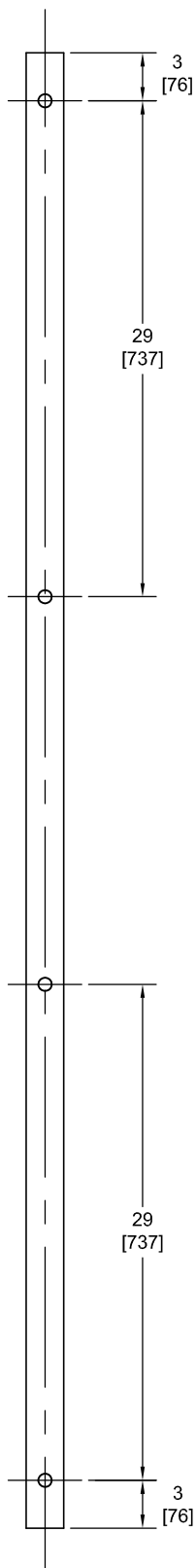
PEMKO CFM95/DFM95 hinges can be supplied with Electric Functions - See Electrical Application Section.

Machine Screw Size - No. 12-24 x 7/16 FHUC Thread-forming.

PEMKO Continuous Geared Aluminum Hinges are Listed for fire applications up to 90 minutes without special preparation; for 3 hour openings using hollow metal doors and hollow metal frames on Masonry/Drywall, Fire Pins (supplied separately) must be used. See back for locations.

Manufacturer reserves the right to make changes without formal notice. Contact Engineering for latest revision.

## Fire Pin Application



## Concealed Circuit (CC) Application

SEE ELECTRICAL APPLICATION SECTION  
IN TECHNICAL MANUAL

## Magnetic Monitor (MM) Application

SEE ELECTRICAL APPLICATION SECTION  
IN TECHNICAL MANUAL

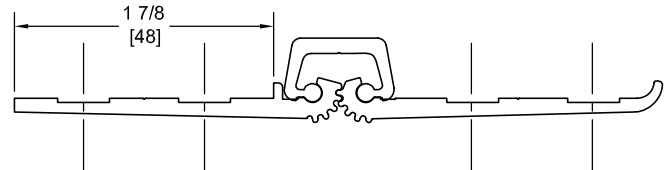
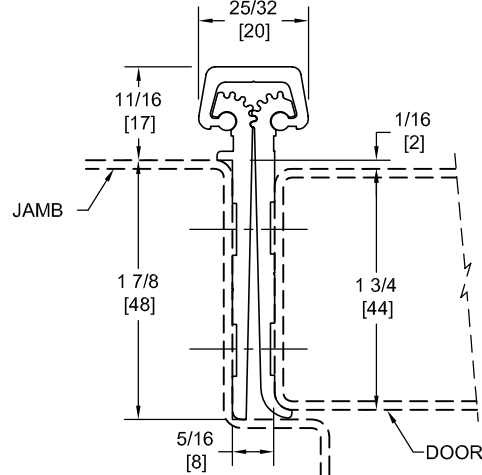
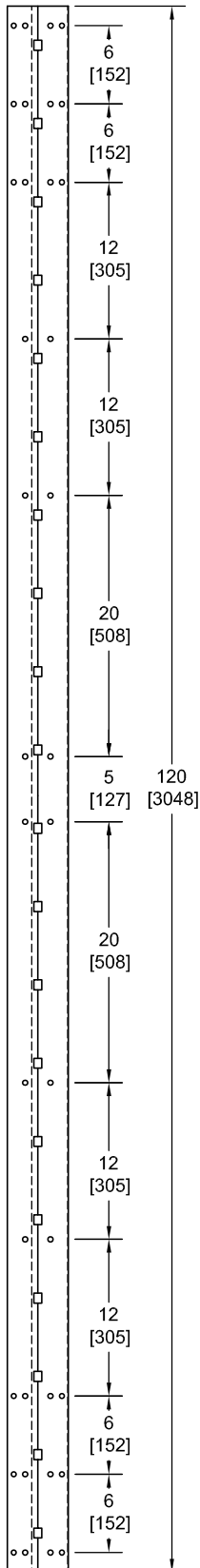
# FM120

## TEMPLATE FULL MORTISE CONTINUOUS GEARED ALUMINUM HINGE

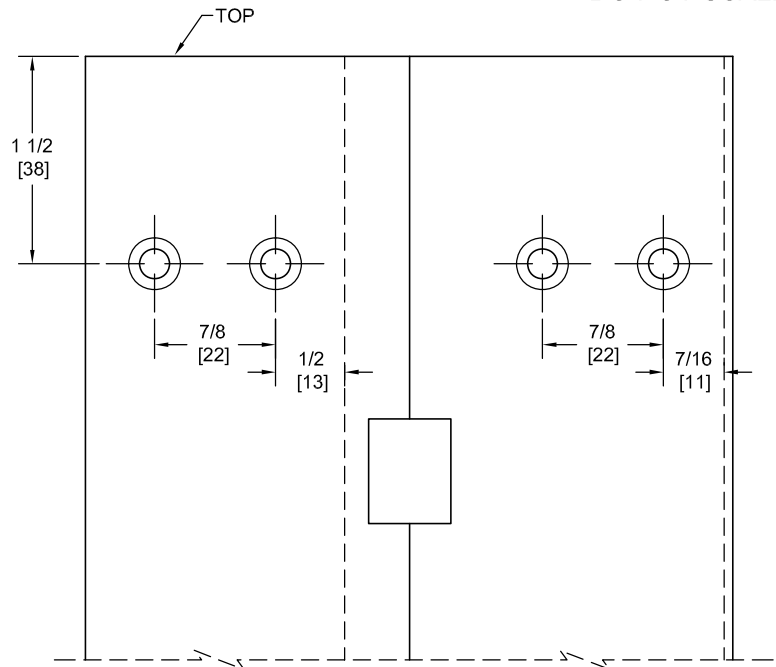


**Fire Rated**  
Classified & Listed to  
meet the requirements of  
Standards UL10B, UL10C,  
UBC7-2, Part I & BS476

**POSITIVE PRESSURE**



DO NOT SCALE



**\*\* CAUTION \*\***  
Due To Frame  
Installation  
Variations,  
Pre-drilling  
For Fasteners  
Is Not  
Recommended

PEMKO Template Full Mortise Continuous Geared Aluminum Hinges CFM120/DFM120 are made to conform to this drawing.

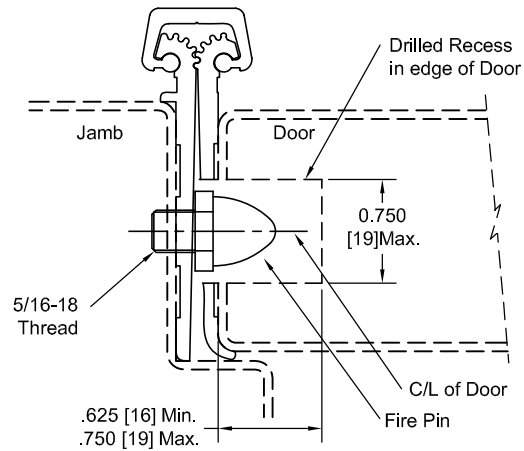
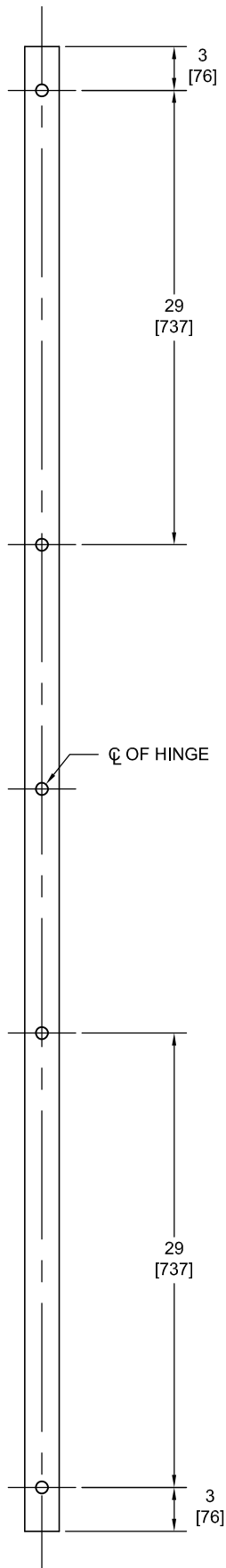
PEMKO CFM120/DFM120 hinges can be supplied with Electric Functions - See Electrical Application Section.

Machine Screw Size - No. 12-24 x 7/16 FHUC Thread-forming.

PEMKO Continuous Geared Aluminum Hinges are Listed for fire applications up to 90 minutes without special preparation; for 3 hour openings using hollow metal doors and hollow metal frames on Masonry/Drywall, Fire Pins (supplied separately) must be used. See back for locations.

Manufacturer reserves the right to make changes without formal notice. Contact Engineering for latest revision.

## Fire Pin Application



## Concealed Circuit (CC) Application

SEE ELECTRICAL APPLICATION SECTION  
IN TECHNICAL MANUAL

## Magnetic Monitor (MM) Application

SEE ELECTRICAL APPLICATION SECTION  
IN TECHNICAL MANUAL