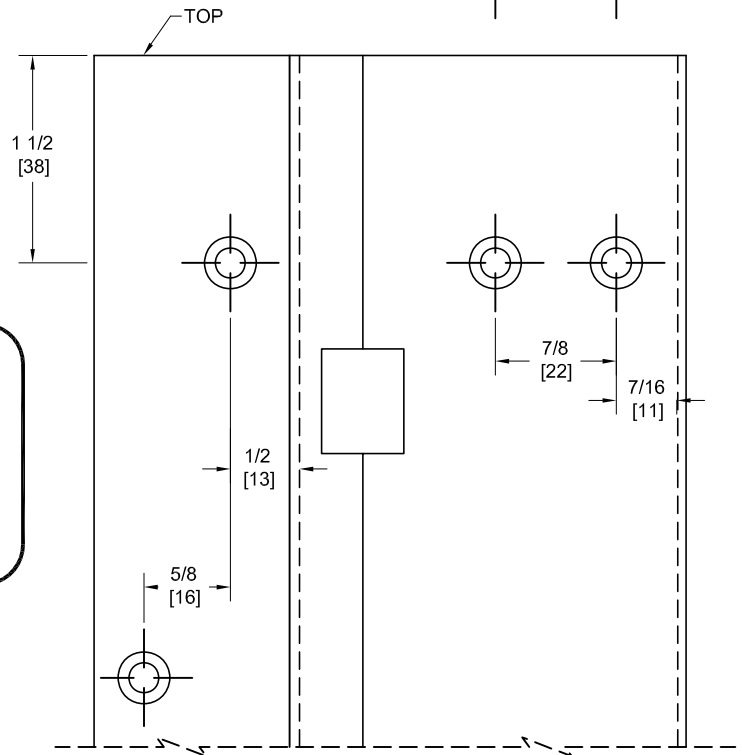
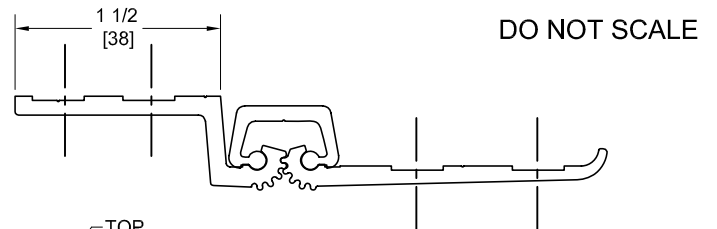
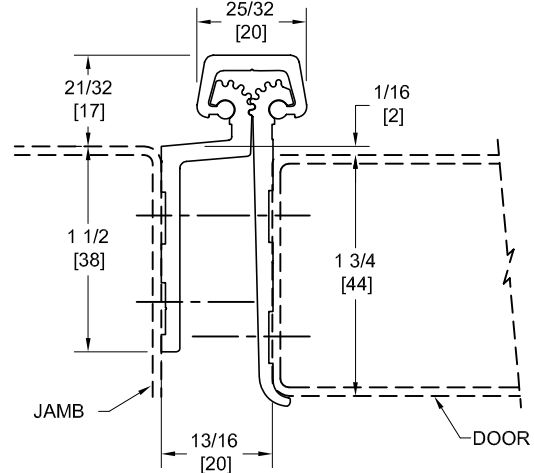
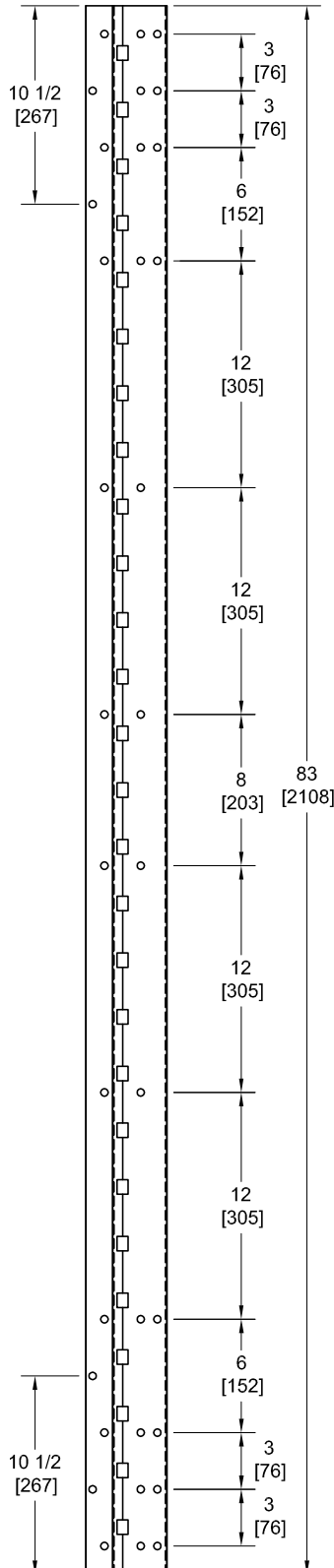


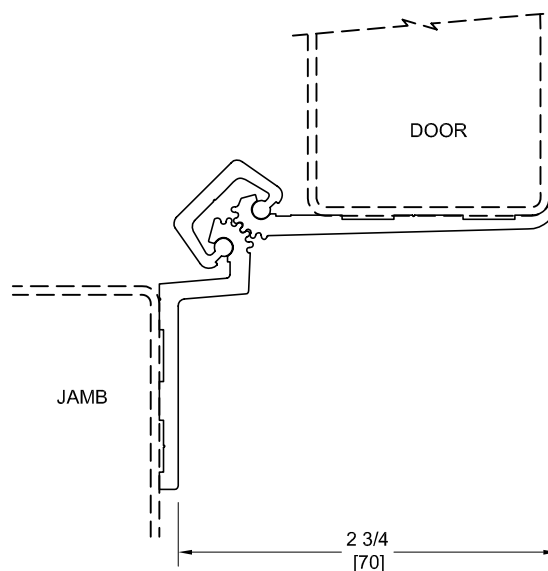
FM83SFHD

TEMPLATE FULL MORTISE CONTINUOUS GEARED ALUMINUM HINGE

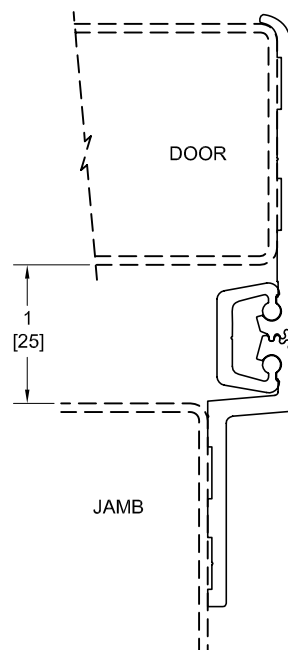


**** CAUTION ****
Due To Frame
Installation
Variations,
Pre-drilling
For Fasteners
Is Not
Recommended

Opening Clearances at 90°



Opening Clearances at 180°

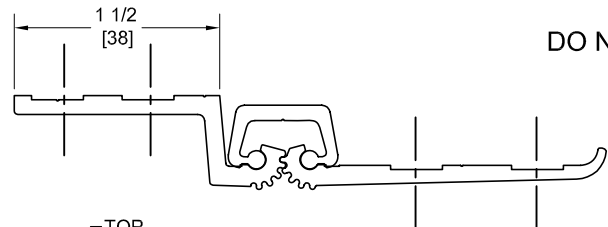
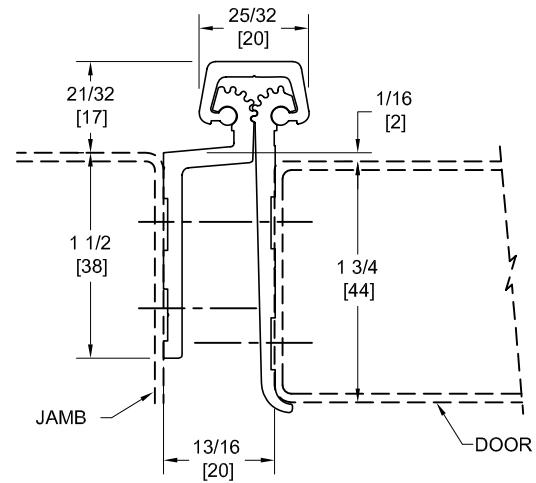
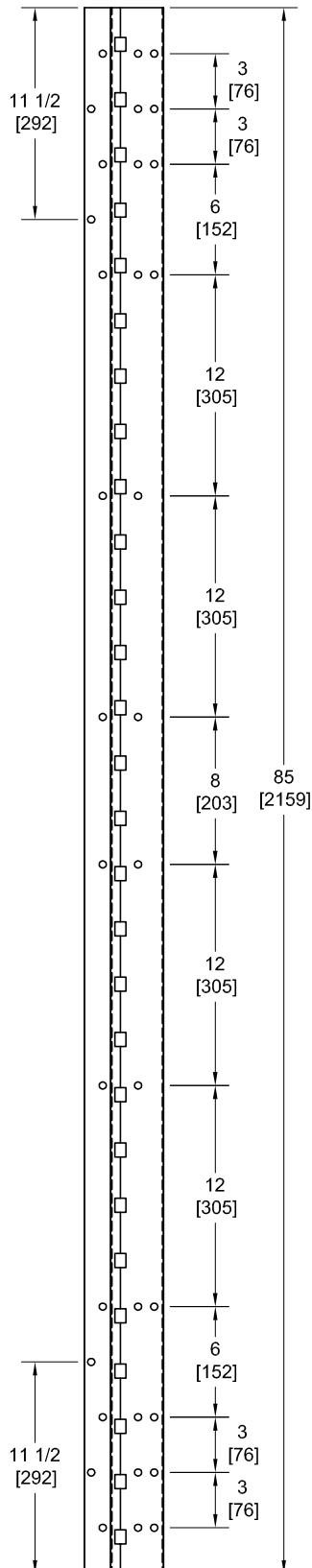


Concealed Circuit (CC) Application
Not Available

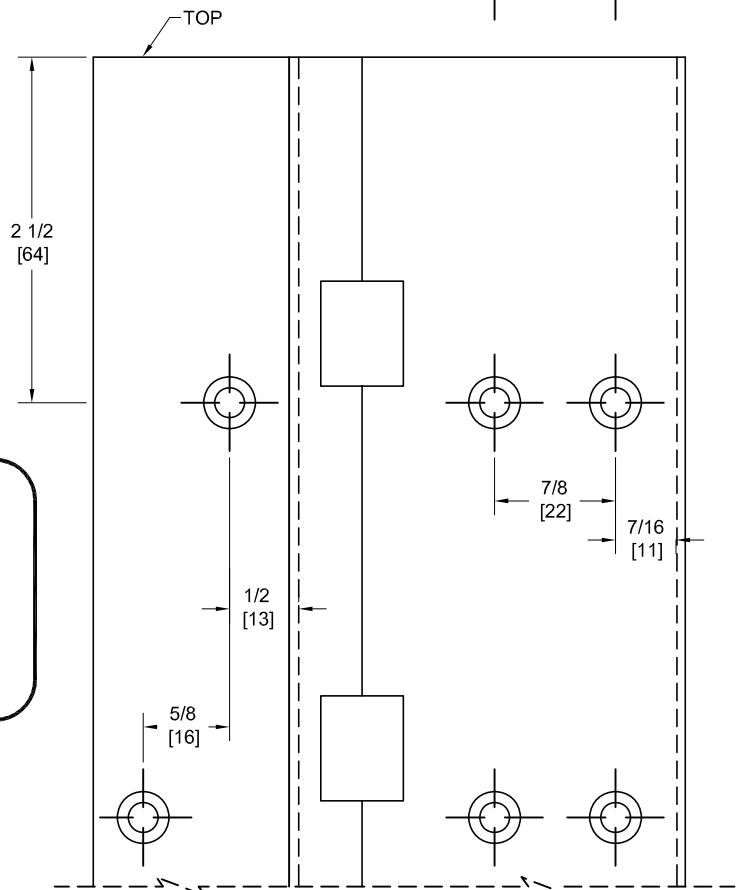
Magnetic Monitor (MM) Application
Not Available

FM85SFHD

TEMPLATE FULL MORTISE CONTINUOUS GEARED ALUMINUM HINGE

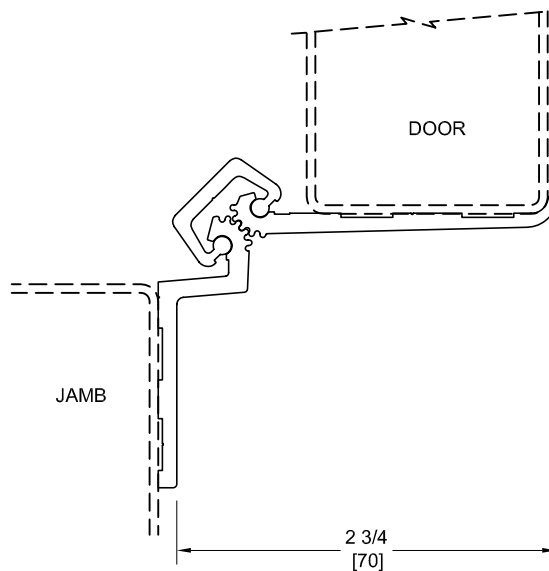


DO NOT SCALE

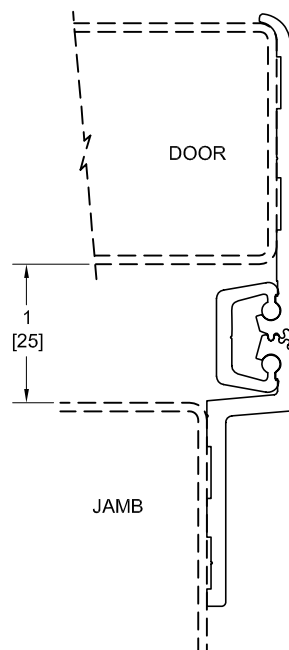


**** CAUTION ****
Due To Frame
Installation
Variations,
Pre-drilling
For Fasteners
Is Not
Recommended

Opening Clearances at 90°



Opening Clearances at 180°

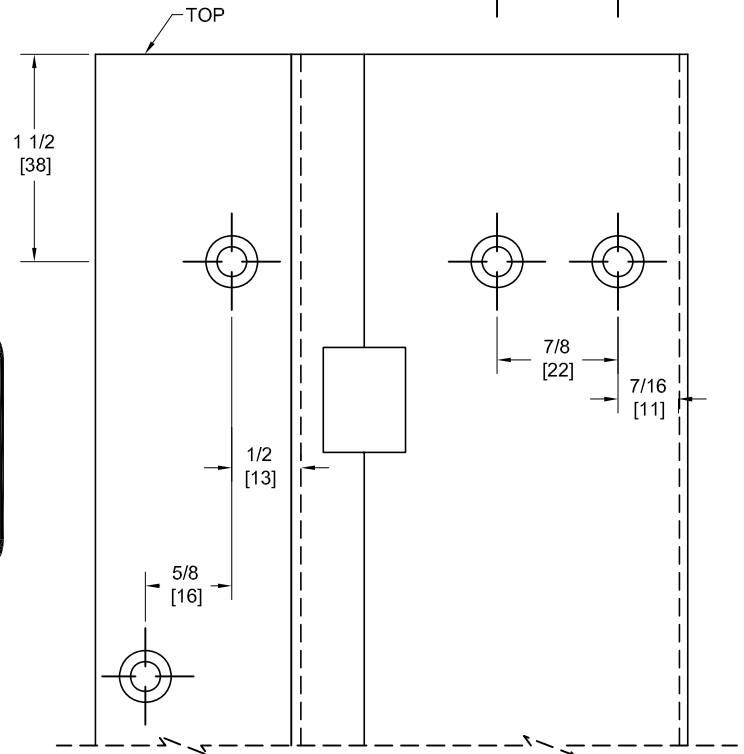
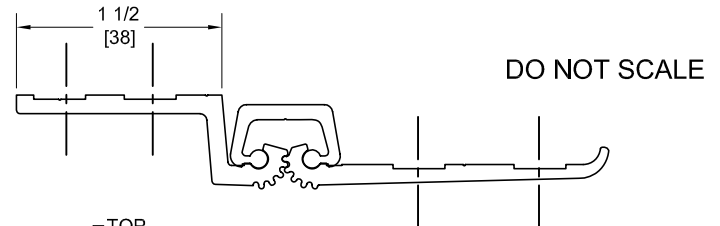
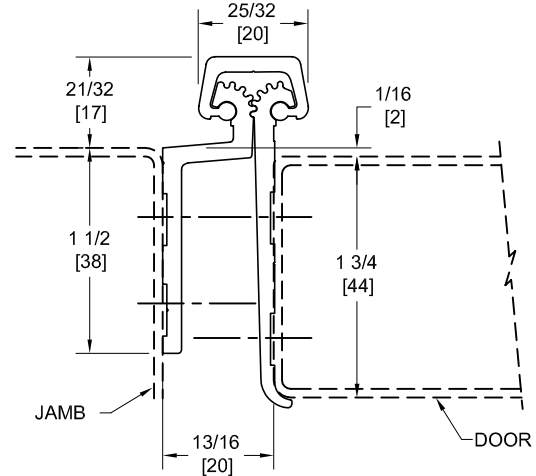
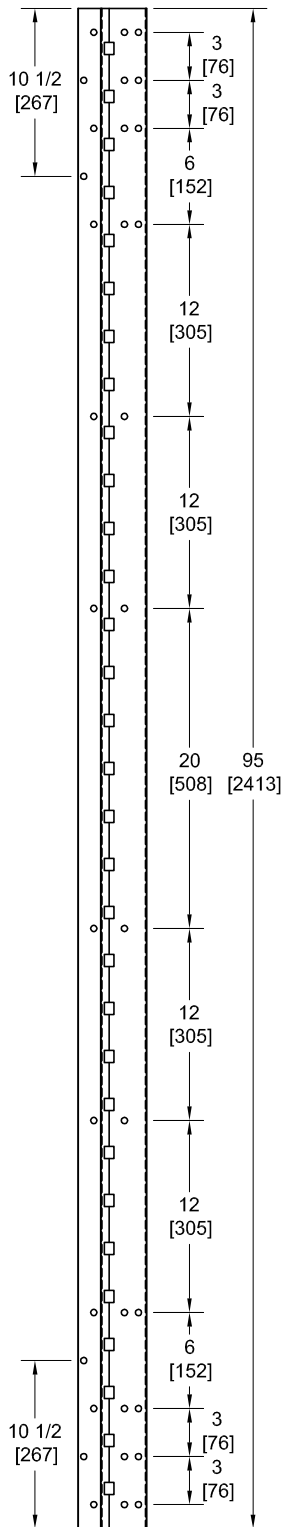


Concealed Circuit (CC) Application
Not Available

Magnetic Monitor (MM) Application
Not Available

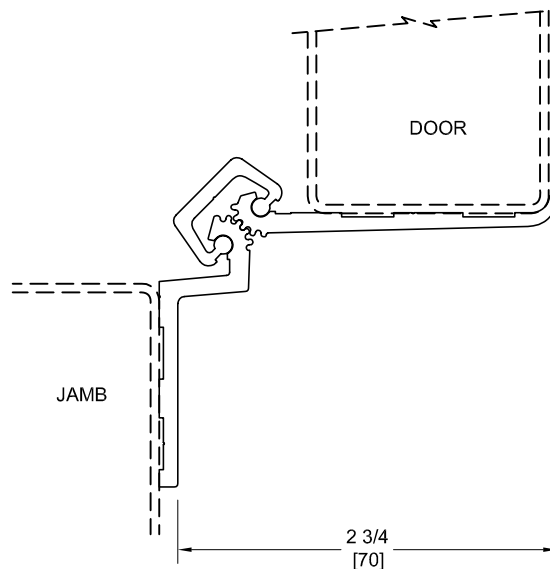
FM95SFHD

TEMPLATE FULL MORTISE CONTINUOUS GEARED ALUMINUM HINGE

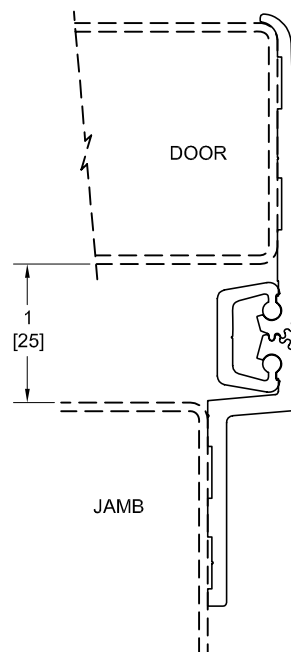


**** CAUTION ****
Due To Frame
Installation
Variations,
Pre-drilling
For Fasteners
Is Not
Recommended

Opening Clearances at 90°



Opening Clearances at 180°



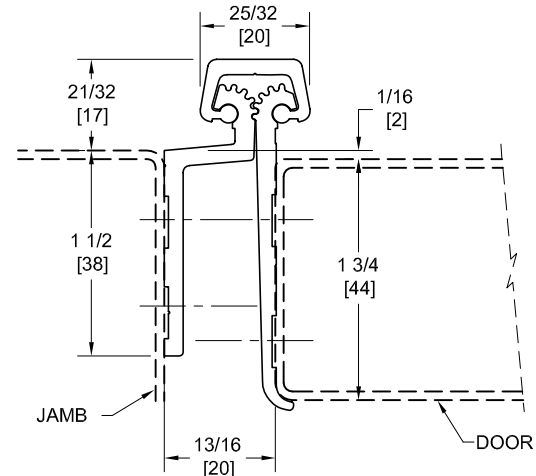
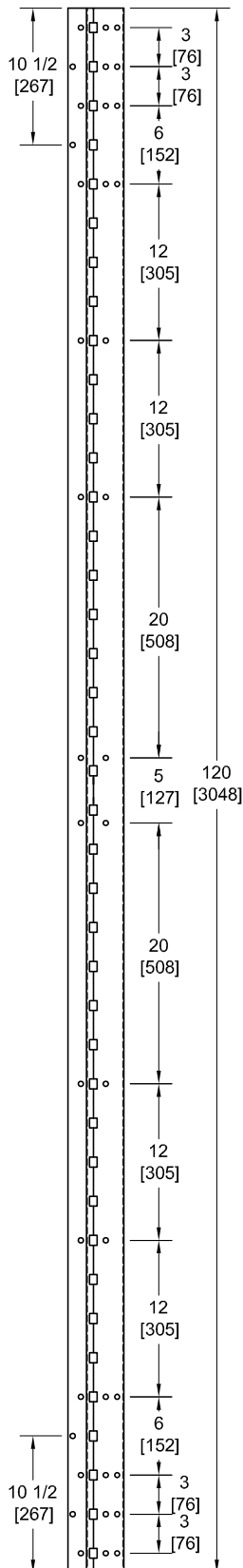
Concealed Circuit (CC) Application
Not Available

Magnetic Monitor (MM) Application
Not Available

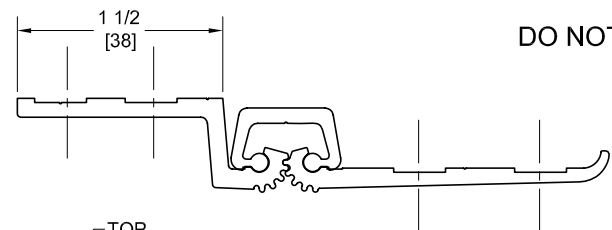
Effective Date: November 2003

FM120SFHD

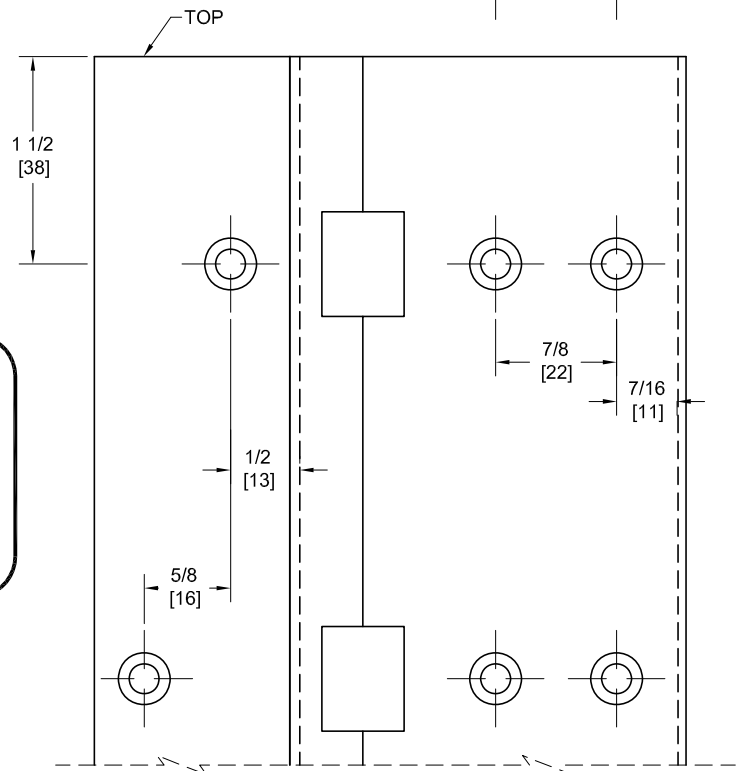
TEMPLATE FULL MORTISE CONTINUOUS GEARED ALUMINUM HINGE



DO NOT SCALE



**** CAUTION ****
Due To Frame
Installation
Variations,
Pre-drilling
For Fasteners
Is Not
Recommended

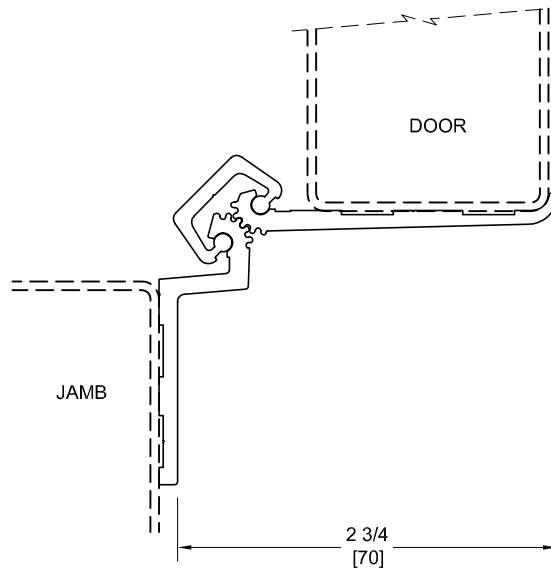


PEMKO Template Full Mortise Continuous Geared Aluminum Hinges CFM120SFHD/DFM120SFHD are made to conform to this drawing.
Machine Screw Size - No. 12-24 x 7/16 FHUC Thread-forming.

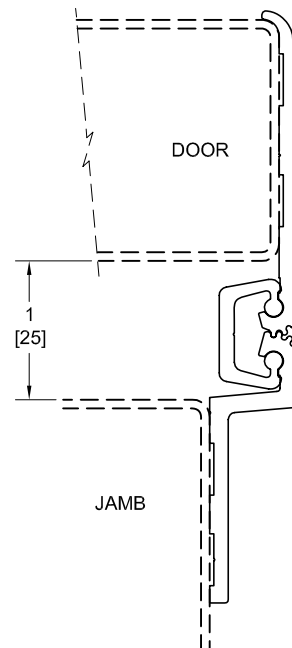
Manufacturer reserves the right to make changes without formal notice.

Continued on Back...

Opening Clearances at 90°



Opening Clearances at 180°



Concealed Circuit (CC) Application
Not Available

Magnetic Monitor (MM) Application
Not Available