

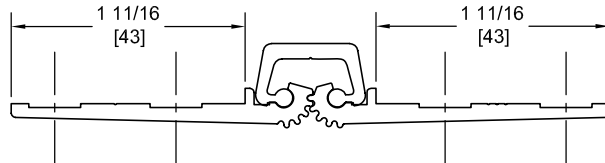
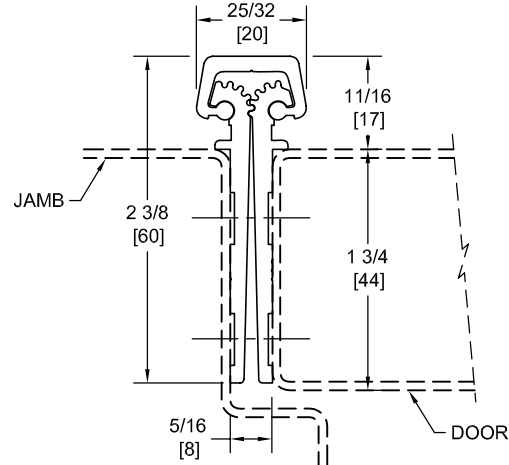
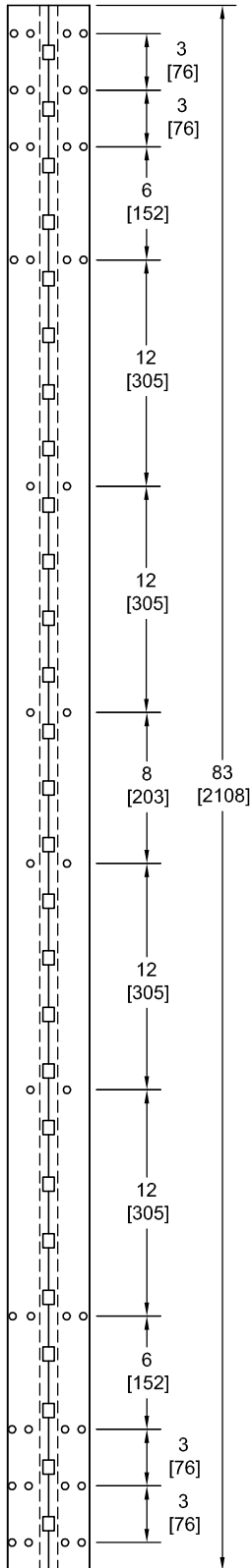
FM83SLF-HD

TEMPLATE FULL MORTISE CONTINUOUS GEARED ALUMINUM HINGE



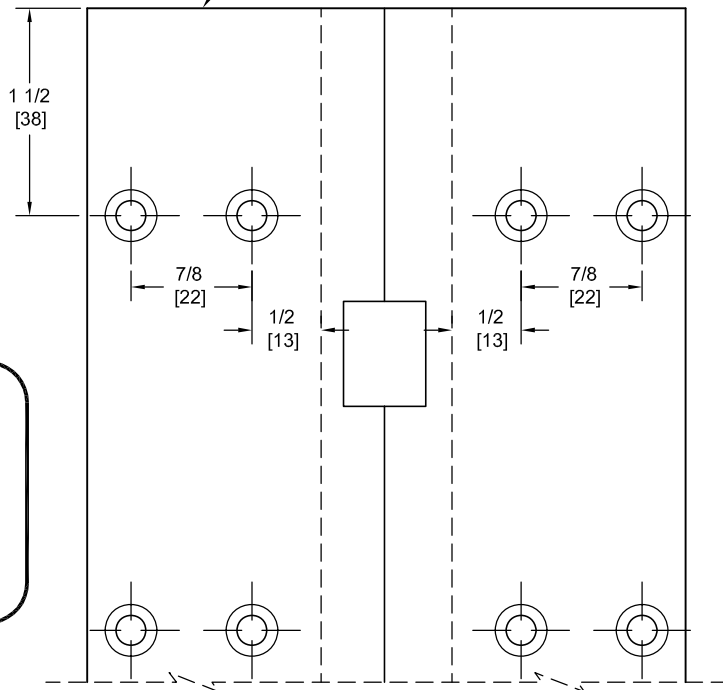
Fire Rated
Classified & Listed to
meet the requirements of
Standards UL10B, UL10C,
UBC7-2, Part I & BS476

POSITIVE PRESSURE



TOP

DO NOT SCALE



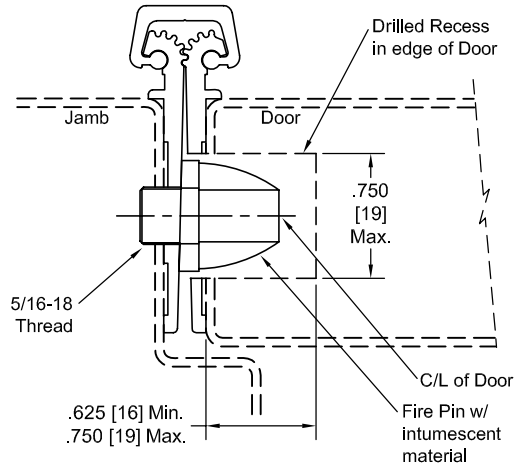
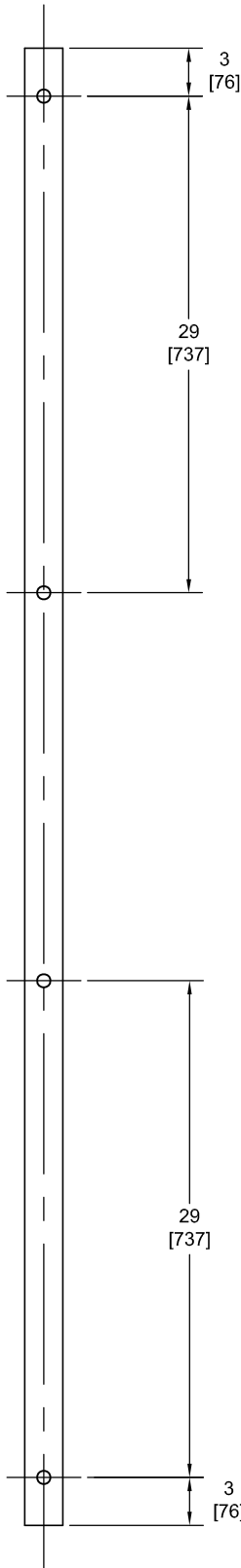
**** CAUTION ****
Due To Frame
Installation
Variations,
Pre-drilling
For Fasteners
Is Not
Recommended

PEMKO Template Full Mortise Continuous Geared Aluminum Hinges CFM83SLF-HD/DFM83SLF-HD are made to conform to this drawing. PEMKO CFM83SLF-HD/DFM83SLF-HD hinges can be supplied with Electric Functions - See Electrical Application Section.

Machine Screw Size - No. 12-24 x 7/16 FHUC Thread-forming.

PEMKO Continuous Geared Aluminum Hinges are Listed for fire applications up to 90 minutes without special preparation; for 3 hour openings using hollow metal doors and hollow metal frames on Masonry/Drywall, Fire Pins (supplied separately) must be used. See back for locations.

Fire Pin Application



Concealed Circuit (CC) Application

SEE ELECTRICAL APPLICATION SECTION
IN TECHNICAL MANUAL

Magnetic Monitor (MM) Application

SEE ELECTRICAL APPLICATION SECTION
IN TECHNICAL MANUAL

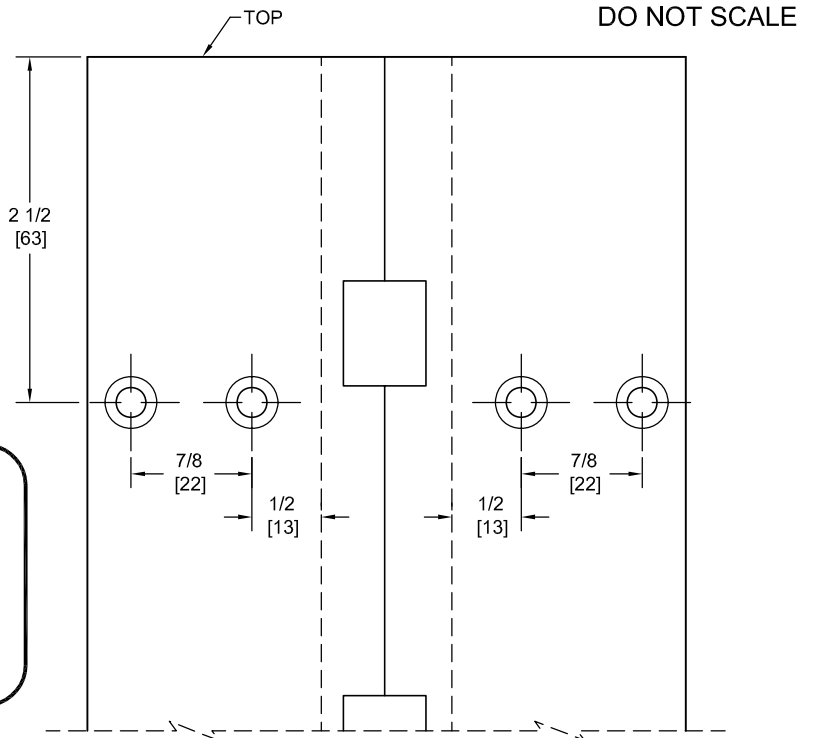
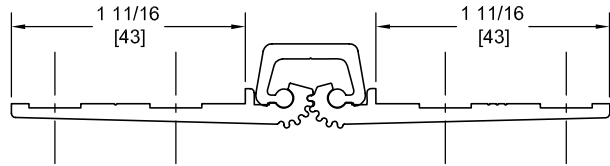
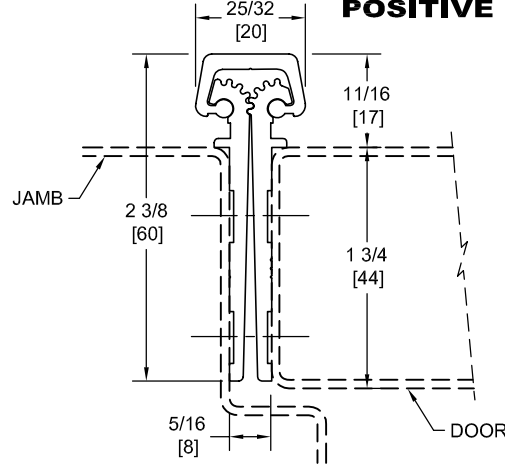
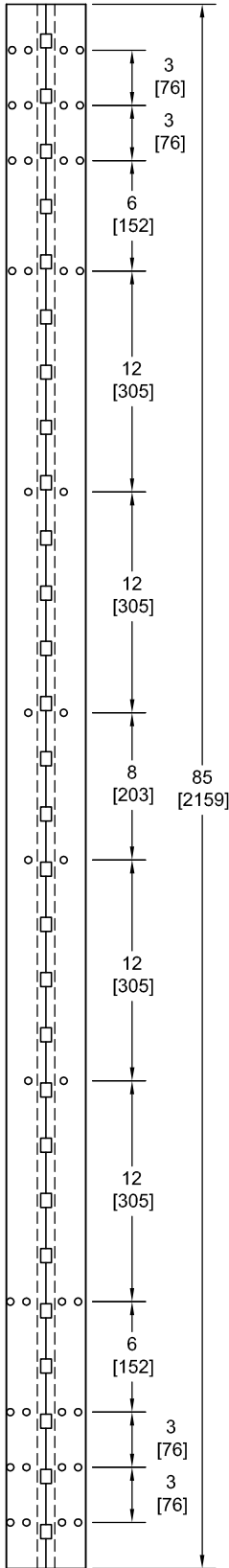
FM85SLF-HD

TEMPLATE FULL MORTISE CONTINUOUS GEARED ALUMINUM HINGE



Fire Rated
Classified & Listed to
meet the requirements of
Standards UL10B, UL10C,
UBC7-2, Part I & BS476

POSITIVE PRESSURE



**** CAUTION ****
Due To Frame
Installation
Variations,
Pre-drilling
For Fasteners
Is Not
Recommended

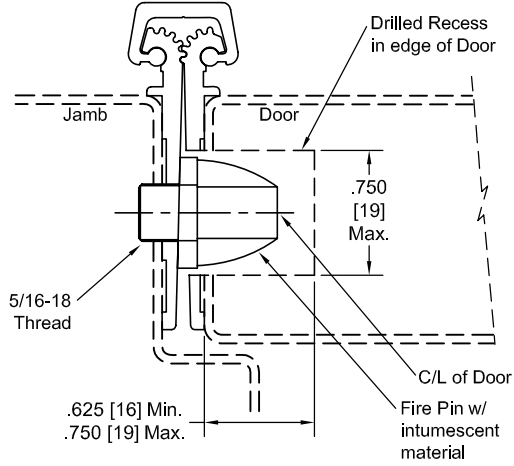
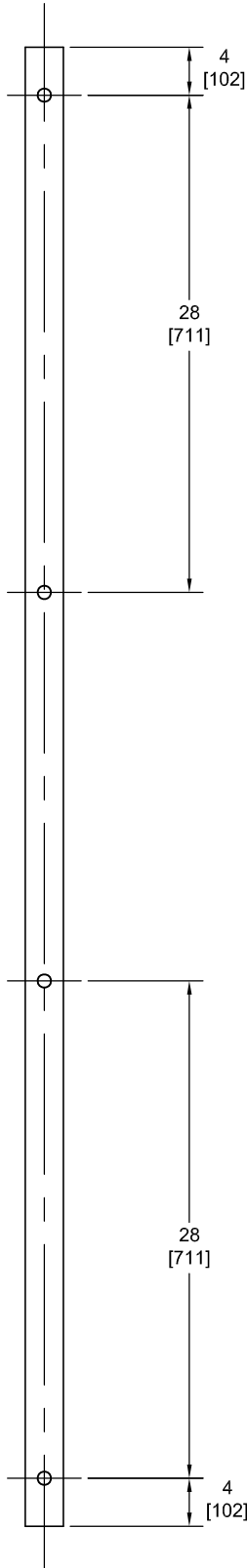
PEMKO Template Full Mortise Continuous Geared Aluminum Hinges CFM85SLF-HD/DFM85SLF-HD are made to conform to this drawing.

PEMKO CFM85SLF-HD/DFM85SLF-HD hinges can be supplied with Electric Functions - See Electrical Application Section.

Machine Screw Size - No. 12-24 x 7/16 FHUC Thread-forming.

PEMKO Continuous Geared Aluminum Hinges are Listed for fire applications up to 90 minutes without special preparation; for 3 hour openings using hollow metal doors and hollow metal frames on Masonry/Drywall, Fire Pins (supplied separately) must be used. See back for locations.

Fire Pin Application



Concealed Circuit (CC) Application

SEE ELECTRICAL APPLICATION SECTION
IN TECHNICAL MANUAL

Magnetic Monitor (MM) Application

SEE ELECTRICAL APPLICATION SECTION
IN TECHNICAL MANUAL

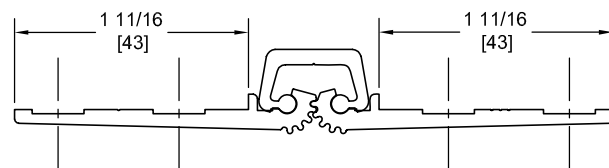
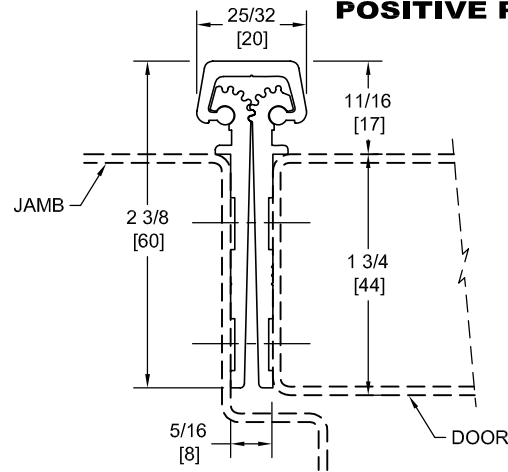
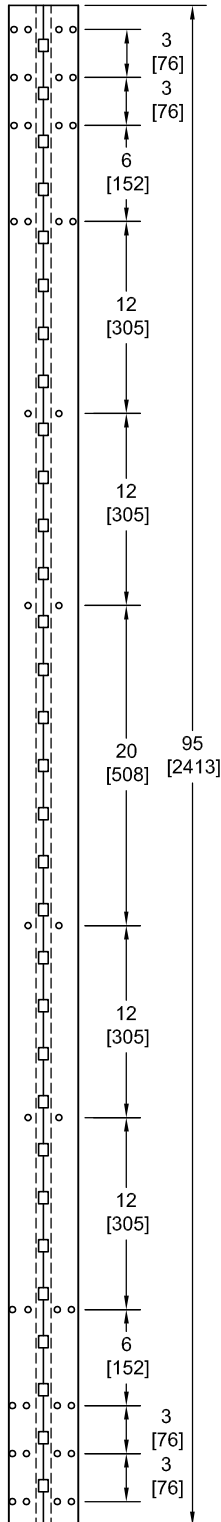
FM95SLF-HD

TEMPLATE FULL MORTISE CONTINUOUS GEARED ALUMINUM HINGE



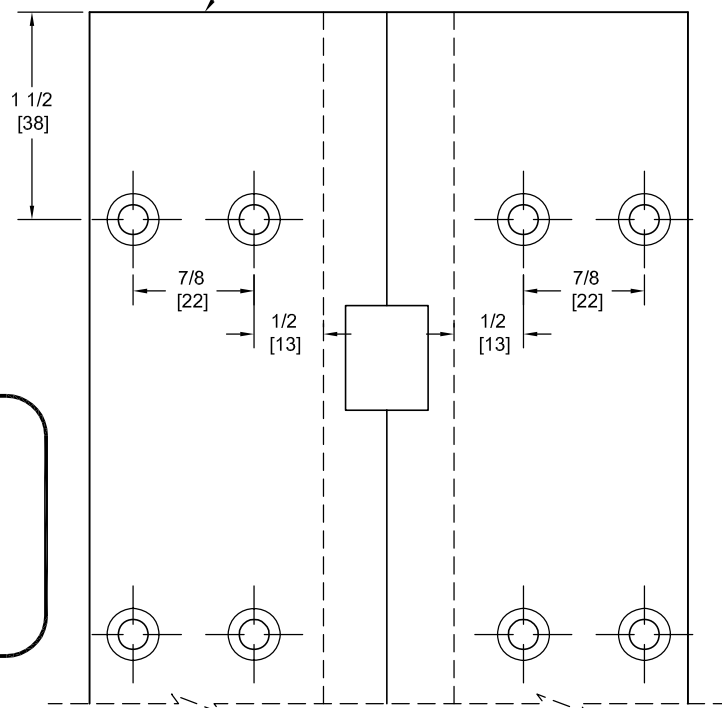
Fire Rated
Classified & Listed to
meet the requirements of
Standards UL10B, UL10C,
UBC7-2, Part I & BS476

POSITIVE PRESSURE



TOP

DO NOT SCALE



**** CAUTION ****
Due To Frame
Installation
Variations,
Pre-drilling
For Fasteners
Is Not
Recommended

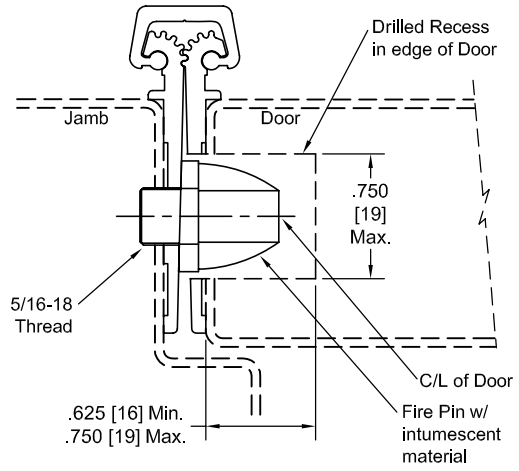
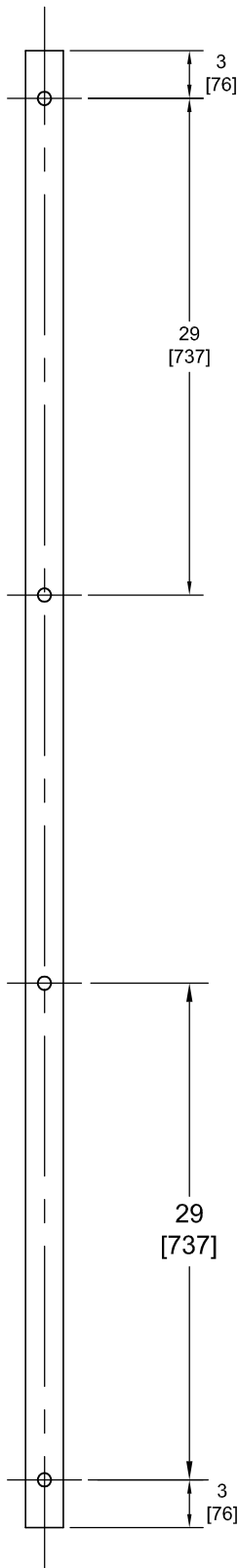
PEMKO Template Full Mortise Continuous Geared Aluminum Hinges CFM95SLF-HD/DFM95SLF-HD are made to conform to this drawing.

PEMKO CFM95SLF-HD/DFM95SLF-HD hinges can be supplied with Electric Functions - See Electrical Application Section.

Machine Screw Size - No. 12-24 x 7/16 FHUC Thread-forming.

PEMKO Continuous Geared Aluminum Hinges are Listed for fire applications up to 90 minutes without special preparation; for 3 hour openings using hollow metal doors and hollow metal frames on Masonry/Drywall, Fire Pins (supplied separately) must be used. See back for locations.

Fire Pin Application



Concealed Circuit (CC) Application

SEE ELECTRICAL APPLICATION SECTION
IN TECHNICAL MANUAL

Magnetic Monitor (MM) Application

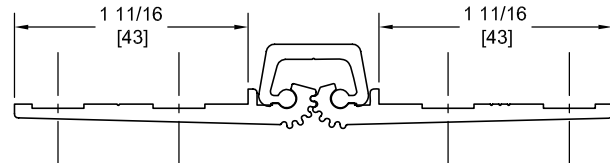
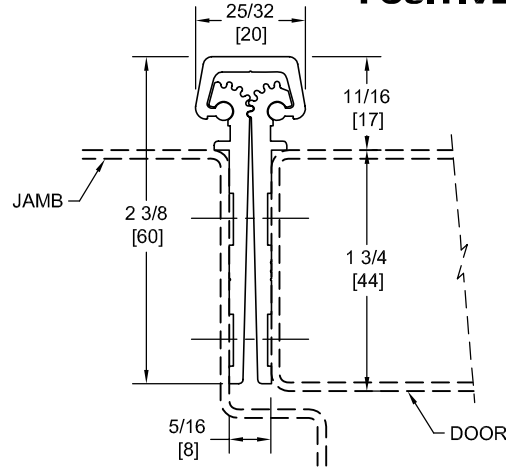
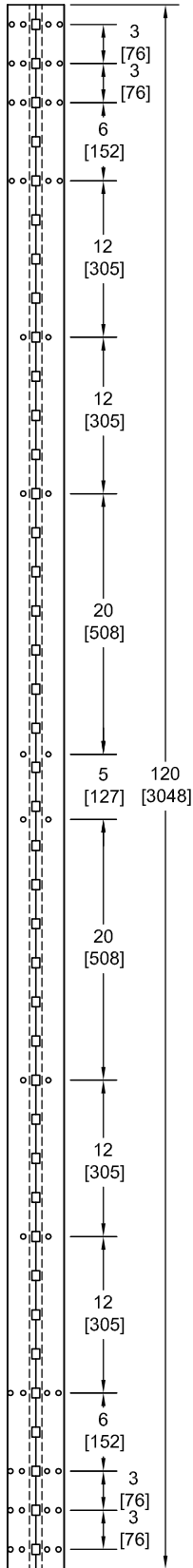
SEE ELECTRICAL APPLICATION SECTION
IN TECHNICAL MANUAL

FM120SLF-HD
TEMPLATE FULL MORTISE CONTINUOUS GEARED ALUMINUM HINGE

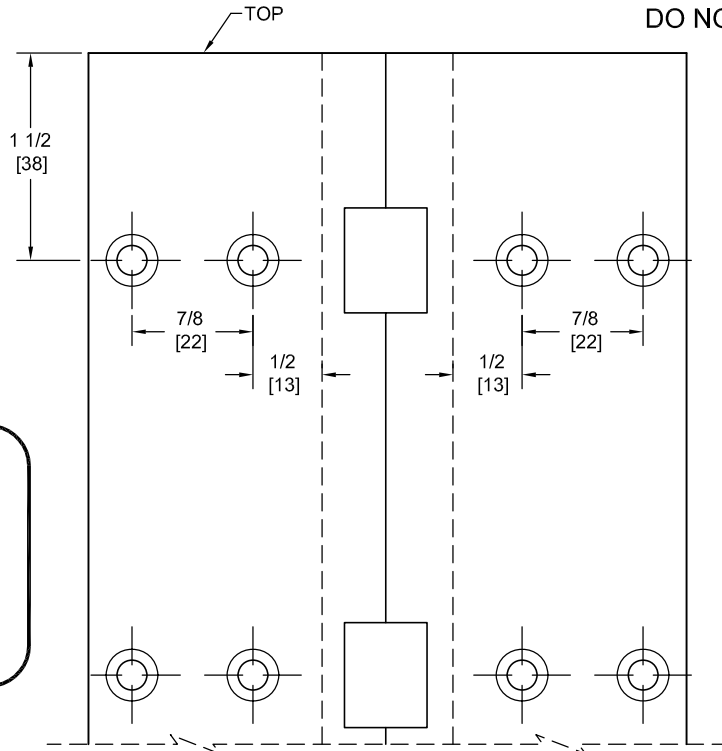


Fire Rated
Classified & Listed to
meet the requirements of
Standards UL10B, UL10C,
UBC7-2, Part I & BS476

POSITIVE PRESSURE



DO NOT SCALE



**** CAUTION ****
Due To Frame
Installation
Variations,
Pre-drilling
For Fasteners
Is Not
Recommended

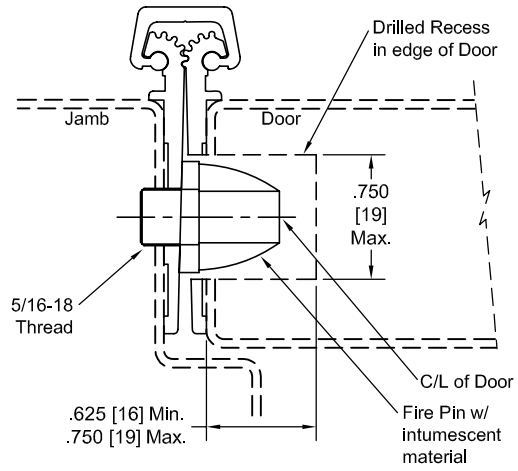
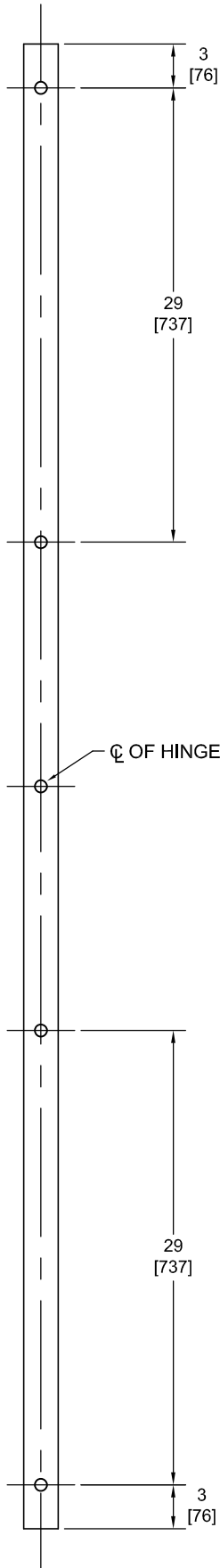
PEMKO Template Full Mortise Continuous Geared Aluminum Hinges CFM120SLF-HD/DFM120SLF-HD are made to conform to this drawing.

PEMKO CFM120SLF-HD/DFM120SLF-HD hinges can be supplied with Electric Functions - See Electrical Application Section.

Machine Screw Size - No. 12-24 x 7/16 FHUC Thread-forming.

PEMKO Continuous Geared Aluminum Hinges are Listed for fire applications up to 90 minutes without special preparation; for 3 hour openings using hollow metal doors and hollow metal frames on Masonry/Drywall, Fire Pins (supplied separately) must be used. See back for locations.

Fire Pin Application



Concealed Circuit (CC) Application

SEE ELECTRICAL APPLICATION SECTION
IN TECHNICAL MANUAL

Magnetic Monitor (MM) Application

SEE ELECTRICAL APPLICATION SECTION
IN TECHNICAL MANUAL