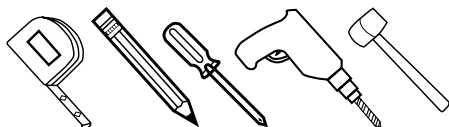




**Trademark
HARDWARE**

Installation Guide

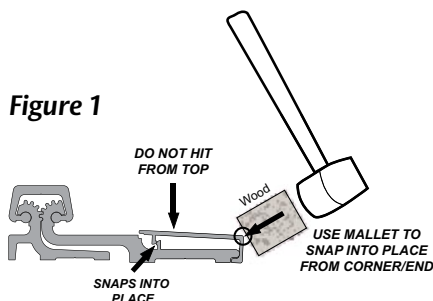
Tools Required:



Installation Instructions:

Full Surface units are designed mainly for retrofit work, and are applied to the exposed surface of the door and frame, with clearances as shown below in Figures A & B (below).

1. Open the PemkoHinge™ leaves and position the frame leaf portion on the face of the frame. Allow 1/8" clearance between top of PemkoHinge™ and frame header for proper door head clearance.
2. Mark and drill for #12-24 screws, per Drill Size Chart (below), and attach frame leaf to frame. (Use wax or soap on screws to aid installation.)
3. Position the door in the opening; shim to adjust for proper clearance (See Figures A and B).
4. Install the six (6) #12-24 x 3/4" self drill/tapping screws in the six (6) 7/32" holes located in the door leaf portion of the hinge.
5. Remove shims and open the door. Check for proper swing and clearances. Adjust if required.
6. Close the door. Mark the centers of the remaining holes. Drill holes all the way through the door using a 1/4" diameter drill.
7. Open the door. Enlarge the 1/4" holes on the inside face of the door using a 3/8" dia. drill. Finish attaching door leaf portion of PemkoHinge™ to the face of the door using the four (4) thru-bolts and shoulder bolts. Thru-bolts attach from inside face; shoulder bolts attach from the outside of face.
8. To complete the installation, secure the cover by hooking the edge away from hinge gears under the door leaf and then snap the other edge over using a rubber mallet on far side, working from top to bottom. Adjust so top of cover is flush with top of hinge (See Figure 1).



9. Firepins are required on 3 hour (A-Label) assemblies. (See reverse side for instructions).

**Trademark
HARDWARE**

148 Horton Drive, Suite B
Monsey, NY 10952

Phone: 845-388-1300
Fax: 845-367-4657

www.TMHardware.com
sales@tmhardware.com



**Trademark
HARDWARE**

Installation Guide

Shortening the Hinge:

If the hinge must be shortened, cut the bottom only using a chop saw. This will allow metal chips to work out after the installation. Although it is not handed, the hinge becomes handed after cutting and the cut edge must be installed at the bottom of the opening.

DRILL SIZE CHART:

MATERIAL	THICKNESS	DRILL SIZE
Aluminum	.090 - .140	13
Metal	20 gauge	17
Metal	16-18 gauge	15
Metal	12-14 gauge	13
Wood	N/A	5/32"

FIGURE A

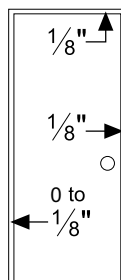
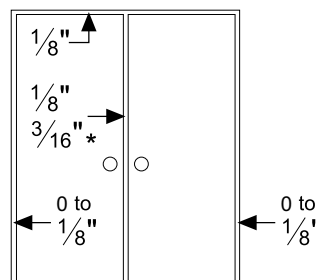


FIGURE B



* Allow extra clearance as required per astragal manufacturer. Certain door and frame conditions may require an extra 1/32"-1/16" clearance. Excessive clearance on fire rated assemblies may violate the requirements of NFPA 80.