

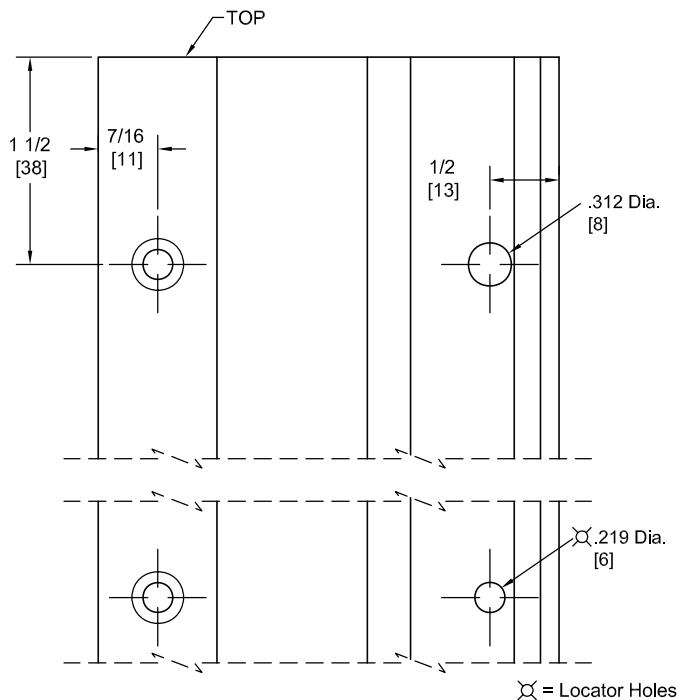
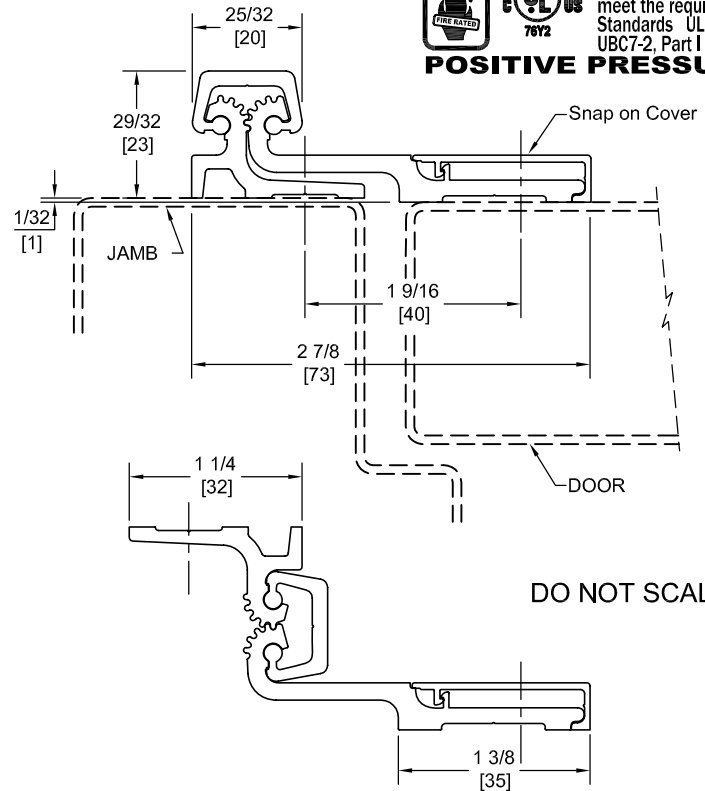
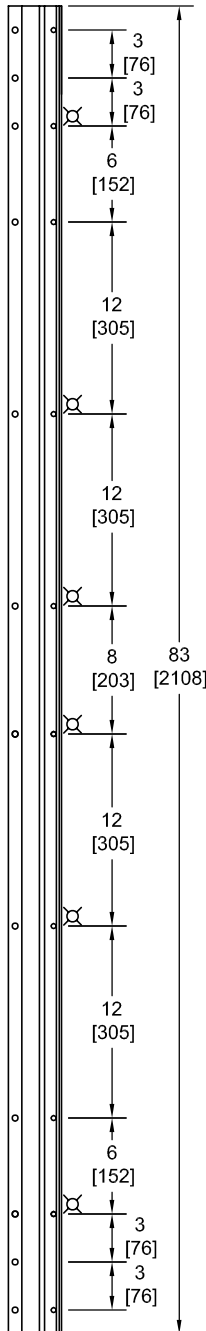
FS83HD

TEMPLATE FULL SURFACE CONTINUOUS GEARED ALUMINUM HINGE



Fire Rated
Classified & Listed to
meet the requirements of
Standards UL10B, UL10C,
UBC7-2, Part I & BS476

POSITIVE PRESSURE



**** CAUTION ****
Due To Frame
Installation
Variations,
Pre-drilling
For Fasteners
Is Not
Recommended

PEMCO Template Full Surface Continuous Geared Aluminum Hinges CFS83HD/DFS83HD are made to conform to this drawing.

PEMCO CFS83HD/DFS83HD hinges can be supplied with Electric Functions - See Electrical Application Section.

Machine Screw Size - Jamb Leaf - No. 12-24 x 7/16 FHUC Thread-forming.

- Door Leaf - No. 12-24 x 3/4 Pan Head Self-drilling.

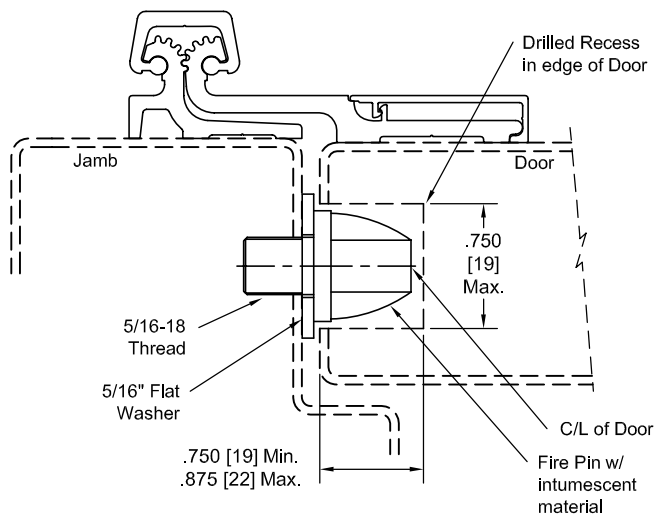
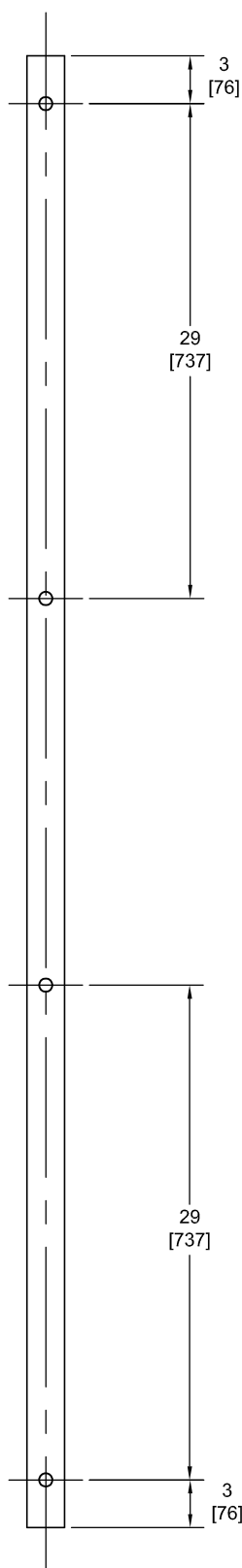
- No. 10 x 1 -1/2 Truss Head SMS.

- No. 1/4-20 x 1 PCH Shoulder Screws w/ No. 1/4-20 x 1 5/8 Thru Bolts.

PEMCO Continuous Geared Aluminum Hinges are Listed for fire applications up to 90 minutes without special preparation; for 3 hour openings using hollow metal doors and hollow metal frames on Masonry/Drywall, Fire Pins (supplied separately) must be used. See back for locations.

Manufacturer reserves the right to make changes without formal notice.

Fire Pin Application



Concealed Circuit (CC) Application

SEE ELECTRICAL APPLICATION SECTION
IN TECHNICAL MANUAL

Magnetic Monitor (MM) Application

SEE ELECTRICAL APPLICATION SECTION
IN TECHNICAL MANUAL

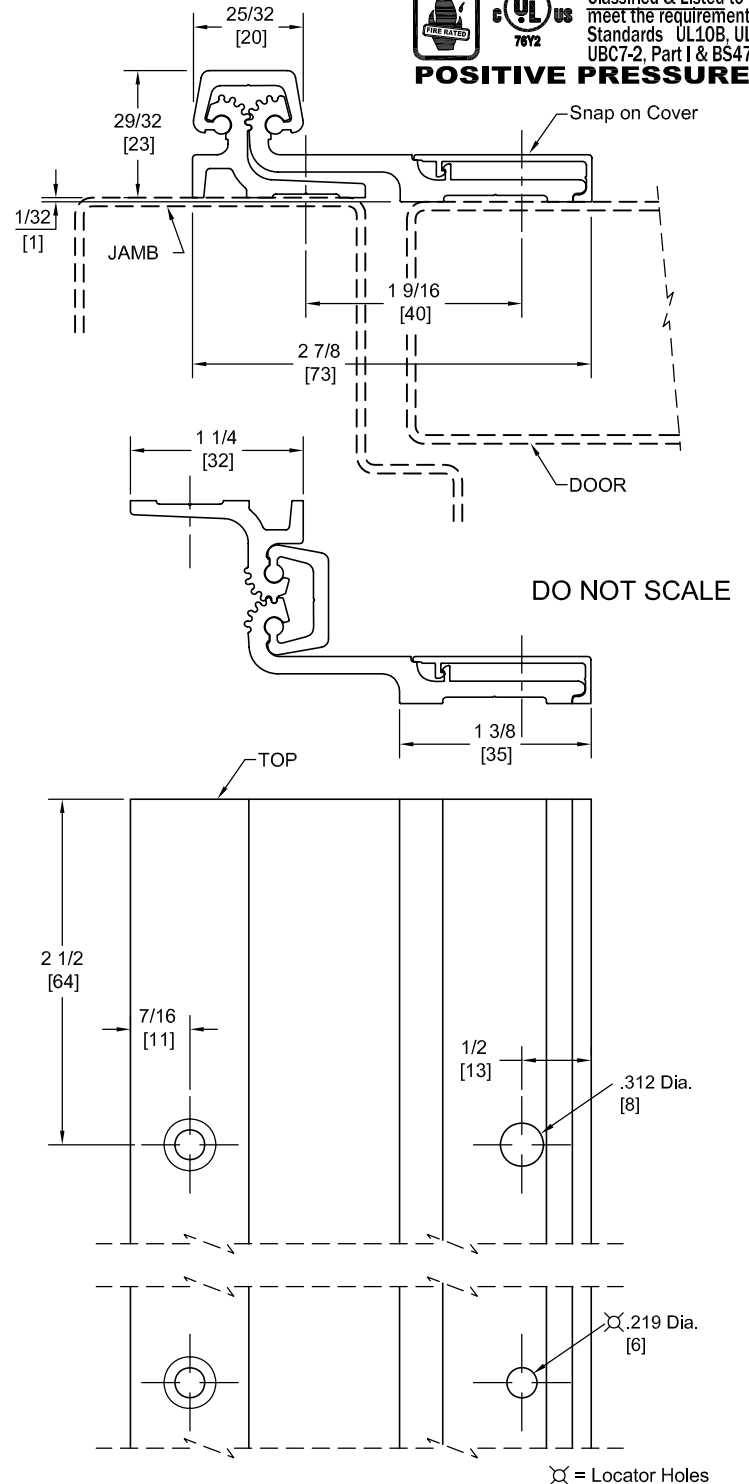
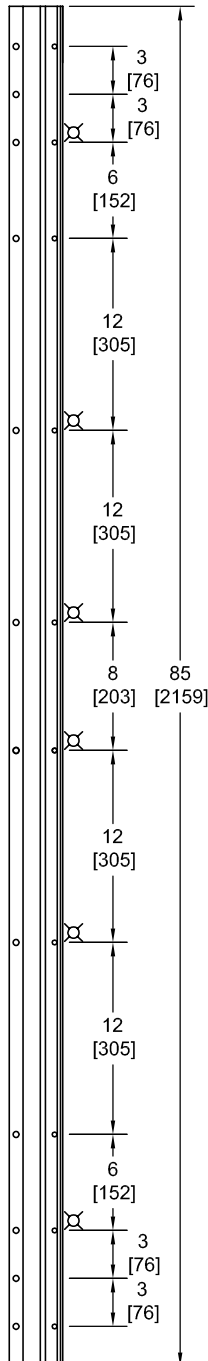
FS85HD

TEMPLATE FULL SURFACE CONTINUOUS GEARED ALUMINUM HINGE



Fire Rated
Classified & Listed to
meet the requirements of
Standards UL10B, UL10C,
UBC7-2, Part I & BS476

POSITIVE PRESSURE



**** CAUTION ****
Due To Frame
Installation
Variations,
Pre-drilling
For Fasteners
Is Not
Recommended

PEMKO Template Full Surface Continuous Geared Aluminum Hinges CFS85HD/DFS85HD are made to conform to this drawing.

PEMKO CFS85HD/DFS85HD hinges can be supplied with Electric Functions - See Electrical Application Section.

Machine Screw Size - Jamb Leaf - No. 12-24 x 7/16 FHUC Thread-forming.

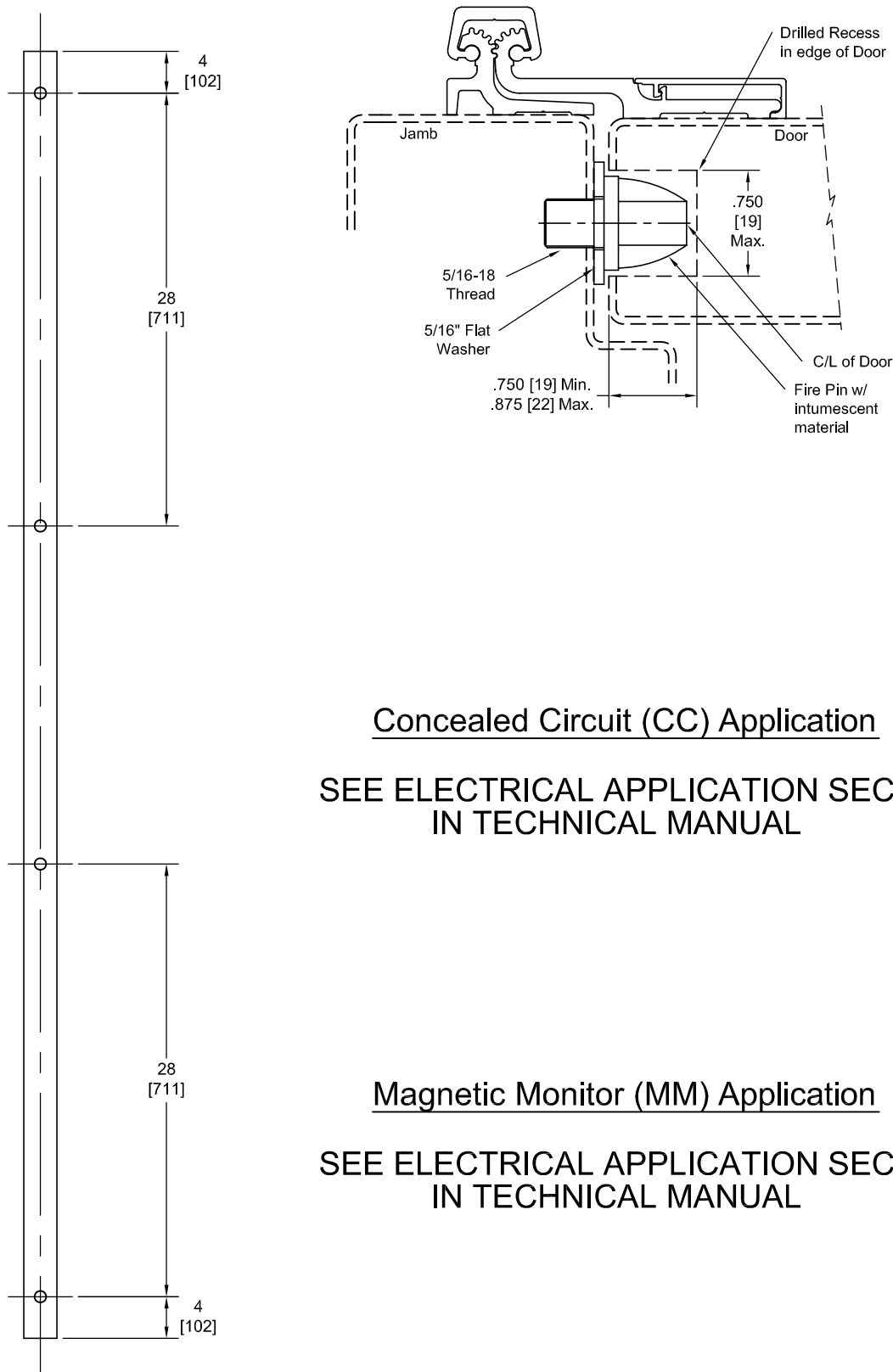
- Door Leaf - No. 12-24 x 3/4 Pan Head Self-drilling.

- No. 10 x 1 -1/2 Truss Head SMS.

- No. 1/4-20 x 1 PCH Shoulder Screws w/ No. 1/4-20 x 1 5/8 Thru Bolts.

PEMKO Continuous Geared Aluminum Hinges are Listed for fire applications up to 90 minutes without special preparation; for 3 hour openings using hollow metal doors and hollow metal frames on Masonry/Drywall, Fire Pins (supplied separately) must be used. See back for locations.

Fire Pin Application



Concealed Circuit (CC) Application

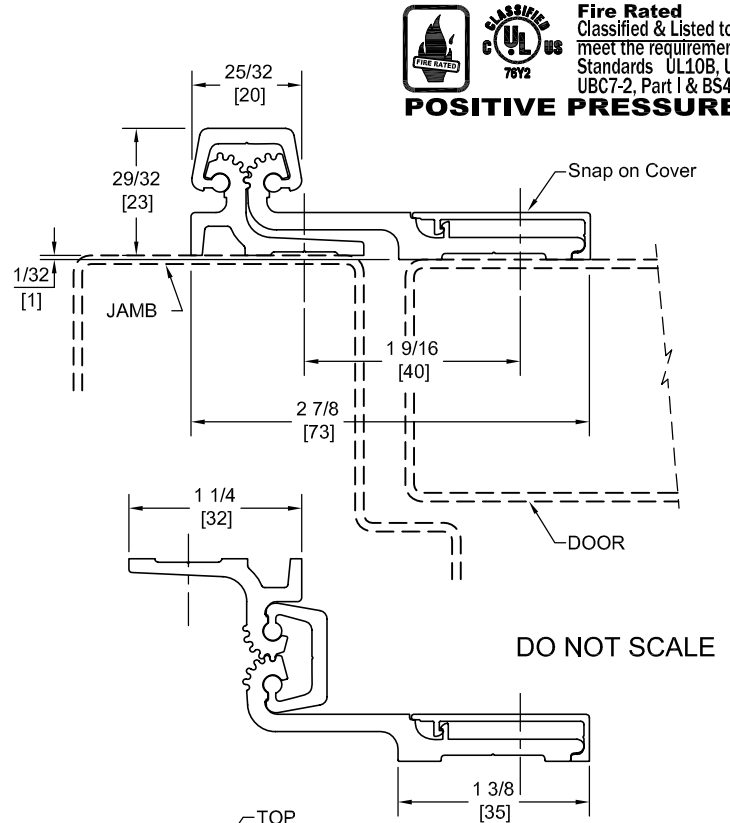
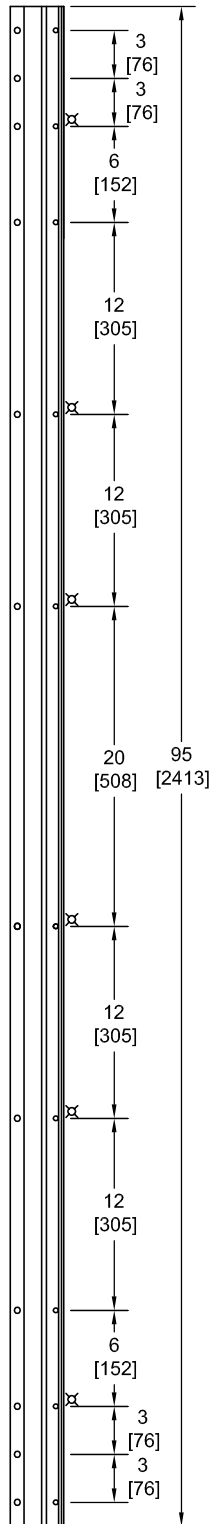
SEE ELECTRICAL APPLICATION SECTION
IN TECHNICAL MANUAL

Magnetic Monitor (MM) Application

SEE ELECTRICAL APPLICATION SECTION
IN TECHNICAL MANUAL

FS95HD

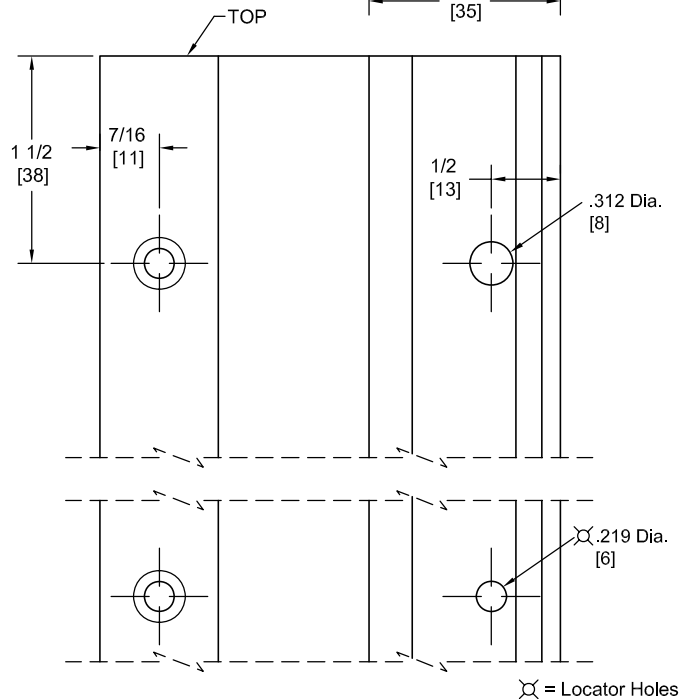
TEMPLATE FULL SURFACE CONTINUOUS GEARED ALUMINUM HINGE



Fire Rated
Classified & Listed to
meet the requirements of
Standards UL10B, UL10C,
UBC7-2, Part I & BS476

POSITIVE PRESSURE

**** CAUTION ****
Due To Frame
Installation
Variations,
Pre-drilling
For Fasteners
Is Not
Recommended



⊗ = Locator Holes

PEMCO Template Full Surface Continuous Geared Aluminum Hinges CFS95HD/DFS95HD are made to conform to this drawing.

PEMCO CFS95HD/DFS95HD hinges can be supplied with Electric Functions - See Electrical Application Section.

Machine Screw Size - Jamb Leaf - No. 12-24 x 7/16 FHUC Thread-forming.

- Door Leaf - No. 12-24 x 3/4 Pan Head Self-drilling.

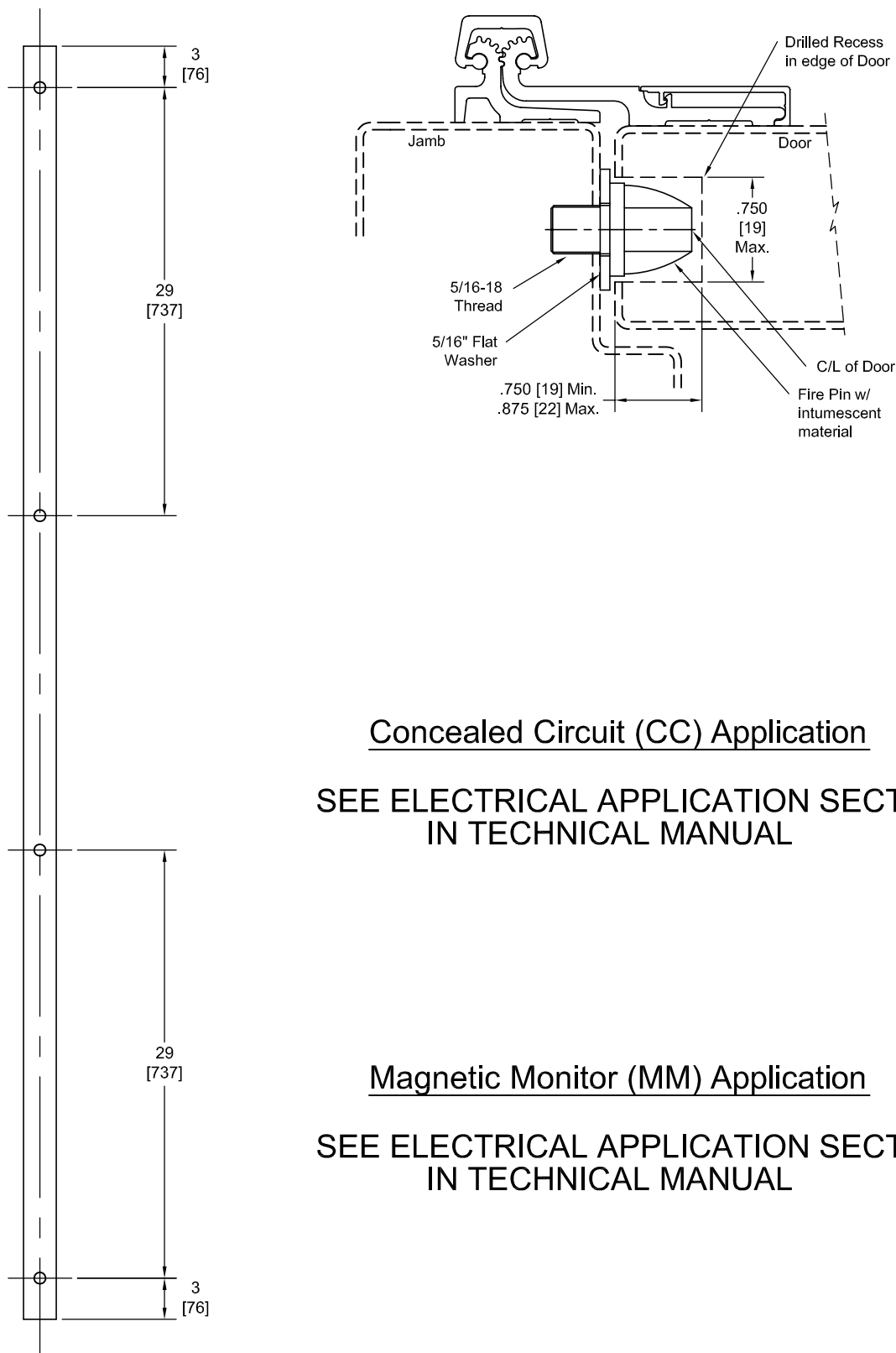
- No. 10 x 1 - 1/2 Truss Head SMS.

- No. 1/4-20 x 1 PCH Shoulder Screws w/ No. 1/4-20 x 1 5/8 Thru Bolts.

PEMCO Continuous Geared Aluminum Hinges are Listed for fire applications up to 90 minutes without special preparation; for 3 hour openings using hollow metal doors and hollow metal frames on Masonry/Drywall, Fire Pins (supplied separately) must be used. See back for locations.

Manufacturer reserves the right to make changes without formal notice.

Fire Pin Application



Concealed Circuit (CC) Application

SEE ELECTRICAL APPLICATION SECTION
IN TECHNICAL MANUAL

Magnetic Monitor (MM) Application

SEE ELECTRICAL APPLICATION SECTION
IN TECHNICAL MANUAL

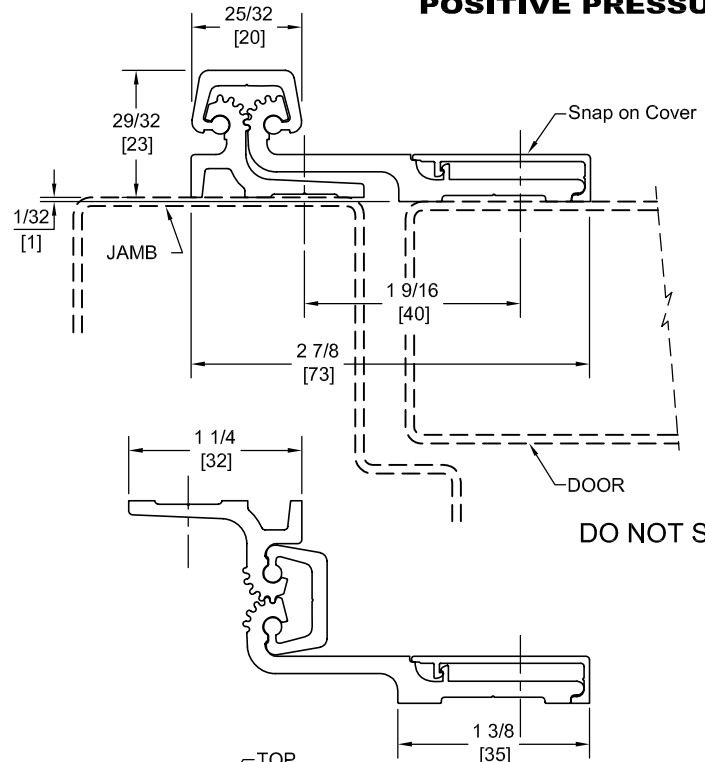
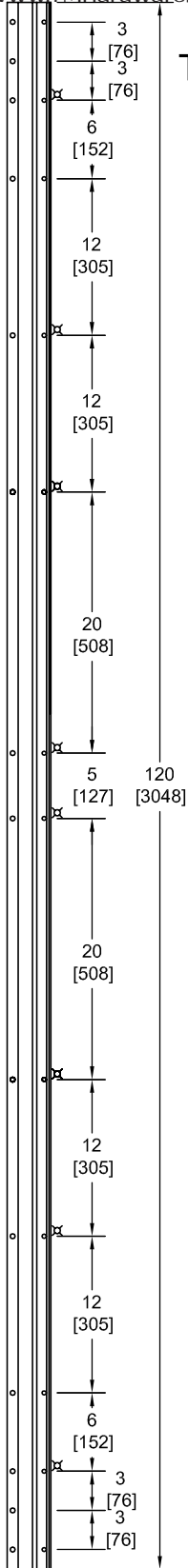
FS120HD

TEMPLATE FULL SURFACE CONTINUOUS GEARED ALUMINUM HINGE



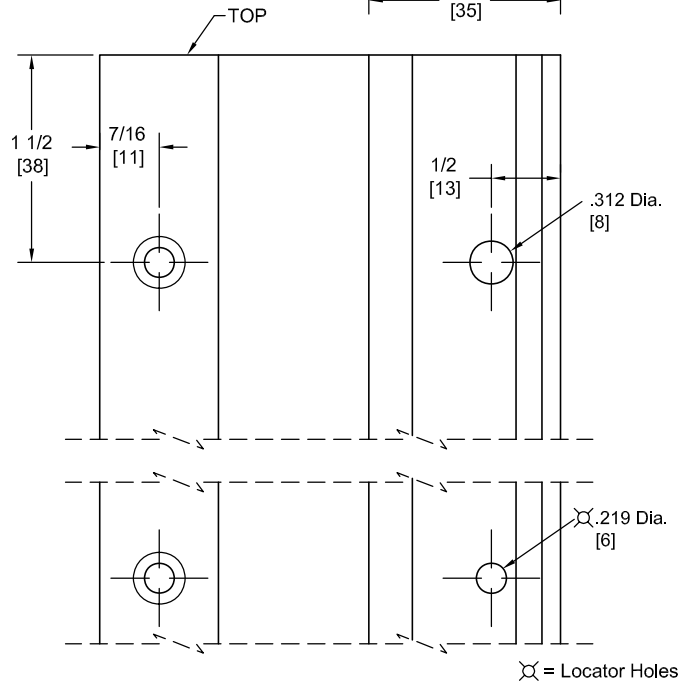
Fire Rated
Classified & Listed to
meet the requirements of
Standards UL10B, UL10C,
UBC7-2, Part I & BS476

POSITIVE PRESSURE



DO NOT SCALE

**** CAUTION ****
Due To Frame
Installation
Variations,
Pre-drilling
For Fasteners
Is Not
Recommended



PEMKO Template Full Surface Continuous Geared Aluminum Hinges CFS120HD/DFS120HD are made to conform to this drawing.

PEMKO CFS120HD/DFS120HD hinges can be supplied with Electric Functions - See Electrical Application Section.

Machine Screw Size - Jamb Leaf - No. 12-24 x 7/16 FHUC Thread-forming.

- Door Leaf - No. 12-24 x 3/4 Pan Head Self-drilling.

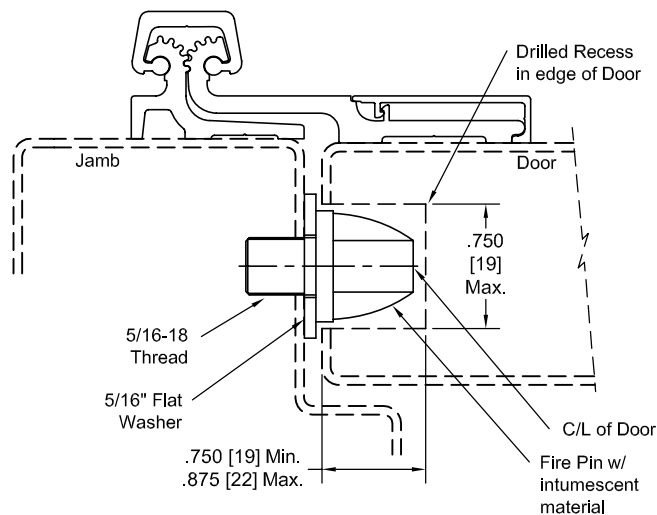
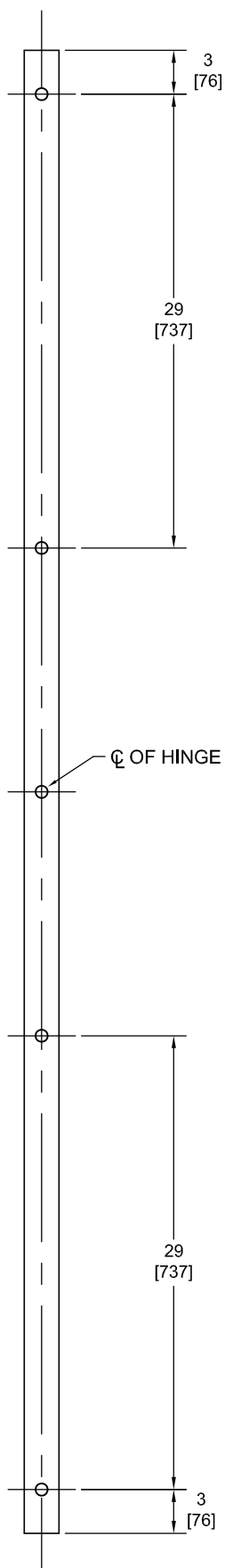
- No. 10 x 1-1/2 Truss Head SMS.

- No. 1/4-20 x 1 PCH Shoulder Screws w/ No. 1/4-20 x 1 5/8 Thru Bolts.

PEMKO Continuous Geared Aluminum Hinges are Listed for fire applications up to 90 minutes without special preparation; for 3 hour openings using hollow metal doors and hollow metal frames on Masonry/Drywall, Fire Pins (supplied separately) must be used. See back for locations.

Manufacturer reserves the right to make changes without formal notice.

Fire Pin Application



Concealed Circuit (CC) Application

SEE ELECTRICAL APPLICATION SECTION
IN TECHNICAL MANUAL

Magnetic Monitor (MM) Application

SEE ELECTRICAL APPLICATION SECTION
IN TECHNICAL MANUAL