

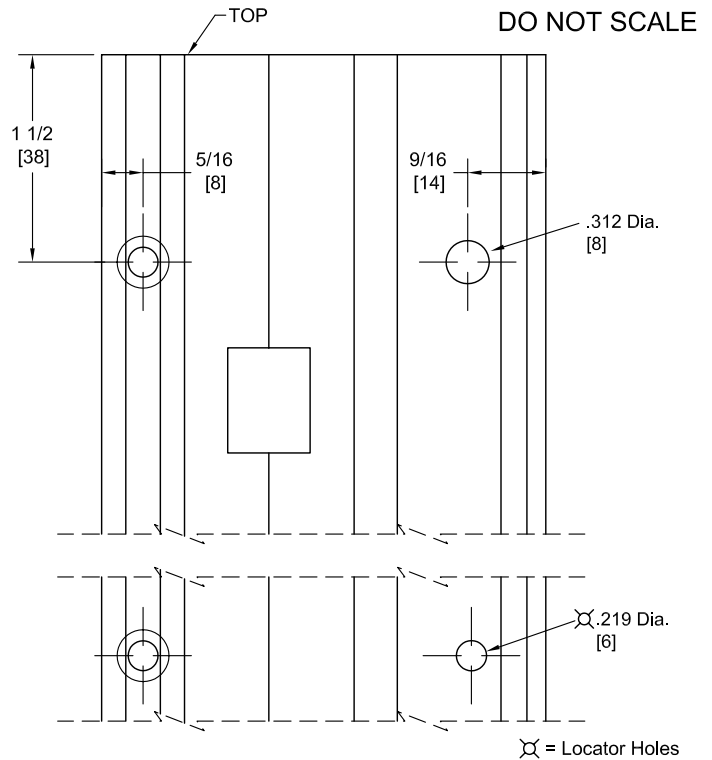
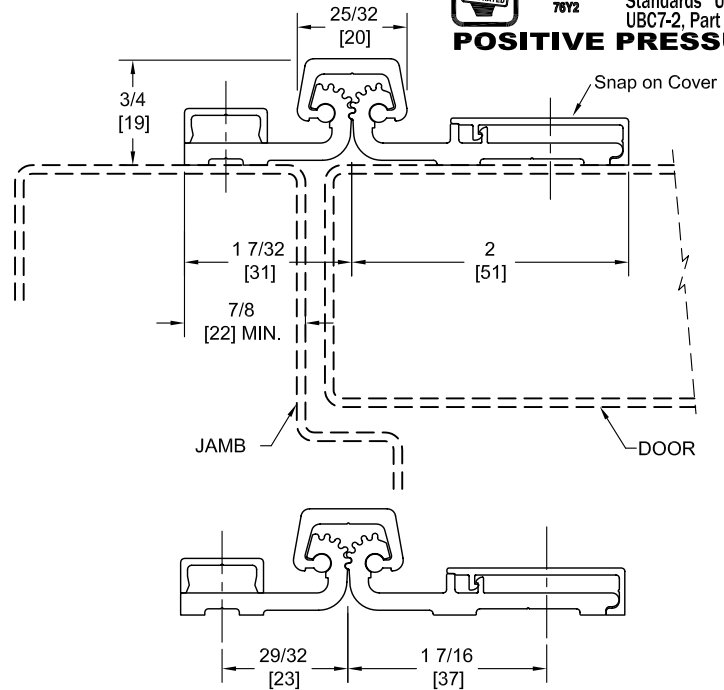
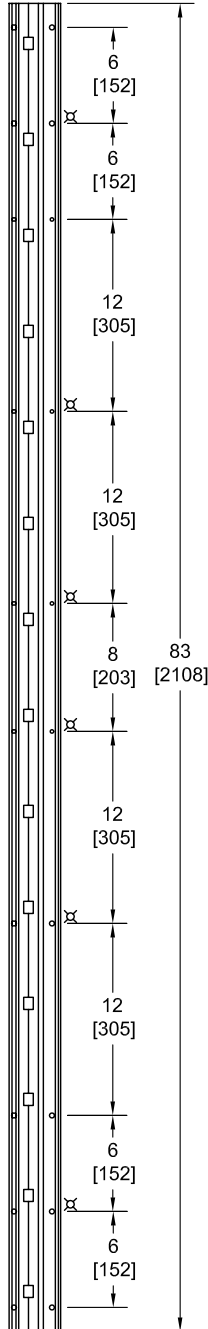
# FS83CP

## TEMPLATE FULL SURFACE CONTINUOUS GEARED ALUMINUM HINGE



**Fire Rated**  
Classified & Listed to  
meet the requirements of  
Standards UL10B, UL10C,  
UBC7-2, Part I & BS476

**POSITIVE PRESSURE**



**\*\* CAUTION \*\***  
Due To Frame  
Installation  
Variations,  
Pre-drilling  
For Fasteners  
Is Not  
Recommended

PEMKO Template Full Surface Continuous Geared Aluminum Hinges CFS83CP/DFS83CP are made to conform to this drawing.

Machine Screw Size - Jamb Leaf - No. 1/4-20 x 5/8 Self-tapping Security Torx (Tip No. T-27).

- Jamb Leaf Snap Cover - No. 12-24 x 3/4 FHUC Self-drilling w/ Special Washer.

- Door Leaf - No. 12-24 x 3/4 Pan Head Self-drilling.

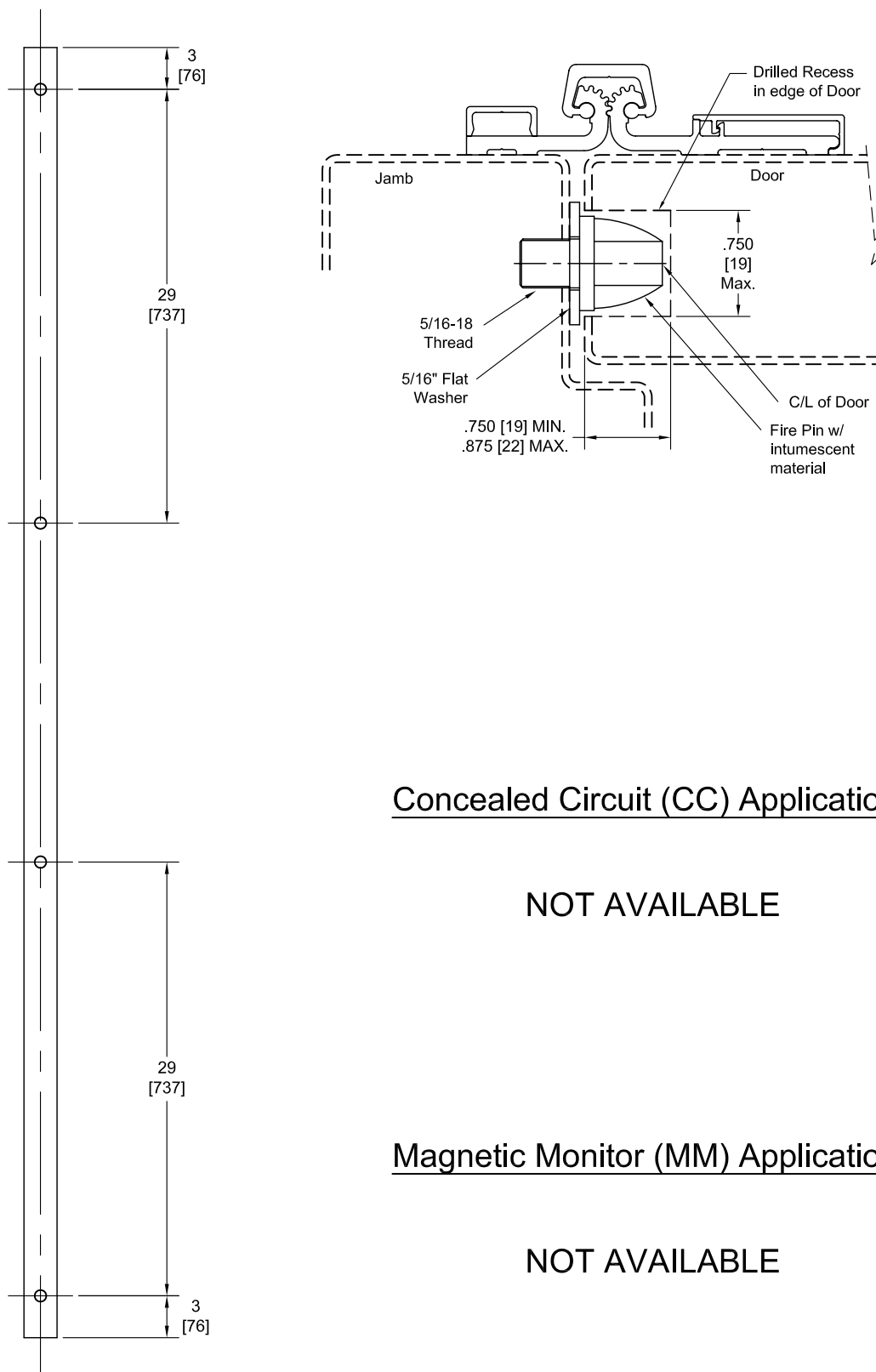
- No. 10 x 1 - 1/2 Truss Head SMS.

- No. 1/4-20 x 1 PCH Shoulder Screws w/ No. 1/4-20 x 1 5/8 Thru Bolts.

PEMKO Continuous Geared Aluminum Hinges are Listed for fire applications up to 90 minutes without special preparation; for 3 hour openings using hollow metal doors and hollow metal frames on Masonry/Drywall, Fire Pins (supplied separately) must be used. See back for locations.

Manufacturer reserves the right to make changes without formal notice.

## Fire Pin Application



## Concealed Circuit (CC) Application

NOT AVAILABLE

## Magnetic Monitor (MM) Application

NOT AVAILABLE

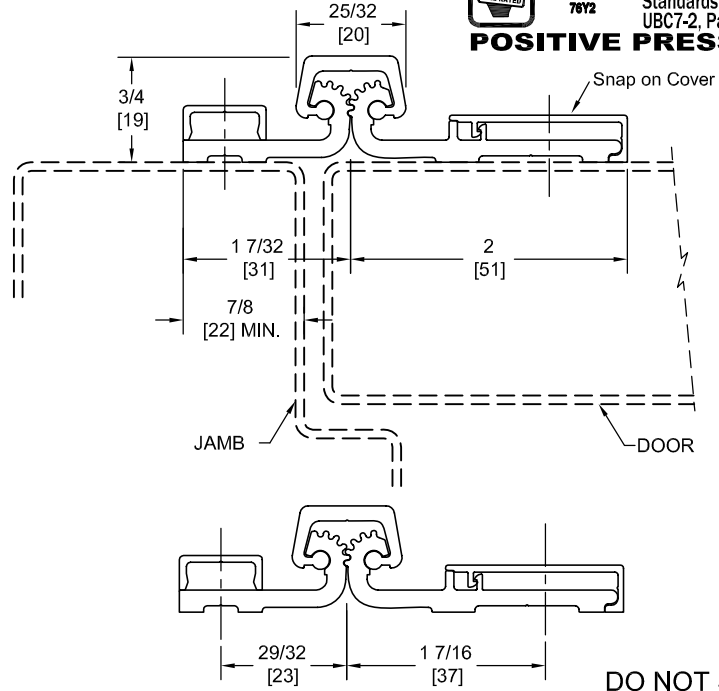
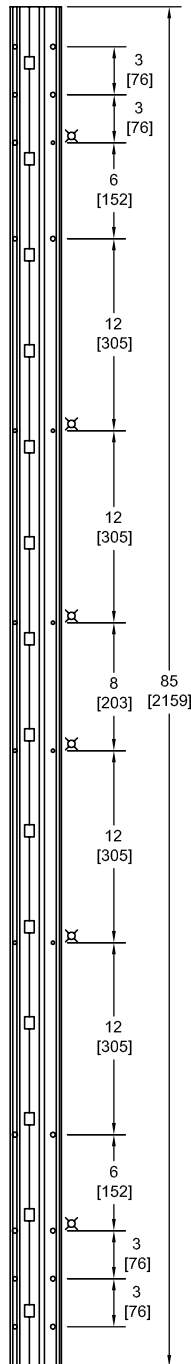
# FS85CP

## TEMPLATE FULL SURFACE CONTINUOUS GEARED ALUMINUM HINGE



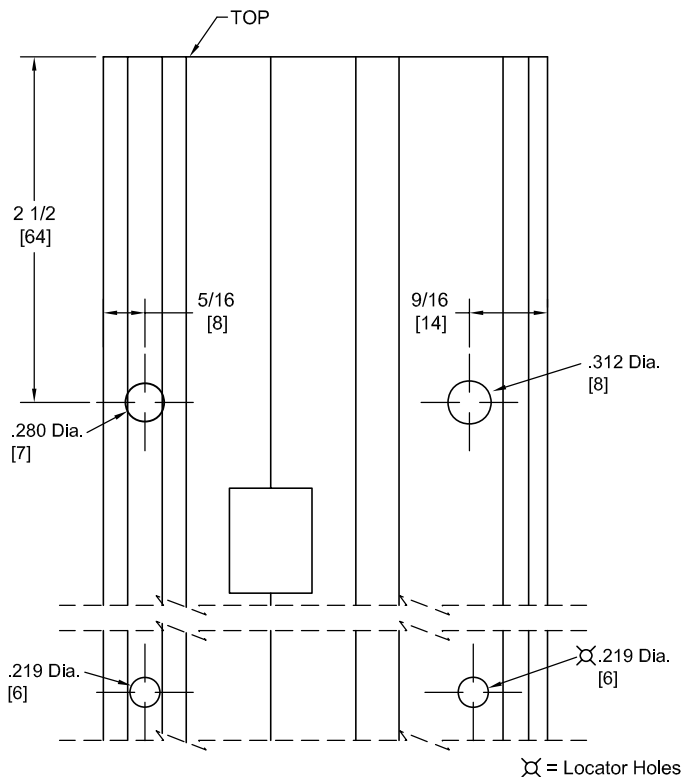
**Fire Rated**  
Classified & Listed to  
meet the requirements of  
Standards UL10B, UL10C,  
UBC7-2, Part I & BS476

**POSITIVE PRESSURE**



DO NOT SCALE

**\*\* CAUTION \*\***  
Due To Frame  
Installation  
Variations,  
Pre-drilling  
For Fasteners  
Is Not  
Recommended



PEMCO Template Full Surface Continuous Geared Aluminum Hinges CFS85CP/DFS85CP are made to conform to this drawing.

Machine Screw Size - Jamb Leaf - No. 1/4-20 x 5/8 Self-tapping Security Torx (Tip No. T-27).

- Jamb Leaf Snap Cover - No. 12-24 x 3/4 FHUC Self-drilling w/ Special Washer.

- Door Leaf - No. 12-24 x 3/4 Pan Head Self-drilling.

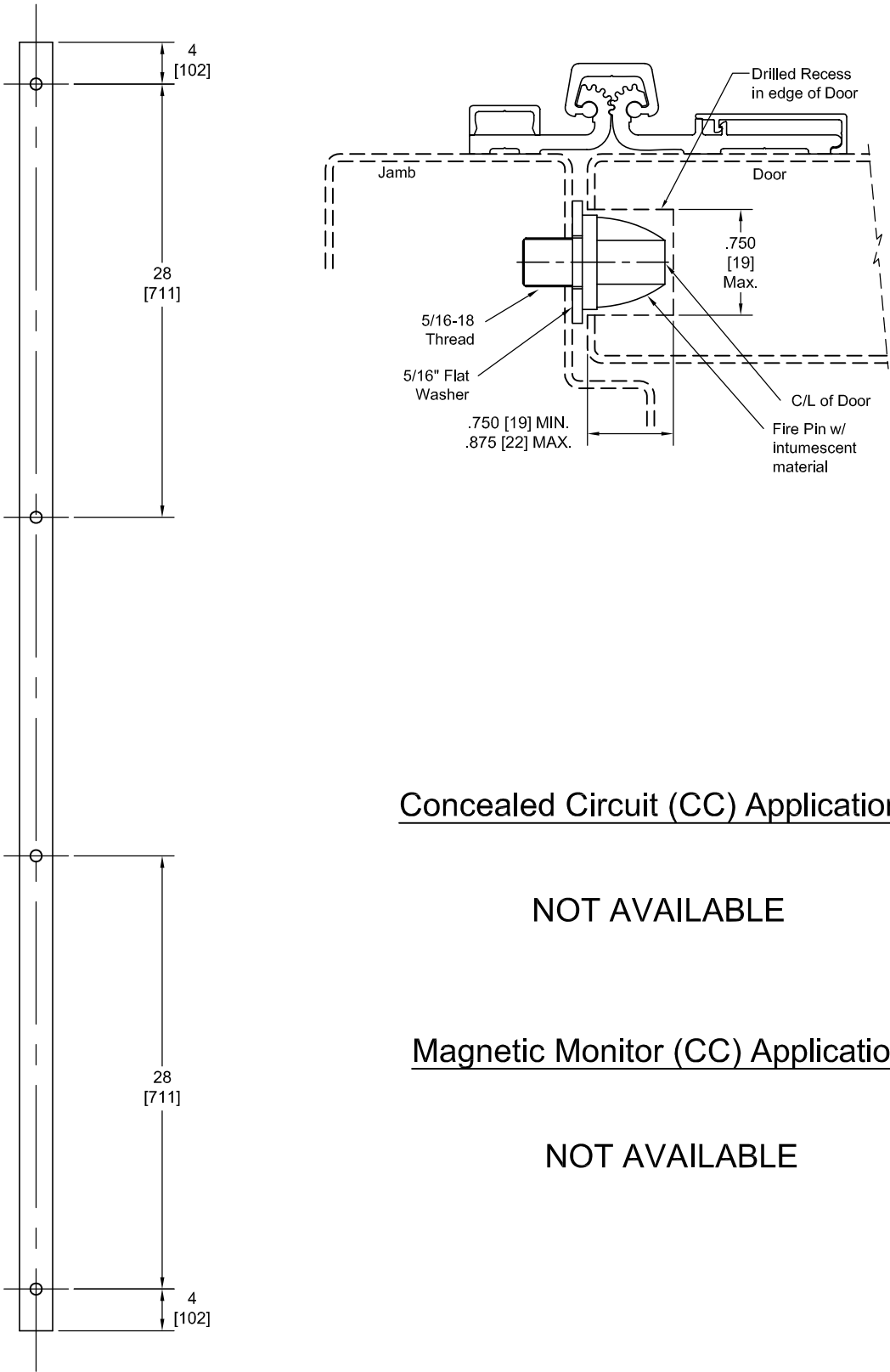
- No. 10 x 1 -1/2 Truss Head SMS.

- No. 1/4-20 x 1 PCH Shoulder Screws w/ No. 1/4-20 x 1 5/8 Thru Bolts.

PEMCO Continuous Geared Aluminum Hinges are Listed for fire applications up to 90 minutes without special preparation; for 3 hour openings using hollow metal doors and hollow metal frames on Masonry/Drywall, Fire Pins (supplied separately) must be used. See back for locations.

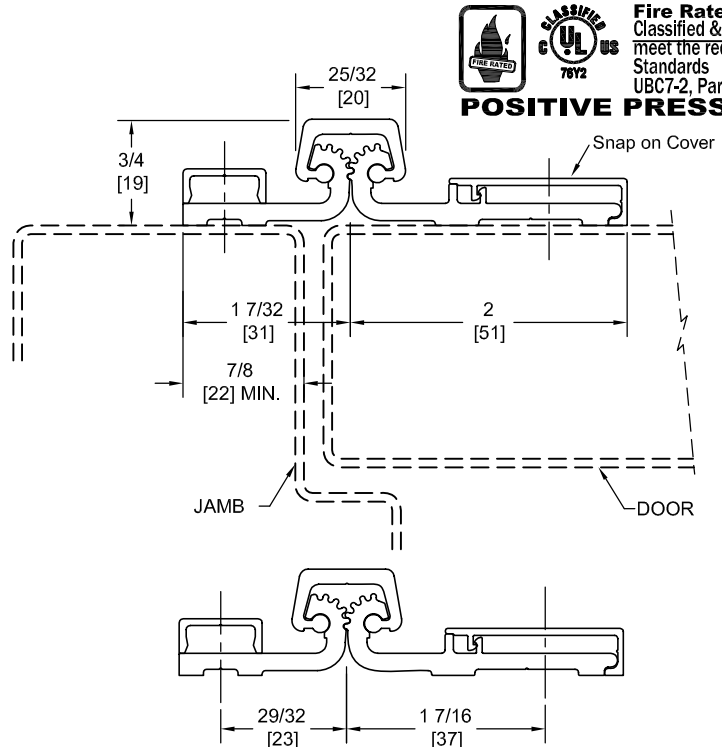
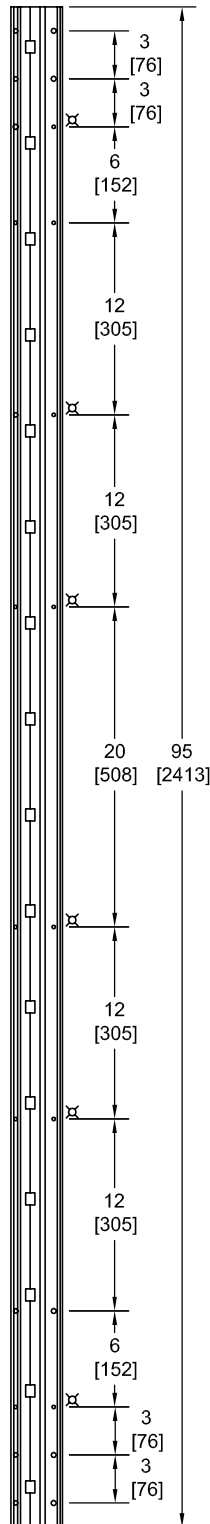
Manufacturer reserves the right to make changes without formal notice.

Fire Pin Application



# FS95CP

## TEMPLATE FULL SURFACE CONTINUOUS GEARED ALUMINUM HINGE



**Fire Rated**  
Classified & Listed to  
meet the requirements of  
Standards UL10B, UL10C,  
UBC7-2, Part I & BS476

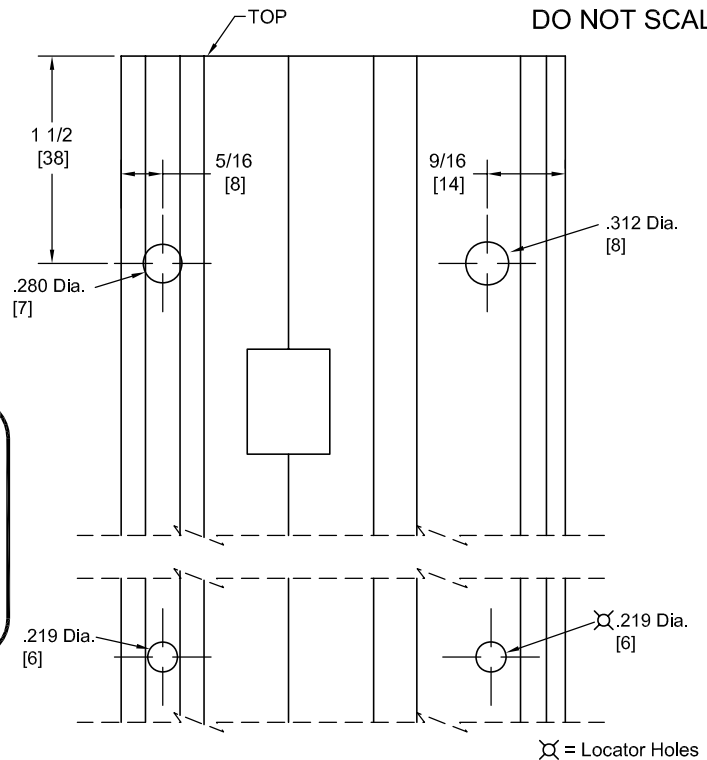
**POSITIVE PRESSURE**

Snap on Cover

JAMB

DOOR

DO NOT SCALE



**\*\* CAUTION \*\***  
Due To Frame  
Installation  
Variations,  
Pre-drilling  
For Fasteners  
Is Not  
Recommended

⊗ = Locator Holes

PEMKO Template Full Surface Continuous Geared Aluminum Hinges CFS95CP/DFS95CP are made to conform to this drawing.

Machine Screw Size - Jamb Leaf - No. 1/4-20 x 5/8 Self-tapping Security Torx (Tip No. T-27).

- Jamb Leaf Snap Cover - No. 12-24 x 3/4 FHUC Self-drilling w/ Special Washer.

- Door Leaf - No. 12-24 x 3/4 Pan Head Self-drilling.

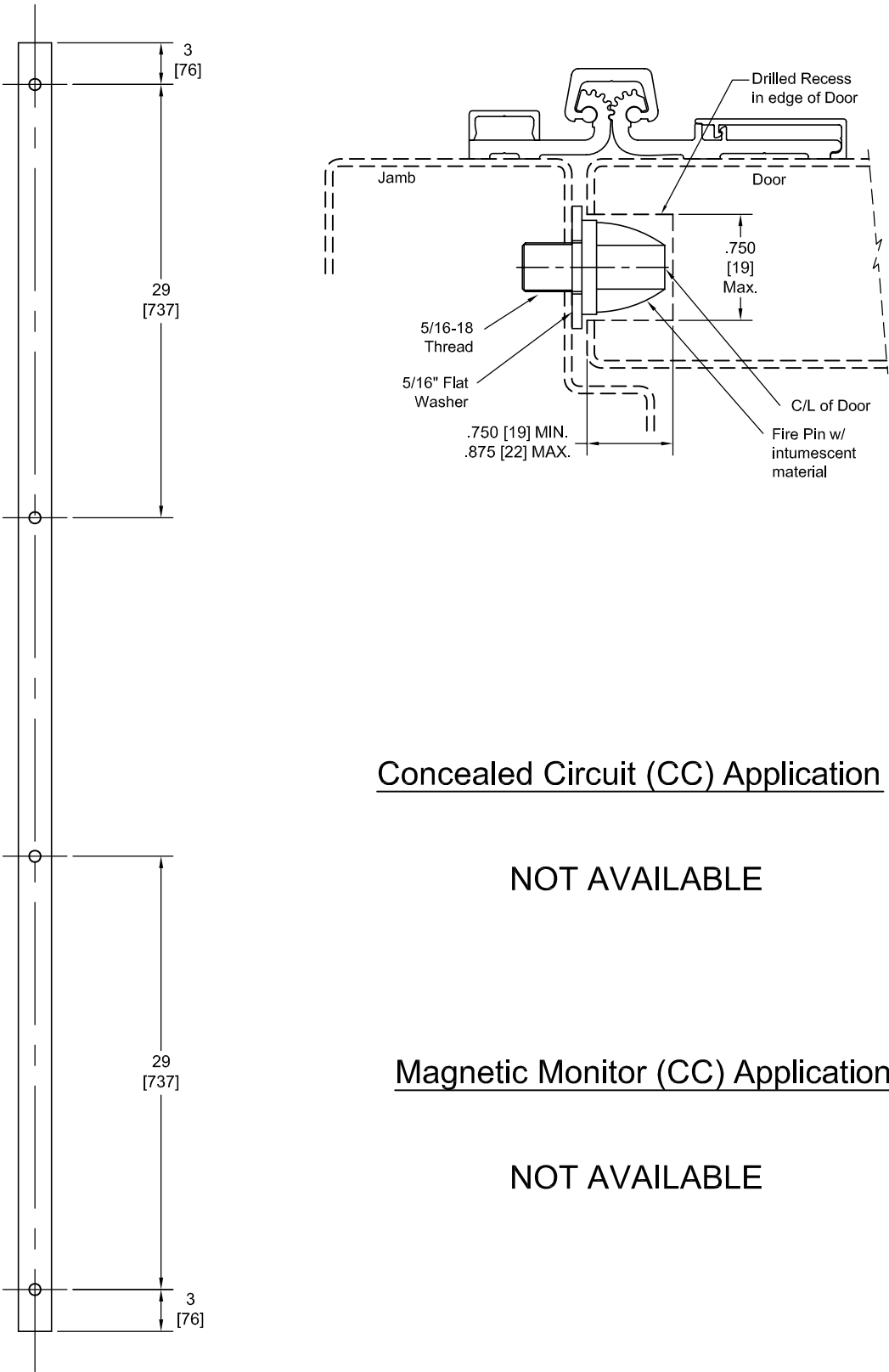
- No. 10 x 1 -1/2 Truss Head SMS.

- No. 1/4-20 x 1 PCH Shoulder Screws w/ No. 1/4-20 x 1 5/8 Thru Bolts.

PEMKO Continuous Geared Aluminum Hinges are Listed for fire applications up to 90 minutes without special preparation; for 3 hour openings using hollow metal doors and hollow metal frames on Masonry/Drywall, Fire Pins (supplied separately) must be used. See back for locations.

Manufacturer reserves the right to make changes without formal notice.

Fire Pin Application



Concealed Circuit (CC) Application

NOT AVAILABLE

Magnetic Monitor (CC) Application

NOT AVAILABLE

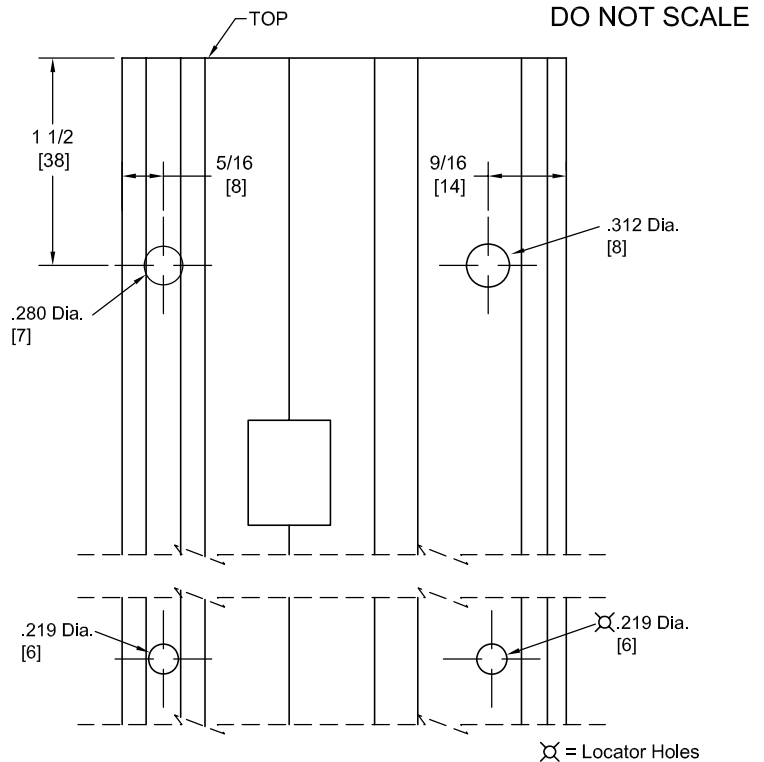
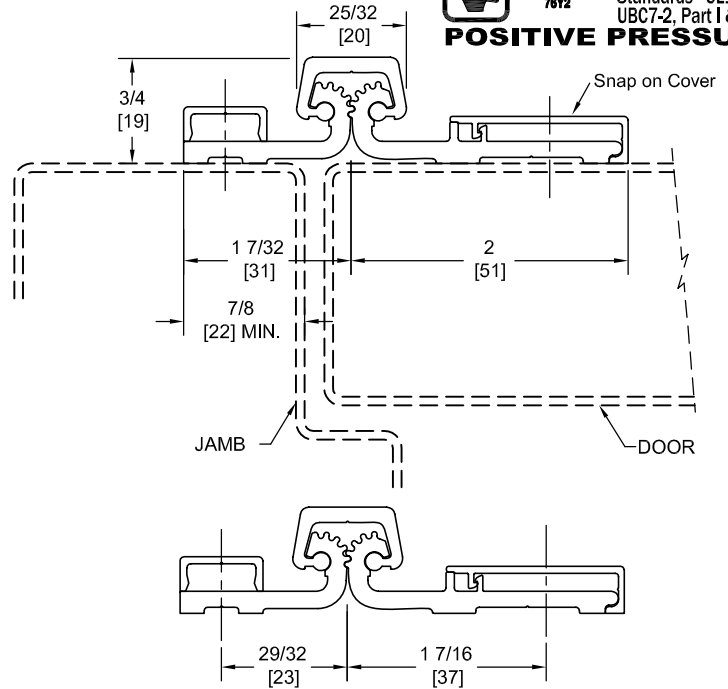
# FS120CP

## TEMPLATE FULL SURFACE CONTINUOUS GEARED ALUMINUM HINGE



**Fire Rated**  
Classified & Listed to  
meet the requirements of  
Standards UL10B, UL10C,  
UBC7-2, Part I & BS476

**POSITIVE PRESSURE**



**\*\* CAUTION \*\***  
Due To Frame  
Installation  
Variations,  
Pre-drilling  
For Fasteners  
Is Not  
Recommended

PEMKO Template Full Surface Continuous Geared Aluminum Hinges CFS120CP/DFS120CP are made to conform to this drawing.

Machine Screw Size - Jamb Leaf - No. 1/4-20 x 5/8 Self-tapping Security Torx (Tip No. T-27).

- Jamb Leaf Snap Cover - No. 12-24 x 3/4 FHUC Self-drilling w/ Special Washer.

- Door Leaf - No. 12-24 x 3/4 Pan Head Self-drilling.

- No. 10 x 1 -1/2 Truss Head SMS.

- No. 1/4-20 x 1 PCH Shoulder Screws w/ No. 1/4-20 x 1 5/8 Thru Bolts.

PEMKO Continuous Geared Aluminum Hinges are Listed for fire applications up to 90 minutes without special preparation; for 3 hour openings using hollow metal doors and hollow metal frames on Masonry/Drywall, Fire Pins (supplied separately) must be used. See back for locations.

Manufacturer reserves the right to make changes without formal notice.

Fire Pin Application

