

K Series

Grade 1 cylindrical lever locks

High traffic, high abuse door openings demand a Grade 1 quality lock to keep doors secure. When quality and reliability are needed but cost is a concern, the certified ANSI/BHMA Grade 1 Falcon K Series can do the job. The Falcon K Series gets back to basics by offering the most common functions, lever styles and finishes at an affordable price. The K Series features conventional cylinders and small format interchangeable cores that are compatible with SFIC products from other manufacturers. Our conventional cylinders are available in all Falcon conventional key sections, as well as Schlage C keyway, which is now masterkeyed across the complete Falcon product line.

Features

Lever security caps to help prevent undesired lever removal and lever sag after continual use

Four screws through-bolted for added strength, providing high security and peace of mind

UL listed latch standard

Non-handed levers for easy field installation

Clutching lever design allows the lever to move when locked without unlatching the door, preventing damage to the chassis

Conventional cylinders or interchangeable core keying compatible with SFIC products from Falcon or other manufacturers.

# K Series

## Features

**ANSI/BHMA:** Meets ANSI/BHMA A156.2, Series 4000, Grade 1.

**UL:** 3 hour A label.

**Door thickness:** Adjustable 1 <sup>3</sup>/<sub>8</sub>" to 2 <sup>1</sup>/<sub>4</sub>". Comes set for a 1 <sup>3</sup>/<sub>4</sub>" thick door standard.

**Backset:** 2 <sup>3</sup>/<sub>4</sub>" standard. 2 <sup>3</sup>/<sub>8</sub>" optional.

**Mechanism:** Parts constructed of brass or cold formed steel, zinc plated and dichromated for rust resistance. Springs are stainless steel.

**Attachment:** Lock chassis secured to door by threaded mounting screws. Completely preassembled outer trim and inner spindle assembly are through-bolted both through and over chassis using four (4) screws to provide strength and resistance to loosening. Adding rose and lever to inner spindle assembly completes installation.

**Handing:** Locks are non-handed.

**Cylinders:** Drilled with 6-pin chambers, pinned in 5. Pinning in 6 chambers available when specified, at no cost. Cylinder assemblies removable to rekey. Also available with 6 or 7-pin small format interchangeable core (SFIC) cylinders. Cylinder housings and plugs machined from solid brass. Springs are stainless steel. Two nickel silver keys furnished standard.

**Keyways:** "G" keyway standard on conventional cylinders. "A" keyway standard on I/C core cylinders. Also available with some optional keyways.

**Trim:** Roses are heavy wrought brass or bronze, installed over pressure cast rose inserts which are through-bolted through door. Levers are pressure cast (solid levers—no inserts) material finished to match mating parts.

**Latches:** 2 <sup>1</sup>/<sub>4</sub>" x 1 <sup>1</sup>/<sub>8</sub>" square corner with 2 <sup>3</sup>/<sub>4</sub>" backset comes standard; 2 <sup>3</sup>/<sub>8</sub>" backset option available if specified. Radius corners for both 2 <sup>3</sup>/<sub>8</sub>" and 2 <sup>3</sup>/<sub>4</sub>" backsets available if specified. All latches are UL listed and conform to both beveled and non-beveled doors.

**Strikes:** 4 <sup>7</sup>/<sub>8</sub>" x 1 <sup>1</sup>/<sub>4</sub>" ANSI strike with curved lip to meet ANSI A115.2 door frame preparation standard.

**Screws:** Furnished with combination screws for use in wood or metal doors and frames.

## Specifications

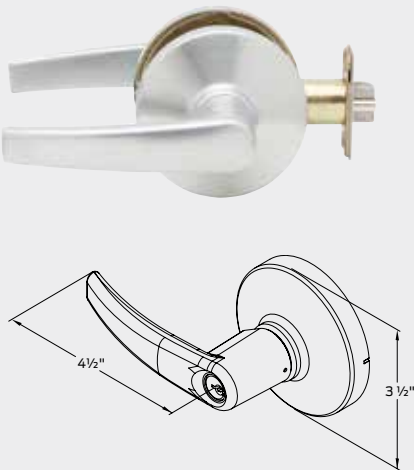
Key-in-lever cylindrical locksets shall be Falcon lock K Series or equal and meet the following requirements:

- All locks shall meet the new ANSI/BHMA A156.2, Series 4000, Grade 1 for key-in-lever locksets.
- Locksets shall be UL Listed (3 hour A Label).
- Locksets shall be provided standard with a clutching lever design. When outside lever is locked, it is not rigid but will move freely without operating the latch bolt.
- Lever trim shall have individual torsion springs behind rose for lever return and to prevent lever sag. Trim shall be through bolted with four (4) screws to provide strength and resistance to loosening. Inner and outer trim shall "bottom out" to prevent door collapse. Roses shall be minimum of 3 <sup>1</sup>/<sub>2</sub>" diameter.
- All lever designs shall be solid and meet the federal ADA and state disability requirements. Inside levers shall be attached by allen-head set and lever catch to prevent tampering or vandalism.
- Locksets shall adjust to fit door thickness from 1 <sup>3</sup>/<sub>8</sub>" to 2 <sup>1</sup>/<sub>4</sub>".
- All locksets shall be non-handed and not require field disassembly for re-handing.
- Preparation for door must be non-handed.
- Cylinders to be secured by a dual retainer.

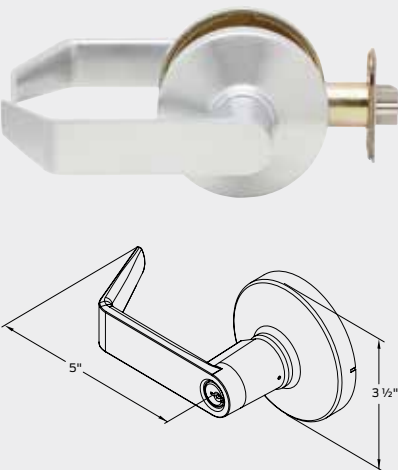
Acceptable manufacturer: Falcon Lock

# Lever styles

Avalon



Dane



Quantum






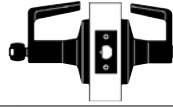



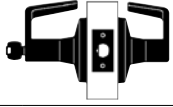

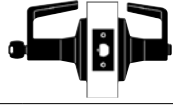

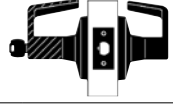


Trim finishes chart

Description	ANSI No.	Available on
Oil rubbed bronze	613	All trim
Satin chrome	626	All trim

## Functions

The Falcon K Series offers the industry's most common cylindrical lock functions to cover all of your basic door requirements. Consult page 61 for ordering information and assistance.

 Indicates interchangeable core available.

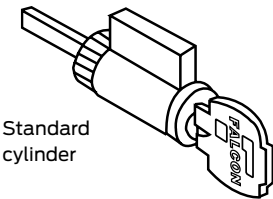
Catalog number	Function	Name	Description	ANSI no.
K101		Passage/closet latchset	Latch bolt by levers at all times.	F75
K301		Privacy lock	Latch bolt by levers. Outside lever locked by push button in inside lever. Rotating inside lever or closing door releases push button. Emergency release in outside lever unlocks door.	F76
K501		Entry lock 	Push button locking. Button on inside locks outside lever until unlocked by key or by rotating inside lever. Inside lever always free. Deadlocking latch bolt.	F82
K511		Entry/office lock 	Turn/push button locking. Pushing and turning button locks outside lever requiring use of key until button is manually unlocked. Push button locking. Pushing button locks outside lever until unlocked by key or by rotating inside lever. Inside lever always free. Deadlocking latch bolt.	F109
K561		Classroom lock 	Deadlocking latch bolt by levers. Outside lever is locked by key in outside lever. Inside lever is always free.	F84
K571		Corridor lock 	Deadlocking latch bolt by levers except when locked by push button in inside lever. Key in outside lever locks or unlocks outside lever and releases button. Closing door releases push button. Inside lever always free.	F90
K581		Storeroom lock 	Deadlocking latch bolt by lever inside or key outside. Outside lever is inoperable. Inside lever always free.	F86
K12		Dummy trim	Single trim-surface mounted rigid lever.	

# Cylinders and competitor keyways

## Standard cylinders - 6-pin

Catalog number	Description
Q330-396	Falcon cylinder, G keyway, 6 pin
Q330-397	Falcon cylinder, G keyway, 6 pin to 5 pin
Q630-310	Falcon cylinder, G keyway, 6 pin, K571
Q630-311	Falcon cylinder, G keyway, 6 pin to 5 pin, K571
Q330-391	Schlage cylinder, C keyway, 6 pin
Q630-306	Schlage cylinder, C keyway, 6 pin, K571

Note: Specify finish: 606 or 626

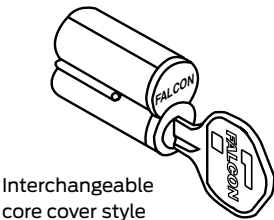


Standard cylinder

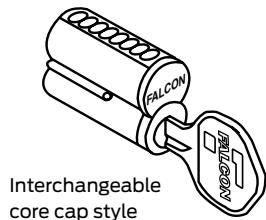
## Small format interchangeable core

Catalog number	Description
C606 (6-pin), C607 (7-pin)	For use in all I/C keyed locks (cover style)
CB806 (6-pin), CB807 (7-pin)	For use in all I/C keyed locks (cap style)

Note: Specify finish: 606 or 626  
Specify keyway: A (standard) or other keyway



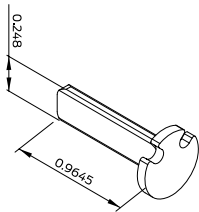
Interchangeable core cover style



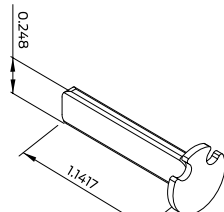
Interchangeable core cap style

## Tailpieces

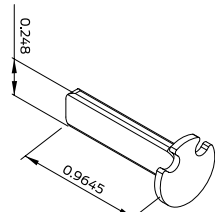
Catalog number	Description
Q630-289	SFIC tailpiece (K501, K511, K561, & K581)
Q330-392	SFIC tailpiece (K571)
Q330-393	Tailpiece, Falcon G-K501, K511, K561, K581
Q330-394	Tailpiece, Falcon G-K571
Q630-312	Tailpiece, Schlage C-K501, K511, K561, K581
Q630-288	Tailpiece, Schlage C-K571



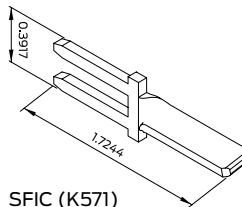
C keyway (K571)



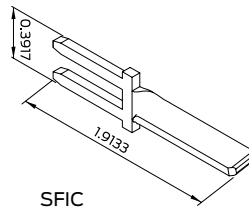
G keyway



G keyway (K571)



SFIC (K571)



SFIC

## Standard cylinders with competitor keyways - 6-pin

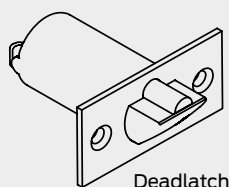
Catalog number	Description
Q330-152	Schlage C
Q330-166	Corbin 60 (0 bit or KD only)
Q330-210	Russwin D1 (0 bit or KD only)
Q330-158	Cor/Russ L4 (0 bit or KD only)
Q330-160	Sargent LA (0 bit or KD only)
Q330-156	Yale 8 (0 bit or KD only)

Note: Construction keying available. Reference page 101 for more information.

## Options and accessories

# Latches, strikes and other accessories

## Latches

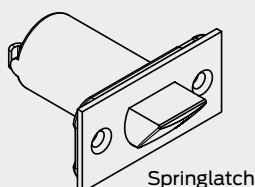


Deadlatch

## Deadlatches

Catalog number	Description	Faceplate size	Corner	Projection
<b>Q630-385</b>	<b>2 3/4" Backset with deadlatching</b>	<b>2 1/4" X 1 1/8"</b>	<b>Square</b>	<b>1/2"</b>
Q630-387	2 3/4" Backset with deadlatching	2 1/4" X 1 1/8"	Radius	1/2"
Q630-386	2 3/8" Backset with deadlatching	2 1/4" X 1 1/8"	Square	1/2"
Q630-388	2 3/8" Backset with deadlatching	2 1/4" X 1 1/8"	Radius	1/2"
Q630-302	2 3/4" Backset with deadlatch, non-restoring	2 1/4" X 1 1/8"	Square	1/2"
Q630-274	2 3/4" Backset with deadlatch, non-restoring	2 1/4" X 1 1/8"	Radius	1/2"
Q630-301	2 3/8" Backset with deadlatch, non-restoring	2 1/4" X 1 1/8"	Square	1/2"
Q630-275	2 3/8" Backset with deadlatch, non-restoring	2 1/4" X 1 1/8"	Radius	1/2"

## Springlatches

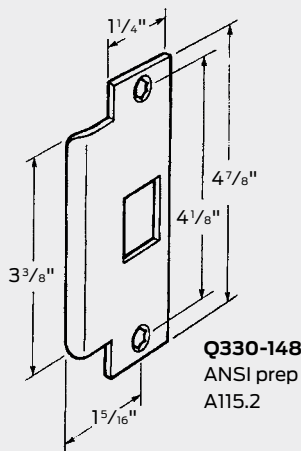


Springlatch

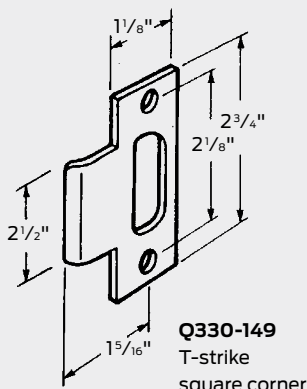
Catalog number	Description	Faceplate size	Corner	Projection
<b>Q630-270</b>	<b>2 3/4" Backset with springlatch</b>	<b>2 1/4" X 1 1/8"</b>	<b>Square</b>	<b>1/2"</b>
Q630-272	2 3/4" Backset with springlatch	2 1/4" X 1 1/8"	Radius	1/2"
Q630-271	2 3/8" Backset with springlatch	2 1/4" X 1 1/8"	Square	1/2"
Q630-273	2 3/8" Backset with springlatch	2 1/4" X 1 1/8"	Radius	1/2"
Q630-266	2 3/4" Backset with springlatch, non-restoring	2 1/4" X 1 1/8"	Square	1/2"
Q630-268	2 3/4" Backset with springlatch, non-restoring	2 1/4" X 1 1/8"	Radius	1/2"
Q630-267	2 3/8" Backset with springlatch, non-restoring	2 1/4" X 1 1/8"	Square	1/2"
Q630-269	2 3/8" Backset with springlatch, non-restoring	2 1/4" X 1 1/8"	Radius	1/2"

Note: All latches are UL listed and conform to both beveled and non-beveled doors. Bolded deadlatches come standard with all keyed functions and bolded springlatches comes standard with all non-keyed functions.

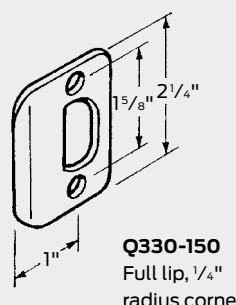
## Strikes



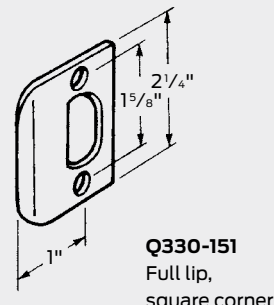
**Q330-148**  
ANSI prep  
A115.2



**Q330-149**  
T-strike  
square corner



**Q330-150**  
Full lip, 1/4"  
radius corner



**Q330-151**  
Full lip,  
square corner

## Other accessories

### Faceplates

Catalog number	Description
Q630-279	Faceplate, dead latch, round corner
Q630-278	Faceplate, dead latch, square corner
Q630-277	Faceplate, spring latch, round corner
Q630-276	Faceplate, spring latch, square corner

### Screw packs

Catalog number	Description
Q630-254	Screw pack, standard
Q330-399	Screw pack, dummy

# Function and trim style cross-reference

ANSI	Function	Falcon	Hager	Stanley Commercial	Yale	PDQ	Cal Royal	Arrow
		K Series	3400 Series	QCL 100 Series	4700LN Series	GT Series	Calypso Series	QL Series
F75	Passage lock	K101	3410	QCL130	4701LN	GT126	CAL30	QL01
F76	Privacy lock	K301	3440	QCL140	4702LN	GT176	CAL20	QL02/72
F82	Entry lock	K501	3450	-	4704LN	GT182	-	-
F109	Entry/office lock	K511	3453	QCL150	4707LN	GT116	CAL00	QL11/81
F84	Classroom lock	K561	3470	QCL160	4708LN	GT148	CAL03	QL17/87
F90	Corridor lock	K571	3473	QCL154	4722LN	GT165	CAL101	QL19/89
F86	Storeroom lock	K581	3480	QCL170	4705LN	GT115	CAL05	QL12/82
	Single dummy trim	K12	3417	QCL120	4755LN	GT211	CAL40	QL08

# How to order

Two simple ways to place your Falcon K Series order!

## ProExpress™

**E-Mail:** Order.Pro.Express@allegion.com

**Fax:** 1.800.924.3551

## Standard Falcon order

**E-Mail:** Order\_Entry\_Schlage\_Commercial@allegion.com

**Fax:** 1.800.452.0665

### Order example

Line item	Qty	Product	Design	Finish	Latch	Strike	Door thickness
1	10	K511PD	DAN	626			

Note: Only specify latch, strike and door thickness if item is not standard

## Warranty

The Falcon K Series lock has a limited 10 year warranty.

Please reference **www.us.allegion.com** for Falcon product warranty details.