



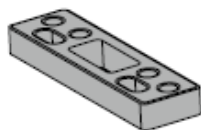
TRADEMARK HARDWARE

WORLD OF QUALITY HARDWARE

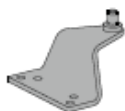
Installation accessories



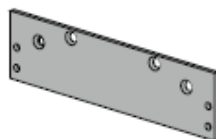
Soffit shoe support, SC60A-30
Provides anchorage for fifth screw used with soffit shoe, where reveal is less than $3 \frac{1}{16}$ " (78mm).



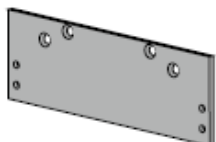
Blade stop spacer, SC60A-61
Required to lower parallel arm shoe to clear $\frac{1}{2}$ " (13mm) blade stop.



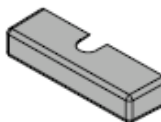
Auxiliary shoe, SC60A-62A
Requires a top rail of 7" (178mm).
Optional shoe replaces PA shoe for parallel arm mounting of regular arm with overhead holder/stop.



Plate, SC60A-18
Required for top jamb mounting where head frame is less than $1 \frac{3}{4}$ " (44mm).



Plate, SC60A-18PA
Required for parallel arm mounting where top rail is less than $4 \frac{3}{8}$ " (111mm) for PA, $4 \frac{1}{4}$ " (108mm) for HD and DS, measured from the stop. Plate requires $2 \frac{3}{8}$ " (60mm) minimum top rail measured from stop.



Cover, SC60A-72
Optional, non-handed, slim line plastic cover. Designed for SC60A series.

