



TRADEMARK HARDWARE

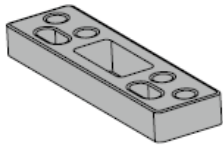
WORLD OF QUALITY HARDWARE

Installation accessories



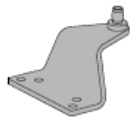
Soffit shoe support, SC70A-30

Provides anchorage for fifth screw used with soffit shoe, where reveal is less than $3\frac{1}{16}$ " (78mm).



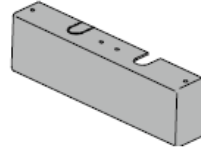
Blade stop spacer, SC70A-61

Required to lower parallel arm shoe to clear $\frac{1}{2}$ " (13mm) blade stop.



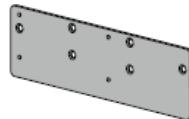
Auxiliary shoe, SC70A-62A

Requires a top rail of 7" (178mm). Optional shoe replaces PA shoe for parallel arm mounting of regular arm with overhead holder/stop.



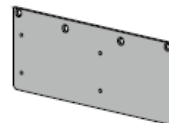
Cover, SC70A-72

Standard, non-handed, full plastic cover encloses the closer body.



Plate, SC70A-18

Required for hinge side mount where top rail is less than $3\frac{7}{8}$ " (98mm). Required for top jamb mounting where head frame is less than $3\frac{7}{8}$ " (98mm).



Plate, SC70A-18PA

Required for parallel arm mounting where top rail is less than 6" (152 mm), measured from the stop. Plate requires $1\frac{3}{4}$ " (44mm) minimum top rail measured from stop.

