



TRADEMARK HARDWARE

WORLD OF QUALITY HARDWARE

FALCON XX-M EXIT DEVICE

INSTALLATION

- 9) CHECK DOGGING OPERATION (PANIC APPLICATION ONLY)
- A) DEPRESS CROSSBAR, INSERT AND TURN DOGGING KEY IN BOTH THE ACTIVE AND INACTIVE HEADS.
 - B) REMOVE DOGGING KEY, CROSSBAR SHOULD REMAIN DEPRESSED.
 - C) REINSERT DOGGING KEY AND TURN IN OPPOSITE DIRECTION. CROSSBAR WILL "POP OUT".
 - D) FOR CYLINDER DOGGING, REFER TO D-4085.
- 10) CHECK FOR SMOOTH OPERATION AND SECURE LATCH BOLT ENGAGEMENT.

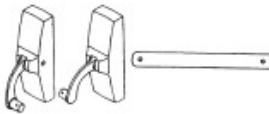







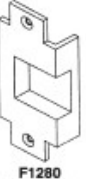
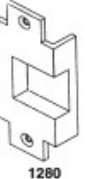
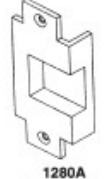
Exit Devices

Installation Instructions

1 PARTS CHECK

- 1) MAKE SURE THE CORRECT DEVICE, MORTISE LOCK, AND TRIM (IF APPLICABLE) ARE BEING USED, AND ARE THE CORRECT HAND.
- 2) EDGE OF DOOR SHOULD BE PREPARED FOR MORTISE LOCK (SEE PAGE #5)
- 3) FRAME SHOULD BE PREPARED FOR MORTISE STRIKE (SEE PAGE #5)
- 4) MAKE SURE ALL NEEDED PARTS ARE ON HAND.

NOTE: LIST DOES NOT REFLECT ALL POSSIBLE APPLICATIONS.

<p>1) (F)-18-M DEVICE AND CROSSBAR</p>  <p>NOTE: DEVICE IS FIELD REVERSIBLE</p>	<p>4) SCREW PACK FOR PANIC DEVICE DOGGING KEY (1 QTY)</p>  <p>#12-24x1/2" FPHMS (4 QTY)</p> 	<p>5) SCREW PACK FOR FIRE DEVICE</p> <p>#12-24x1/2" FPHMS (4 QTY)</p> 
<p>2) MORTISE LOCK</p>  <p>NOTE: MORTISE LOCK IS FIELD REVERSIBLE</p>	<p>#10x1-1/4" PPHMS (8 QTY)</p> 	<p>#10-24X3/4" PPHMS (8 QTY)</p> 
<p>3) STRIKES</p>  <p>1279 STANDARD PANIC AND FIRE</p>  <p>F1280 OPTIONAL FIRE</p>  <p>1280 OPTIONAL PANIC</p>  <p>1280A OPTIONAL PANIC</p>		

PAGE 1



www.tmhardware.com



845-388-1300



845-388-1388



sales@tmhardware.com



TRADEMARK HARDWARE

WORLD OF QUALITY HARDWARE

FALCON XX-M EXIT DEVICE INSTALLATION

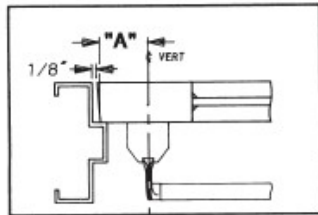
2 DOOR LAYOUT

(NOTE: FOR FACTORY PREPARED DOORS, VERIFY LAYOUT.)

(NOTE: FOR WOOD DOORS, CONSULT FACTORY.)

- 1) DOOR MUST BE FITTED AND HUNG PROPERLY BEFORE PROCEEDING.
- 2) MARK VERTICAL ϕ AND DEVICE REF. ϕ ON DOOR AND FRAME. (SEE FIGURES & CHART BELOW)

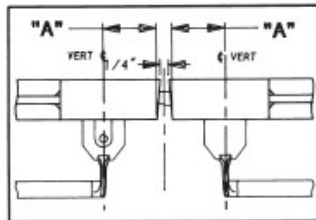
A) VERTICAL ϕ : SINGLE DOOR APPLICATION



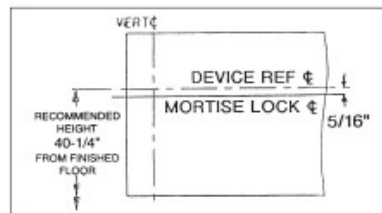
INSTALLATION	"A" BACKSET	MIN. STYLE
SINGLE DOOR MORTISE		
DOUBLE DOOR: MORTISE x VERTICAL DEVICES	2-3/4"	4-1/2"
DOUBLE DOOR: MORTISE x CONCEALED DEVICES		

NOTE: VERTICAL ϕ TAKEN FROM CENTER OF DOOR THICKNESS

B) VERTICAL ϕ : DOUBLE DOOR APPLICATION WITH MULLION



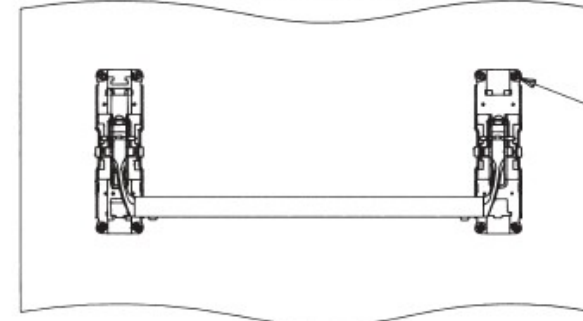
C) DEVICE REF. ϕ (HORIZONTAL)



FOR FACTORY PREPARED DOORS:
USE MORTISE LOCK ϕ TO FIND
DEVICE REF. ϕ

5) LOCATE, MARK, AND DRILL INACTIVE HEAD MOUNTING HOLES

- A) LEVEL CROSSBAR ON DOOR
- B) MARK CENTER OF FOUR MOUNTING HOLES
- C) DRILL 9/8\" DIA. HOLES IF USING SHEET METAL SCREWS OR DRILL AND TAP #10-24 IF USING MACHINE SCREWS OR DRILL 1/4\" DIA. HOLE INSIDE AND 3/8\" DIA. HOLE OUTSIDE FOR SEXBOLTS.



LHR SHOWN

#10x1-1/4\" PPHSMS OR
#10-24x3/4\" PPHMS (SURFACE
MOUNTED OR SEXBOLTS)
(4 QTY)

6) TIGHTEN ALL DEVICE AND MORTISE LOCK MOUNTING SCREWS.

7) INSTALL STRIKE.

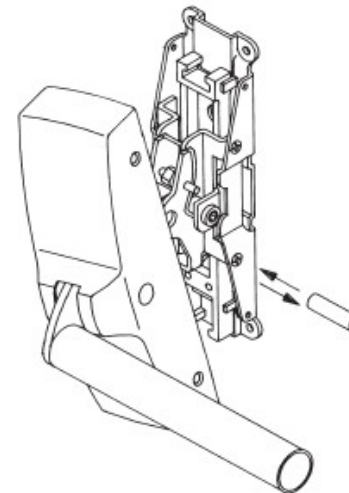
8) ATTACH CHASSIS COVER

- A) REMOVE AXLES FROM BOTH ACTIVE AND INACTIVE CHASSIS.
- B) REMOVE CROSSBAR AND CROSSBAR ARMS FROM BOTH CHASSIS.
- C) SLIDE CROSSBAR ARMS INTO RECTANGULAR CUT-OUT IN TOP OF CHASSIS COVER

NOTE: THE 1/2\" DIA. HOLE IN THE CHASSIS COVER ON BOTH COVERS SHOULD FACE EACH OTHER

D) INSERT CROSSBAR ARMS INTO CHASSIS AND INSERT AXLES.

E) SLIDE CHASSIS COVER OVER CHASSIS AND ATTACH WITH 4 (PER HEAD) #32x1/4\" UPPHMS.



LHR ACTIVE HEAD SHOWN

NOTE: 1/2\" DIA. HOLE IN EACH CHASSIS
COVER SHOULD FACE AWAY FROM
DOOR STOPS WHEN ASSEMBLED TO
CHASSIS (HOLES WILL FACE TOWARDS
EACH OTHER)



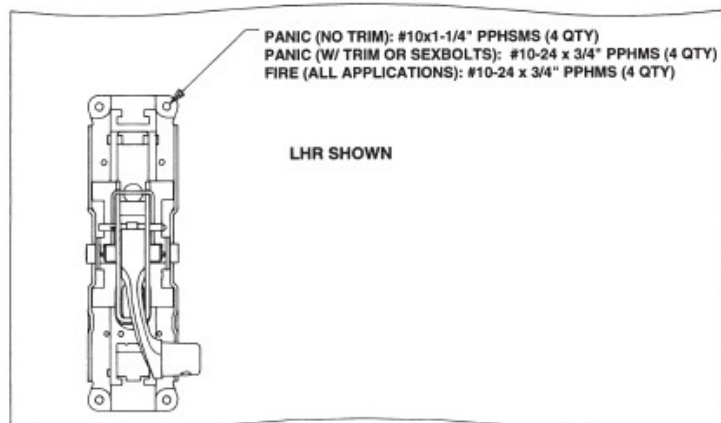
TRADEMARK HARDWARE

WORLD OF QUALITY HARDWARE

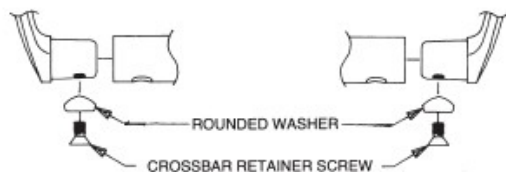
FALCON XX-M EXIT DEVICE INSTALLATION

4 HARDWARE INSTALLATION

- 1) INSTALL MORTISE LOCK WITH TWO #12-24x1/2" UPPHMS SCREWS.
(NOTE: LEAVE SCREWS LOOSE FOR EASIER DEVICE AND TRIM INSTALLATION)
- 2) IF USING OUTSIDE TRIM OR SEXBOLTS, MOUNT TRIM PER DIRECTIONS IN TRIM BOX, OR INSTALL OUTSIDE SEXBOLTS.
- 3) EITHER SURFACE MOUNT DEVICE, OR THROUGHBOLT DEVICE TO TRIM OR SEXBOLTS.

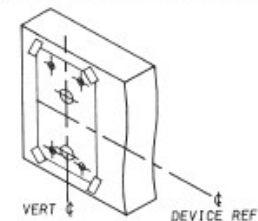


- 4) REMOVE CROSSBAR RETAINER SCREW AND ROUNDED WASHER FROM XX CROSSBAR ARMS. SLIDE CROSSBAR OVER BOTH ACTIVE AND INACTIVE CROSSBAR ARMS AND ATTACH WITH CROSSBAR RETAINER SCREW AND ROUNDED WASHER.

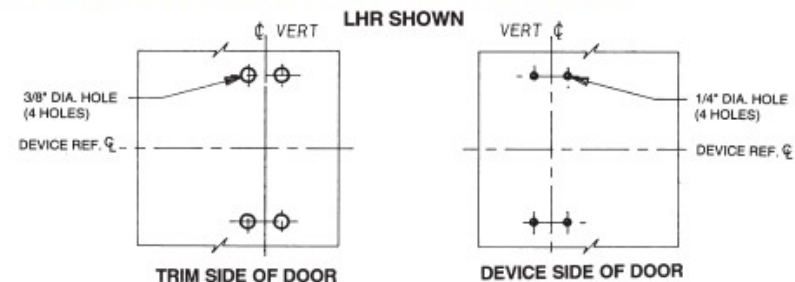


3 DOOR & HARDWARE PREPARATION

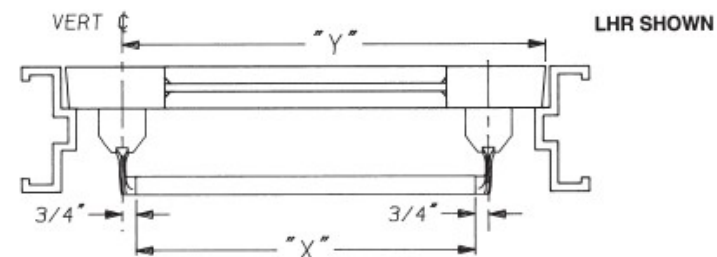
- 1) CHOOSE CORRECT DRILLING TEMPLATE FROM THE CENTER OF THIS BOOK.
- 2) TAPE DRILLING TEMPLATE ON DOOR USING VERTICAL ϕ AND DEVICE REF. ϕ (REFER TO 2), CENTERPUNCH AND DRILL HOLES, TAP IF REQUIRED, FOR DEVICE MOUNTING. AFTER DRILLING HOLES, REMOVE DRILLING TEMPLATE.



- 3) CHOOSE CORRECT DRILLING TEMPLATE FROM THE CENTER OF THIS BOOK. FOR SEXBOLT INSTALLATIONS, DRILL 3/8" DIAMETER HOLES ON TRIM SIDE OF DOOR ONLY. (SEE DIAGRAM BELOW)



- 4) DETERMINE CROSSBAR LENGTH:
 - A) MEASURE DISTANCE BETWEEN VERTICAL ϕ AND EDGE OF DOOR. (DIMENSION "Y" BELOW)
 - B) CALCULATE CROSSBAR LENGTH "X" USING FORMULA BELOW.



$$"X" = "Y" - 4-1/4"$$

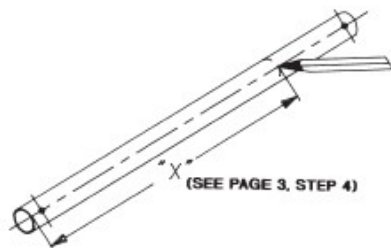


TRADEMARK HARDWARE

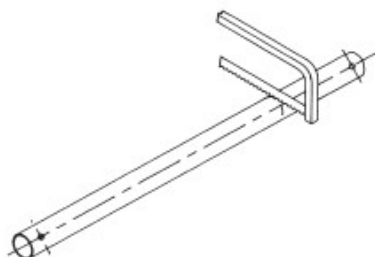
WORLD OF QUALITY HARDWARE

FALCON XX-M EXIT DEVICE INSTALLATION

- 5) IF CROSSBAR IS LONGER THAN "X", CUT THE CROSSBAR TO THE CORRECT LENGTH.
A) MARK CROSSBAR TO LENGTH "X".

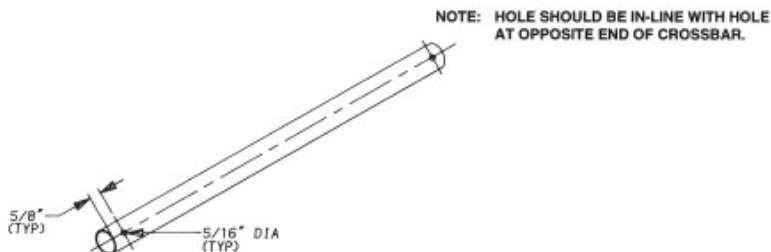


- B) CUT CROSSBAR TO MARKED DIMENSION AND REMOVE BURRS.

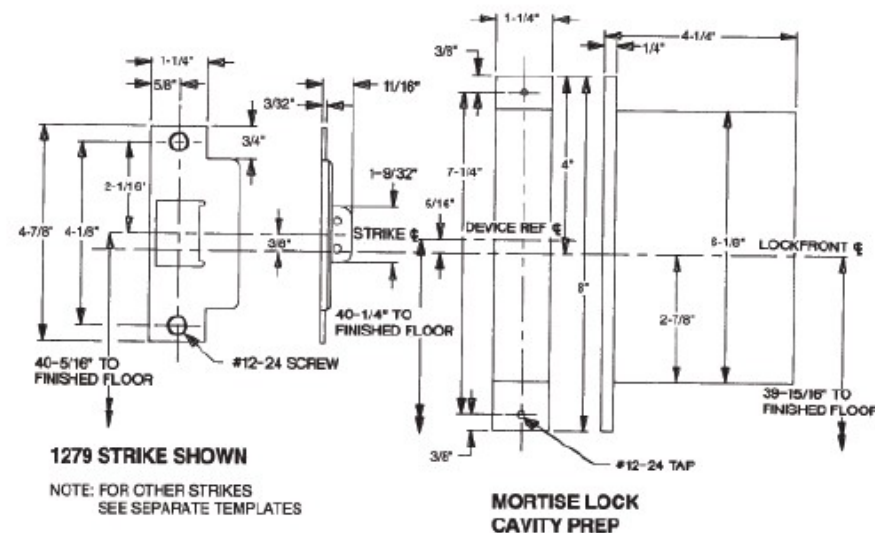


NOTE: FACTORY RECOMMENDS SAWING RATHER THAN GRIND CUT TO SIZE. GRINDING CAN DAMAGE THE FINISH OF THE DEVICE AND SAWING RESULTS IN LESS DAMAGE TO THE DEVICES'S FINISH.

- C) DRILL A 5/16" DIA. HOLE 5/8" FROM THE JUST CUT END OF THE CROSSBAR.



- 6) VERIFY MORTISING FOR MORTISE LOCK AND STRIKE



NOTE:
THIS PRODUCT IS FACTORY HANDED. IF YOU HAVE RECEIVED THE WRONG HANDING, A REPLACEMENT MUST BE ORDERED.

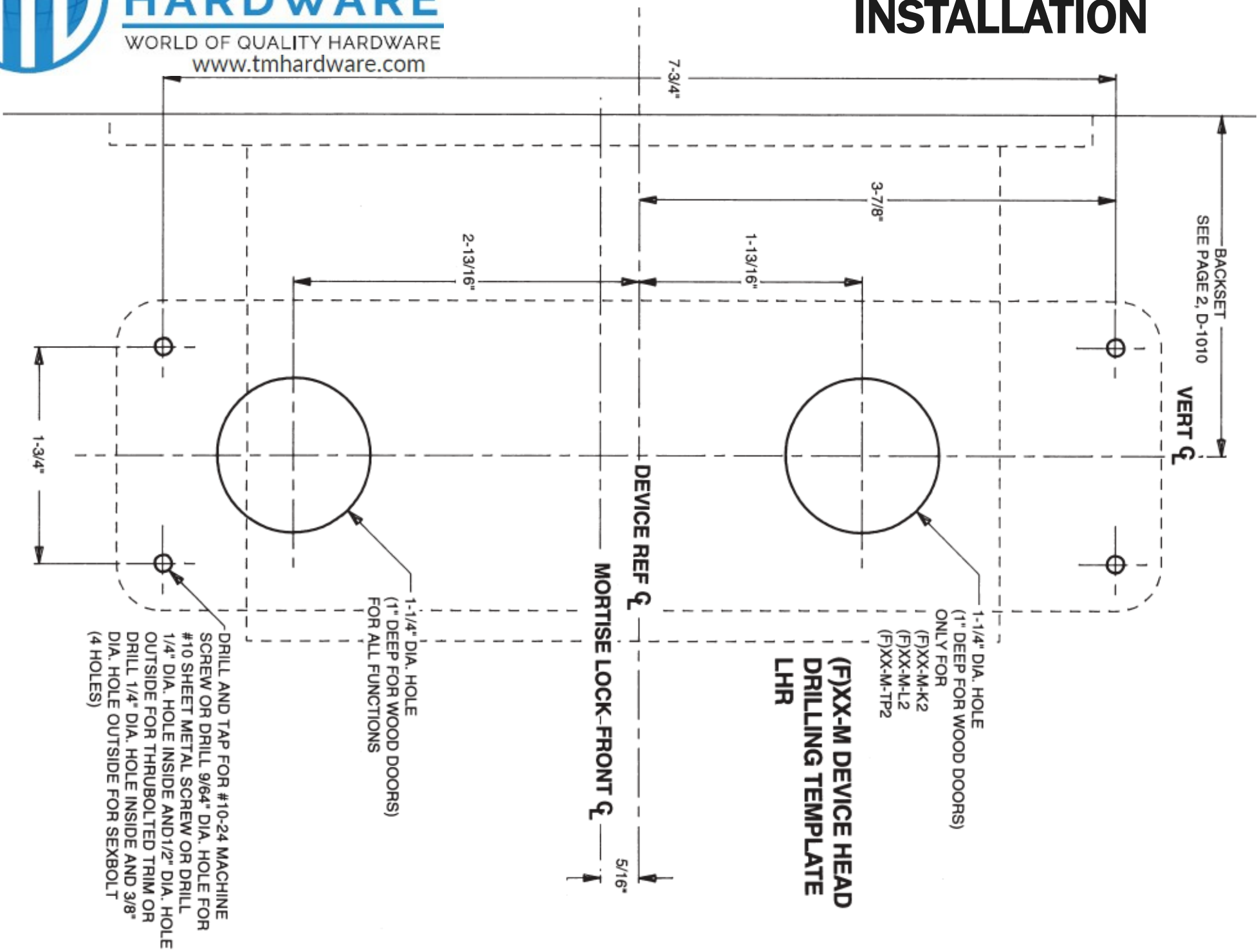


**TRADEMARK
HARDWARE**

WORLD OF QUALITY HARDWARE
www.tmhardware.com

FALCON XX-M EXIT DEVICE

INSTALLATION





(F)XX-M DEVICE HEAD DRILLING TEMPLATE RHR

